

Monatsstatistik Milchmarkt

Februar 2008

Bern, 15. April 2008

1 - Milchproduktion / Milchverwertung

- 01 Monatliche Milchproduktion
- 10 Milchverwertung nach Milchäquivalent
- 11 Milchverwertung nach Milchäquivalent / 2008 (Grafik)
- 14.1+14.2 Milchgehaltswerte nach Kanton
- 16 Verfütterte Magermilch und Verkäufe Milchersatzfuttermittel

2 - Hergestellte Milchprodukte

- 20 Käseproduktion, monatlich und kumuliert 2008
- 21 Käseproduktion, monatlich und kumuliert 2007
- 22 Käseproduktion im Vergleich zum Vorjahresmonat (Grafik)
- 23 Käseproduktion kumuliert im Vergleich zur Vorjahresperiode (Grafik)
- 24 Käseproduktionanteile je Sorte, kumuliert 2008 (Grafik)
- 25 Konsummilchproduktion
- 26 Butterproduktion und -verkäufe
- 27 Milchspezialitäten
- 28 Milchpulver und Milchkondensat

3 - Export Käse

- 30 Käseexport nach Produkten/Gruppen
- 31 Käseexport nach Ländern
- 31 Käseexport nach Ländern, Vorjahresmonat
- 32 Käseexport nach Ländern, kumuliert
- 32 Käseexport nach Ländern, kumuliert, Vorjahr
- 33-1 bis 33-10 Käseexport total / ausgewählte Sorten, ab 2005
- 34 Anteil Käseexport je Sorte (Grafik)

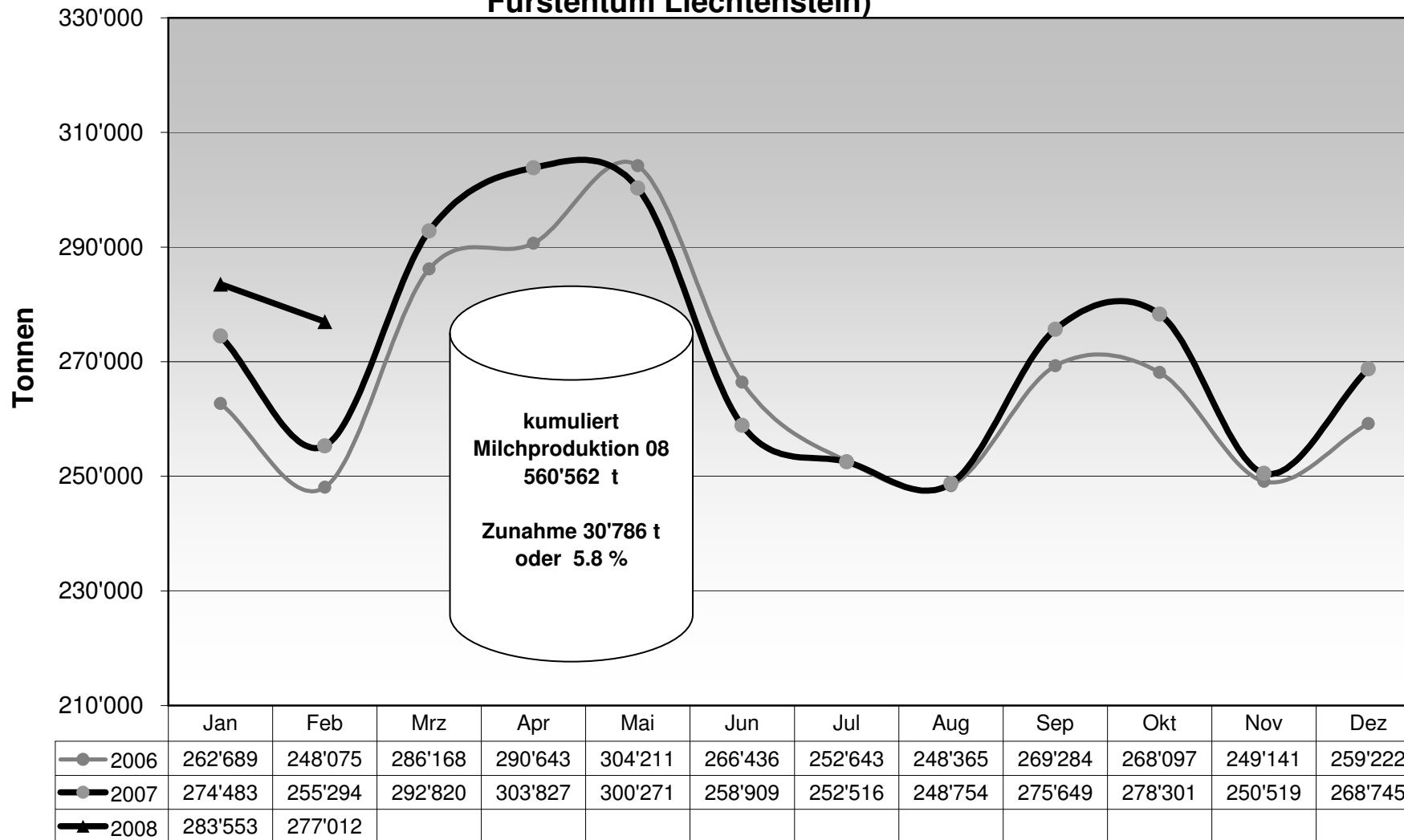
4 - Import Käse

- 40 Käseimport nach Produkten/Gruppen
- 41 Käseimport nach Ländern
- 41 Käseimport nach Ländern, Vorjahresmonat
- 42 Käseimport nach Ländern, kumuliert
- 42 Käseimport nach Ländern, kumuliert, Vorjahr
- 43.1 bis 43.7 Käseimport total / nach Kategorien, ab 2005
- 44 Anteil Käseimport nach Ländern (Grafik)

Hinweis:

Infolge des diesjährigen Schaltjahres hat der Februar 29 Tage, was einer positiven Abweichung von rund 3.5 Prozent entspricht.

Monatliche Milchproduktion 2008 (inkl. Zonenmilch Genf sowie Milch aus dem Fürstentum Liechtenstein)



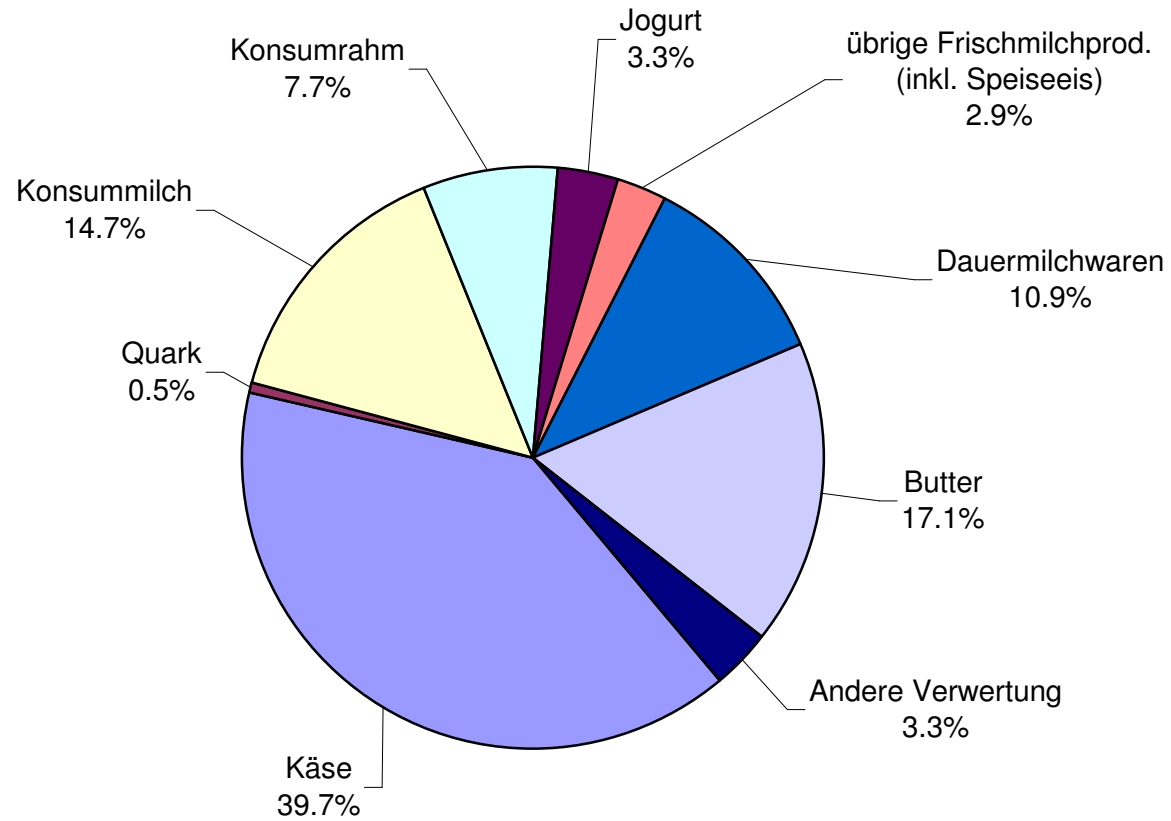
Milchverwertung nach Milchäquivalent

| Milchverwertung zu: | Monatliche Verwertung | | Differenz zum Vorjahres-Monat | | Kumulierte Verwertung | | Differenz zur Vorjahresperiode | |
|---|-----------------------|----------------|-------------------------------|------------|-----------------------|-------------------|--------------------------------|------------|
| | Februar 2007 | Februar 2008 | | | Jan. - Febr. 2007 | Jan. - Febr. 2008 | | |
| | Tonnen | Tonnen | Tonnen | (%) | Tonnen | Tonnen | Tonnen | (%) |
| Käse | 103'494 | 109'961 | 6'467 | 6.2 | 216'168 | 222'894 | 6'726 | 3.1 |
| Quark | 1'495 | 1'330 | -165 | -11.0 | 3'114 | 2'697 | -417 | -13.4 |
| Konsummilch | 35'842 | 40'692 | 4'850 | 13.5 | 74'857 | 77'393 | 2'536 | 3.4 |
| Konsumrahm | 20'342 | 21'352 | 1'010 | 5.0 | 39'308 | 40'417 | 1'109 | 2.8 |
| Jogurt | 8'920 | 9'041 | 121 | 1.4 | 18'698 | 18'887 | 189 | 1.0 |
| übrige Frischmilchprod. (inkl. Speiseeis) | 7'576 | 7'990 | 414 | 5.5 | 15'176 | 16'594 | 1'418 | 9.3 |
| Dauermilchwaren | 26'333 | 30'131 | 3'798 | 14.4 | 53'389 | 62'566 | 9'177 | 17.2 |
| Butter | 39'967 | 47'351 | 7'384 | 18.5 | 83'668 | 98'986 | 15'318 | 18.3 |
| Andere Verwertung | 11'325 | 9'164 | -2'161 | -19.1 | 25'398 | 20'128 | -5'270 | -20.7 |
| Total Milchverwertung | 255'294 | 277'012 | 21'718 | 8.5 | 529'776 | 560'562 | 30'786 | 5.8 |

Ein Milchäquivalent entspricht den Inhaltsstoffen von Eiweiss und Fett eines Kilogramms Milch (Anteil Eiweiss = 0.45 Äquivalent und Anteil Fett = 0.55 Äquivalent)

- Beispiele: 1 kg Vollmilch Past/UHT = 0.45 Eiweiss + 0.55 Fett = 1.00 Milchäquivalent
 1 kg Magermilch Past/UHT = 0.45 Eiweiss + 0.05 Fett = 0.50 Milchäquivalent
 1 kg Vollrahm Past/UHT = 0.30 Eiweiss + 4.80 Fett = 5.10 Milchäquivalent

Milchverwertung nach Milchäquivalent Februar 2008 Total 277'012 Tonnen Milch



Milchgehaltswerte nach Kanton 2008 (Seite 1 / Aargau bis Nidwalden)

| Kanton | Inhaltsstoffe | Jan. g/kg | Feb. g/kg | März g/kg | April g/kg | Mai g/kg | Juni g/kg | Juli g/kg | Aug. g/kg | Sept. g/kg | Okt. g/kg | Nov. g/kg | Dez. g/kg | Durchschnitt 2008 g/kg |
|------------------------|---------------|--------------|--------------|--------------|---------------|-------------|--------------|--------------|--------------|---------------|--------------|--------------|--------------|---------------------------|
| Aargau | Fett | 42.6 | 43.0 | | | | | | | | | | | 42.8 |
| | Eiweiss | 33.2 | 33.2 | | | | | | | | | | | 33.2 |
| | Total | 75.8 | 76.2 | | | | | | | | | | | 76.0 |
| Appenzell Innerrhoden | Fett | 42.2 | 41.9 | | | | | | | | | | | 42.1 |
| | Eiweiss | 33.2 | 33.1 | | | | | | | | | | | 33.2 |
| | Total | 75.4 | 75.0 | | | | | | | | | | | 75.2 |
| Appenzell Ausserrhoden | Fett | 41.0 | 41.1 | | | | | | | | | | | 41.1 |
| | Eiweiss | 33.2 | 33.1 | | | | | | | | | | | 33.2 |
| | Total | 74.2 | 74.2 | | | | | | | | | | | 74.2 |
| Baselland | Fett | 42.2 | 42.1 | | | | | | | | | | | 42.2 |
| | Eiweiss | 32.6 | 32.4 | | | | | | | | | | | 32.5 |
| | Total | 74.8 | 74.5 | | | | | | | | | | | 74.7 |
| Baselstadt | Fett | 44.4 | 43.3 | | | | | | | | | | | 43.9 |
| | Eiweiss | 34.1 | 33.7 | | | | | | | | | | | 33.9 |
| | Total | 78.5 | 77.0 | | | | | | | | | | | 77.8 |
| Bern | Fett | 41.8 | 41.7 | | | | | | | | | | | 41.8 |
| | Eiweiss | 32.8 | 32.5 | | | | | | | | | | | 32.7 |
| | Total | 74.6 | 74.2 | | | | | | | | | | | 74.4 |
| Freiburg | Fett | 40.4 | 40.3 | | | | | | | | | | | 40.4 |
| | Eiweiss | 32.1 | 32.0 | | | | | | | | | | | 32.1 |
| | Total | 72.5 | 72.3 | | | | | | | | | | | 72.4 |
| Genf | Fett | 42.8 | 41.8 | | | | | | | | | | | 42.3 |
| | Eiweiss | 33.5 | 33.6 | | | | | | | | | | | 33.6 |
| | Total | 76.3 | 75.4 | | | | | | | | | | | 75.9 |
| Glarus | Fett | 39.4 | 39.9 | | | | | | | | | | | 39.7 |
| | Eiweiss | 31.4 | 31.6 | | | | | | | | | | | 31.5 |
| | Total | 70.8 | 71.5 | | | | | | | | | | | 71.2 |
| Graubünden | Fett | 38.9 | 39.2 | | | | | | | | | | | 39.1 |
| | Eiweiss | 31.3 | 31.5 | | | | | | | | | | | 31.4 |
| | Total | 70.2 | 70.7 | | | | | | | | | | | 70.5 |
| Jura | Fett | 40.7 | 40.7 | | | | | | | | | | | 40.7 |
| | Eiweiss | 32.1 | 31.7 | | | | | | | | | | | 31.9 |
| | Total | 72.8 | 72.4 | | | | | | | | | | | 72.6 |
| Luzern | Fett | 41.7 | 41.8 | | | | | | | | | | | 41.8 |
| | Eiweiss | 33.5 | 33.2 | | | | | | | | | | | 33.4 |
| | Total | 75.2 | 75.0 | | | | | | | | | | | 75.1 |
| Neuenburg | Fett | 40.0 | 39.6 | | | | | | | | | | | 39.8 |
| | Eiweiss | 32.1 | 31.8 | | | | | | | | | | | 32.0 |
| | Total | 72.1 | 71.4 | | | | | | | | | | | 71.8 |
| Nidwalden | Fett | 40.7 | 40.9 | | | | | | | | | | | 40.8 |
| | Eiweiss | 32.8 | 32.7 | | | | | | | | | | | 32.8 |
| | Total | 73.5 | 73.6 | | | | | | | | | | | 73.6 |

Quelle: Suissselab AG Zollikofen / Qualitas AG Zug

Die Angaben werden aus allen Proben (automatisch und handgefasste Proben) welche im Rahmen der Qualitätskontrolle der Milch untersucht werden, ermittelt (Medianwert).

Milchgehaltswerte nach Kanton 2008 (Seite 2 / Obwalden bis Zürich)

| Kanton | Inhaltsstoffe | Jan. g/kg | Feb. g/kg | März g/kg | April g/kg | Mai g/kg | Juni g/kg | Juli g/kg | Aug. g/kg | Sept. g/kg | Okt. g/kg | Nov. g/kg | Dez. g/kg | Durchschnitt 2008 g/kg |
|-------------------------------|----------------|--------------|--------------|--------------|---------------|-------------|--------------|--------------|--------------|---------------|--------------|--------------|--------------|---------------------------|
| Obwalden | Fett | 41.1 | 41.4 | | | | | | | | | | | 41.3 |
| | Eiweiss | 32.7 | 32.9 | | | | | | | | | | | 32.8 |
| | Total | 73.8 | 74.3 | | | | | | | | | | | 74.1 |
| Schaffhausen | Fett | 42.2 | 42.5 | | | | | | | | | | | 42.4 |
| | Eiweiss | 33.0 | 33.0 | | | | | | | | | | | 33.0 |
| | Total | 75.2 | 75.5 | | | | | | | | | | | 75.4 |
| Schwyz | Fett | 40.4 | 40.8 | | | | | | | | | | | 40.6 |
| | Eiweiss | 32.8 | 32.9 | | | | | | | | | | | 32.9 |
| | Total | 73.2 | 73.7 | | | | | | | | | | | 73.5 |
| St. Gallen | Fett | 41.4 | 41.5 | | | | | | | | | | | 41.5 |
| | Eiweiss | 33.5 | 33.4 | | | | | | | | | | | 33.5 |
| | Total | 74.9 | 74.9 | | | | | | | | | | | 74.9 |
| Solothurn | Fett | 42.9 | 42.8 | | | | | | | | | | | 42.9 |
| | Eiweiss | 32.9 | 32.8 | | | | | | | | | | | 32.9 |
| | Total | 75.8 | 75.6 | | | | | | | | | | | 75.7 |
| Tessin | Fett | 38.6 | 38.7 | | | | | | | | | | | 38.7 |
| | Eiweiss | 31.7 | 31.7 | | | | | | | | | | | 31.7 |
| | Total | 70.3 | 70.4 | | | | | | | | | | | 70.4 |
| Thurgau | Fett | 42.2 | 42.2 | | | | | | | | | | | 42.2 |
| | Eiweiss | 34.1 | 34.0 | | | | | | | | | | | 34.1 |
| | Total | 76.3 | 76.2 | | | | | | | | | | | 76.3 |
| Uri | Fett | 40.7 | 41.2 | | | | | | | | | | | 41.0 |
| | Eiweiss | 32.4 | 32.7 | | | | | | | | | | | 32.6 |
| | Total | 73.1 | 73.9 | | | | | | | | | | | 73.5 |
| Waadt | Fett | 39.9 | 39.8 | | | | | | | | | | | 39.9 |
| | Eiweiss | 32.5 | 32.1 | | | | | | | | | | | 32.3 |
| | Total | 72.4 | 71.9 | | | | | | | | | | | 72.2 |
| Wallis | Fett | 37.7 | 37.7 | | | | | | | | | | | 37.7 |
| | Eiweiss | 31.7 | 31.9 | | | | | | | | | | | 31.8 |
| | Total | 69.4 | 69.6 | | | | | | | | | | | 69.5 |
| Zug | Fett | 42.0 | 42.1 | | | | | | | | | | | 42.1 |
| | Eiweiss | 33.4 | 33.5 | | | | | | | | | | | 33.5 |
| | Total | 75.4 | 75.6 | | | | | | | | | | | 75.5 |
| Zürich | Fett | 42.4 | 42.7 | | | | | | | | | | | 42.6 |
| | Eiweiss | 33.5 | 33.4 | | | | | | | | | | | 33.5 |
| | Total | 75.9 | 76.1 | | | | | | | | | | | 76.0 |
| Durchschnittsgehalt CH | Fett | 41.7 | 41.4 | | | | | | | | | | | 41.6 |
| | Eiweiss | 32.9 | 32.8 | | | | | | | | | | | 32.9 |
| | Total | 74.6 | 74.2 | | | | | | | | | | | 74.4 |

Quelle: Suissselab AG Zollikofen / Qualitas AG Zug

Die Angaben werden aus allen Proben (automatisch und handgefasste Proben) welche im Rahmen der Qualitätskontrolle der Milch untersucht werden, ermittelt (Medianwert).

Verfütterte Magermilch

| | Monatliche Verwertung | | Differenz zum Vorjahres-Monat | | Kumulierte Verwertung | | Differenz zur Vorjahresperiode | |
|-------------------------------------|-----------------------|---------------------|-------------------------------|------|--------------------------|--------------------------|--------------------------------|------|
| | <i>Februar 2007</i> | <i>Februar 2008</i> | | | <i>Jan. - Febr. 2007</i> | <i>Jan. - Febr. 2008</i> | | |
| | Tonnen | Tonnen | Tonnen | (%) | Tonnen | Tonnen | Tonnen | (%) |
| Total verfütterte Magermilch | 442 | 628 | 186 | 42.1 | 926 | 1'244 | 318 | 34.3 |

Verkäufe Milchersatzfuttermittel

| | Monatliche Verkäufe | | Differenz zum Vorjahres-Monat | | Kumulierte Verkäufe | | Differenz zur Vorjahresperiode | |
|--------------------------------------|---------------------|---------------------|-------------------------------|-------|--------------------------|--------------------------|--------------------------------|-------|
| | <i>Februar 2007</i> | <i>Februar 2008</i> | | | <i>Jan. - Febr. 2007</i> | <i>Jan. - Febr. 2008</i> | | |
| | Tonnen | Tonnen | Tonnen | (%) | Tonnen | Tonnen | Tonnen | (%) |
| MEF Kälbermast > 30% | 1'344 | 2'016 | 672 | 50.0 | 2'832 | 3'640 | 808 | 28.5 |
| MEF Kälberaufzucht > 30% | 249 | 359 | 110 | 44.2 | 492 | 615 | 123 | 25.0 |
| MEF Andere > 30% | 36 | 25 | -11 | -30.6 | 61 | 47 | -14 | -23.0 |
| MEF Kälbermast < 30% | 21 | 28 | 7 | 33.3 | 47 | 55 | 8 | 17.0 |
| MEF Kälberaufzucht < 30% | 2 | 8 | 6 | 300.0 | 7 | 12 | 5 | 71.4 |
| MEF Andere < 30% | 12 | 7 | -5 | -41.7 | 20 | 20 | 0 | 0.0 |
| Total Milchersatzfuttermittel | 1'664 | 2'443 | 779 | 46.8 | 3'459 | 4'389 | 930 | 26.9 |

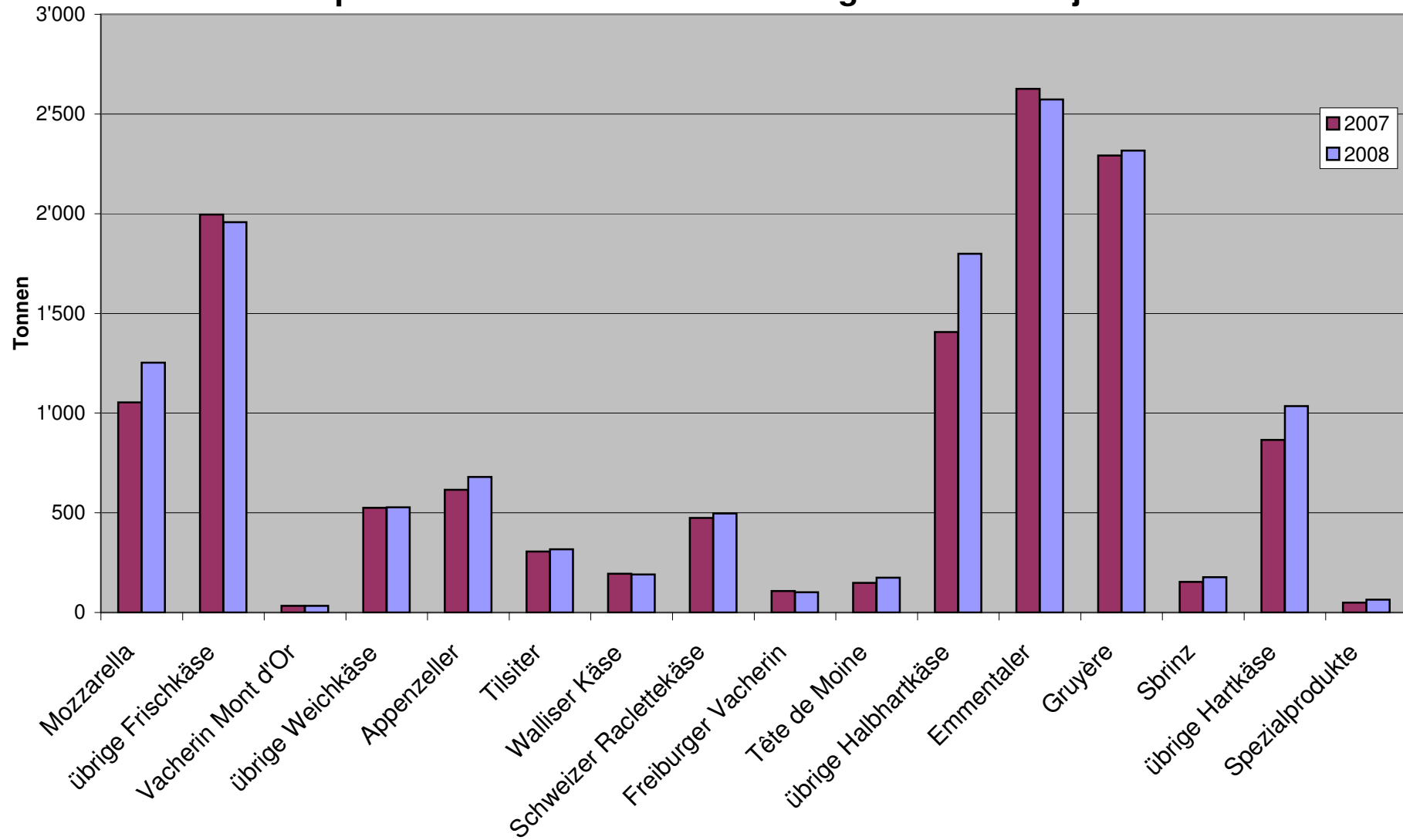
Käseproduktion 2008 kumuliert mit Vorjahresvergleich

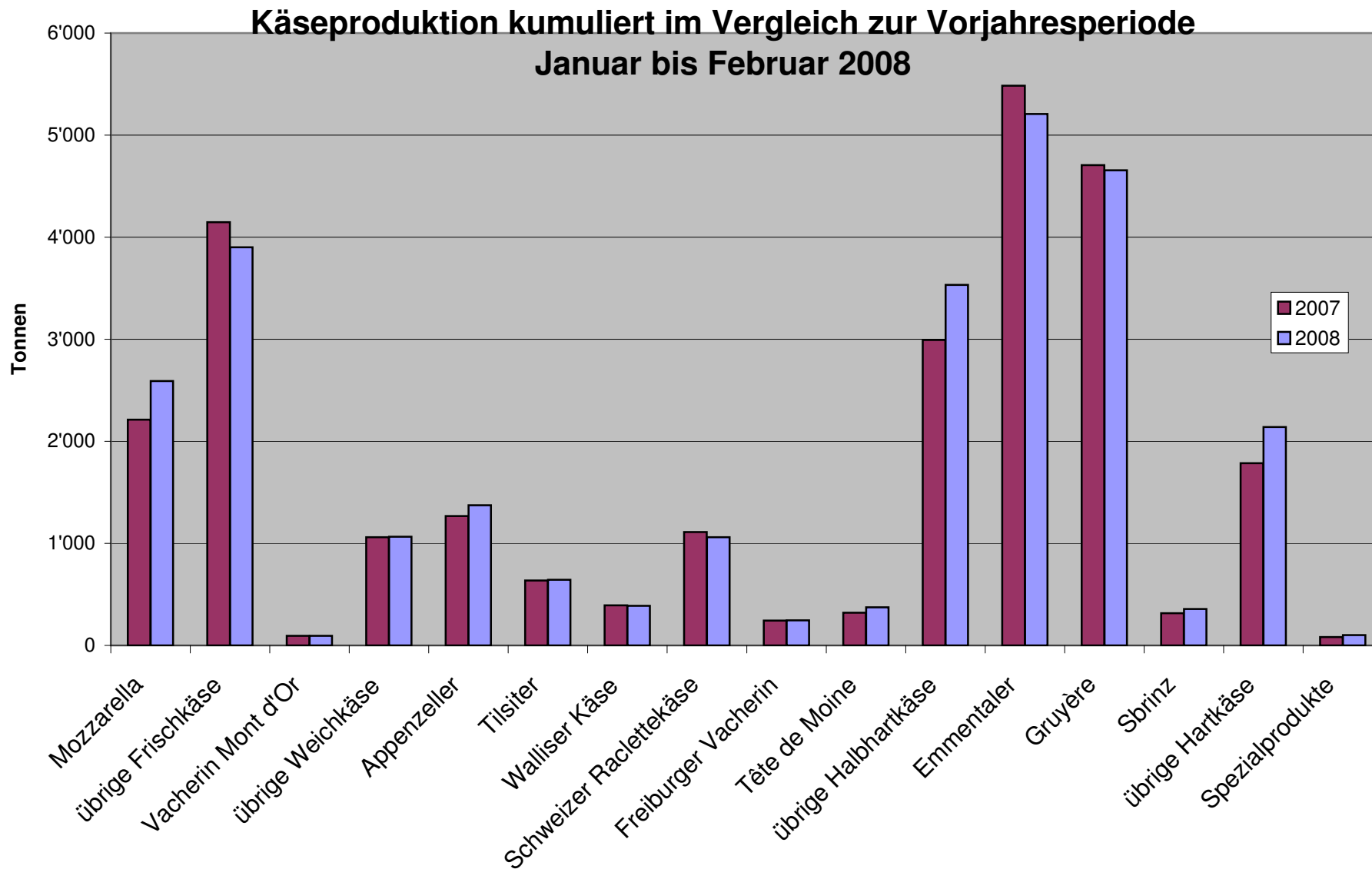
| | Jan. | Feb. | März | April | Mai | Juni | Juli | Aug. | Sept. | Okt. | Nov. | Dez. | Kumuliert 2007 | Kumuliert 2008 | Differenz zur Vorjahresperiode | |
|---|---------------|---------------|--------|--------|--------|--------|--------|--------|--------|--------|--------|--------|-------------------|-------------------|-----------------------------------|-------------|
| | Tonnen | Tonnen | Tonnen | Tonnen | Tonnen | Tonnen | Tonnen | Tonnen | Tonnen | Tonnen | Tonnen | Tonnen | Tonnen | Tonnen | Tonnen | Prozent |
| Quark | 746 | 758 | | | | | | | | | | | 1'703 | 1'504 | -199 | -11.7 |
| Mozzarella | 1'337 | 1'253 | | | | | | | | | | | 2'211 | 2'590 | 379 | 17.1 |
| Mascarpone | 43 | 48 | | | | | | | | | | | 107 | 91 | -16 | -15.0 |
| Übrige Frischkäse | 1'154 | 1'152 | | | | | | | | | | | 2'335 | 2'306 | -29 | -1.2 |
| Frischkäse total | 3'280 | 3'211 | | | | | | | | | | | 6'358 | 6'491 | 133 | 2.1 |
| Weisschimmelkäse, mager bis viertelfett | | | | | | | | | | | | | | | | |
| Weisschimmelkäse, halb- bis vollfett | 113 | 123 | | | | | | | | | | | 252 | 236 | -16 | -6.3 |
| Weisschimmelkäse, überfett | 120 | 124 | | | | | | | | | | | 240 | 244 | 4 | 1.7 |
| Blau-, Grünschimmelkäse | | | | | | | | | | | | | | | | |
| Tomme | 203 | 172 | | | | | | | | | | | 322 | 375 | 53 | 16.5 |
| Vacherin Mont d'Or | 60 | 34 | | | | | | | | | | | 95 | 94 | -1 | -1.1 |
| Anderer Weichkäse mager, viertelfett | 4 | 3 | | | | | | | | | | | 23 | 7 | -16 | -69.6 |
| Anderer Weichkäse, halb- bis vollfett | 65 | 66 | | | | | | | | | | | 128 | 131 | 3 | 2.3 |
| Anderer Weichkäse, überfett | 33 | 38 | | | | | | | | | | | 94 | 71 | -23 | -24.5 |
| Weichkäse total | 598 | 561 | | | | | | | | | | | 1'155 | 1'159 | 4 | 0.3 |
| Appenzeller Käse | 693 | 680 | | | | | | | | | | | 1'267 | 1'373 | 106 | 8.4 |
| Tilsiter | 326 | 317 | | | | | | | | | | | 637 | 643 | 6 | 0.9 |
| Walliser Käse (Walliser Raclettekäse) | 198 | 191 | | | | | | | | | | | 393 | 389 | -4 | -1.0 |
| Schweizer Raclettekäse | 263 | 497 | | | | | | | | | | | 1'112 | 1'060 | -52 | -4.7 |
| Vacherin Fribourgeois | 144 | 101 | | | | | | | | | | | 243 | 245 | 2 | 0.8 |
| Tête de Moine | 200 | 174 | | | | | | | | | | | 321 | 374 | 53 | 16.5 |
| Jurakäse | 17 | 20 | | | | | | | | | | | 35 | 37 | 2 | 5.7 |
| Winzerkäse | 32 | 32 | | | | | | | | | | | 67 | 64 | -3 | -4.5 |
| Mutschli | 41 | 53 | | | | | | | | | | | 69 | 94 | 25 | 36.2 |
| Alpkäse halbhart | -3 | 1 | | | | | | | | | | | | -2 | | #DIV/0! |
| Bündner Bergkäse | 91 | 87 | | | | | | | | | | | 162 | 178 | 16 | 9.9 |
| Berg- und Schnittkäse halbhart | 192 | 151 | | | | | | | | | | | 247 | 343 | 96 | 38.9 |
| St. Paulin Suisse | 50 | 51 | | | | | | | | | | | 127 | 101 | -26 | -20.5 |
| Schweizer Edamer | 33 | 36 | | | | | | | | | | | 61 | 69 | 8 | 13.1 |
| Kaltgeriebte Käse | 3 | 1 | | | | | | | | | | | 3 | 4 | 1 | 33.3 |
| Halbhartkäse mit Schimmelbildung | 12 | 15 | | | | | | | | | | | 23 | 27 | 4 | 17.4 |
| Conveniencekäse | 107 | 130 | | | | | | | | | | | 193 | 237 | 44 | 22.8 |
| Schmelzrohware, vollfett | 200 | 215 | | | | | | | | | | | 250 | 415 | 165 | 66.0 |
| Anderer Halbhartkäse, mager bis viertelfett | 51 | 58 | | | | | | | | | | | 114 | 109 | -5 | -4.4 |
| Anderer Halbhartkäse, halb- bis vollfett | 717 | 732 | | | | | | | | | | | 1'348 | 1'449 | 101 | 7.5 |
| Anderer Halbhartkäse, überfett | 192 | 216 | | | | | | | | | | | 293 | 408 | 115 | 39.2 |
| Halbhartkäse total | 3'858 | 3'759 | | | | | | | | | | | 6'966 | 7'617 | 651 | 9.3 |
| Emmentaler | 2'635 | 2'573 | | | | | | | | | | | 5'485 | 5'208 | -277 | -5.1 |
| Switzerland Swiss | 282 | 249 | | | | | | | | | | | 312 | 541 | 228 | 73.4 |
| Gruyère | 2'339 | 2'317 | | | | | | | | | | | 4'706 | 4'656 | -50 | -1.1 |
| Alpkäse hart | | | | | | | | | | | | | | | | |
| Anderer Hartkäse, mager bis viertelfett | 9 | 2 | | | | | | | | | | | 3 | 11 | 8 | 266.7 |
| Anderer Hartkäse, halb- bis vollfett | 802 | 781 | | | | | | | | | | | 1'462 | 1'583 | 121 | 8.3 |
| Anderer Hartkäse, überfett | 2 | 1 | | | | | | | | | | | 8 | 3 | -5 | -62.5 |
| Hartkäse total | 6'079 | 5'923 | | | | | | | | | | | 11'977 | 12'002 | 25 | 0.2 |
| Sbrinz | 179 | 177 | | | | | | | | | | | 315 | 356 | 41 | 13.0 |
| Extra Hartkäse total | 179 | 177 | | | | | | | | | | | 315 | 356 | 41 | 13.0 |
| Reiner Ziegenkäse | 23 | 48 | | | | | | | | | | | 59 | 71 | 12 | 20.3 |
| Reiner Schafkäse | 14 | 16 | | | | | | | | | | | 26 | 30 | 4 | 15.4 |
| Spezialprodukte total | 37 | 64 | | | | | | | | | | | 83 | 101 | 18 | 21.7 |
| Total alle Käsesorten | 14'031 | 13'697 | | | | | | | | | | | 26'852 | 27'728 | 876 | 3.3 |

Käseproduktion 2007

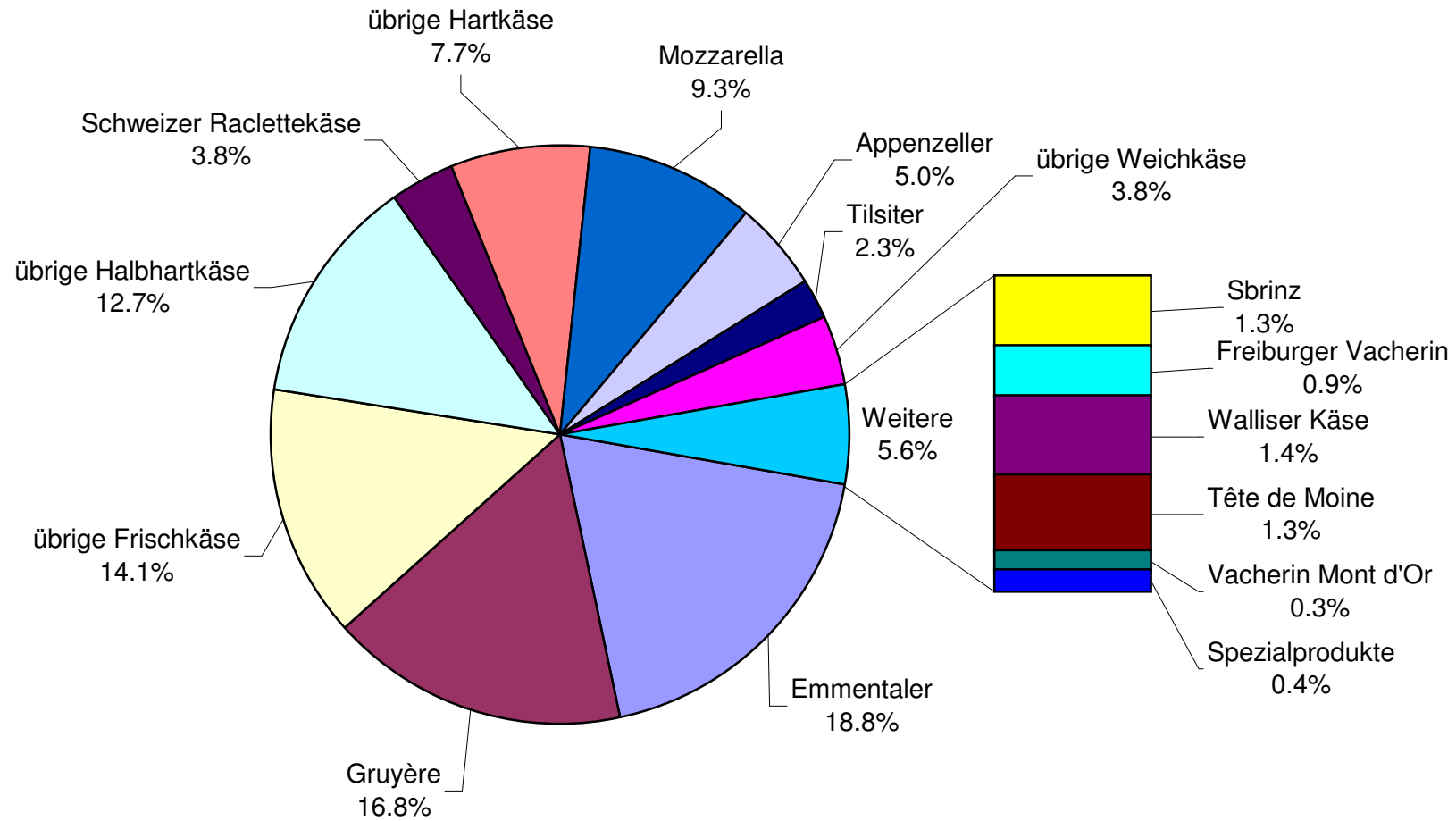
| | Jan. | Feb. | März | April | Mai | Juni | Juli | Aug. | Sept. | Okt. | Nov. | Dez. | Kumuliert 2007 |
|---|---------------|---------------|---------------|---------------|---------------|---------------|---------------|---------------|---------------|---------------|---------------|---------------|----------------|
| | Tonnen | Tonnen | Tonnen | Tonnen | Tonnen | Tonnen | Tonnen | Tonnen | Tonnen | Tonnen | Tonnen | Tonnen | Tonnen |
| Quark | 869 | 834 | 999 | 873 | 1'006 | 882 | 899 | 915 | 835 | 768 | 742 | 841 | 10'463 |
| Mozzarella | 1'157 | 1'054 | 1'331 | 1'400 | 1'583 | 1'514 | 1'523 | 1'521 | 1'277 | 1'446 | 1'230 | 1'155 | 16'191 |
| Mascarpone | 49 | 58 | 59 | 54 | 54 | 53 | 53 | 50 | 40 | 45 | 49 | 96 | 660 |
| Übrige Frischkäse | 1'232 | 1'103 | 1'328 | 1'178 | 1'427 | 1'268 | 1'114 | 1'196 | 999 | 1'102 | 1'115 | 1'004 | 14'066 |
| Frischkäse total | 3'308 | 3'050 | 3'717 | 3'505 | 4'070 | 3'717 | 3'590 | 3'681 | 3'151 | 3'362 | 3'136 | 3'095 | 41'382 |
| Weisschimmelkäse, mager bis viertelfett | 0 | 0 | 0 | 0 | 0 | 0 | 0 | 0 | 0 | 0 | 0 | 0 | 0 |
| Weisschimmelkäse, halb- bis vollfett | 114 | 138 | 100 | 123 | 117 | 112 | 106 | 120 | 110 | 120 | 130 | 127 | 1'417 |
| Weisschimmelkäse, überfett | 117 | 123 | 119 | 109 | 132 | 124 | 112 | 120 | 108 | 152 | 136 | 109 | 1'461 |
| Blau-, Grünschimmelkäse | 0 | 0 | 0 | 0 | 0 | 0 | 0 | 0 | 1 | 0 | 1 | 1 | 3 |
| Tomme | 176 | 146 | 143 | 164 | 189 | 157 | 179 | 208 | 175 | 183 | 198 | 145 | 2'062 |
| Vacherin Mont d'Or | 61 | 34 | 8 | 0 | 0 | 0 | 0 | 43 | 98 | 95 | 116 | 65 | 520 |
| Anderer Weichkäse mager, viertelfett | 13 | 10 | 12 | 11 | 14 | 21 | 3 | 9 | 4 | 4 | 3 | 14 | 118 |
| Anderer Weichkäse, halb- bis vollfett | 60 | 68 | 65 | 67 | 77 | 63 | 64 | 65 | 70 | 80 | 78 | 59 | 816 |
| Anderer Weichkäse, überfett | 55 | 39 | 42 | 42 | 47 | 35 | 40 | 36 | 43 | 55 | 40 | 37 | 511 |
| Weichkäse total | 596 | 559 | 488 | 517 | 577 | 512 | 504 | 600 | 608 | 690 | 702 | 556 | 6'909 |
| Appenzeller Käse | 652 | 615 | 725 | 656 | 673 | 731 | 762 | 787 | 860 | 767 | 750 | 863 | 8'841 |
| Tilsiter | 331 | 306 | 385 | 344 | 391 | 312 | 361 | 341 | 347 | 333 | 334 | 341 | 4'126 |
| Walliser Käse (Walliser Raclettekäse) | 198 | 195 | 230 | 227 | 214 | 126 | 67 | 62 | 245 | 225 | 129 | 184 | 2'102 |
| Schweizer Raclettekäse | 638 | 474 | 628 | 897 | 1'075 | 1'030 | 1'307 | 1'345 | 1'298 | 1'330 | 922 | 665 | 11'609 |
| Vacherin Fribourgeois | 135 | 108 | 116 | 119 | 134 | 197 | 218 | 255 | 298 | 295 | 242 | 205 | 2'322 |
| Tête de Moine | 173 | 148 | 164 | 158 | 170 | 165 | 189 | 212 | 228 | 216 | 202 | 197 | 2'222 |
| Jurakäse | 16 | 19 | 27 | 29 | 24 | 18 | 18 | 17 | 14 | 23 | 11 | 17 | 233 |
| Winzerkäse | 35 | 32 | 34 | 24 | 31 | 22 | 24 | 28 | 24 | 28 | 27 | 29 | 338 |
| Mutschli | 35 | 34 | 50 | 35 | 39 | 44 | 41 | 44 | 79 | 50 | 66 | 37 | 554 |
| Alpkäse halbhart | 0 | 0 | 0 | 0 | 0 | 5 | 3 | 4 | 1'396 | 301 | 52 | 0 | 1'805 |
| Bündner Bergkäse | 80 | 82 | 86 | 87 | 90 | 69 | 42 | 19 | 22 | 49 | 67 | 84 | 777 |
| Berg- und Schnittkäse halbhart | 127 | 120 | 165 | 159 | 155 | 136 | 117 | 124 | 117 | 176 | 157 | 159 | 1'712 |
| St. Paulin Suisse | 63 | 64 | 85 | 64 | 78 | 41 | 77 | 84 | 42 | 59 | 50 | 96 | 803 |
| Schweizer Edamer | 42 | 19 | 33 | 49 | 49 | 38 | 33 | 38 | 8 | 7 | 3 | 20 | 339 |
| Kaltgereifte Käse | 2 | 1 | 1 | 2 | 2 | 1 | 2 | 1 | 2 | 2 | 2 | 2 | 20 |
| Halbhartkäse mit Schimmelbildung | 12 | 11 | 13 | 18 | 20 | 20 | 12 | 10 | 20 | 16 | 13 | 12 | 177 |
| Conveniencekäse | 118 | 75 | 98 | 95 | 130 | 96 | 88 | 109 | 62 | 125 | 101 | 94 | 1'191 |
| Schmelzrohware, vollfett | 122 | 128 | 148 | 109 | 82 | 100 | 67 | 94 | 147 | 170 | 173 | 150 | 1'490 |
| Anderer Halbhartkäse, mager bis viertelfett | 61 | 53 | 53 | 75 | 60 | 61 | 40 | 46 | 49 | 80 | 62 | 79 | 719 |
| Anderer Halbhartkäse, halb- bis vollfett | 722 | 626 | 724 | 756 | 729 | 708 | 713 | 742 | 782 | 832 | 803 | 688 | 8'825 |
| Anderer Halbhartkäse, überfett | 152 | 141 | 192 | 194 | 147 | 167 | 126 | 174 | 174 | 176 | 151 | 164 | 1'958 |
| Halbhartkäse total | 3'713 | 3'253 | 3'955 | 4'097 | 4'292 | 4'085 | 4'307 | 4'579 | 6'214 | 5'260 | 4'319 | 4'085 | 52'159 |
| Emmentaler | 2'859 | 2'626 | 2'984 | 2'931 | 3'106 | 2'563 | 2'161 | 1'736 | 2'348 | 2'441 | 2'468 | 2'550 | 30'773 |
| Switzerland Swiss | 157 | 155 | 290 | 305 | 337 | 313 | 243 | 214 | 222 | 294 | 301 | 272 | 3'103 |
| Gruyère | 2'414 | 2'292 | 2'648 | 2'693 | 2'843 | 2'388 | 2'277 | 2'095 | 2'105 | 2'291 | 1'994 | 2'171 | 28'211 |
| Alpkäse hart | 1 | 0 | 0 | -1 | 49 | 135 | 126 | 190 | 1'011 | 372 | 35 | 0 | 1'918 |
| Anderer Hartkäse, mager bis viertelfett | 2 | 1 | 2 | 8 | 12 | 8 | 4 | 5 | 3 | 4 | 2 | 2 | 53 |
| Anderer Hartkäse, halb- bis vollfett | 756 | 706 | 773 | 963 | 787 | 635 | 641 | 754 | 574 | 780 | 629 | 706 | 8'704 |
| Anderer Hartkäse, überfett | 4 | 4 | 6 | 10 | 11 | 7 | 10 | 8 | 6 | 4 | 5 | 1 | 76 |
| Hartkäse total | 6'193 | 5'784 | 6'703 | 6'909 | 7'145 | 6'049 | 5'462 | 5'002 | 6'269 | 6'186 | 5'434 | 5'702 | 72'838 |
| Sbrinz | 161 | 154 | 180 | 176 | 191 | 172 | 136 | 125 | 173 | 190 | 166 | 178 | 2'002 |
| Extra Hartkäse total | 161 | 154 | 180 | 176 | 191 | 172 | 136 | 125 | 173 | 190 | 166 | 178 | 2'002 |
| Reiner Ziegenkäse | 22 | 37 | 67 | 92 | 95 | 81 | 75 | 74 | 113 | 85 | 38 | 22 | 801 |
| Reiner Schafkäse | 12 | 14 | 21 | 24 | 27 | 21 | 18 | 17 | 13 | 11 | 9 | 10 | 197 |
| Spezialprodukte total | 33 | 50 | 88 | 116 | 121 | 102 | 94 | 91 | 126 | 97 | 47 | 32 | 997 |
| Total alle Käsesorten | 14'003 | 12'849 | 15'132 | 15'319 | 16'394 | 14'637 | 14'092 | 14'077 | 16'541 | 15'783 | 13'806 | 13'647 | 176'280 |

Käseproduktion Februar 2008 im Vergleich zum Vorjahresmonat





Käseproduktion Januar bis Februar 2008 Total 27'728 Tonnen



Konsummilchproduktion

| Milchart | Monatliche Produktion | | Differenz zum Vorjahres-Monat | | Kumulierte Produktion | | Differenz zur Vorjahresperiode | |
|------------------------------|-----------------------|---------------|-------------------------------|-------------|-----------------------|-------------------|--------------------------------|------------|
| | Februar 2007 | Februar 2008 | Tonnen | (%) | Jan. - Febr. 2007 | Jan. - Febr. 2008 | Tonnen | (%) |
| Rohmilch | 941 | 744 | -197 | -20.9 | 1'860 | 1'696 | -164 | -8.8 |
| Fettangereicherte Milch past | 0 | 0 | 0 | | 0 | 0 | 0 | |
| Fettangereicherte Milch UHT | 69 | 64 | -5 | -7.2 | 155 | 145 | -10 | -6.5 |
| Vollmilch past. | 7'087 | 7'829 | 742 | 10.5 | 15'091 | 15'739 | 648 | 4.3 |
| Vollmilch UHT | 17'040 | 15'649 | -1'391 | -8.2 | 31'379 | 28'961 | -2'418 | -7.7 |
| teilentrahmte Milch past. | 6'272 | 6'764 | 492 | 7.8 | 13'170 | 13'679 | 509 | 3.9 |
| teilentrahmte Milch UHT | 6'800 | 11'907 | 5'107 | 75.1 | 18'880 | 22'410 | 3'530 | 18.7 |
| Trinkmagermilch past. | 0 | 18 | 18 | | 1 | 41 | 40 | 4'000.0 |
| Trinkmagermilch UHT | 1'083 | 1'559 | 476 | 44.0 | 2'206 | 2'871 | 665 | 30.1 |
| Total Konsummilch | 39'292 | 44'534 | 5'242 | 13.3 | 82'742 | 85'542 | 2'800 | 3.4 |

Butterproduktion und -verkäufe

Butterproduktion

| | Monatliche Produktion | | Differenz zum Vorjahres-Monat | | Kumulierte Produktion | | Differenz zur Vorjahresperiode | |
|--|-----------------------|--------------|-------------------------------|------|-----------------------|-------------------|--------------------------------|------|
| | Februar 2007 | Februar 2008 | Tonnen | (%) | Jan. - Febr. 2007 | Jan. - Febr. 2008 | Tonnen | (%) |
| | Tonnen | Tonnen | | | Tonnen | Tonnen | | |
| | 3'315 | 3'802 | 487 | 14.7 | 6'955 | 8'105 | 1'150 | 16.5 |

Butterverkäufe (inkl. Importbutter)

| | Monatliche Verkäufe | | Differenz zum Vorjahres-Monat | | Kumulierte Verkäufe | | Differenz zur Vorjahresperiode | |
|--------------------------------------|---------------------|--------------|-------------------------------|-------------|---------------------|-------------------|--------------------------------|---------------|
| | Februar 2007 | Februar 2008 | Tonnen | (%) | Jan. - Febr. 2007 | Jan. - Febr. 2008 | Tonnen | (%) |
| | Tonnen | Tonnen | | | Tonnen | Tonnen | | |
| Vorzugsbutter | 504 | 447 | -57 | -11.3 | 1'009 | 1'046 | 37 | 3.7 |
| Die Butter, Industrie-/Gewerbebutter | 2'022 | 2'415 | 393 | 19.4 | 4'050 | 4'421 | 371 | 9.2 |
| Käsereibutter | 31 | 24 | -7 | -22.6 | 63 | 50 | -13 | -20.6 |
| übrige Butter | 219 | 225 | 6 | 2.7 | 464 | 427 | -37 | -8.0 |
| Eingesottene Butter | 359 | 403 | 44 | 12.3 | 737 | 822 | 85 | 11.5 |
| übrige entwässerte Butter | 33 | 35 | 2 | 6.1 | 57 | 66 | 9 | 15.8 |
| Total Inlandverkäufe | 3'168 | 3'549 | 381 | 12.0 | 6'380 | 6'832 | 452 | 7.1 |
| Export | 0 | 0 | 0 | | 0 | 0 | 0 | |
| Veredelungsverkehr* | 0 | 19 | 19 | | 1 | 19 | 18 | 1800.0 |
| Total | 3'168 | 3'568 | 400 | 12.6 | 6'381 | 6'851 | 470 | 7.4 |

* Quelle: BOB

Produktion von Milchspezialitäten

Konsumrahm

| | Monatliche Produktion | | Differenz zum Vorjahres-Monat | | Kumulierte Produktion | | Differenz zur Vorjahresperiode | |
|-------------------------|-----------------------|---------------------|-------------------------------|------------|--------------------------|--------------------------|--------------------------------|------------|
| | <i>Februar 2007</i> | <i>Februar 2008</i> | Tonnen | (%) | <i>Jan. - Febr. 2007</i> | <i>Jan. - Febr. 2008</i> | Tonnen | (%) |
| | Tonnen | Tonnen | | | Tonnen | Tonnen | | |
| Doppelrahm | 43 | 49 | 6 | 14.0 | 91 | 89 | -2 | -2.2 |
| Vollrahm 35% | 2'056 | 2'226 | 170 | 8.3 | 3'880 | 4'171 | 291 | 7.5 |
| Halbrahm | 1'295 | 1'252 | -43 | -3.3 | 2'366 | 2'252 | -114 | -4.8 |
| Kaffeerahm | 2'025 | 2'006 | -19 | -0.9 | 4'047 | 4'104 | 57 | 1.4 |
| Total Konsumrahm | 5'419 | 5'533 | 114 | 2.1 | 10'384 | 10'616 | 232 | 2.2 |

Andere Milchspezialitäten

| | Monatliche Produktion | | Differenz zum Vorjahres-Monat | | Kumulierte Produktion | | Differenz zur Vorjahresperiode | |
|-----------------|-----------------------|---------------------|-------------------------------|-------|--------------------------|--------------------------|--------------------------------|-------|
| | <i>Februar 2007</i> | <i>Februar 2008</i> | Tonnen | (%) | <i>Jan. - Febr. 2007</i> | <i>Jan. - Febr. 2008</i> | Tonnen | (%) |
| | Tonnen | Tonnen | | | Tonnen | Tonnen | | |
| Sauermilch | 404 | 470 | 66 | 16.3 | 883 | 1'075 | 192 | 21.7 |
| Sauerrahm | 139 | 154 | 15 | 10.8 | 274 | 306 | 32 | 11.7 |
| Dessertprodukte | 1'964 | 2'155 | 191 | 9.7 | 3'827 | 4'114 | 287 | 7.5 |
| Milchgetränke | 4'544 | 4'828 | 284 | 6.3 | 9'949 | 10'605 | 656 | 6.6 |
| Jogurt | 11'163 | 11'538 | 375 | 3.4 | 23'181 | 23'549 | 368 | 1.6 |
| Kefir | 5 | 16 | 11 | 220.0 | 11 | 29 | 18 | 163.6 |
| Speiseeis | 1'916 | 2'061 | 145 | 7.6 | 3'296 | 4'103 | 807 | 24.5 |

Produktion Milchpulver und Milchkondensat

| | Monatliche Produktion | | Differenz zum Vorjahres-Monat | | Kumulierte Produktion | | Differenz zur Vorjahresperiode | |
|---|------------------------|------------------------|-------------------------------|--------|-----------------------------|-----------------------------|--------------------------------|-------|
| | Februar 2007 Tonnen | Februar 2008 Tonnen | Tonnen | (%) | Jan. - Febr. 2007 Tonnen | Jan. - Febr. 2008 Tonnen | Tonnen | (%) |
| Vollmilchpulver | 1'102 | 1'514 | 412 | 37.4 | 2'606 | 3'172 | 566 | 21.7 |
| Teilentrahmtes Milchpulver | 399 | 291 | -108 | -27.1 | 570 | 626 | 56 | 9.8 |
| Fettangereichertes Milchpulver & Rahmpulver | 60 | 0 | -60 | -100.0 | 101 | 44 | -57 | -56.4 |
| Magermilchpulver | 2'419 | 2'481 | 62 | 2.6 | 4'798 | 5'167 | 369 | 7.7 |
| Buttermilchpulver | 14 | 72 | 58 | 414.3 | 41 | 120 | 79 | 192.7 |
| Molkenpulver | 97 | 92 | -5 | -5.2 | 201 | 153 | -48 | -23.9 |
| Milchkondensat | 206 | 119 | -87 | -42.2 | 466 | 416 | -50 | -10.7 |

Käseexport nach Produkten/Gruppen

| Käsesorte / Kategorie | Monatliche Exporte | | Differenz zum Vorjahres-Monat | | Kumulierte Exporte | | Differenz zur Vorjahresperiode | |
|-------------------------------------|------------------------|------------------------|-------------------------------|--------------|-----------------------------|-----------------------------|--------------------------------|--------------|
| | Februar 2007 Tonnen | Februar 2008 Tonnen | Tonnen | (%) | Jan. - Febr. 2007 Tonnen | Jan. - Febr. 2008 Tonnen | Tonnen | (%) |
| Frischkäse inkl. Quark total | 23.3 | 68.7 | 45.4 | 195.3 | 46.2 | 120.7 | 74.6 | 161.5 |
| Vacherin Mont d'Or | 3.5 | 2.7 | -0.8 | -23.2 | 9.5 | 8.3 | -1.2 | -12.2 |
| Weichkäse andere | 27.7 | 47.3 | 19.6 | 70.5 | 36.5 | 82.7 | 46.2 | 126.7 |
| Weichkäse total | 31.2 | 49.9 | 18.7 | 60.1 | 46.0 | 91.1 | 45.1 | 98.0 |
| Appenzeller Käse | 471.8 | 426.6 | -45.3 | -9.6 | 847.4 | 899.8 | 52.4 | 6.2 |
| Tilsiter | 47.0 | 61.5 | 14.5 | 30.9 | 69.9 | 97.7 | 27.8 | 39.7 |
| Raclette | 59.9 | 52.0 | -7.9 | -13.2 | 100.9 | 146.2 | 45.2 | 44.8 |
| Vacherin Fribourgeois | 26.4 | 23.9 | -2.5 | -9.3 | 54.9 | 49.4 | -5.5 | -9.9 |
| Tête de Moine | 86.6 | 110.2 | 23.5 | 27.2 | 183.8 | 228.9 | 45.1 | 24.5 |
| Halbhartkäse andere | 150.3 | 290.6 | 140.4 | 93.4 | 202.7 | 607.8 | 405.1 | 199.8 |
| Halbhartkäse total | 841.9 | 964.7 | 122.8 | 14.6 | 1'459.7 | 2'029.8 | 570.1 | 39.1 |
| Emmentaler | 1'526.1 | 2'196.2 | 670.2 | 43.9 | 3'272.6 | 4'043.5 | 770.9 | 23.6 |
| Gruyère | 894.6 | 968.0 | 73.4 | 8.2 | 1'628.9 | 2'219.1 | 590.1 | 36.2 |
| Switzerland Swiss | 58.0 | 184.5 | 126.5 | 218.2 | 166.5 | 349.2 | 182.7 | 109.7 |
| Hartkäse übrige | 82.7 | 90.7 | 8.0 | 9.7 | 177.9 | 193.8 | 15.9 | 9.0 |
| Hartkäse total | 2'561.4 | 3'439.4 | 878.1 | 34.3 | 5'245.9 | 6'805.6 | 1'559.7 | 29.7 |
| Sbrinz | 24.0 | 27.4 | 3.4 | 14.0 | 60.7 | 63.2 | 2.5 | 4.1 |
| Extra Hartkäse total | 24.0 | 27.4 | 3.4 | 14.0 | 60.7 | 63.2 | 2.5 | 4.1 |
| Schmelzkäse total | 366.4 | 329.9 | -36.4 | -9.9 | 691.0 | 727.8 | 36.8 | 5.3 |
| Fertigfondue | 266.1 | 310.4 | 44.2 | 16.6 | 653.0 | 742.3 | 89.3 | 13.7 |
| andere Käse total | 15.3 | 77.6 | 62.3 | 407.7 | 25.8 | 220.0 | 194.3 | 754.0 |
| Total | 4'129.5 | 5'268.0 | 1'138.5 | 27.6 | 8'228.2 | 10'800.4 | 2'572.3 | 31.3 |

Quelle: OZD

Käseexport nach Ländern

Februar 2008

| | Emmentaler | Gruyère | Sbrinz | Switzerland Swiss | übrige Hartkäse | Hartkäse total | Appenzeller Käse | Vacherin Fribourgeois | Raclette | Tête de Moine | Tilsiter | übrige Halbhartkäse | Halbhartkäse total | Frischkäse inkl. Quark | Vacherin Mont d'Or | übrige Weichkäse | Weichkäse total | Schmelzkäse | andere Käse | Fertigfondue | TOTAL | |
|--|----------------|--------------|-------------|-------------------|-----------------|----------------|------------------|-----------------------|-------------|---------------|-------------|---------------------|--------------------|------------------------|--------------------|------------------|-----------------|--------------|-------------|--------------|-------|----------------|
| Land | t | t | t | t | t | t | t | t | t | t | t | t | t | t | t | t | t | t | t | t | t | t |
| EUROPA | | | | | | | | | | | | | | | | | | | | | | |
| Deutschland | 334.0 | 245.1 | * | * | 56.6 | 635.7 | 334.2 | 3.1 | 14.6 | 68.6 | 55.3 | 165.8 | 641.6 | 28.1 | 0.1 | 36.8 | 64.9 | 34.2 | 26.4 | 22.0 | | 1'424.9 |
| Frankreich | 219.8 | 169.7 | * | * | 0.6 | 390.1 | 49.1 | 15.2 | 6.2 | 19.6 | * | 2.2 | 92.3 | 0.1 | * | 7.3 | 7.4 | 0.0 | 0.5 | 69.2 | | 559.5 |
| Italien | 1'269.0 | 30.0 | * | * | 21.2 | 1'320.2 | 1.4 | * | * | 3.6 | * | 2.8 | 7.8 | 39.2 | 0.0 | 0.0 | 39.2 | 242.7 | 0.0 | 10.8 | | 1'620.7 |
| BeNeLux | 74.2 | 54.8 | * | * | 1.0 | 130.0 | 7.0 | 1.6 | 12.6 | 8.0 | 0.0 | 0.7 | 29.9 | 0.0 | * | 0.0 | 0.0 | 28.7 | 2.2 | 77.8 | | 268.6 |
| Grossbritannien | 21.7 | 60.9 | * | * | 0.0 | 82.6 | 1.5 | * | * | 0.3 | * | 0.2 | 2.0 | 0.0 | * | 0.1 | 0.1 | 0.1 | 0.0 | 4.3 | | 89.1 |
| Spanien/Portugal | 6.9 | 18.7 | * | * | 0.0 | 25.6 | * | * | * | * | * | 0.0 | 0.0 | 0.0 | * | 0.0 | 0.0 | 4.2 | 0.0 | 0.0 | | 29.8 |
| Europa nicht zugeordnet / übriges Europa (Fertigfondue übrige Länder ganze Welt) | 132.1 | 63.8 | 25.0 | 2.6 | 5.8 | 229.3 | 25.9 | 3.2 | 6.4 | 7.9 | 4.9 | 113.0 | 161.3 | 0.3 | 2.3 | 0.0 | 2.6 | 0.0 | 0.0 | 79.2 | | 472.5 |
| TOTAL EUROPA | 2'057.8 | 642.9 | 25.0 | 2.6 | 85.2 | 2'813.5 | 419.0 | 23.2 | 39.9 | 107.9 | 60.2 | 284.7 | 935.0 | 67.7 | 2.4 | 44.2 | 114.2 | 310.0 | 29.1 | 263.2 | | 4'465.0 |
| Andere Länder | | | | | | | | | | | | | | | | | | | | | | |
| Kanada | 60.0 | * | * | * | 0.0 | 60.0 | 1.7 | * | * | 0.5 | * | 0.2 | 2.3 | 0.0 | * | 0.0 | 0.0 | 11.3 | 0.0 | 18.1 | | 91.7 |
| USA | 33.4 | 103.4 | * | * | 5.1 | 141.9 | 4.4 | 0.5 | 1.5 | 1.1 | * | 2.9 | 10.4 | 0.0 | * | 0.5 | 0.5 | 0.7 | 0.0 | 29.1 | | 182.6 |
| Kanada / USA nicht zugeordnet/ andere Länder | 45.1 | 221.6 | 2.4 | 181.8 | 0.5 | 451.4 | 1.4 | 0.3 | 10.6 | 0.6 | 1.3 | 2.8 | 17.0 | 1.0 | 0.3 | 2.6 | 3.9 | 8.0 | 48.4 | 0.0 | | 528.7 |
| TOTAL ANDERE LÄNDER | 138.5 | 325.0 | 2.4 | 181.8 | 5.5 | 653.3 | 7.5 | 0.7 | 12.1 | 2.2 | 1.3 | 5.9 | 29.8 | 1.0 | 0.3 | 3.1 | 4.4 | 20.0 | 48.5 | 47.1 | | 803.0 |
| TOTAL | 2'196.2 | 968.0 | 27.4 | 184.5 | 90.7 | 3'466.8 | 426.6 | 23.9 | 52.0 | 110.2 | 61.5 | 290.6 | 964.7 | 68.7 | 2.7 | 47.3 | 118.6 | 329.9 | 77.6 | 310.4 | | 5'268.0 |

* Aus Datenschutzgründen sind Käseexporte mit weniger als drei Exporteuren nicht nach Ländern zugeordnet (Zusammenzug in 'Europa nicht zugeordnet' bzw. Kanada USA nicht zugeordnet/andere Länder)

Quelle: OZD

Käseexport nach Ländern

Februar 2007

| | Emmentaler | Gruyere | Sbrinz | Switzerland Swiss | übrige Hartkäse | Hartkäse total | Appenzeller Käse | Vacherin Fribourgeois | Raclette | Tête de Moine | Tilsiter | übrige Halbhartkäse | Halbhartkäse total | Frischkäse total | Vacherin inkl. Quark | übrige Weichkäse | Weichkäse total | Schmelzkäse | andere Käse | Fertigfondue | TOTAL | |
|---|------------|---------|--------|-------------------|-----------------|-----------------------|------------------|-----------------------|----------|---------------|----------|---------------------|---------------------------|------------------|----------------------|------------------|------------------------|-------------|-------------|--------------|--------------|---------|
| Land | t | t | t | t | t | t | t | t | t | t | t | t | t | t | t | t | t | t | t | t | t | t |
| EUROPA | | | | | | | | | | | | | | | | | | | | | | |
| Deutschland | 238.6 | 197.3 | * | * | 8.5 | 444.4 | 343.0 | 3.2 | 16.5 | 53.0 | 40.2 | 104.2 | 560.0 | 8.0 | 0.2 | 5.1 | 13.2 | 15.0 | 3.3 | 15.4 | | 1'051.3 |
| Frankreich | 181.9 | 163.2 | * | * | 0.1 | 345.2 | 68.0 | 17.3 | 10.5 | 20.9 | * | 4.2 | 120.9 | 0.1 | * | 5.4 | 5.5 | 0.9 | 0.9 | 23.8 | | 497.1 |
| Italien | 665.9 | 28.2 | * | * | 63.9 | 757.9 | 1.6 | * | * | 2.2 | * | 0.5 | 4.3 | 14.7 | 0.0 | 0.0 | 14.7 | 269.3 | 0.0 | 5.2 | | 1'051.5 |
| BeNeLux | 71.6 | 50.6 | * | * | 0.4 | 122.7 | 4.6 | 1.3 | 10.9 | 3.6 | 0.0 | 0.3 | 20.7 | 0.0 | * | 0.0 | 0.0 | 32.5 | 9.0 | 65.9 | | 250.7 |
| Grossbritannien | 22.9 | 42.9 | * | * | 0.1 | 65.8 | 1.0 | * | * | 0.1 | * | 0.0 | 1.0 | 0.0 | * | 0.0 | 0.0 | 2.1 | 0.0 | 3.4 | | 72.3 |
| Spanien/Portugal | 21.9 | 34.5 | * | * | 0.0 | 56.4 | * | * | * | * | * | 0.0 | 0.0 | 0.0 | * | 0.0 | 0.0 | 0.9 | 0.0 | 0.0 | | 57.3 |
| Europa nicht zugeordnet / übriges Europa | 87.1 | 63.1 | 17.6 | 5.0 | 1.3 | 174.0 | 43.9 | 2.4 | 1.7 | 4.1 | 5.5 | 35.3 | 92.8 | 0.1 | 3.2 | 16.1 | 19.3 | 0.1 | 0.2 | 82.4 | | 368.9 |
| TOTAL EUROPA | 1'289.9 | 579.7 | 17.6 | 5.0 | 74.2 | 1'966.3 | 462.1 | 24.2 | 39.5 | 83.8 | 45.7 | 144.5 | 799.8 | 22.9 | 3.4 | 26.6 | 52.8 | 320.8 | 13.3 | 196.0 | | 3'349.0 |
| Andere Länder | | | | | | | | | | | | | | | | | | | | | | |
| Kanada | 65.9 | * | * | * | 0.4 | 66.3 | 2.4 | * | * | 2.0 | * | 3.0 | 7.4 | 0.0 | * | 0.0 | 0.0 | 16.3 | 0.4 | 60.5 | | 151.0 |
| USA | 108.6 | 193.1 | * | * | 8.1 | 309.9 | 5.9 | 0.7 | 11.8 | 0.5 | * | 1.4 | 20.3 | 0.0 | * | 0.1 | 0.1 | 17.9 | 0.2 | 9.6 | | 358.0 |
| Kanada / USA nicht zugeordnet/ andere Länder | 61.7 | 121.8 | 6.5 | 53.0 | 0.0 | 242.9 | 1.3 | 1.5 | 8.6 | 0.3 | 1.3 | 1.4 | 14.5 | 0.4 | 0.1 | 1.1 | 1.5 | 11.4 | 1.4 | 0.0 | | 271.6 |
| TOTAL ANDERE LÄNDER | 236.2 | 314.9 | 6.5 | 53.0 | 8.6 | 619.1 | 9.7 | 2.2 | 20.4 | 2.8 | 1.3 | 5.8 | 42.2 | 0.4 | 0.1 | 1.2 | 1.6 | 45.6 | 2.0 | 70.1 | | 780.5 |
| TOTAL | 1'526.1 | 894.6 | 24.0 | 58.0 | 82.7 | 2'585.4 | 471.8 | 26.4 | 59.9 | 86.6 | 47.0 | 150.3 | 841.9 | 23.3 | 3.5 | 27.7 | 54.5 | 366.4 | 15.3 | 266.1 | | 4'129.5 |

* Aus Datenschutzgründen sind Käseexporte mit weniger als drei Exporteuren nicht nach Ländern zugeordnet (Zusammenzug in 'Europa nicht zugeordnet' bzw. Kanada USA nicht zugeordnet/andere Länder)

Quelle: OZD

Käseexport nach Ländern, kumuliert

Januar bis Februar 2008

| Land | Emmentaler | | Gruyère | | Sbrinz | | Switzerland Swiss | | übrige Hartkäse | | Hartkäse total | | Appenzeller Käse | | Vacherin Fribourgeois | | Raclette | | Tête de Moine | | Tilsiter | | übrige Halbhartkäse | | Halbhartkäse total | | Frischkäse inkl. Quark | | Vacherin Mont d'Or | | übrige Weichkäse | | Weichkäse total | | Schmelzkäse | | andere Käse | | Fertigfondue (Quelle: SE55K) | | TOTAL | | | | | |
|--|----------------|----------------|-------------|--------------|--------------|----------------|-------------------|-------------|-----------------|--------------|----------------|--------------|------------------|--------------|-----------------------|-------------|--------------|--------------|---------------|--------------|----------|---|---------------------|---|--------------------|---|------------------------|---|--------------------|---|------------------|---|-----------------|---|-------------|---|-------------|---|------------------------------|---|-------|----------------|-----------------|---------|--|--|
| | t | t | t | t | t | t | t | t | t | t | t | t | t | t | t | t | t | t | t | t | t | t | t | t | t | t | t | t | t | t | t | t | t | t | t | t | t | t | t | t | t | t | t | | | |
| EUROPA | | | | | | | | | | | | | | | | | | | | | | | | | | | | | | | | | | | | | | | | | | | | | | |
| Deutschland | 576.7 | 447.3 | * | * | 88.4 | 1'112.5 | 679.0 | 6.0 | 34.3 | 126.6 | 79.3 | 303.4 | 1'228.6 | 38.7 | 0.3 | 64.3 | 103.3 | 64.2 | 47.6 | 95.7 | | | | | | | | | | | | | | | | | | | | | | | | 2'651.8 | | |
| Frankreich | 382.0 | 310.8 | * | * | 2.0 | 694.8 | 110.9 | 31.6 | 22.3 | 53.4 | * | 6.4 | 224.7 | 0.2 | * | 14.0 | 14.3 | 0.5 | 1.3 | 147.5 | | | | | | | | | | | | | | | | | | | | | | | | 1'083.1 | | |
| Italien | 2'195.6 | 58.2 | * | * | 66.6 | 2'320.3 | 4.4 | * | * | 5.9 | * | 3.0 | 13.3 | 79.0 | 0.0 | 0.0 | 79.1 | 507.0 | 0.0 | 18.0 | | | | | | | | | | | | | | | | | | | | | | | 2'937.8 | | | |
| BeNeLux | 154.1 | 106.3 | * | * | 1.2 | 261.6 | 13.8 | 2.8 | 27.0 | 15.3 | 0.1 | 1.4 | 60.4 | 0.0 | * | 0.0 | 0.0 | 57.4 | 16.9 | 159.7 | | | | | | | | | | | | | | | | | | | | | | | 556.1 | | | |
| Grossbritannien | 57.9 | 124.0 | * | * | 0.0 | 181.9 | 2.6 | * | * | 0.6 | * | 0.4 | 3.6 | 0.0 | * | 0.1 | 0.1 | 3.9 | 0.0 | 10.8 | | | | | | | | | | | | | | | | | | | | | | | 200.2 | | | |
| Spanien/Portugal | 16.7 | 38.9 | * | * | 0.0 | 55.6 | * | * | * | * | * | 0.0 | 0.0 | 0.0 | * | 0.0 | 0.0 | 5.1 | 0.0 | 0.0 | | | | | | | | | | | | | | | | | | | | | | | 60.6 | | | |
| Europa nicht zugeordnet / übriges Europa (Fertigfondue übrige Länder ganze Welt) | 226.0 | 134.3 | 50.4 | 24.0 | 12.3 | 446.9 | 58.8 | 5.0 | 14.6 | 20.4 | 15.8 | 264.5 | 379.1 | 1.6 | 6.8 | 0.2 | 8.6 | 0.5 | 0.0 | 175.2 | | | | | | | | | | | | | | | | | | | | | | | | 1'010.5 | | |
| TOTAL EUROPA | 3'609.0 | 1'219.7 | 50.4 | 24.0 | 170.5 | 5'073.5 | 869.4 | 45.4 | 98.2 | 222.2 | 95.3 | 579.2 | 1'909.6 | 119.6 | 7.1 | 78.7 | 205.3 | 638.6 | 65.9 | 607.0 | | | | | | | | | | | | | | | | | | | | | | | 8'500.0 | | | |
| Andere Länder | | | | | | | | | | | | | | | | | | | | | | | | | | | | | | | | | | | | | | | | | | | | | | |
| Kanada | 135.4 | * | * | * | 0.4 | 135.8 | 5.7 | * | * | 3.0 | * | 6.2 | 14.9 | 0.0 | * | 0.0 | 0.0 | 47.9 | 0.0 | 79.9 | | | | | | | | | | | | | | | | | | | | | | | | 278.5 | | |
| USA | 212.7 | 590.1 | * | * | 8.2 | 810.9 | 22.5 | 1.4 | 19.3 | 2.7 | * | 18.0 | 63.9 | 0.0 | * | 0.6 | 0.6 | 13.4 | 0.3 | 55.4 | | | | | | | | | | | | | | | | | | | | | | | | 944.5 | | |
| Kanada / USA nicht zugeordnet/ andere Länder | 86.5 | 409.3 | 12.7 | 325.2 | 14.7 | 848.5 | 2.3 | 2.6 | 28.7 | 1.0 | 2.4 | 4.4 | 41.4 | 1.2 | 1.3 | 3.5 | 5.9 | 27.9 | 153.8 | 0.0 | | | | | | | | | | | | | | | | | | | | | | | | 1'077.4 | | |
| TOTAL ANDERE LÄNDER | 434.5 | 999.4 | 12.7 | 325.2 | 23.4 | 1'795.2 | 30.5 | 4.0 | 48.0 | 6.7 | 2.4 | 28.6 | 120.2 | 1.2 | 1.3 | 4.0 | 6.5 | 89.1 | 154.1 | 135.3 | | | | | | | | | | | | | | | | | | | | | | 2'300.4 | | | | |
| TOTAL | 4'043.5 | 2'219.1 | 63.2 | 349.2 | 193.8 | 6'868.8 | 899.8 | 49.4 | 146.2 | 228.9 | 97.7 | 607.8 | 2'029.8 | 120.7 | 8.3 | 82.7 | 211.8 | 727.8 | 220.0 | 742.3 | | | | | | | | | | | | | | | | | | | | | | | 10'800.4 | | | |

* Aus Datenschutzgründen sind Käseexporte mit weniger als drei Exporteuren nicht nach Ländern zugeordnet (Zusammenzug in 'Europa nicht zugeordnet' bzw. Kanada USA nicht zugeordnet/andere Länder)

Quelle: OZD

Käseexport nach Ländern

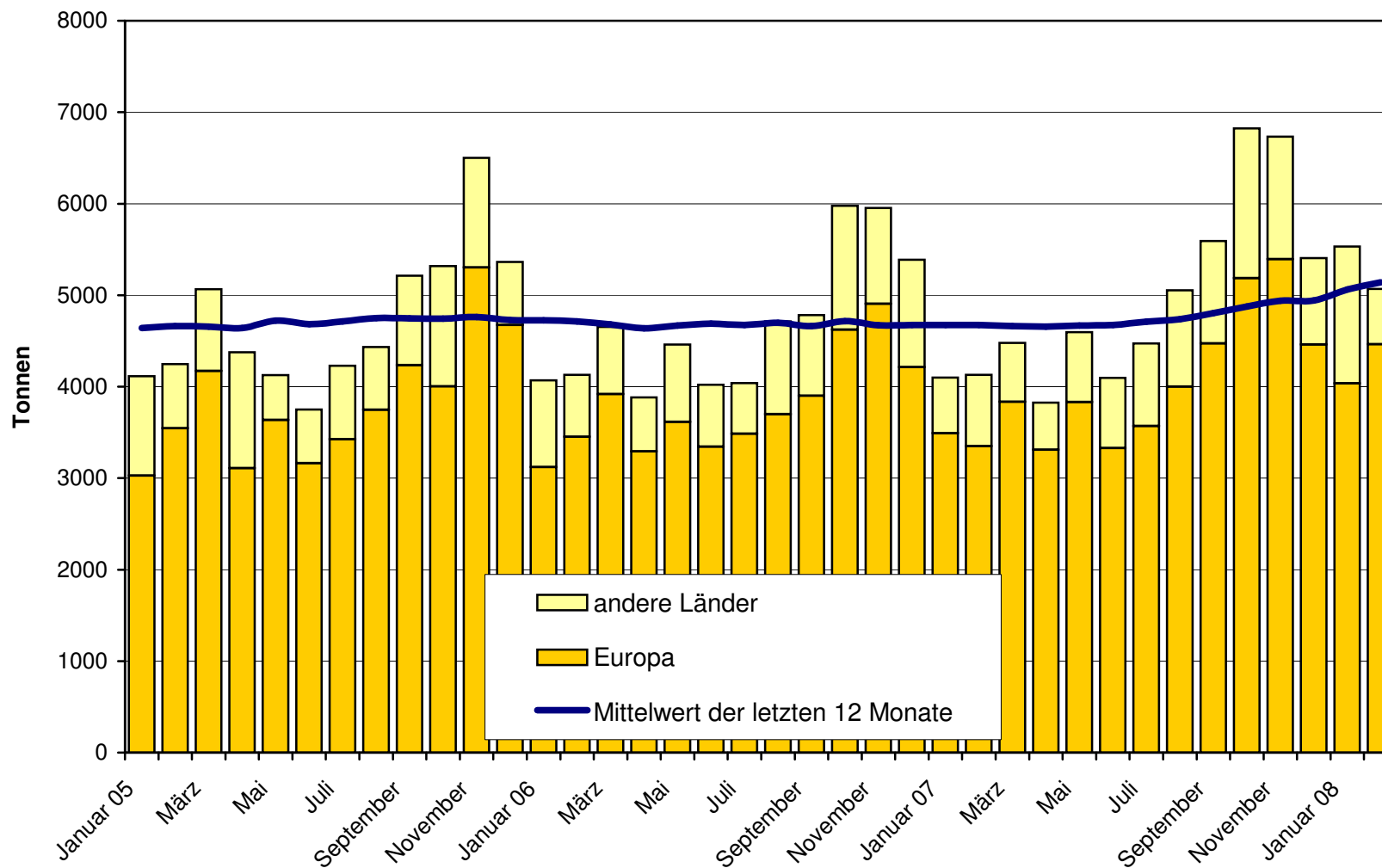
Januar bis Februar 2007

| | Emmentaler | Gruyere | Sbrinz | Switzerland Swiss | übrige Hartkäse | Hartkäse total | Appenzeller Käse | Vacherin Fribourgeois | Raclette | Tête de Moine | Tilsiter | übrige Halbhartkäse | Halbhartkäse total | Frischkäse inkl. Quark | Vacherin Mont d'Or | übrige Weichkäse | Weichkäse total | Schmelzkäse | andere Käse | Fertigfondue | TOTAL | |
|---|------------|---------|--------|-------------------|-----------------|----------------|------------------|-----------------------|----------|---------------|----------|---------------------|--------------------|------------------------|--------------------|------------------|-----------------|-------------|-------------|--------------|---------|---|
| Land | t | t | t | t | t | t | t | t | t | t | t | t | t | t | t | t | t | t | t | t | t | t |
| EUROPA | | | | | | | | | | | | | | | | | | | | | | |
| Deutschland | 378.8 | 348.0 | * | * | 11.8 | 738.5 | 610.7 | 5.3 | 23.0 | 97.2 | 56.6 | 143.4 | 936.1 | 11.2 | 0.4 | 7.0 | 18.6 | 24.8 | 6.6 | 126.0 | 1'850.5 | |
| Frankreich | 350.7 | 309.9 | * | * | 0.1 | 660.7 | 117.8 | 37.1 | 14.2 | 47.1 | * | 6.6 | 222.8 | 0.3 | * | 10.8 | 11.1 | 2.6 | 1.7 | 107.6 | 1'006.7 | |
| Italien | 1'751.2 | 68.2 | * | * | 150.1 | 1'969.4 | 3.1 | * | * | 6.0 | * | 0.5 | 9.6 | 33.9 | 0.1 | 0.0 | 34.0 | 496.8 | 0.0 | 14.4 | 2'524.2 | |
| BeNeLux | 154.6 | 110.0 | * | * | 1.0 | 265.7 | 11.1 | 2.8 | 20.3 | 13.5 | 0.0 | 1.5 | 49.4 | 0.0 | * | 0.0 | 0.0 | 65.2 | 14.5 | 133.6 | 528.3 | |
| Grossbritannien | 53.1 | 86.7 | * | * | 0.2 | 140.0 | 2.1 | * | * | 0.2 | * | 0.0 | 2.3 | 0.0 | * | 0.0 | 0.0 | 4.4 | 0.0 | 5.2 | 151.8 | |
| Spanien/Portugal | 34.5 | 64.4 | * | * | 0.0 | 98.9 | * | * | * | * | * | 0.0 | 0.0 | 0.0 | * | 0.0 | 0.0 | 0.9 | 0.0 | 0.0 | 99.8 | |
| Europa nicht zugeordnet / übriges Europa | 195.3 | 116.0 | 44.5 | 7.3 | 3.6 | 366.8 | 64.7 | 5.5 | 7.6 | 13.9 | 10.2 | 37.7 | 139.6 | 0.1 | 8.9 | 16.1 | 25.1 | 3.6 | 0.2 | 144.7 | 680.0 | |
| TOTAL EUROPA | 2'918.1 | 1'103.2 | 44.5 | 7.3 | 166.9 | 4'240.0 | 809.4 | 50.8 | 65.2 | 177.8 | 66.8 | 189.8 | 1'359.7 | 45.4 | 9.4 | 33.9 | 88.8 | 598.2 | 23.0 | 531.4 | 6'841.2 | |
| Andere Länder | | | | | | | | | | | | | | | | | | | | | | |
| Kanada | 76.6 | * | * | * | 0.7 | 77.3 | 4.3 | * | * | 2.9 | * | 5.1 | 12.3 | 0.0 | * | 0.0 | 0.0 | 34.4 | 0.4 | 98.2 | 222.6 | |
| USA | 186.7 | 293.9 | * | * | 10.1 | 490.7 | 30.2 | 1.2 | 17.5 | 1.7 | * | 4.6 | 55.2 | 0.0 | * | 1.1 | 1.1 | 31.7 | 0.2 | 23.4 | 602.3 | |
| Kanada / USA nicht zugeordnet/ andere Länder | 91.3 | 231.7 | 16.1 | 159.2 | 0.2 | 498.6 | 3.4 | 2.9 | 18.2 | 1.5 | 3.1 | 3.2 | 32.4 | 0.7 | 0.1 | 1.5 | 2.3 | 26.6 | 2.1 | 0.0 | 562.0 | |
| TOTAL ANDERE LÄNDER | 354.5 | 525.7 | 16.1 | 159.2 | 11.0 | 1'066.6 | 38.0 | 4.1 | 35.8 | 6.0 | 3.1 | 12.9 | 99.9 | 0.7 | 0.1 | 2.6 | 3.4 | 92.7 | 2.7 | 121.6 | 1'386.9 | |
| TOTAL | 3'272.6 | 1'628.9 | 60.7 | 166.5 | 177.9 | 5'306.6 | 847.4 | 54.9 | 100.9 | 183.8 | 69.9 | 202.7 | 1'459.7 | 46.2 | 9.5 | 36.5 | 92.2 | 691.0 | 25.8 | 653.0 | 8'228.2 | |

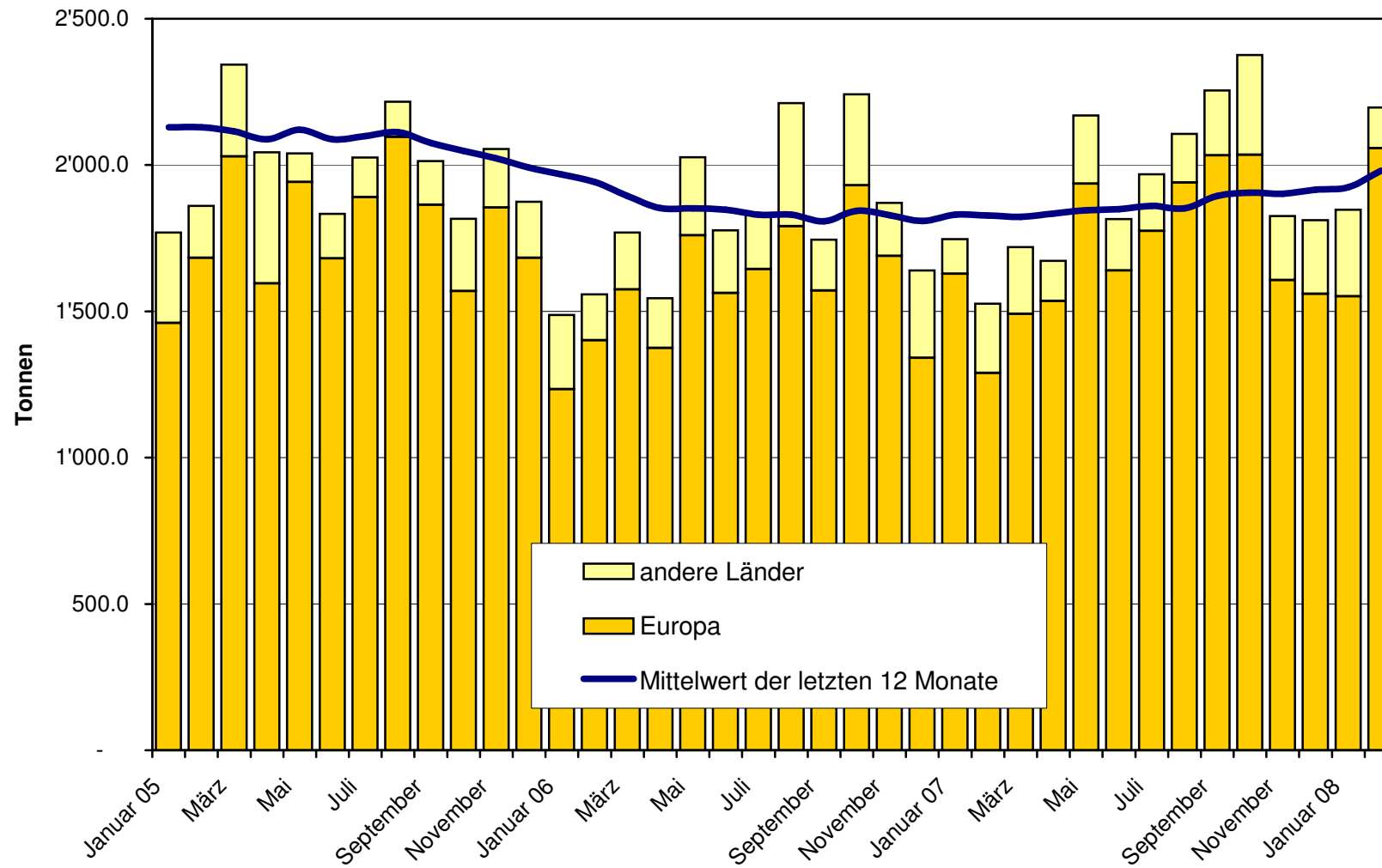
* Aus Datenschutzgründen sind Käseexporte mit weniger als drei Exporteuren nicht nach Ländern zugeordnet (Zusammenzug in 'Europa nicht zugeordnet' bzw. Kanada USA nicht zugeordnet/andere Länder)

Quelle: OZD

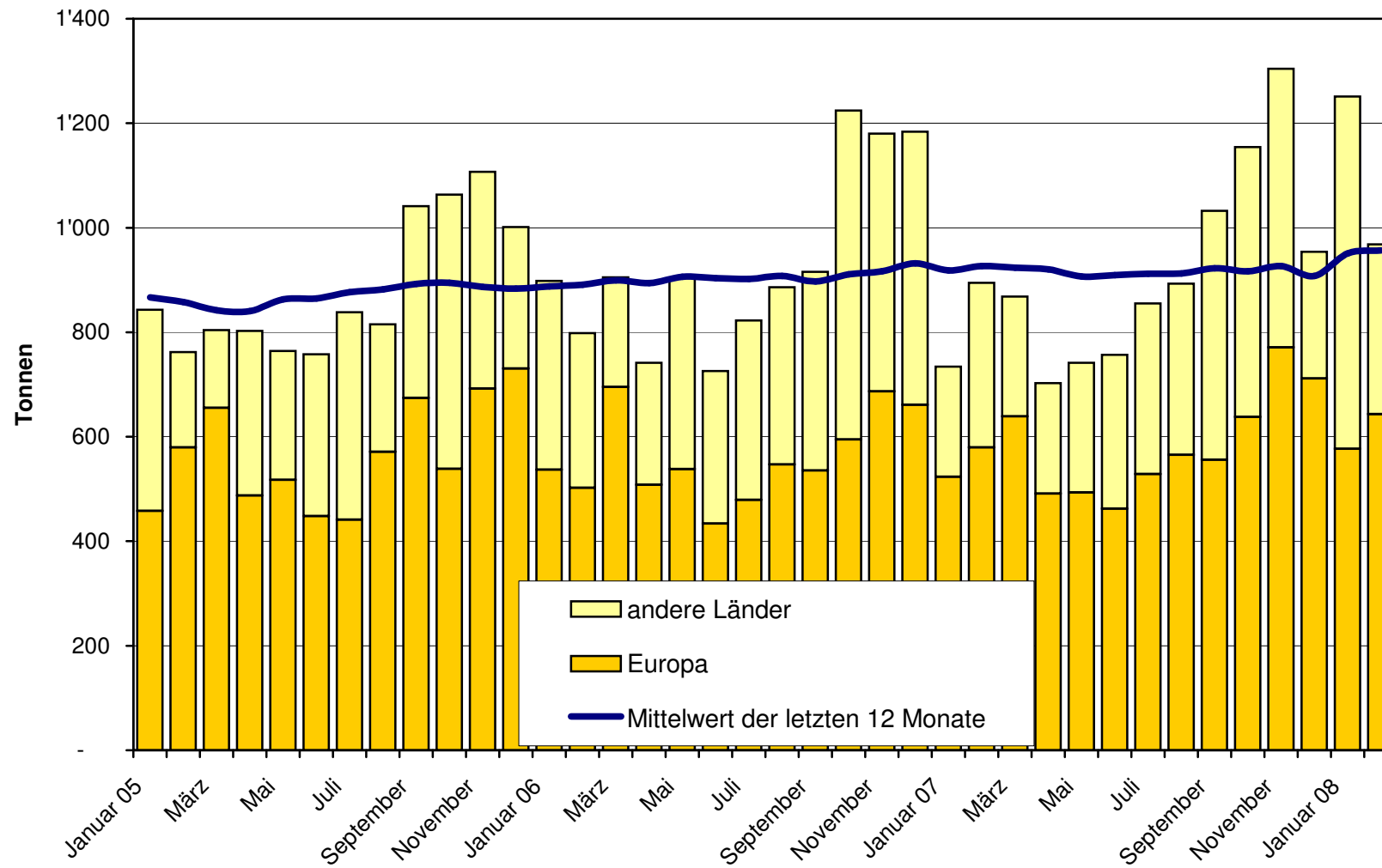
Total Käseexport (inkl. Fertigfondue und Schmelzkäse) ab 2005
Mittelwert der letzten 12 Monate



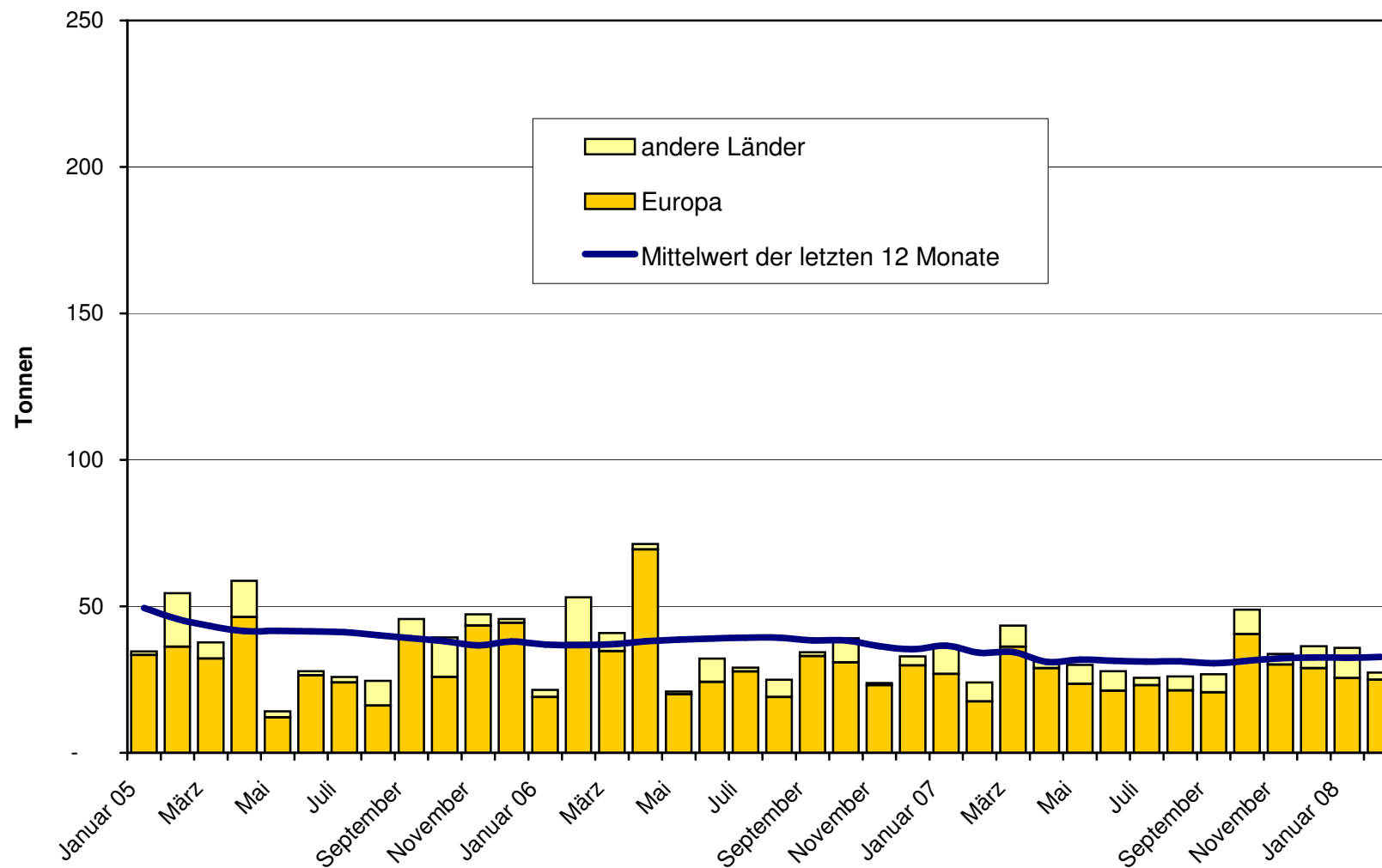
Emmentaler Export ab 2005 Mittelwert der letzten 12 Monate



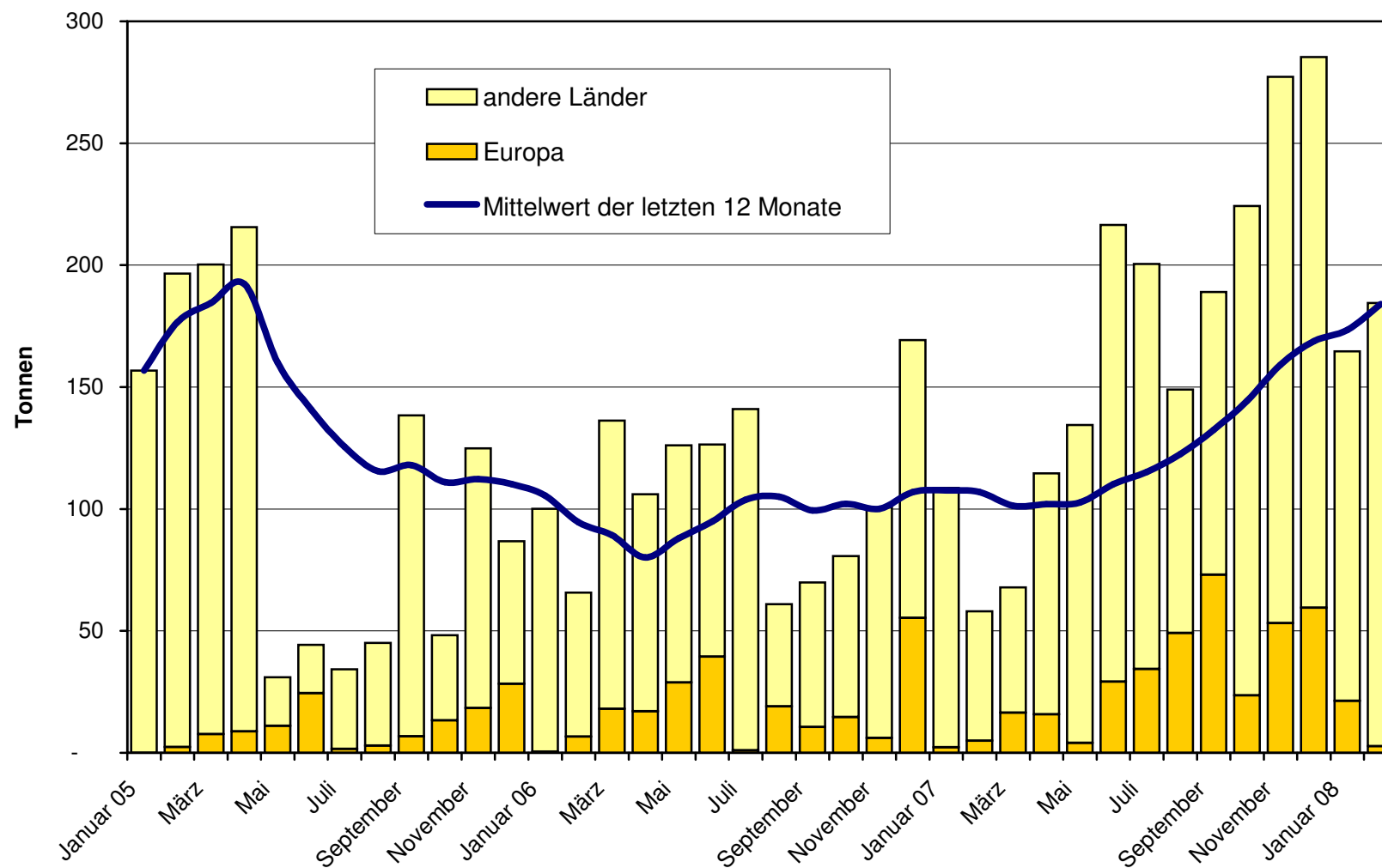
Gruyère Export ab 2005 Mittelwert der letzten 12 Monate



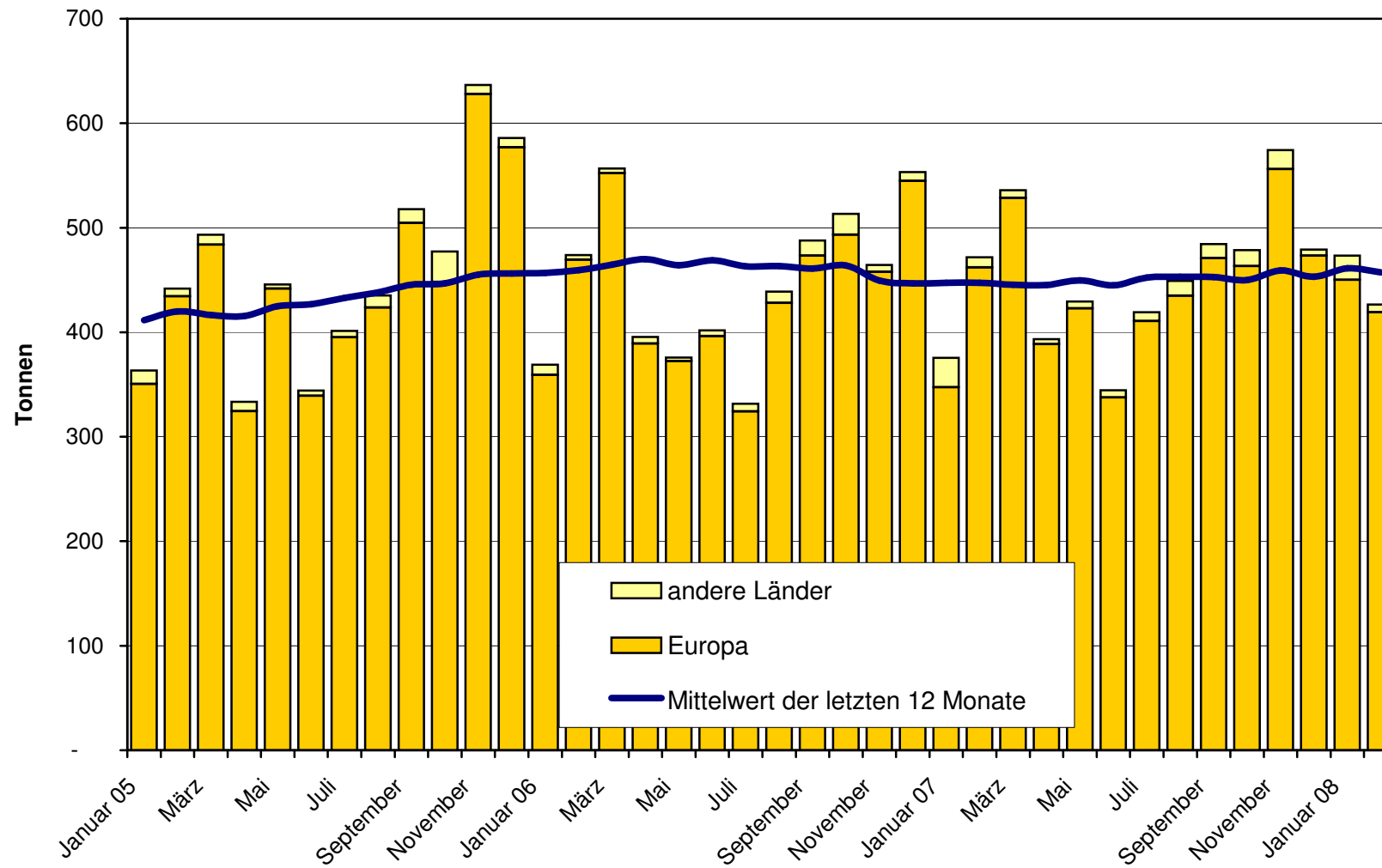
Sbrinz Export ab 2005 Mittelwert der letzten 12 Monate



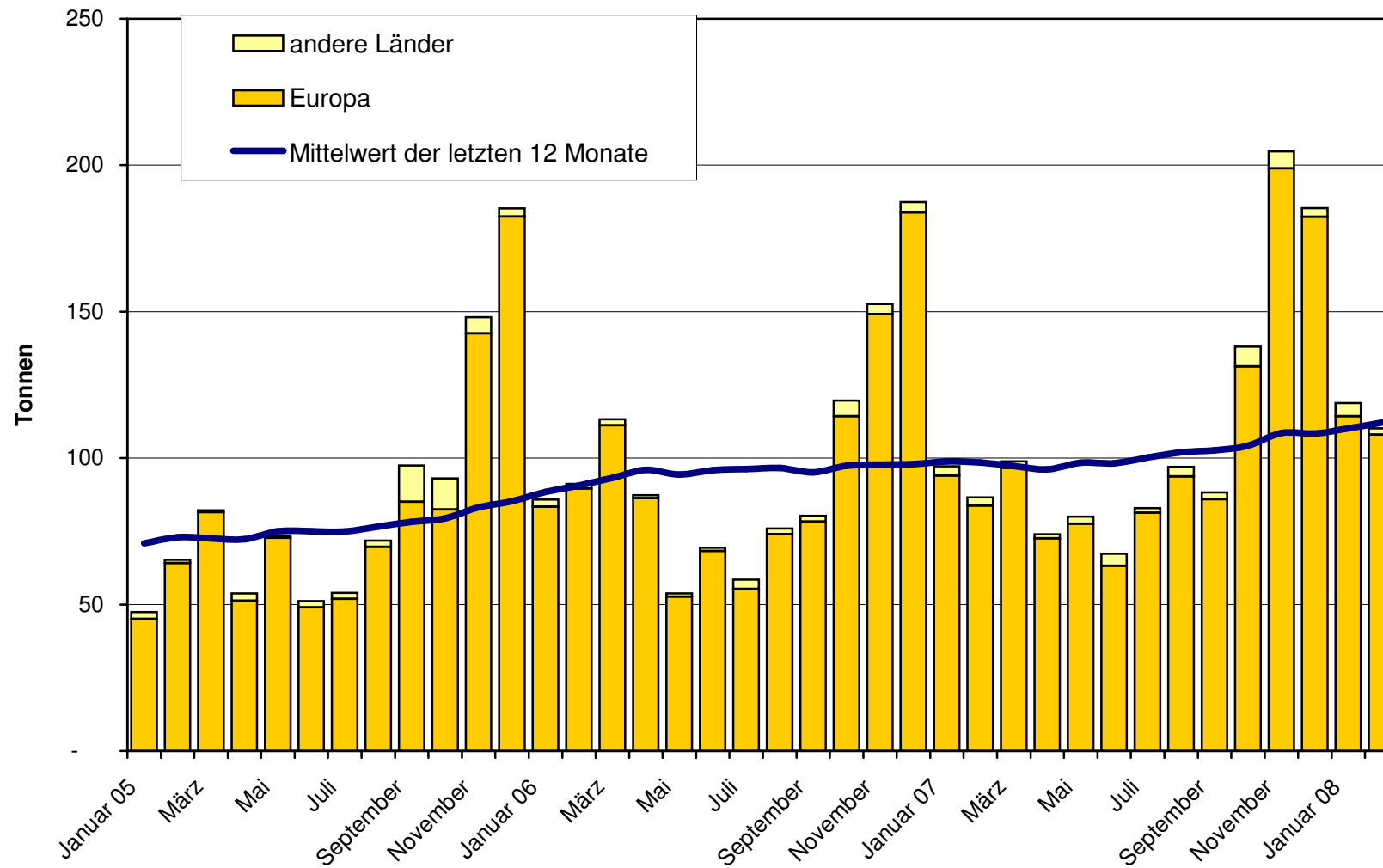
Switzerland Swiss Export ab 2005



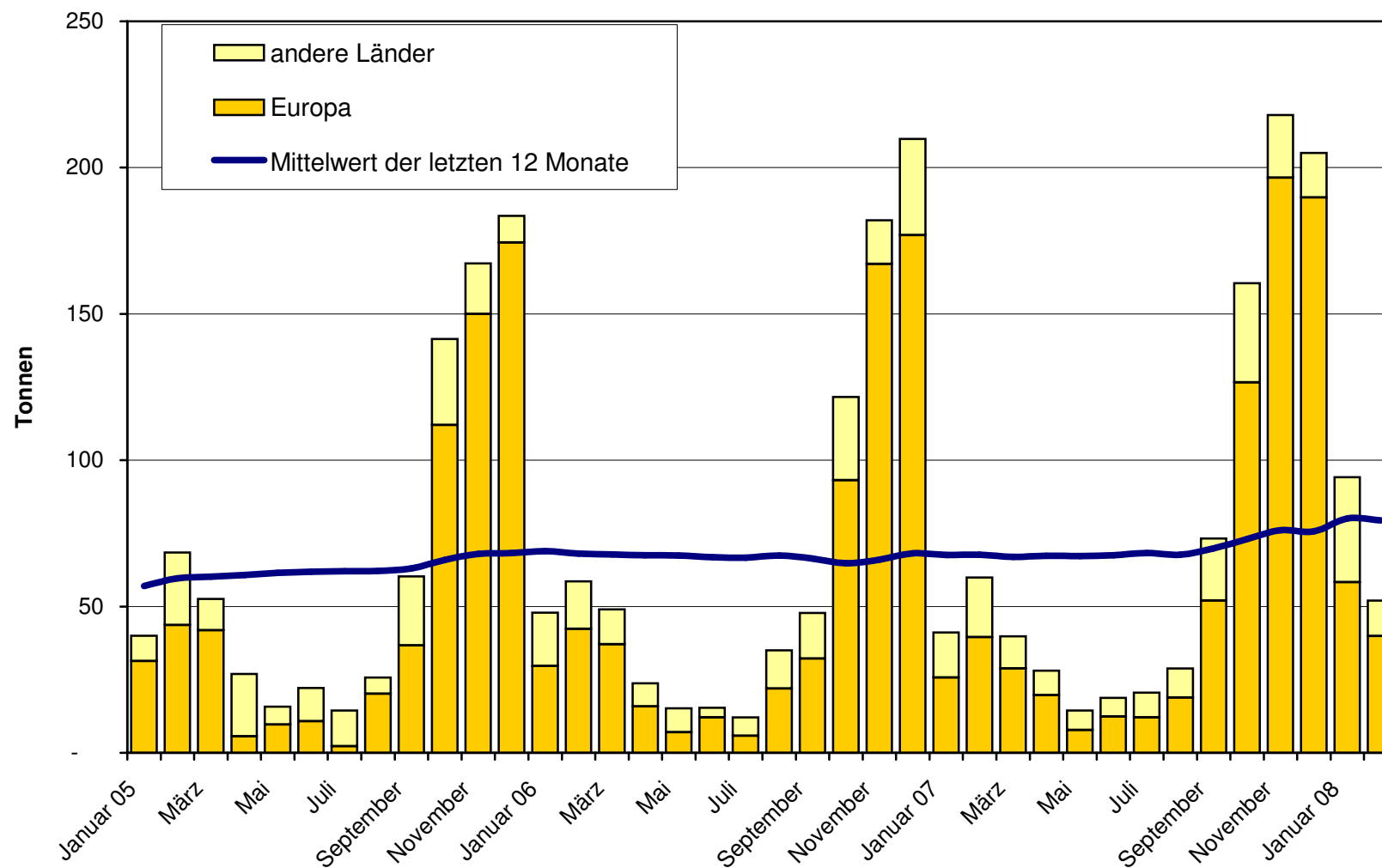
Appenzeller Käse Export ab 2005 Mittelwert der letzten 12 Monate



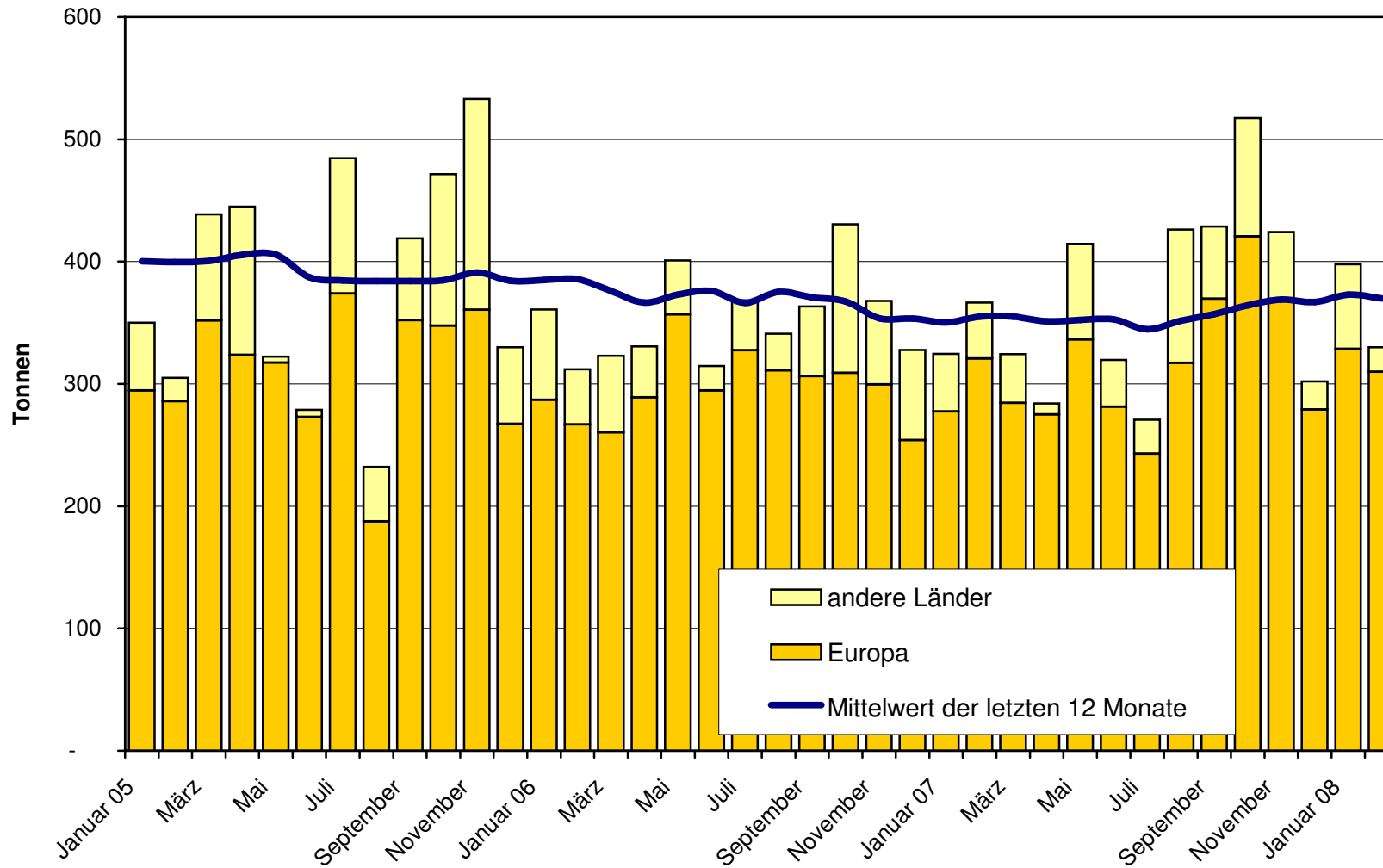
Tête de Moine Export ab 2005 Mittelwert der letzten 12 Monate

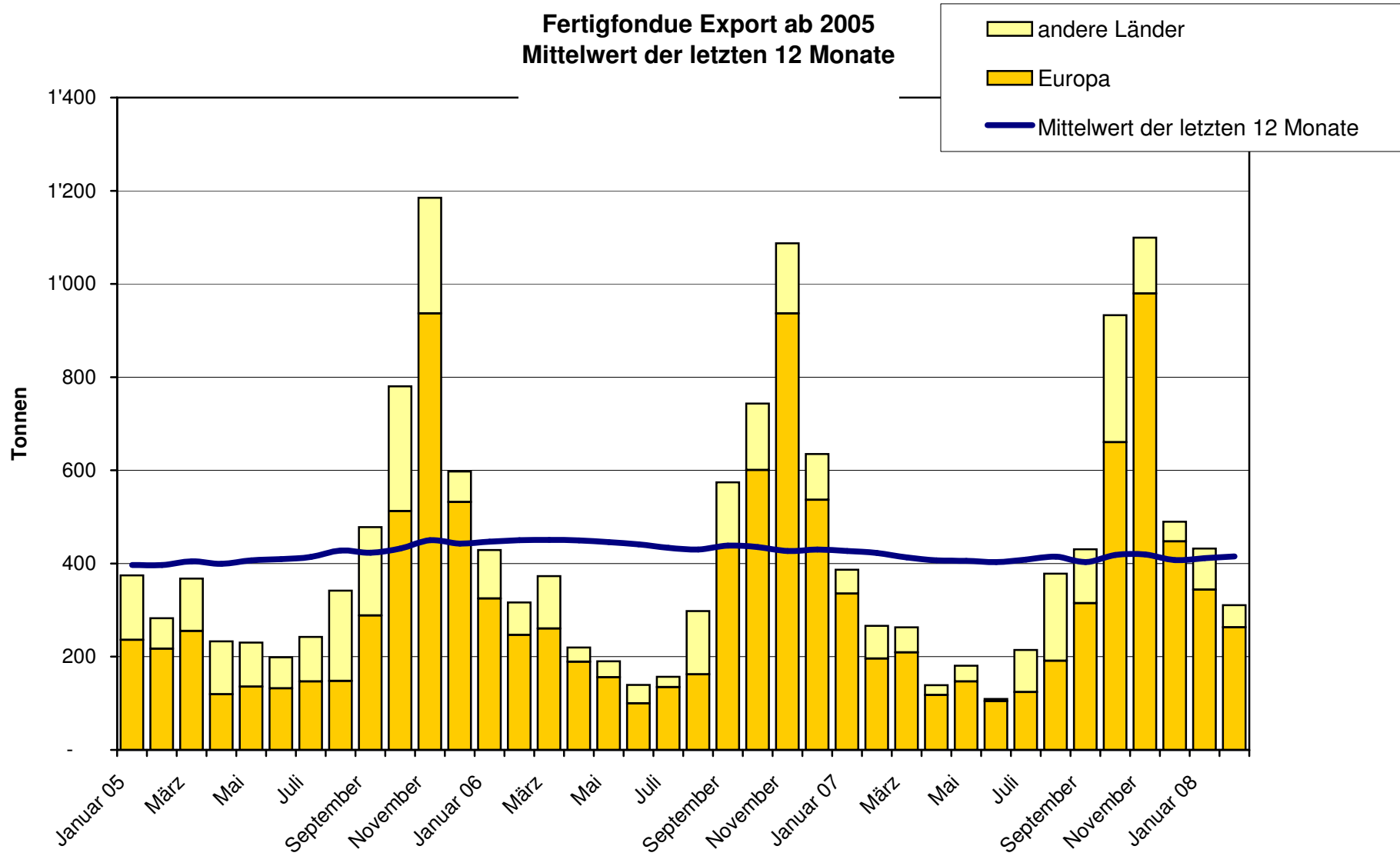


Raclette Suisse Export ab 2005 Mittelwert der letzten 12 Monate

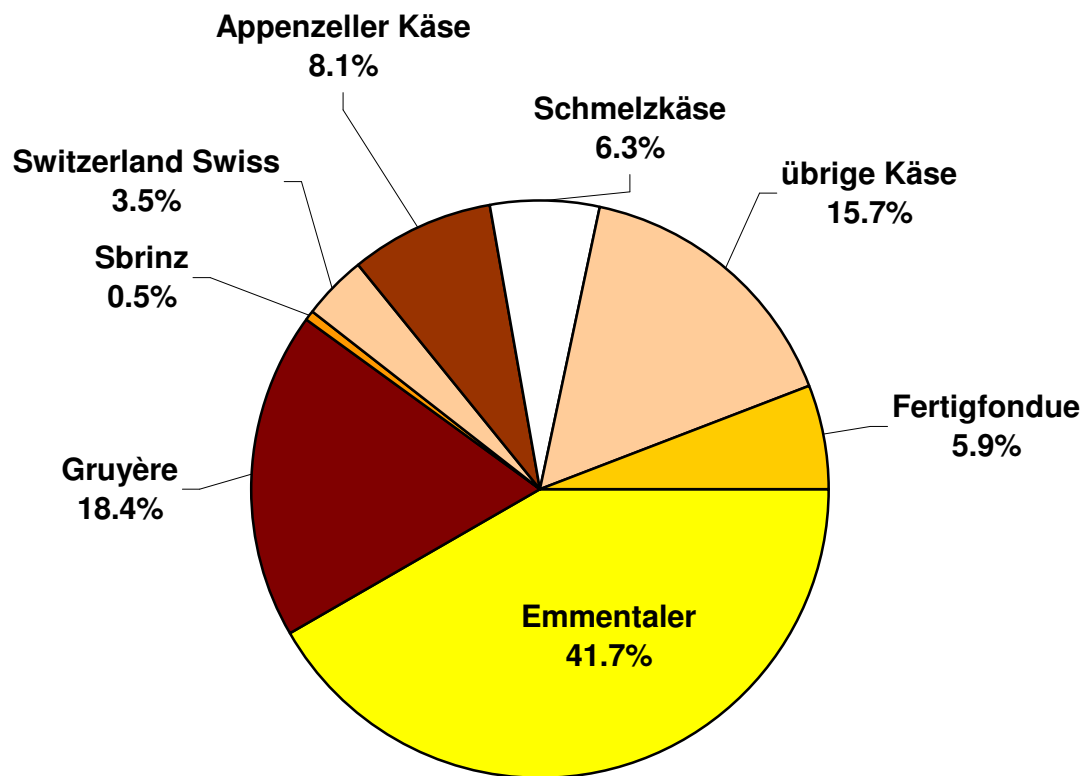


Schmelzkäse Export ab 2005 Mittelwert der letzten 12 Monate





Anteil Käseexporte je Sorte, Februar 2008 Total 5'268 Tonnen



Käseimport nach Produkten/Gruppen

| Käsesorte / Kategorie | Monatliche Importe | | Differenz zum Vorjahres-Monat | | Kumulierte Importe | | Differenz zur Vorjahresperiode | |
|---|------------------------|------------------------|-------------------------------|--------------|-----------------------------|-----------------------------|--------------------------------|--------------|
| | Februar 2007 Tonnen | Februar 2008 Tonnen | Tonnen | (%) | Jan. - Febr. 2007 Tonnen | Jan. - Febr. 2008 Tonnen | Tonnen | (%) |
| Mascarpone, Ricotta Romana | 72.0 | 80.1 | 8.1 | 11.2 | 150.8 | 160.8 | 9.9 | 6.6 |
| Mozzarella | 125.4 | 166.4 | 41.0 | 32.7 | 299.9 | 314.6 | 14.7 | 4.9 |
| Frischkäse, andere | 458.2 | 712.7 | 254.5 | 55.6 | 999.7 | 1'461.9 | 462.3 | 46.2 |
| Frischkäse total | 655.6 | 959.2 | 303.6 | 46.3 | 1'450.4 | 1'937.3 | 486.9 | 33.6 |
| Danablu, Gorgonzola, Roquefort | 19.2 | 17.8 | -1.4 | -7.3 | 38.7 | 34.0 | -4.8 | -12.3 |
| Weissschimmelkäse | 147.8 | 169.3 | 21.5 | 14.5 | 298.9 | 334.2 | 35.3 | 11.8 |
| Blau-, Grünschimmelkäse | | | | | | | | |
| Brie, Camembert, Italice | 121.9 | 112.2 | -9.8 | -8.0 | 239.7 | 226.5 | -13.2 | -5.5 |
| Weichkäse, andere | 327.9 | 426.5 | 98.7 | 30.1 | 655.7 | 906.5 | 250.8 | 38.3 |
| Weichkäse total | 616.8 | 725.8 | 108.9 | 17.7 | 1'233.1 | 1'501.2 | 268.2 | 21.7 |
| Halbhartkäse mit Schimmelbildung | 3.5 | 4.3 | 0.8 | 23.5 | 6.1 | 8.1 | 2.0 | 33.1 |
| Caciocavallo, Fontina, Brà, u.a. | 81.2 | 59.3 | -21.9 | -27.0 | 158.6 | 126.0 | -32.7 | -20.6 |
| Tilsiter | 2.6 | 21.6 | 19.0 | 744.1 | 6.1 | 43.8 | 37.7 | 617.0 |
| Halbhartkäse, andere | 393.5 | 505.7 | 112.2 | 28.5 | 782.4 | 977.0 | 194.6 | 24.9 |
| Halbhartkäse, gerieben, pulverisiert | 1.1 | 0.0 | -1.1 | -99.3 | 2.2 | 0.0 | -2.2 | -99.6 |
| Halbhartkäse total | 481.8 | 590.8 | 109.0 | 22.6 | 955.4 | 1'154.8 | 199.4 | 20.9 |
| Kräuterkäse (Schabziger) | 0.0 | 0.1 | 0.1 | | 0.0 | 0.2 | 0.2 | |
| Hartkäse mit Schimmelbildung | 0.0 | 0.4 | 0.4 | 5'300.0 | 0.0 | 0.8 | 0.7 | 9'350.0 |
| Caciocavallo, Fontina, Brà, u.a. | 20.4 | 11.9 | -8.5 | -41.8 | 33.7 | 37.0 | 3.3 | 9.9 |
| Emmentaler | 8.0 | 19.0 | 11.0 | 138.0 | 23.6 | 42.2 | 18.5 | 78.5 |
| Hartkäse, andere | 170.6 | 230.0 | 59.4 | 34.8 | 310.5 | 440.9 | 130.4 | 42.0 |
| Hartkäse, gerieben, pulverisiert | 27.7 | 22.7 | -5.0 | -18.1 | 54.4 | 57.0 | 2.6 | 4.8 |
| Hartkäse total | 226.6 | 284.1 | 57.4 | 25.3 | 422.1 | 578.1 | 155.9 | 36.9 |
| Grana/Parmiggiano | 405.4 | 429.7 | 24.3 | 6.0 | 795.6 | 822.2 | 26.6 | 3.3 |
| Extra Hartkäse total | 405.4 | 429.7 | 24.3 | 6.0 | 795.6 | 822.2 | 26.6 | 3.3 |
| Total aller Sorten exkl. Schmelzkäse | 2'386.3 | 2'989.5 | 603.2 | 25.3 | 4'856.6 | 5'993.6 | 1'137.0 | 23.4 |
| Schmelzkäse total | 194.1 | 155.2 | -38.9 | -20.0 | 391.0 | 299.7 | -91.2 | -23.3 |

Quelle: OZD

Käseimport nach Ländern

Februar 2008

| | Mascarpone, Ricotta Romana | | Mozzarella | | Andere Frischkäse | | TOTAL Frischkäse | | Danablu, Gorgonzola, Roquefort | | Andere Weichkäse | | TOTAL Weichkäse | | Kräuterkäse | | Hart- und Halbhartkäse | | Übrige Käse | | TOTAL |
|----------------------------|----------------------------|--------|------------|--------|-------------------|--------|------------------|--------|--------------------------------|--------|------------------|--------|-----------------|--------|-------------|--------|------------------------|--------|-------------|--------|--------|
| Land | Tonnen | Tonnen | Tonnen | Tonnen | Tonnen | Tonnen | Tonnen | Tonnen | Tonnen | Tonnen | Tonnen | Tonnen | Tonnen | Tonnen | Tonnen | Tonnen | Tonnen | Tonnen | Tonnen | Tonnen | Tonnen |
| EUROPA | | | | | | | | | | | | | | | | | | | | | |
| Deutschland | 2.5 | 18.2 | 212.7 | 233.3 | 1.5 | | 129.3 | 130.8 | 0.1 | 129.7 | 9.4 | | | | | | | | | | 503.4 |
| Frankreich | | | 216.4 | 216.4 | 10.3 | 101.5 | 281.1 | 392.8 | | 236.3 | 78.4 | | | | | | | | | | 923.8 |
| Italien | 77.6 | 148.0 | 203.9 | 429.5 | 6.0 | | 164.8 | 170.8 | 0.0 | 709.1 | 36.8 | | | | | | | | | | 1346.2 |
| Niederlande | | | 0.11 | 0.1 | | | | 0.0 | | 84.1 | | | | | | | | | | | 84.2 |
| Belgien | | | | 0.0 | | | | 0.0 | | | | | | | | | | | | | 0.0 |
| Luxemburg | | | | 0.0 | | | | 0.0 | | | | | | | | | | | | | 0.0 |
| Oesterreich | | 0.257 | 10.9 | 11.1 | | | 2.7 | 2.7 | | 36.7 | 30.6 | | | | | | | | | | 81.1 |
| Grossbritannien | | | | 0.0 | | | | 0.0 | | 10.7 | | | | | | | | | | | 10.7 |
| Dänemark | | | 68.709 | 68.7 | | | 11.1 | 11.1 | | 12.4 | | | | | | | | | | | 92.3 |
| Norwegen | | | | 0.0 | | | | 0.0 | | | | | | | | | | | | | 0.0 |
| Schweden | | | | 0.0 | | | 0.3 | 0.3 | | 0.6 | | | | | | | | | | | 0.9 |
| Portugal | | | | 0.0 | | | 1.0 | 1.0 | | 5.9 | | | | | | | | | | | 7.0 |
| Spanien | | | | 0.0 | | | 0.8 | 0.8 | | 19.4 | | | | | | | | | | | 20.1 |
| Griechenland | | | 0.006 | 0.0 | | | 15.4 | 15.4 | | 0.4 | | | | | | | | | | | 15.8 |
| Europa übrige | | | | 0.0 | | | | 0.0 | | 59.2 | | | | | | | | | | | 59.2 |
| TOTAL EUROPA | 80.1 | 166.4 | 712.7 | 959.2 | 17.8 | 101.5 | 606.5 | 725.8 | 0.1 | 1304.4 | 155.2 | | | | | | | | | | 3144.7 |
| Andere Länder | | | | | | | | | | | | | | | | | | | | | 0.0 |
| Kanada | | | | 0.0 | | | | 0.0 | | | | | | | | | | | | | 0.0 |
| USA | | | | 0.0 | | | | 0.0 | | | | | | | | | | | | | 0.0 |
| Nordamerika übrige | | | | 0.0 | | | | 0.0 | | | | | | | | | | | | | 0.0 |
| Lateinamerika | | | | 0.0 | | | | 0.0 | | | | | | | | | | | | | 0.0 |
| Afrika | | | | 0.0 | | | | 0.0 | | | | | | | | | | | | | 0.0 |
| Asien | | | | 0.0 | | | | 0.0 | | | | | | | | | | | | | 0.0 |
| Australien | | | | 0.0 | | | | 0.0 | | | | | | | | | | | | | 0.0 |
| TOTAL ANDERE LÄNDER | 0.0 | 0.0 | 0.0 | 0.0 | 0.0 | 0.0 | 0.0 | 0.0 | 0.0 | 0.0 | 0.0 | | | | | | | | | | 0.0 |
| TOTAL | 80.1 | 166.4 | 712.7 | 959.2 | 17.8 | 101.5 | 606.5 | 725.8 | 0.1 | 1304.4 | 155.2 | | | | | | | | | | 3144.7 |

Quelle: OZD

Käseimport nach Ländern

Februar 2007

| Land | Käseimport nach Ländern | | | | | | | | | | | | TOTAL |
|----------------------------|----------------------------|------------|-------------------|------------------|--------------------------------|----------------------------|------------------|-----------------|-------------|------------------------|-------------|--|---------|
| | Mascarpone, Ricotta Romana | Mozzarella | Andere Frischkäse | TOTAL Frischkäse | Danablu, Gorgonzola, Roquefort | Brie, Camembert, Reblochon | Andere Weichkäse | TOTAL Weichkäse | Kräuterkäse | Hart- und Halbhartkäse | Übrige Käse | | |
| EUROPA | | | | | | | | | | | | | |
| Deutschland | | 17.5 | 67.2 | 84.7 | 2.0 | | 79.1 | 81.2 | | 59.0 | 65.8 | | 290.6 |
| Frankreich | | 0.2 | 158.4 | 158.6 | 9.4 | 103.7 | 235.3 | 348.3 | | 249.3 | 69.8 | | 825.9 |
| Italien | 71.2 | 106.7 | 168.7 | 346.5 | 7.3 | | 127.9 | 135.1 | | 646.1 | 34.0 | | 1'161.8 |
| Niederlande | | | 0.8 | 0.8 | | | 5.1 | 5.1 | | 79.1 | 0.7 | | 85.7 |
| Belgien | | | | 0.0 | | | | 0.0 | | | | | - |
| Luxemburg | | | | 0.0 | | | | 0.0 | | | | | - |
| Oesterreich | | 1.0 | 0.0 | 1.1 | | | 0.4 | 0.4 | | 24.7 | 23.7 | | 49.9 |
| Grossbritannien | | | | 0.0 | | | | 0.0 | | 8.4 | | | 8.4 |
| Dänemark | | | 63.9 | 63.9 | 0.5 | | 10.2 | 10.8 | | 20.4 | | | 95.0 |
| Norwegen | | | | 0.0 | | | | 0.0 | | | | | - |
| Schweden | | | | 0.0 | | | | 0.0 | | 0.8 | | | 0.8 |
| Portugal | | | | 0.0 | | | 0.8 | 0.8 | | 5.9 | | | 6.7 |
| Spanien | | | | 0.0 | | | 0.7 | 0.7 | | 20.3 | | | 21.1 |
| Griechenland | | | 0.0 | 0.0 | | | 15.3 | 15.3 | | 0.0 | | | 15.3 |
| Europa übrige | | | | 0.0 | | | | 0.0 | | | | | - |
| TOTAL EUROPA | 71.2 | 125.4 | 459.0 | 655.5 | 19.2 | 103.7 | 474.8 | 597.7 | 0.0 | 1113.9 | 194.1 | | 2'561.1 |
| Andere Länder | | | | | | | | | | | | | - |
| Kanada | | | | 0.0 | | | | 0.0 | | | | | - |
| USA | | | | 0.0 | | | | 0.0 | | | | | - |
| Nordamerika übrige | | | | 0.0 | | | | 0.0 | | | | | - |
| Lateinamerika | | | | 0.0 | | | | 0.0 | | | | | - |
| Afrika | | | | 0.0 | | | | 0.0 | | | | | - |
| Asien | | | 0.1 | 0.1 | | | | 0.0 | | | | | 0.1 |
| Australien | | | | 0.0 | | | | 0.0 | | | | | - |
| TOTAL ANDERE LÄNDER | 0.0 | 0.0 | 0.1 | 0.1 | 0.0 | 0.0 | 0.0 | 0.0 | 0.0 | 0.0 | 0.0 | | 0.1 |
| TOTAL | 71.2 | 125.4 | 459.0 | 655.6 | 19.2 | 103.7 | 474.8 | 597.7 | 0.0 | 1113.9 | 194.1 | | 2'561.2 |

Quelle: OZD

Käseimport nach Ländern, kumuliert

Januar bis Februar 2008

| | Mascarpone, Ricotta Romana | Mozzarella | Andere Frischkäse | TOTAL Frischkäse | Danablu, Gorgonzola, Roquefort | Brie, Camembert, Reblochon | Andere Weichkäse | TOTAL Weichkäse | Kräuterkäse | Hart- und Halbhartkäse | Übrige Käse | TOTAL |
|----------------------------|----------------------------|--------------|-------------------|------------------|--------------------------------|----------------------------|------------------|-----------------|-------------|------------------------|--------------|---------------|
| Land | Tonnen | Tonnen | Tonnen | Tonnen | Tonnen | Tonnen | Tonnen | Tonnen | Tonnen | Tonnen | Tonnen | |
| EUROPA | | | | | | | | | | | | |
| Deutschland | 5.9 | 36.4 | 492.0 | 534.3 | 5.5 | 0.0 | 269.3 | 274.8 | 0.1 | 248.4 | 21.2 | 1078.9 |
| Frankreich | 0.0 | 0.2 | 404.4 | 404.6 | 17.4 | 205.7 | 563.9 | 787.1 | 0.0 | 498.6 | 149.1 | 1839.3 |
| Italien | 154.9 | 277.5 | 413.0 | 845.4 | 9.8 | 0.0 | 325.7 | 335.4 | 0.1 | 1392.1 | 69.5 | 2642.5 |
| Niederlande | 0.0 | 0.0 | 0.613 | 0.6 | 0.0 | 0.0 | 2.0 | 2.0 | 0.0 | 129.2 | 0.0 | 131.8 |
| Belgien | 0.0 | 0.0 | 0.0 | 0.0 | 0.0 | 0.0 | 0.0 | 0.0 | 0.0 | 6.0 | 0.0 | 6.0 |
| Luxemburg | 0.0 | 0.0 | 0.0 | 0.0 | 0.0 | 0.0 | 0.0 | 0.0 | 0.0 | 0.0 | 0.0 | 0.0 |
| Oesterreich | 0.0 | 0.52 | 20.429 | 20.9 | 0.0 | 0.0 | 5.1 | 5.1 | 0.0 | 65.7 | 59.6 | 151.4 |
| Grossbritannien | 0.0 | 0.0 | 0.0 | 0.0 | 0.0 | 0.0 | 0.0 | 0.0 | 0.0 | 20.8 | 0.0 | 20.8 |
| Dänemark | 0.0 | 0.0 | 130.957 | 131.0 | 1.3 | 0.0 | 26.7 | 28.1 | 0.0 | 20.2 | 0.0 | 179.2 |
| Norwegen | 0.0 | 0.0 | 0.0 | 0.0 | 0.0 | 0.0 | 0.0 | 0.0 | 0.0 | 0.0 | 0.0 | 0.0 |
| Schweden | 0.0 | 0.0 | 0.0 | 0.0 | 0.0 | 0.0 | 0.3 | 0.3 | 0.0 | 2.8 | 0.3 | 3.4 |
| Portugal | 0.0 | 0.0 | 0.0 | 0.0 | 0.0 | 0.0 | 3.9 | 3.9 | 0.0 | 19.1 | 0.0 | 23.0 |
| Spanien | 0.0 | 0.0 | 0.0 | 0.0 | 0.0 | 0.0 | 0.8 | 0.8 | 0.0 | 32.7 | 0.0 | 33.4 |
| Griechenland | 0.0 | 0.0 | 0.577 | 0.6 | 0.0 | 0.0 | 50.2 | 50.2 | 0.0 | 0.6 | 0.0 | 51.3 |
| Europa übrige | 0.0 | 0.0 | 0.0 | 0.0 | 13.4 | 0.0 | 0.0 | 13.4 | 0.0 | 118.6 | 0.0 | 132.0 |
| TOTAL EUROPA | 160.8 | 314.6 | 1461.9 | 1937.3 | 47.4 | 205.7 | 1247.9 | 1501.0 | 0.2 | 2554.7 | 299.7 | 6293.1 |
| Andere Länder | 0.0 | 0.0 | 0.0 | 0.0 | 0.0 | 0.0 | 0.0 | 0.0 | 0.0 | 0.0 | 0.0 | 0.0 |
| Kanada | 0.0 | 0.0 | 0.0 | 0.0 | 0.0 | 0.0 | 0.0 | 0.0 | 0.0 | 0.0 | 0.0 | 0.0 |
| USA | 0.0 | 0.0 | 0.0 | 0.0 | 0.0 | 0.0 | 0.0 | 0.0 | 0.0 | 0.0 | 0.0 | 0.0 |
| Nordamerika übrige | 0.0 | 0.0 | 0.0 | 0.0 | 0.0 | 0.0 | 0.0 | 0.0 | 0.0 | 0.0 | 0.0 | 0.0 |
| Lateinamerika | 0.0 | 0.0 | 0.0 | 0.0 | 0.0 | 0.0 | 0.0 | 0.0 | 0.0 | 0.0 | 0.0 | 0.0 |
| Afrika | 0.0 | 0.0 | 0.0 | 0.0 | 0.0 | 0.0 | 0.0 | 0.0 | 0.0 | 0.0 | 0.0 | 0.0 |
| Asien | 0.0 | 0.0 | 0.0 | 0.0 | 0.0 | 0.0 | 0.0 | 0.0 | 0.0 | 0.0 | 0.0 | 0.0 |
| Australien | 0.0 | 0.0 | 0.0 | 0.0 | 0.0 | 0.0 | 0.0 | 0.0 | 0.0 | 0.0 | 0.0 | 0.0 |
| TOTAL ANDERE LÄNDER | 0.0 | 0.0 | 0.0 | 0.0 | 0.0 | 0.0 | 0.0 | 0.0 | 0.0 | 0.0 | 0.0 | 0.0 |
| TOTAL | 160.8 | 314.6 | 1461.9 | 1937.3 | 47.4 | 205.7 | 1247.9 | 1501.0 | 0.2 | 2554.7 | 299.7 | 6293.1 |

Quelle: OZD

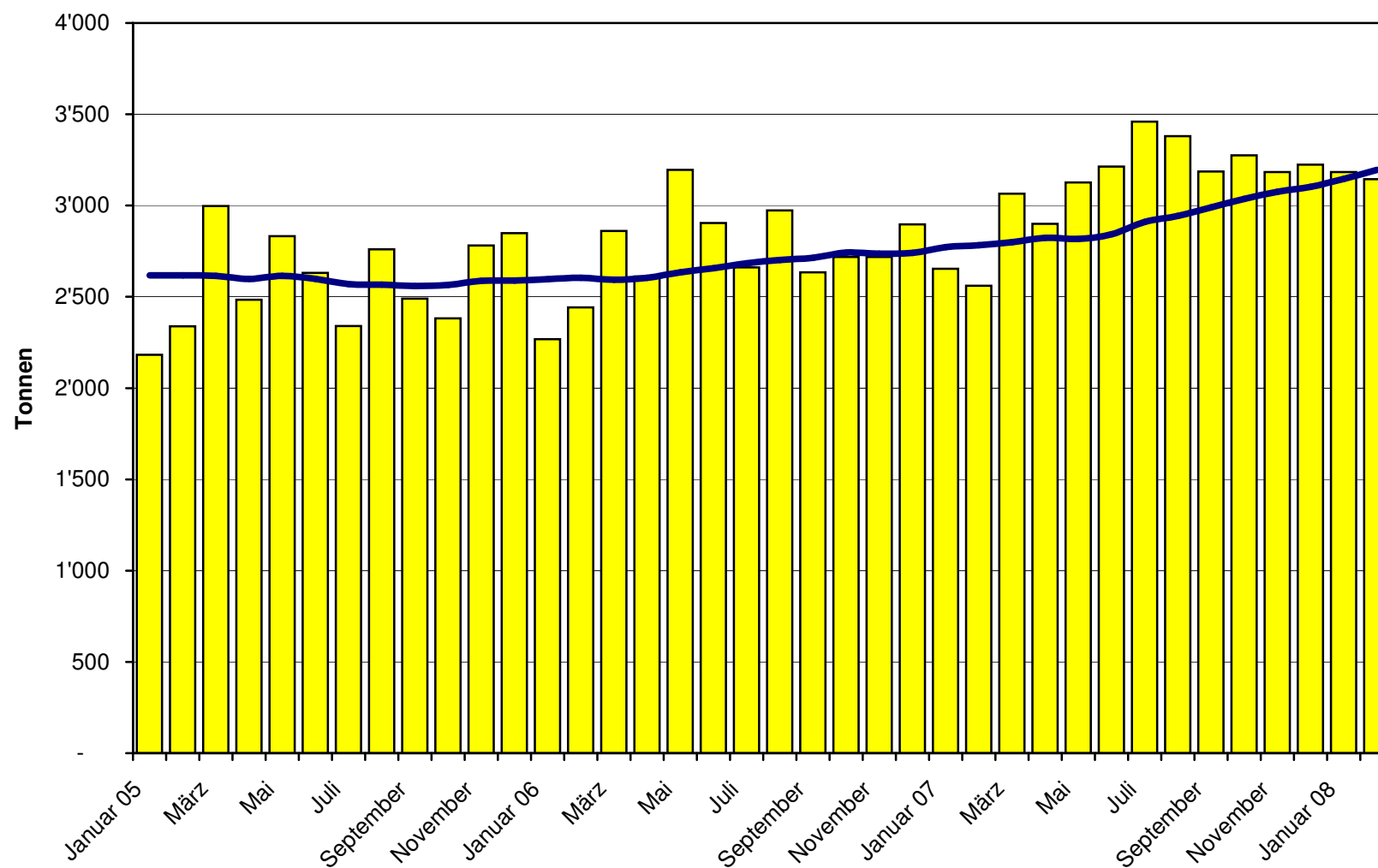
Käseimport nach Ländern, kumuliert

Januar bis Februar 2007

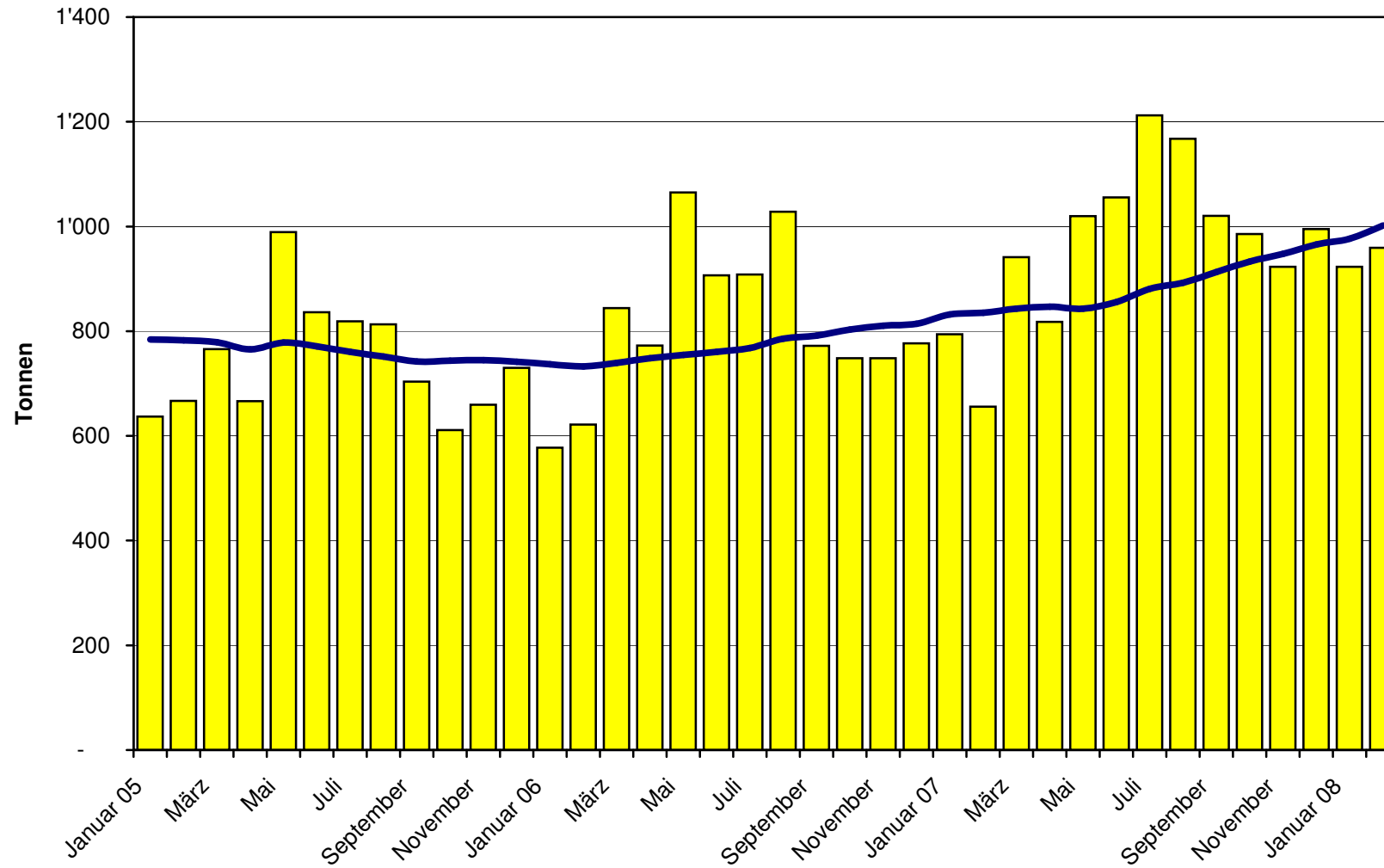
| Land | Käseimport nach Ländern, kumuliert | | | | | | | | | | | | TOTAL |
|----------------------------|------------------------------------|--------|--------|--------|--------|--------|--------|--------|--------|--------|--------|--------|---------|
| | Tonnen | Tonnen | Tonnen | Tonnen | Tonnen | Tonnen | Tonnen | Tonnen | Tonnen | Tonnen | Tonnen | Tonnen | |
| EUROPA | | | | | | | | | | | | | |
| Deutschland | 0.0 | 33.1 | 159.1 | 192.1 | 4.6 | 0.0 | 155.4 | 160.0 | 0.0 | 129.4 | 129.4 | | 610.9 |
| Frankreich | 0.0 | 0.5 | 371.1 | 371.6 | 20.5 | 210.1 | 481.7 | 712.3 | 0.0 | 510.7 | 153.1 | | 1'747.7 |
| Italien | 150.0 | 265.3 | 345.6 | 760.9 | 12.1 | 0.0 | 265.2 | 277.4 | 0.0 | 1233.5 | 60.8 | | 2'332.6 |
| Niederlande | 0.0 | 0.0 | 1.6 | 1.6 | 0.0 | 0.0 | 5.1 | 5.1 | 0.0 | 96.3 | 1.5 | | 104.4 |
| Belgien | 0.0 | 0.0 | 0.0 | 0.0 | 0.0 | 0.0 | 0.0 | 0.0 | 0.0 | 10.9 | 0.0 | | 10.9 |
| Luxemburg | 0.0 | 0.0 | 0.0 | 0.0 | 0.0 | 0.0 | 0.0 | 0.0 | 0.0 | 0.0 | 0.0 | | - |
| Oesterreich | 0.0 | 1.0 | 0.0 | 1.1 | 0.0 | 0.0 | 0.9 | 0.9 | 0.0 | 56.7 | 45.9 | | 104.5 |
| Grossbritannien | 0.0 | 0.0 | 0.0 | 0.0 | 0.0 | 0.0 | 0.0 | 0.0 | 0.0 | 16.3 | 0.0 | | 16.3 |
| Dänemark | 0.0 | 0.0 | 122.4 | 122.4 | 1.0 | 0.0 | 16.9 | 18.0 | 0.0 | 49.3 | 0.0 | | 189.6 |
| Norwegen | 0.0 | 0.0 | 0.0 | 0.0 | 0.0 | 0.0 | 0.0 | 0.0 | 0.0 | 0.0 | 0.0 | | - |
| Schweden | 0.0 | 0.0 | 0.0 | 0.0 | 0.0 | 0.0 | 0.0 | 0.0 | 0.0 | 2.3 | 0.3 | | 2.6 |
| Portugal | 0.0 | 0.0 | 0.0 | 0.0 | 0.0 | 0.0 | 1.1 | 1.1 | 0.0 | 11.5 | 0.0 | | 12.6 |
| Spanien | 0.0 | 0.0 | 0.0 | 0.0 | 0.0 | 0.0 | 0.8 | 0.8 | 0.0 | 24.6 | 0.0 | | 25.4 |
| Griechenland | 0.0 | 0.0 | 0.1 | 0.1 | 0.0 | 0.0 | 25.8 | 25.8 | 0.0 | 0.1 | 0.0 | | 25.9 |
| Europa übrige | 0.0 | 0.0 | 0.0 | 0.0 | 0.0 | 0.0 | 0.0 | 0.0 | 0.0 | 31.2 | 0.0 | | 31.2 |
| TOTAL EUROPA | 150.0 | 299.9 | 999.9 | 1449.8 | 38.2 | 210.1 | 952.9 | 1201.2 | 0.0 | 2172.7 | 390.9 | | 5'214.7 |
| Andere Länder | | | | | | | | | | | | | |
| Kanada | 0.0 | 0.0 | 0.0 | 0.0 | 0.0 | 0.0 | 0.0 | 0.0 | 0.0 | 0.0 | 0.0 | | - |
| USA | 0.0 | 0.0 | 0.0 | 0.0 | 0.0 | 0.0 | 0.0 | 0.0 | 0.0 | 0.0 | 0.0 | | - |
| Nordamerika übrige | 0.0 | 0.0 | 0.0 | 0.0 | 0.0 | 0.0 | 0.0 | 0.0 | 0.0 | 0.0 | 0.0 | | - |
| Lateinamerika | 0.0 | 0.0 | 0.0 | 0.0 | 0.0 | 0.0 | 0.0 | 0.0 | 0.0 | 0.0 | 0.0 | | - |
| Afrika | 0.0 | 0.0 | 0.0 | 0.0 | 0.0 | 0.0 | 0.0 | 0.0 | 0.0 | 0.0 | 0.0 | | - |
| Asien | 0.0 | 0.0 | 0.1 | 0.1 | 0.0 | 0.0 | 0.0 | 0.0 | 0.0 | 0.0 | 0.0 | | 0.1 |
| Australien | 0.0 | 0.0 | 0.0 | 0.0 | 0.0 | 0.0 | 0.0 | 0.0 | 0.0 | 0.0 | 0.0 | | - |
| TOTAL ANDERE LÄNDER | 0.0 | 0.0 | 0.1 | 0.1 | 0.0 | 0.0 | 0.0 | 0.0 | 0.0 | 0.0 | 0.0 | | 0.1 |
| TOTAL | 150.0 | 299.9 | 1000.0 | 1449.8 | 38.2 | 210.1 | 952.9 | 1201.2 | 0.0 | 2172.7 | 390.9 | | 5'214.7 |

Quelle: OZD

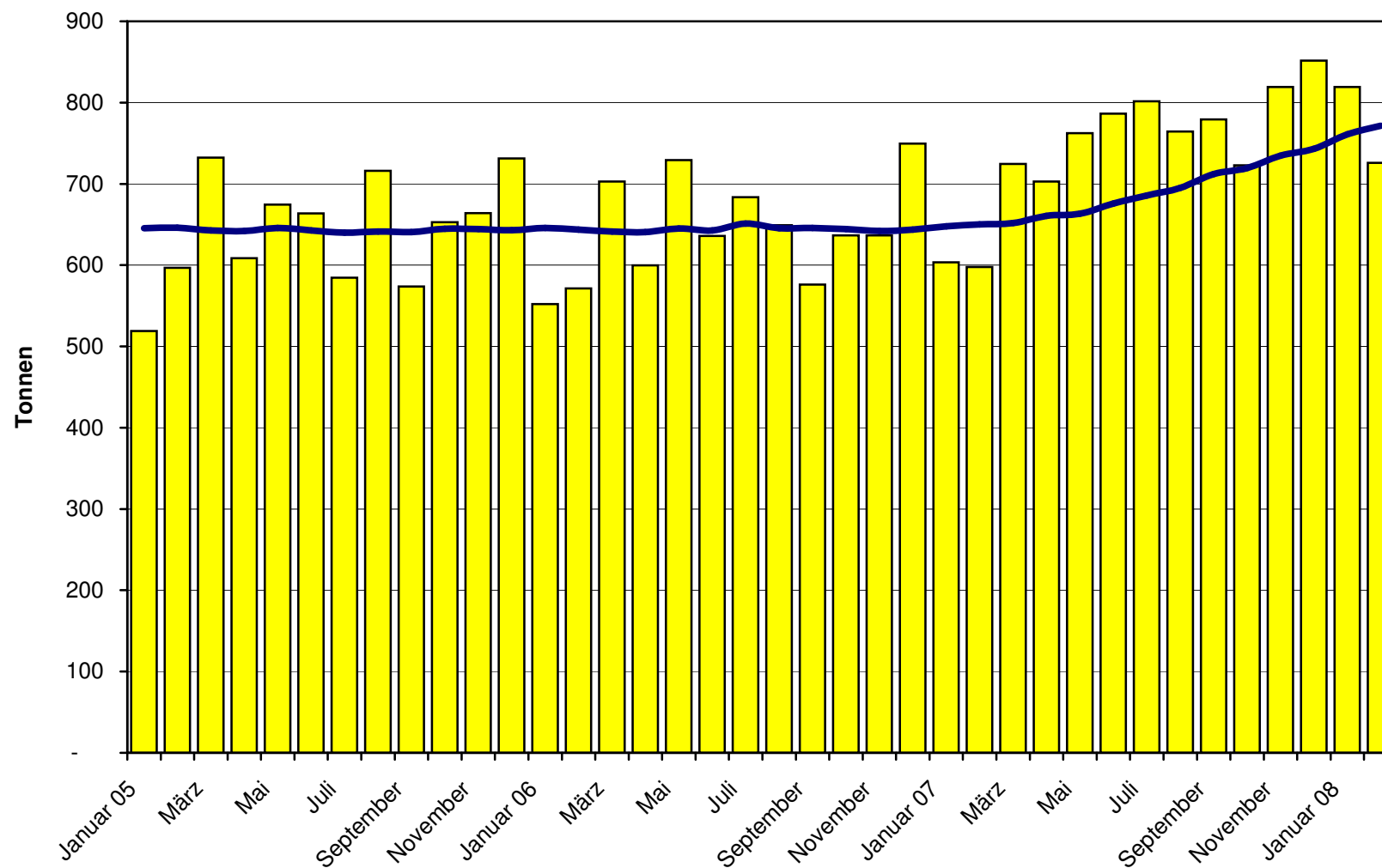
Total Käseimport ab 2005 Mittelwert der letzten 12 Monate



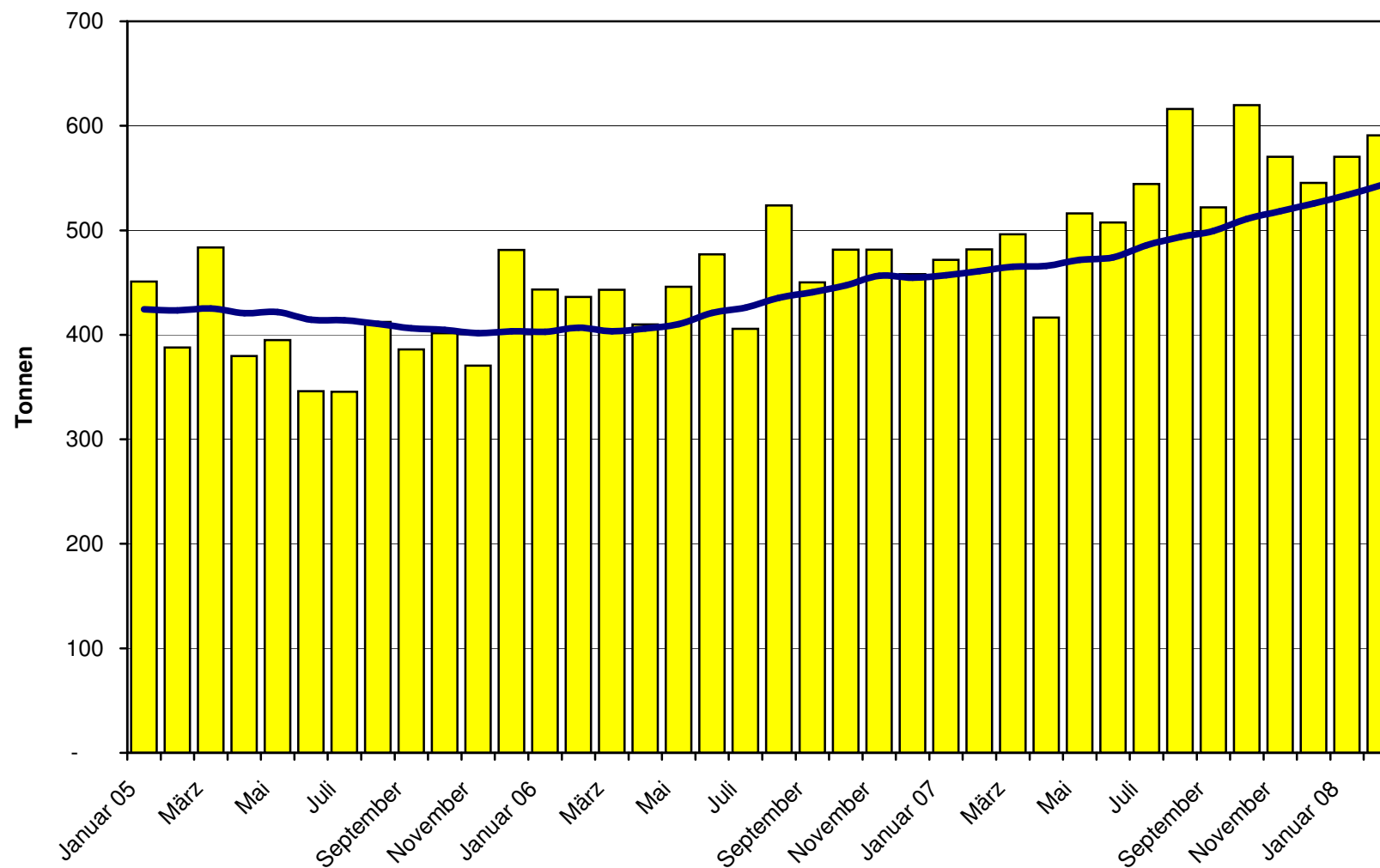
Frischkäse Import ab 2005 Mittelwert der letzten 12 Monate



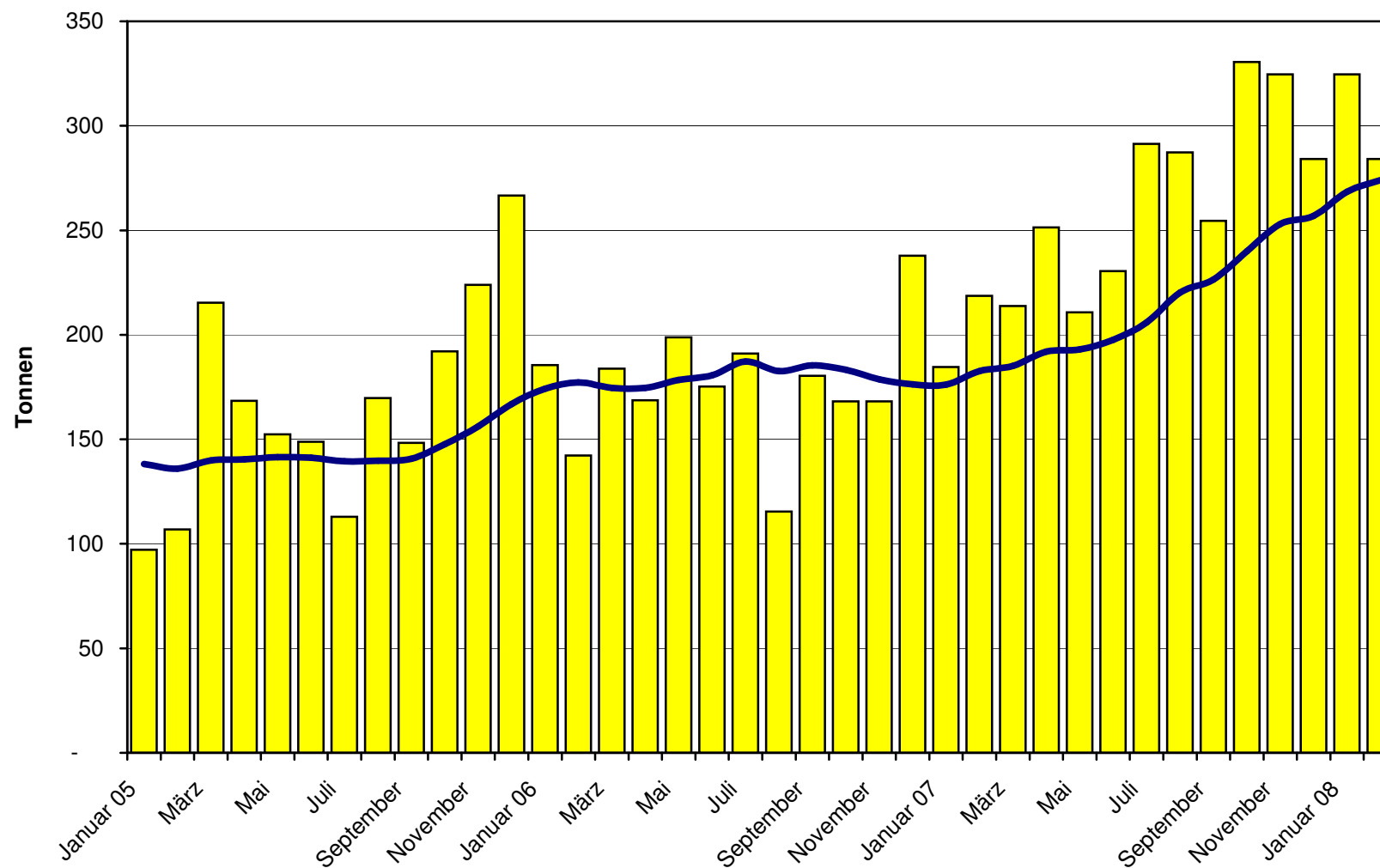
Weichkäse Import ab 2005 Mittelwert der letzten 12 Monate



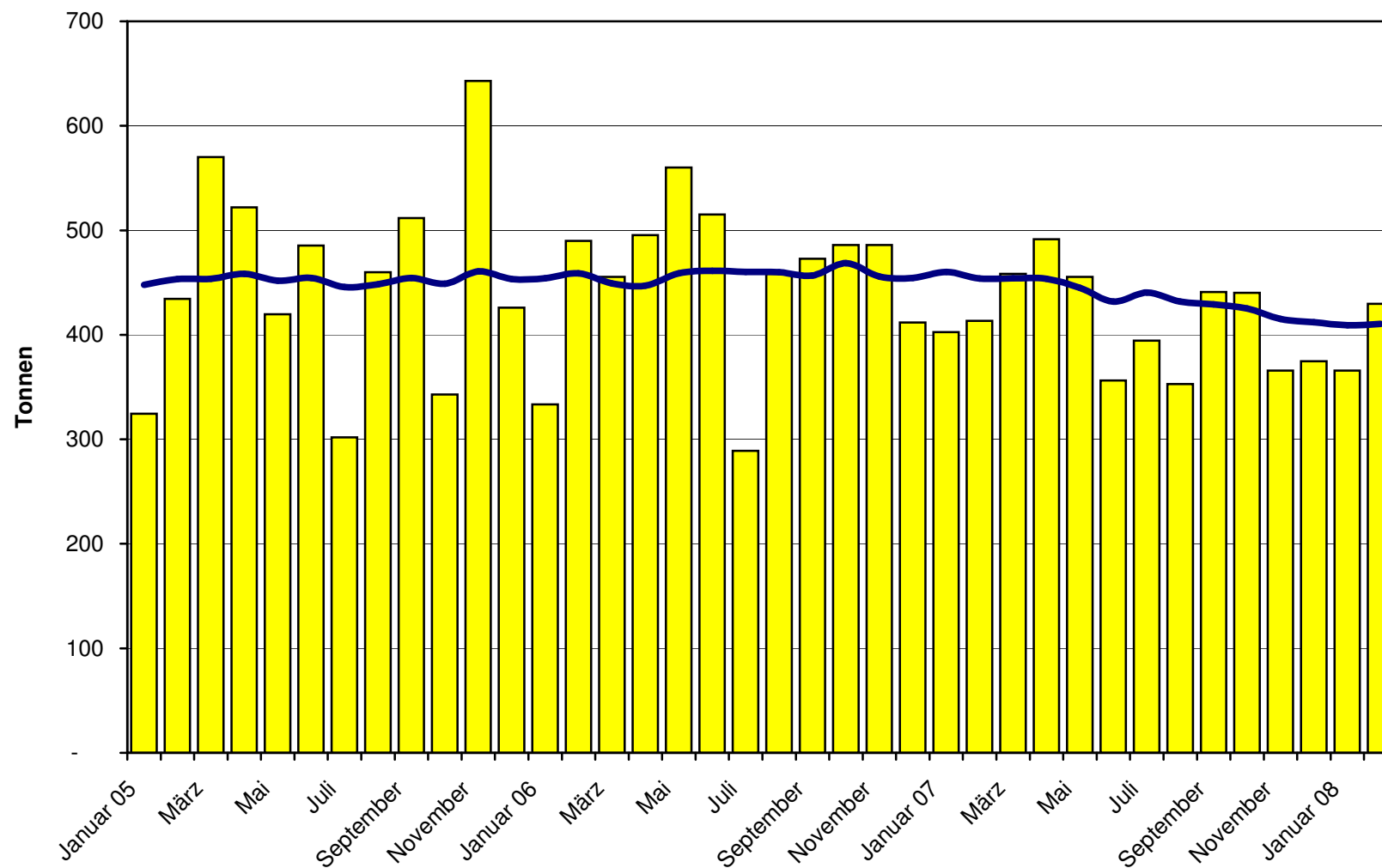
Halbhartkäse Import ab 2005 Mittelwert der letzten 12 Monate



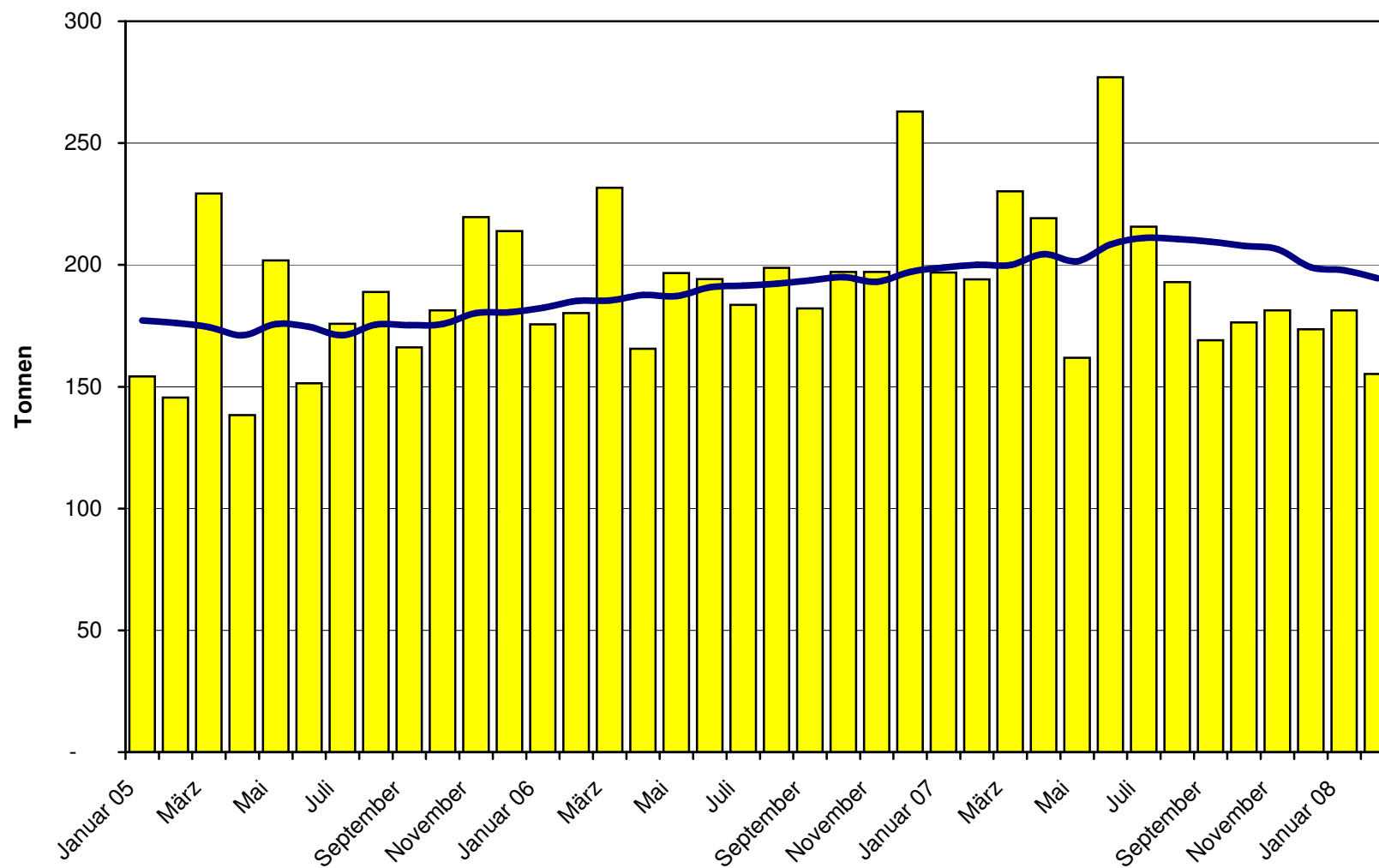
Hartkäse Import ab 2005 Mittelwert der letzten 12 Monate



Extrahartkäse Import ab 2005 Mittelwert der letzten 12 Monate



Schmelzkäse Import ab 2005 Mittelwert der letzten 12 Monate



Käseimporte nach Ländern, Februar 2008 Total 3'145 Tonnen

