

Monatsstatistik Milchmarkt

September 2009

Bern, 12. November 2009

1 - Milchproduktion / Milchverwertung

- 01 Monatliche Milchproduktion
- 10 Milchverwertung nach Milchäquivalent
- 11 Milchverwertung nach Milchäquivalent (Grafik)
- 14.1+14.2 Milchgehaltswerte nach Kanton

2 - Hergestellte Milchprodukte

- 20 Käseproduktion, monatlich und kumuliert 2009
- 21 Käseproduktion, monatlich und kumuliert 2008
- 22 Käseproduktion im Vergleich zum Vorjahresmonat (Grafik)
- 23 Käseproduktion kumuliert im Vergleich zur Vorjahresperiode (Grafik)
- 24 Käseproduktionanteile je Sorte, kumuliert 2009 (Grafik)
- 25 Konsummilchproduktion / Butterproduktion
- 26 Milchspezialitäten
- 27 Milchpulver und Milchcondensat

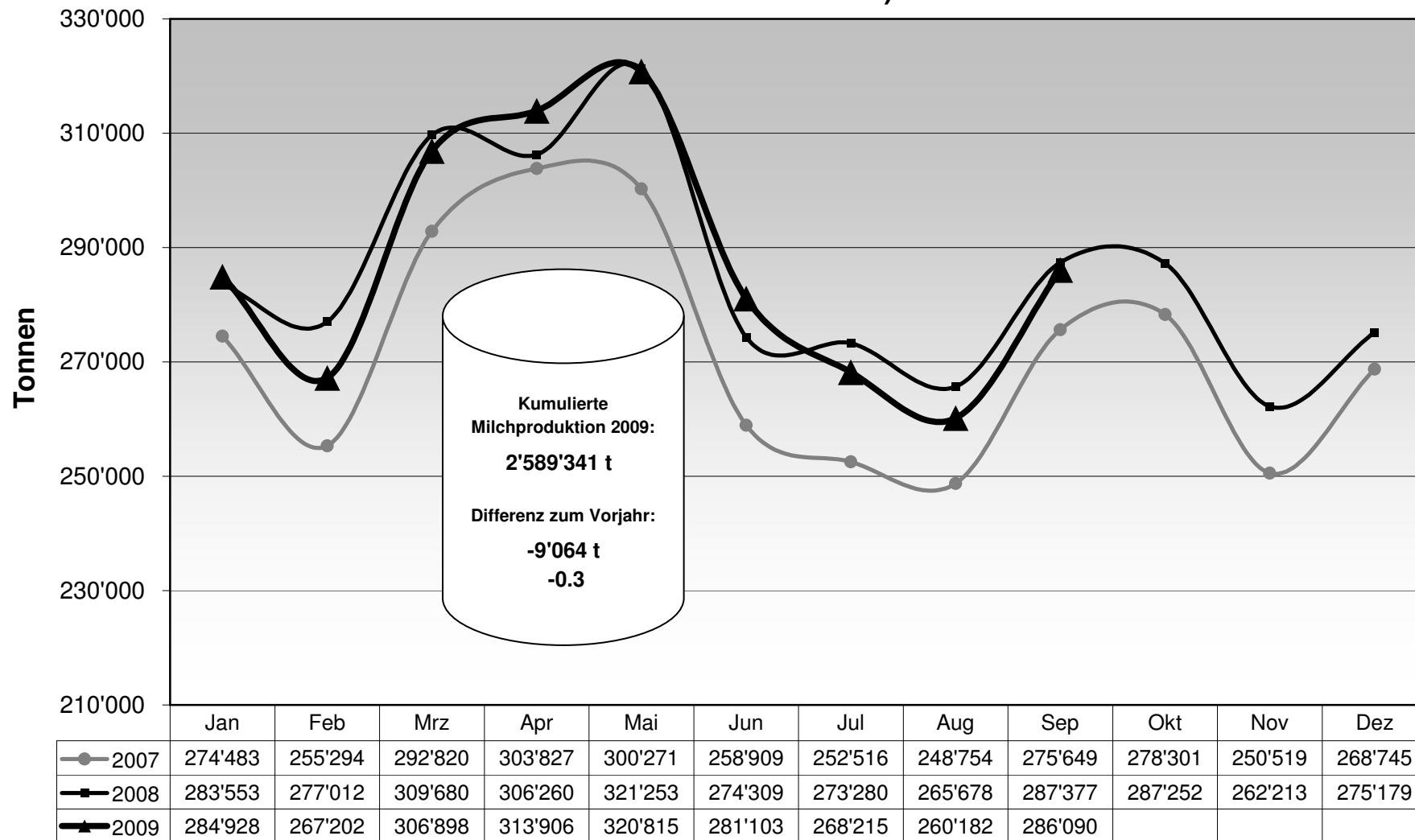
3 - Export Käse

- 30 Käseexport nach Produkten/Gruppen
- 31 Käseexport nach Ländern
- 31 Käseexport nach Ländern, Vorjahresmonat
- 32 Käseexport nach Ländern, kumuliert
- 32 Käseexport nach Ländern, kumuliert, Vorjahr
- 33-1 bis 33-10 Käseexport total / ausgewählte Sorten, ab 2006
- 34 Anteil Käseexport je Sorte (Grafik)

4 - Import Käse

- 40 Käseimport nach Produkten/Gruppen
- 41 Käseimport nach Ländern
- 41 Käseimport nach Ländern, Vorjahresmonat
- 42 Käseimport nach Ländern, kumuliert
- 42 Käseimport nach Ländern, kumuliert, Vorjahr
- 43.1 bis 43.7 Käseimport total / nach Kategorien, ab 2006
- 44 Anteil Käseimport nach Ländern (Grafik)

Monatliche Milchproduktion 2009 (inkl. Zonenmilch Genf sowie Milch aus dem Fürstentum Liechtenstein)



Milchverwertung nach Milchäquivalent

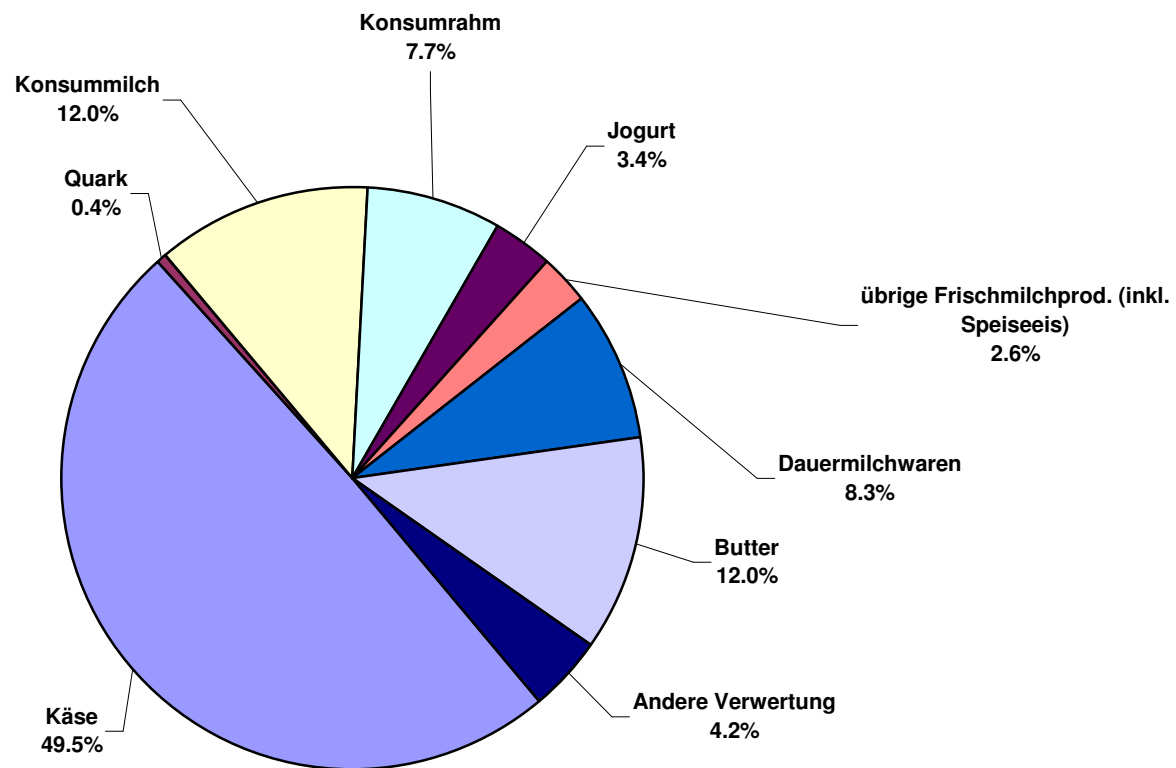
| Milchverwertung zu: | Monatliche Verwertung | | Differenz zum Vorjahres-Monat | | Kumulierte Verwertung | | Differenz zur Vorjahresperiode | |
|---|-----------------------|----------------|-------------------------------|-------------|-----------------------|------------------|--------------------------------|-------------|
| | September 2008 | September 2009 | | | Jan. - Sep. 2008 | Jan. - Sep. 2009 | | |
| | Tonnen | Tonnen | Tonnen | (%) | Tonnen | Tonnen | Tonnen | (%) |
| Käse | 142'631 | 141'522 | -1'109 | -0.8 | 1'097'504 | 1'079'798 | -17'706 | -1.6 |
| Quark | 1'347 | 1'247 | -100 | -7.4 | 12'920 | 12'819 | -101 | -0.8 |
| Konsummilch | 34'557 | 34'242 | -315 | -0.9 | 331'735 | 310'629 | -21'106 | -6.4 |
| Konsumrahm | 22'448 | 21'942 | -506 | -2.3 | 186'608 | 187'918 | 1'310 | 0.7 |
| Jogurt | 9'321 | 9'594 | 273 | 2.9 | 88'350 | 87'679 | -671 | -0.8 |
| übrige Frischmilchprod. (inkl. Speiseeis) | 9'284 | 7'424 | -1'860 | -20.0 | 82'479 | 78'320 | -4'159 | -5.0 |
| Dauermilchwaren | 24'180 | 23'699 | -481 | -2.0 | 274'682 | 290'586 | 15'904 | 5.8 |
| Butter | 35'853 | 34'279 | -1'574 | -4.4 | 425'606 | 442'979 | 17'373 | 4.1 |
| Andere Verwertung | 7'756 | 12'141 | 4'385 | 56.5 | 98'521 | 98'613 | 92 | 0.1 |
| Total Milchverwertung | 287'377 | 286'090 | -1'287 | -0.4 | 2'598'405 | 2'589'341 | -9'064 | -0.3 |

Ein Milchäquivalent entspricht den Inhaltsstoffen von Eiweiss und Fett eines Kilogramms Milch (Anteil Eiweiss = 0.45 Äquivalent und Anteil Fett = 0.55 Äquivalent)

- Beispiele: 1 kg Vollmilch Past/UHT = 0.45 Eiweiss + 0.55 Fett = 1.00 Milchäquivalent
 1 kg Magermilch Past/UHT = 0.45 Eiweiss + 0.05 Fett = 0.50 Milchäquivalent
 1 kg Vollrahm Past/UHT = 0.30 Eiweiss + 4.80 Fett = 5.10 Milchäquivalent

Milchverwertung nach Milchäquivalent September 2009

Total 286'090 Tonnen



Milchgehaltswerte nach Kanton 2009 (Seite 1 / Aargau bis Nidwalden)

| Kanton | Inhaltsstoffe | Jan. g/kg | Feb. g/kg | März g/kg | April g/kg | Mai g/kg | Juni g/kg | Juli g/kg | Aug. g/kg | Sept. g/kg | Okt. g/kg | Nov. g/kg | Dez. g/kg | Durchschnitt 2009 g/kg |
|------------------------|---------------|--------------|--------------|--------------|---------------|-------------|--------------|--------------|--------------|---------------|--------------|--------------|--------------|---------------------------|
| Aargau | Fett | 43.5 | 42.9 | 42.4 | 41.4 | 40.4 | 40.3 | 40.6 | 40.0 | 41.2 | | | | 41.4 |
| | Eiweiss | 34.0 | 33.4 | 32.8 | 32.8 | 32.4 | 31.9 | 31.6 | 31.9 | 32.9 | | | | 32.6 |
| | Total | 77.5 | 76.3 | 75.2 | 74.2 | 72.8 | 72.2 | 72.2 | 71.9 | 74.1 | 0.0 | 0.0 | 0.0 | 74.0 |
| Appenzell Innerrhoden | Fett | 43.0 | 42.8 | 42.6 | 42.2 | 41.3 | 41.4 | 41.1 | 39.9 | 40.8 | | | | 41.7 |
| | Eiweiss | 34.2 | 33.8 | 33.6 | 33.5 | 33.0 | 32.9 | 32.7 | 33.0 | 34.1 | | | | 33.4 |
| | Total | 77.2 | 76.6 | 76.2 | 75.7 | 74.3 | 74.3 | 73.8 | 72.9 | 74.9 | 0.0 | 0.0 | 0.0 | 75.1 |
| Appenzell Ausserrhoden | Fett | 42.2 | 41.6 | 41.7 | 41.3 | 40.8 | 40.8 | 40.5 | 39.6 | 40.3 | | | | 41.0 |
| | Eiweiss | 34.3 | 33.8 | 33.6 | 33.5 | 32.7 | 32.7 | 32.5 | 32.7 | 33.6 | | | | 33.3 |
| | Total | 76.5 | 75.4 | 75.3 | 74.8 | 73.5 | 73.5 | 73.0 | 72.3 | 73.9 | 0.0 | 0.0 | 0.0 | 74.2 |
| Baselland | Fett | 42.7 | 41.9 | 41.7 | 41.3 | 39.7 | 39.9 | 39.9 | 39.3 | 40.1 | | | | 40.7 |
| | Eiweiss | 33.3 | 32.4 | 31.8 | 31.8 | 31.7 | 31.5 | 31.3 | 31.6 | 32.3 | | | | 32.0 |
| | Total | 76.0 | 74.3 | 73.5 | 73.1 | 71.4 | 71.4 | 71.2 | 70.9 | 72.4 | 0.0 | 0.0 | 0.0 | 72.7 |
| Baselstadt | Fett | 39.6 | 39.0 | 41.5 | 38.7 | 37.3 | 39.3 | 40.4 | 40.1 | 40.4 | | | | 39.6 |
| | Eiweiss | 33.2 | 32.4 | 31.7 | 31.5 | 32.3 | 32.7 | 33.1 | 33.0 | 33.4 | | | | 32.6 |
| | Total | 72.8 | 71.3 | 73.2 | 70.2 | 69.6 | 72.0 | 73.5 | 73.1 | 73.8 | 0.0 | 0.0 | 0.0 | 72.2 |
| Bern | Fett | 42.6 | 42.2 | 42.0 | 41.1 | 39.8 | 39.8 | 39.8 | 39.4 | 39.6 | | | | 40.7 |
| | Eiweiss | 32.9 | 32.3 | 32.1 | 31.8 | 32.3 | 32.2 | 31.9 | 32.0 | 32.9 | | | | 32.3 |
| | Total | 75.5 | 74.5 | 74.1 | 72.9 | 72.1 | 72.0 | 71.7 | 71.4 | 72.5 | 0.0 | 0.0 | 0.0 | 73.0 |
| Freiburg | Fett | 41.2 | 41.0 | 40.9 | 39.6 | 38.2 | 38.5 | 38.7 | 38.6 | 39.0 | | | | 39.5 |
| | Eiweiss | 32.4 | 32.0 | 31.9 | 31.6 | 32.3 | 32.1 | 32.0 | 32.2 | 33.4 | | | | 32.2 |
| | Total | 73.6 | 73.0 | 72.8 | 71.2 | 70.5 | 70.6 | 70.7 | 70.8 | 72.4 | 0.0 | 0.0 | 0.0 | 71.7 |
| Genf | Fett | 42.6 | 41.8 | 41.7 | 40.3 | 37.9 | 38.4 | 37.2 | 38.3 | 38.9 | | | | 39.7 |
| | Eiweiss | 33.3 | 32.8 | 32.6 | 32.7 | 33.7 | 32.7 | 32.9 | 34.4 | 35.2 | | | | 33.4 |
| | Total | 75.9 | 74.6 | 74.3 | 72.9 | 71.6 | 71.1 | 70.1 | 72.6 | 74.1 | 0.0 | 0.0 | 0.0 | 73.0 |
| Glarus | Fett | 39.7 | 39.8 | 39.8 | 39.6 | 39.7 | 40.6 | 39.7 | 39.5 | 40.2 | | | | 39.8 |
| | Eiweiss | 32.1 | 31.7 | 31.7 | 32.0 | 32.2 | 32.5 | 32.1 | 32.4 | 33.5 | | | | 32.2 |
| | Total | 71.8 | 71.5 | 71.5 | 71.6 | 71.9 | 73.1 | 71.8 | 71.9 | 73.7 | 0.0 | 0.0 | 0.0 | 72.1 |
| Graubünden | Fett | 38.8 | 39.2 | 39.4 | 39.5 | 39.1 | 40.5 | 40.1 | 39.0 | 39.8 | | | | 39.5 |
| | Eiweiss | 31.8 | 31.9 | 32.0 | 32.4 | 32.4 | 32.9 | 32.8 | 33.0 | 33.7 | | | | 32.5 |
| | Total | 70.6 | 71.1 | 71.4 | 71.9 | 71.5 | 73.4 | 72.9 | 72.0 | 73.5 | 0.0 | 0.0 | 0.0 | 72.0 |
| Jura | Fett | 41.3 | 41.1 | 40.7 | 40.3 | 39.3 | 38.8 | 38.9 | 38.0 | 39.1 | | | | 39.7 |
| | Eiweiss | 32.6 | 32.0 | 31.8 | 31.6 | 31.9 | 31.7 | 31.5 | 31.9 | 32.8 | | | | 32.0 |
| | Total | 73.9 | 73.1 | 72.5 | 71.9 | 71.2 | 70.5 | 70.4 | 69.9 | 71.9 | 0.0 | 0.0 | 0.0 | 71.7 |
| Luzern | Fett | 42.4 | 42.2 | 42.0 | 41.3 | 40.3 | 40.8 | 40.4 | 39.8 | 40.9 | | | | 41.1 |
| | Eiweiss | 34.1 | 33.7 | 33.3 | 33.3 | 33.0 | 32.3 | 31.9 | 32.2 | 33.4 | | | | 33.0 |
| | Total | 76.5 | 75.9 | 75.3 | 74.6 | 73.3 | 73.1 | 72.3 | 72.0 | 74.3 | 0.0 | 0.0 | 0.0 | 74.1 |
| Neuenburg | Fett | 40.6 | 40.5 | 40.2 | 39.7 | 38.4 | 38.1 | 38.2 | 37.9 | 38.5 | | | | 39.1 |
| | Eiweiss | 32.5 | 31.8 | 31.7 | 31.3 | 32.4 | 32.4 | 31.9 | 31.9 | 32.9 | | | | 32.1 |
| | Total | 73.1 | 72.3 | 71.9 | 71.0 | 70.8 | 70.5 | 70.1 | 69.8 | 71.4 | 0.0 | 0.0 | 0.0 | 71.2 |
| Nidwalden | Fett | 41.4 | 41.4 | 41.1 | 41.0 | 40.3 | 41.3 | 40.3 | 40.0 | 40.8 | | | | 40.8 |
| | Eiweiss | 33.7 | 33.4 | 33.1 | 32.9 | 32.9 | 32.4 | 32.1 | 32.3 | 33.1 | | | | 32.9 |
| | Total | 75.1 | 74.8 | 74.2 | 73.9 | 73.2 | 73.7 | 72.4 | 72.3 | 73.9 | 0.0 | 0.0 | 0.0 | 73.7 |

Quelle: Suissselab AG Zollikofen / Qualitas AG Zug

Die Angaben werden aus allen Proben (automatisch und handgefasste Proben) welche im Rahmen der Qualitätskontrolle der Milch untersucht werden, ermittelt (Medianwert).

Milchgehaltswerte nach Kanton 2009 (Seite 2 / Obwalden bis Zürich)

| Kanton | Inhaltsstoffe | Jan. g/kg | Feb. g/kg | März g/kg | April g/kg | Mai g/kg | Juni g/kg | Juli g/kg | Aug. g/kg | Sept. g/kg | Okt. g/kg | Nov. g/kg | Dez. g/kg | Durchschnitt 2009 g/kg |
|------------------------|---------------|--------------|--------------|--------------|---------------|-------------|--------------|--------------|--------------|---------------|--------------|--------------|--------------|---------------------------|
| Obwalden | Fett | 42.2 | 42.1 | 41.2 | 40.9 | 40.8 | 42.0 | 41.1 | 40.3 | 41.1 | | | | 41.3 |
| | Eiweiss | 33.7 | 33.4 | 33.0 | 33.1 | 33.1 | 32.7 | 32.4 | 32.4 | 33.2 | | | | 33.0 |
| | Total | 75.9 | 75.5 | 74.2 | 74.0 | 73.9 | 74.7 | 73.5 | 72.7 | 74.3 | 0.0 | 0.0 | 0.0 | 74.3 |
| Schaffhausen | Fett | 43.2 | 42.4 | 42.2 | 41.3 | 40.4 | 40.8 | 40.6 | 39.8 | 41.3 | | | | 41.3 |
| | Eiweiss | 34.0 | 33.4 | 33.0 | 32.6 | 31.7 | 31.6 | 31.2 | 31.6 | 32.5 | | | | 32.4 |
| | Total | 77.2 | 75.8 | 75.2 | 73.9 | 72.0 | 72.4 | 71.8 | 71.4 | 73.8 | 0.0 | 0.0 | 0.0 | 73.7 |
| Schwyz | Fett | 41.6 | 41.3 | 41.3 | 40.9 | 40.4 | 40.3 | 40.1 | 39.4 | 40.4 | | | | 40.6 |
| | Eiweiss | 34.0 | 33.4 | 33.0 | 33.1 | 32.9 | 32.5 | 32.2 | 32.5 | 33.4 | | | | 33.0 |
| | Total | 75.6 | 74.7 | 74.3 | 74.0 | 73.3 | 72.8 | 72.3 | 71.9 | 73.8 | 0.0 | 0.0 | 0.0 | 73.6 |
| St. Gallen | Fett | 42.4 | 42.0 | 41.9 | 41.3 | 40.5 | 40.8 | 40.5 | 39.8 | 40.3 | | | | 41.1 |
| | Eiweiss | 34.2 | 33.8 | 33.7 | 33.4 | 32.9 | 32.7 | 32.3 | 32.6 | 33.4 | | | | 33.2 |
| | Total | 76.6 | 75.8 | 75.6 | 74.7 | 73.4 | 73.5 | 72.8 | 72.4 | 73.7 | 0.0 | 0.0 | 0.0 | 74.3 |
| Solothurn | Fett | 43.4 | 42.8 | 42.5 | 42.1 | 40.1 | 40.2 | 40.0 | 39.3 | 40.2 | | | | 41.2 |
| | Eiweiss | 33.7 | 32.9 | 32.6 | 32.4 | 32.3 | 31.7 | 31.6 | 31.8 | 32.8 | | | | 32.4 |
| | Total | 77.1 | 75.7 | 75.1 | 74.5 | 72.4 | 71.9 | 71.6 | 71.1 | 73.0 | 0.0 | 0.0 | 0.0 | 73.6 |
| Tessin | Fett | 39.9 | 39.3 | 39.3 | 38.9 | 39.1 | 40.3 | 39.9 | 39.2 | 40.1 | | | | 39.6 |
| | Eiweiss | 32.4 | 31.7 | 31.8 | 31.9 | 32.4 | 32.5 | 32.3 | 32.4 | 33.4 | | | | 32.3 |
| | Total | 72.3 | 71.0 | 71.1 | 70.8 | 71.5 | 72.8 | 72.2 | 71.6 | 73.5 | 0.0 | 0.0 | 0.0 | 71.9 |
| Thurgau | Fett | 42.8 | 42.4 | 42.2 | 40.9 | 40.2 | 40.3 | 40.6 | 39.9 | 40.3 | | | | 41.1 |
| | Eiweiss | 34.9 | 34.3 | 34.0 | 33.9 | 32.9 | 32.7 | 32.3 | 32.5 | 33.5 | | | | 33.4 |
| | Total | 77.7 | 76.7 | 76.2 | 74.8 | 73.1 | 73.0 | 72.9 | 72.4 | 73.8 | 0.0 | 0.0 | 0.0 | 74.5 |
| Uri | Fett | 41.3 | 41.5 | 42.0 | 41.3 | 40.8 | 43.7 | 40.8 | 40.6 | 40.7 | | | | 41.4 |
| | Eiweiss | 32.9 | 32.8 | 32.8 | 33.0 | 33.3 | 33.1 | 32.9 | 33.1 | 33.5 | | | | 33.0 |
| | Total | 74.2 | 74.3 | 74.8 | 74.3 | 74.1 | 76.8 | 73.7 | 73.7 | 74.2 | 0.0 | 0.0 | 0.0 | 74.5 |
| Waadt | Fett | 40.2 | 40.2 | 39.9 | 38.7 | 37.4 | 38.0 | 38.0 | 37.8 | 38.0 | | | | 38.7 |
| | Eiweiss | 32.5 | 32.1 | 31.9 | 32.1 | 32.5 | 32.4 | 32.1 | 32.3 | 33.4 | | | | 32.4 |
| | Total | 72.7 | 72.3 | 71.8 | 70.8 | 69.9 | 70.4 | 70.1 | 70.1 | 71.4 | 0.0 | 0.0 | 0.0 | 71.1 |
| Wallis | Fett | 37.8 | 38.8 | 38.3 | 37.7 | 38.6 | 39.0 | 40.4 | 40.7 | 40.1 | | | | 39.0 |
| | Eiweiss | 31.4 | 31.7 | 32.0 | 32.0 | 32.8 | 33.0 | 32.9 | 32.8 | 33.8 | | | | 32.5 |
| | Total | 69.2 | 70.5 | 70.3 | 69.7 | 71.4 | 72.0 | 73.3 | 73.5 | 73.9 | 0.0 | 0.0 | 0.0 | 71.5 |
| Zug | Fett | 42.6 | 42.2 | 41.7 | 41.1 | 40.8 | 40.4 | 40.3 | 39.4 | 40.6 | | | | 41.0 |
| | Eiweiss | 34.3 | 33.9 | 33.4 | 33.2 | 33.2 | 32.7 | 32.3 | 32.5 | 33.6 | | | | 33.2 |
| | Total | 76.9 | 76.1 | 75.1 | 74.3 | 74.0 | 73.1 | 72.6 | 71.9 | 74.2 | 0.0 | 0.0 | 0.0 | 74.2 |
| Zürich | Fett | 43.1 | 42.5 | 42.1 | 41.4 | 40.4 | 40.1 | 40.3 | 39.6 | 40.7 | | | | 41.1 |
| | Eiweiss | 34.2 | 33.6 | 33.1 | 33.1 | 32.7 | 32.3 | 32.0 | 32.3 | 33.4 | | | | 33.0 |
| | Total | 77.3 | 76.1 | 75.2 | 74.5 | 73.1 | 72.4 | 72.3 | 71.9 | 74.1 | 0.0 | 0.0 | 0.0 | 74.1 |
| Durchschnittsgehalt CH | Fett | 42.2 | 41.9 | 41.6 | 40.9 | 39.9 | 40.0 | 40.0 | 39.4 | 40.1 | | | | 40.7 |
| | Eiweiss | 33.4 | 32.9 | 32.7 | 32.6 | 32.6 | 32.3 | 32.0 | 32.2 | 33.2 | | | | 32.7 |
| | Total | 75.6 | 74.8 | 74.3 | 73.5 | 72.5 | 72.3 | 72.0 | 71.6 | 73.3 | 0.0 | 0.0 | 0.0 | 73.3 |

Quelle: Suissselab AG Zollikofen / Qualitas AG Zug

Die Angaben werden aus allen Proben (automatisch und handgefasste Proben) welche im Rahmen der Qualitätskontrolle der Milch untersucht werden, ermittelt (Medianwert).

Käseproduktion 2009 kumuliert mit Vorjahresvergleich

| | Jan. | Feb. | März | April | Mai | Juni | Juli | Aug. | Sept. | Okt. | Nov. | Dez. | Kumuliert 2008 | Kumuliert 2009 | Differenz zur Vorjahresperiode | |
|---|---------------|---------------|---------------|---------------|---------------|---------------|---------------|---------------|---------------|----------|----------|----------|----------------|----------------|--------------------------------|--------------|
| | Tonnen | Tonnen | Tonnen | Tonnen | Tonnen | Tonnen | Tonnen | Tonnen | Tonnen | Tonnen | Tonnen | Tonnen | Tonnen | Tonnen | Tonnen | Tonnen |
| Quark | 755 | 831 | 842 | 823 | 927 | 847 | 854 | 927 | 766 | 0 | 0 | 0 | 7'303 | 7'572 | 269 | 3.7 |
| Mozzarella | 1'279 | 1'160 | 1'378 | 1'526 | 1'638 | 1'660 | 1'668 | 1'523 | 1'287 | 0 | 0 | 0 | 13'004 | 13'119 | 115 | 0.9 |
| Mascarpone | 38 | 40 | 50 | 33 | 58 | 59 | 46 | 50 | 56 | 0 | 0 | 0 | 446 | 430 | -16 | -3.6 |
| Übrige Frischkäse | 1'184 | 1'266 | 1'337 | 1'482 | 1'500 | 1'481 | 1'272 | 1'348 | 1'248 | 0 | 0 | 0 | 11'658 | 12'118 | 460 | 3.9 |
| Frischkäse total | 3'255 | 3'297 | 3'608 | 3'863 | 4'123 | 4'047 | 3'840 | 3'848 | 3'356 | 0 | 0 | 0 | 32'407 | 33'237 | 830 | 2.6 |
| Weisseschimmelkäse, mager bis viertelfett | 0 | 0 | 0 | 0 | 0 | 0 | 0 | 0 | 0 | 0 | 0 | 0 | 0 | 0 | 0 | 0 |
| Weisseschimmelkäse, halb- bis vollfett | 86 | 106 | 122 | 108 | 98 | 113 | 109 | 102 | 117 | 0 | 0 | 0 | 927 | 963 | 36 | 3.9 |
| Weisseschimmelkäse, überfett | 121 | 123 | 156 | 149 | 120 | 117 | 102 | 153 | 134 | 0 | 0 | 0 | 1'175 | 1'175 | 60 | 5.4 |
| Blau-, Grünschimmelkäse | 0 | 0 | 1 | 0 | 0 | 0 | 0 | 1 | 1 | 0 | 0 | 0 | 7 | 4 | -3 | |
| Tomme | 171 | 177 | 187 | 180 | 177 | 169 | 172 | 168 | 181 | 0 | 0 | 0 | 1'746 | 1'582 | -164 | -9.4 |
| Vacherin Mont d'Or | 58 | 35 | 3 | 0 | 0 | 0 | 0 | 28 | 108 | 0 | 0 | 0 | 222 | 232 | 10 | 4.5 |
| Anderer Weichkäse mager, viertelfett | 60 | 35 | 106 | 33 | 4 | 2 | 58 | 73 | 98 | 0 | 0 | 0 | 786 | 469 | -283 | -152.2 |
| Anderer Weichkäse, halb- bis vollfett | 57 | 59 | 69 | 70 | 53 | 62 | 61 | 57 | 69 | 0 | 0 | 0 | 738 | 557 | -181 | -24.5 |
| Anderer Weichkäse, überfett | 26 | 40 | 44 | 36 | 28 | 37 | 22 | 30 | 37 | 0 | 0 | 0 | 332 | 300 | -32 | -9.6 |
| Weichkäse total | 582 | 576 | 687 | 575 | 481 | 500 | 524 | 613 | 744 | 0 | 0 | 0 | 5'270 | 5'282 | 12 | 0.2 |
| Appenzeller Käse | 461 | 554 | 584 | 660 | 724 | 789 | 827 | 857 | 839 | 0 | 0 | 0 | 6'753 | 6'295 | -458 | -6.8 |
| Tilsiter | 330 | 291 | 328 | 314 | 363 | 293 | 331 | 277 | 334 | 0 | 0 | 0 | 3'160 | 2'861 | -299 | -9.5 |
| Walliser Käse (Walliser Raclettekäse) | 207 | 198 | 222 | 227 | 216 | 121 | 63 | 36 | 215 | 0 | 0 | 0 | 1'570 | 1'505 | -65 | -4.1 |
| Schweizer Raclettekäse | 615 | 540 | 698 | 845 | 1'177 | 1'202 | 1'199 | 1'191 | 1'199 | 0 | 0 | 0 | 8'677 | 8'666 | -11 | -0.1 |
| Vacherin Fribourgeois | 137 | 85 | 84 | 103 | 136 | 191 | 245 | 257 | 342 | 0 | 0 | 0 | 1'715 | 1'580 | -135 | -7.9 |
| Tête de Moine | 201 | 142 | 150 | 152 | 183 | 136 | 197 | 216 | 238 | 0 | 0 | 0 | 1'629 | 1'615 | -14 | -0.9 |
| Jurakäse | 21 | 19 | 16 | 25 | 25 | 21 | 21 | 21 | 17 | 0 | 0 | 0 | 170 | 186 | 16 | 9.4 |
| Winzerkäse | 37 | 27 | 28 | 39 | 38 | 37 | 29 | 29 | 31 | 0 | 0 | 0 | 315 | 295 | -20 | -6.3 |
| Mutschli | 39 | 32 | 41 | 36 | 34 | 46 | 39 | 38 | 65 | 0 | 0 | 0 | 423 | 370 | -53 | -12.5 |
| Alpkäse halbhart | 0 | 2 | 0 | 0 | 1 | 14 | 25 | 23 | 1307 | 0 | 0 | 0 | 1'398 | 1'372 | -26 | -1.9 |
| Bündner Bergkäse | 89 | 86 | 87 | 85 | 80 | 63 | 37 | 17 | 19 | 0 | 0 | 0 | 637 | 563 | -74 | -11.6 |
| Berg- und Schnittkäse halbhart | 205 | 186 | 206 | 215 | 197 | 176 | 181 | 143 | 163 | 0 | 0 | 0 | 1'567 | 1'672 | 105 | 6.7 |
| St. Paulin Suisse | 40 | 57 | 57 | 53 | 62 | 55 | 59 | 40 | 57 | 0 | 0 | 0 | 559 | 480 | -79 | -14.1 |
| Schweizer Emmentaler | 33 | 16 | 32 | 10 | 46 | 32 | 32 | 23 | 21 | 0 | 0 | 0 | 300 | 245 | -55 | -18.3 |
| Kaltgereifte Käse | 2 | 0 | 3 | 0 | 1 | 0 | 0 | 2 | 0 | 0 | 0 | 0 | 15 | 8 | -7 | -46.7 |
| Halbhartkäse mit Schimmelbildung | 15 | 14 | 19 | 22 | 19 | 37 | 18 | 13 | 30 | 0 | 0 | 0 | 156 | 187 | 31 | 19.9 |
| Conveniencekäse | 113 | 104 | 78 | 72 | 214 | 213 | 235 | 156 | 135 | 0 | 0 | 0 | 1'693 | 1'320 | -373 | -22.0 |
| Schmelzrohware, vollfett | 117 | 133 | 253 | 255 | 115 | 88 | 77 | 100 | 112 | 0 | 0 | 0 | 1'249 | 1'250 | 1 | 0.1 |
| Anderer Halbhartkäse, mager bis viertelfett | 62 | 77 | 129 | 95 | 80 | 59 | 42 | 84 | 81 | 0 | 0 | 0 | 493 | 709 | 216 | 43.8 |
| Anderer Halbhartkäse, halb- bis vollfett * | 900 | 857 | 1'116 | 1'132 | 938 | 931 | 795 | 789 | 1'002 | 0 | 0 | 0 | 6'917 | 8'460 | 1'543 | 22.3 |
| Anderer Halbhartkäse, überfett | 183 | 185 | 244 | 239 | 221 | 175 | 198 | 188 | 188 | 0 | 0 | 0 | 1'803 | 1'821 | 18 | 1.0 |
| Halbhartkäse total | 3'808 | 3'607 | 4'376 | 4'579 | 4'869 | 4'679 | 4'652 | 4'499 | 6'397 | 0 | 0 | 0 | 41'202 | 41'466 | 264 | 0.6 |
| Emmentaler | 2'183 | 1'875 | 2'071 | 2'240 | 2'543 | 2'180 | 1'969 | 2'020 | 2'104 | 0 | 0 | 0 | 22'398 | 19'185 | -3'213 | -14.3 |
| Switzerland Swiss | 255 | 234 | 265 | 269 | 286 | 274 | 323 | 251 | 222 | 0 | 0 | 0 | 2'313 | 2'379 | 66 | 2.9 |
| Gruyère | 2'359 | 2'258 | 2'625 | 2'659 | 2'983 | 2'622 | 2'405 | 2'160 | 2'099 | 0 | 0 | 0 | 21'739 | 22'170 | 431 | 2.0 |
| Alpkäse hart | 0 | 0 | 0 | 0 | 45 | 129 | 134 | 186 | 983 | 0 | 0 | 0 | 1'434 | 1'477 | 43 | 3.0 |
| Anderer Hartkäse, mager bis viertelfett | 2 | 2 | 33 | 10 | 35 | 63 | 19 | 11 | 26 | 0 | 0 | 0 | 29 | 201 | 172 | 593.1 |
| Anderer Hartkäse, halb- bis vollfett ** | 759 | 686 | 802 | 948 | 892 | 695 | 648 | 545 | 549 | 0 | 0 | 0 | 6'644 | 6'524 | -120 | -1.8 |
| Anderer Hartkäse, überfett | 5 | 2 | 7 | 29 | 10 | 21 | 22 | 13 | 8 | 0 | 0 | 0 | 24 | 117 | 93 | 387.5 |
| Hartkäse total | 5'563 | 5'057 | 5'803 | 6'155 | 6'794 | 5'984 | 5'520 | 5'186 | 5'991 | 0 | 0 | 0 | 54'581 | 52'083 | -2'528 | -4.6 |
| Sbrinz | 166 | 160 | 180 | 153 | 182 | 166 | 129 | 121 | 146 | 0 | 0 | 0 | 1'600 | 1'403 | -197 | -12.3 |
| Extra Hartkäse total | 166 | 160 | 180 | 153 | 182 | 166 | 129 | 121 | 146 | 0 | 0 | 0 | 1'600 | 1'403 | -197 | -12.3 |
| Reiner Ziegenkäse | 26 | 41 | 69 | 99 | 107 | 94 | 86 | 78 | 115 | 0 | 0 | 0 | 708 | 715 | 7 | 1.0 |
| Reiner Schafkäse | 15 | 18 | 21 | 26 | 27 | 24 | 22 | 19 | 15 | 0 | 0 | 0 | 176 | 187 | 11 | 6.3 |
| Spezialprodukte total | 42 | 59 | 90 | 125 | 134 | 118 | 108 | 97 | 130 | 0 | 0 | 0 | 885 | 903 | 18 | 2.0 |
| Total alle Käsesorten | 13'417 | 12'757 | 14'743 | 15'452 | 16'584 | 15'495 | 14'774 | 14'364 | 16'765 | 0 | 0 | 0 | 135'949 | 134'351 | -1'598 | -1.2 |

* inkl. Lokalspezialitäten

** inkl. Schmelzrohware und Lokalspezialitäten

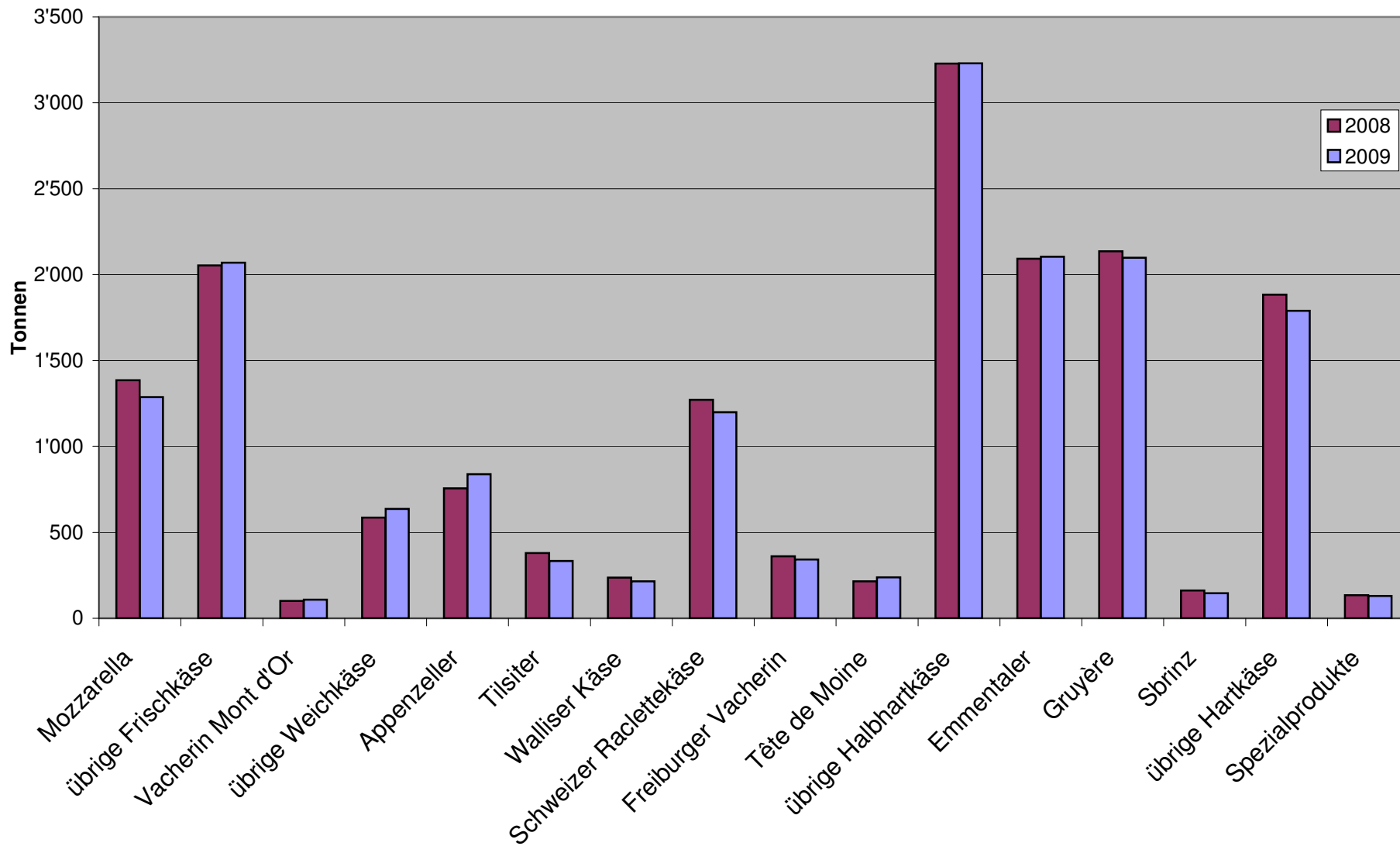
Käseproduktion 2008

| | Jan. | Feb. | März | April | Mai | Juni | Juli | Aug. | Sept. | Okt. | Nov. | Dez. | Kumuliert 2008 |
|---|---------------|---------------|---------------|---------------|---------------|---------------|---------------|---------------|---------------|---------------|---------------|---------------|----------------|
| | Tonnen | Tonnen | Tonnen | Tonnen | Tonnen | Tonnen | Tonnen | Tonnen | Tonnen | Tonnen | Tonnen | Tonnen | Tonnen |
| Quark | 746 | 758 | 896 | 754 | 946 | 799 | 801 | 824 | 779 | 735 | 718 | 877 | 9633 |
| Mozzarella | 1'337 | 1'253 | 1'512 | 1'446 | 1'459 | 1'530 | 1'600 | 1'482 | 1'385 | 1'454 | 1'251 | 1'475 | 17'184 |
| Mascarpone | 43 | 48 | 56 | 50 | 63 | 49 | 48 | 47 | 42 | 46 | 42 | 76 | 610 |
| Übrige Frischkäse | 1'154 | 1'152 | 1'316 | 1'440 | 1'454 | 1'310 | 1'377 | 1'222 | 1'233 | 1'182 | 1'108 | 1'246 | 15'194 |
| Frischkäse total | 3'280 | 3'211 | 3'780 | 3'690 | 3'921 | 3'688 | 3'824 | 3'574 | 3'439 | 3'417 | 3'119 | 3'674 | 42'617 |
| Weisseschimmelkäse, mager bis viertelfett | 0 | 0 | 0 | 0 | 0 | 0 | 0 | 0 | 0 | 0 | 0 | 0 | 0 |
| Weisseschimmelkäse, halb- bis vollfett | 113 | 123 | 119 | 89 | 96 | 101 | 82 | 107 | 97 | 101 | 105 | 103 | 1'236 |
| Weisseschimmelkäse, überfett | 120 | 124 | 150 | 126 | 117 | 111 | 101 | 116 | 150 | 148 | 129 | 83 | 1'475 |
| Blau-, Grünschimmelkäse | 0 | 1 | 1 | 1 | 1 | 1 | 1 | 1 | 1 | 1 | 1 | 0 | 9 |
| Tomme | 203 | 172 | 183 | 197 | 197 | 180 | 214 | 212 | 188 | 185 | 168 | 184 | 2'283 |
| Vacherin Mont d'Or | 60 | 34 | 2 | 0 | 0 | 0 | 0 | 25 | 101 | 120 | 111 | 76 | 529 |
| Anderer Weichkäse mager, viertelfett | 4 | 3 | 3 | 3 | 35 | 53 | 40 | 22 | 23 | 23 | 41 | 29 | 279 |
| Anderer Weichkäse, halb- bis vollfett | 65 | 66 | 70 | 69 | 66 | 69 | 187 | 67 | 79 | 70 | 71 | 62 | 941 |
| Anderer Weichkäse, überfett | 33 | 38 | 47 | 31 | 29 | 41 | 29 | 36 | 48 | 30 | 31 | 39 | 432 |
| Weichkäse total | 598 | 561 | 574 | 514 | 540 | 556 | 654 | 586 | 687 | 678 | 657 | 577 | 7'182 |
| Appenzeller Käse | 693 | 680 | 794 | 729 | 796 | 751 | 789 | 764 | 757 | 718 | 702 | 751 | 8'924 |
| Tilsiter | 326 | 317 | 389 | 353 | 366 | 333 | 354 | 343 | 379 | 328 | 305 | 384 | 4'177 |
| Walliser Käse (Walliser Raclettekäse) | 198 | 191 | 220 | 218 | 226 | 140 | 79 | 62 | 236 | 205 | 202 | 187 | 2'164 |
| Schweizer Raclettekäse | 563 | 497 | 632 | 958 | 1'101 | 1'240 | 1'231 | 1'184 | 1'271 | 1'247 | 874 | 740 | 11'538 |
| Vacherin Fribourgeois | 144 | 101 | 120 | 206 | 112 | 159 | 218 | 294 | 361 | 344 | 267 | 221 | 2'547 |
| Tête de Moine | 200 | 174 | 185 | 181 | 191 | 139 | 168 | 176 | 215 | 209 | 174 | 185 | 2'197 |
| Jurakäse | 17 | 20 | 26 | 20 | 22 | 12 | 13 | 21 | 17 | 18 | 24 | 17 | 229 |
| Winzerkäse | 32 | 32 | 43 | 39 | 31 | 35 | 41 | 31 | 31 | 39 | 34 | 34 | 422 |
| Mutschli | 41 | 53 | 40 | 42 | 35 | 52 | 41 | 40 | 79 | 54 | 52 | 55 | 584 |
| Alpkäse halbhart | -3 | 1 | 0 | 0 | 1 | 4 | 3 | 31 | 1'361 | 474 | 86 | 0 | 1'960 |
| Bündner Bergkäse | 91 | 87 | 91 | 91 | 97 | 77 | 51 | 24 | 28 | 47 | 74 | 82 | 840 |
| Berg- und Schnittkäse halbhart | 192 | 151 | 180 | 205 | 204 | 166 | 178 | 135 | 156 | 149 | 162 | 197 | 2'075 |
| St. Paulin Suisse | 50 | 51 | 50 | 102 | 67 | 71 | 60 | 42 | 66 | 75 | 55 | 43 | 732 |
| Schweizer Edamer | 33 | 36 | 25 | 88 | 43 | 12 | 27 | 9 | 27 | 25 | 22 | 42 | 389 |
| Kaltgereifte Käse | 3 | 1 | 2 | 2 | 2 | 1 | 2 | 0 | 2 | 1 | 1 | 1 | 18 |
| Halbhartkäse mit Schimmelbildung | 12 | 15 | 17 | 18 | 19 | 29 | 16 | 11 | 19 | 19 | 14 | 12 | 201 |
| Conveniencekäse | 107 | 130 | 254 | 218 | 311 | 171 | 205 | 142 | 155 | 153 | 85 | 120 | 2'051 |
| Schmelzrohware, vollfett | 200 | 215 | 184 | 103 | 157 | 140 | 96 | 79 | 75 | 103 | 116 | 168 | 1'636 |
| Anderer Halbhartkäse, mager bis viertelfett * | 51 | 58 | 63 | 62 | 53 | 66 | 44 | 51 | 45 | 52 | 42 | 45 | 632 |
| Anderer Halbhartkäse, halb- bis vollfett | 717 | 732 | 766 | 741 | 752 | 770 | 735 | 755 | 949 | 1'018 | 1'037 | 976 | 9'948 |
| Anderer Halbhartkäse, überfett | 192 | 216 | 146 | 235 | 215 | 209 | 200 | 172 | 218 | 209 | 188 | 187 | 2'387 |
| Halbhartkäse total | 3'858 | 3'759 | 4'228 | 4'611 | 4'800 | 4'579 | 4'552 | 4'368 | 6'447 | 5'486 | 4'515 | 4'446 | 55'649 |
| Emmentaler | 2'635 | 2'573 | 2'909 | 2'865 | 3'001 | 2'437 | 1'733 | 2'152 | 2'093 | 2'155 | 2'065 | 2'212 | 28'830 |
| Switzerland Swiss | 292 | 249 | 293 | 262 | 251 | 192 | 213 | 283 | 278 | 289 | 254 | 283 | 3'139 |
| Gruyère | 2'339 | 2'317 | 2'594 | 2'539 | 2'901 | 2'434 | 2'316 | 2'163 | 2'136 | 2'233 | 2'055 | 2'179 | 28'206 |
| Alpkäse hart | 0 | 0 | 0 | 0 | 32 | 129 | 126 | 155 | 992 | 348 | 47 | 0 | 1'829 |
| Anderer Hartkäse, mager bis viertelfett ** | 9 | 2 | 1 | 3 | 3 | 3 | 4 | 3 | 1 | 7 | 1 | 10 | 47 |
| Anderer Hartkäse, halb- bis vollfett | 802 | 781 | 765 | 837 | 829 | 738 | 678 | 606 | 608 | 725 | 628 | 599 | 8'596 |
| Anderer Hartkäse, überfett | 2 | 1 | 0 | 4 | 2 | 5 | 3 | 3 | 4 | 3 | 2 | 1 | 30 |
| Hartkäse total | 6'079 | 5'925 | 6'562 | 6'510 | 7'019 | 5'936 | 5'073 | 5'365 | 6'112 | 5'760 | 5'052 | 5'284 | 70'677 |
| Sbrinz | 179 | 177 | 179 | 183 | 202 | 232 | 142 | 144 | 162 | 180 | 166 | 182 | 2'128 |
| Extra Hartkäse total | 179 | 177 | 179 | 183 | 202 | 232 | 142 | 144 | 162 | 180 | 166 | 182 | 2'128 |
| Reiner Ziegenkäse | 23 | 48 | 76 | 91 | 101 | 87 | 87 | 76 | 119 | 94 | 37 | 30 | 869 |
| Reiner Schafkäse | 14 | 16 | 20 | 24 | 26 | 23 | 20 | 18 | 15 | 12 | 9 | 12 | 209 |
| Spezialprodukte total | 37 | 64 | 96 | 115 | 127 | 111 | 107 | 94 | 134 | 106 | 47 | 42 | 1'080 |
| Total alle Käsesorten | 14'031 | 13'697 | 15'421 | 15'625 | 16'608 | 15'103 | 14'352 | 14'131 | 16'981 | 15'629 | 13'555 | 14'205 | 179'338 |

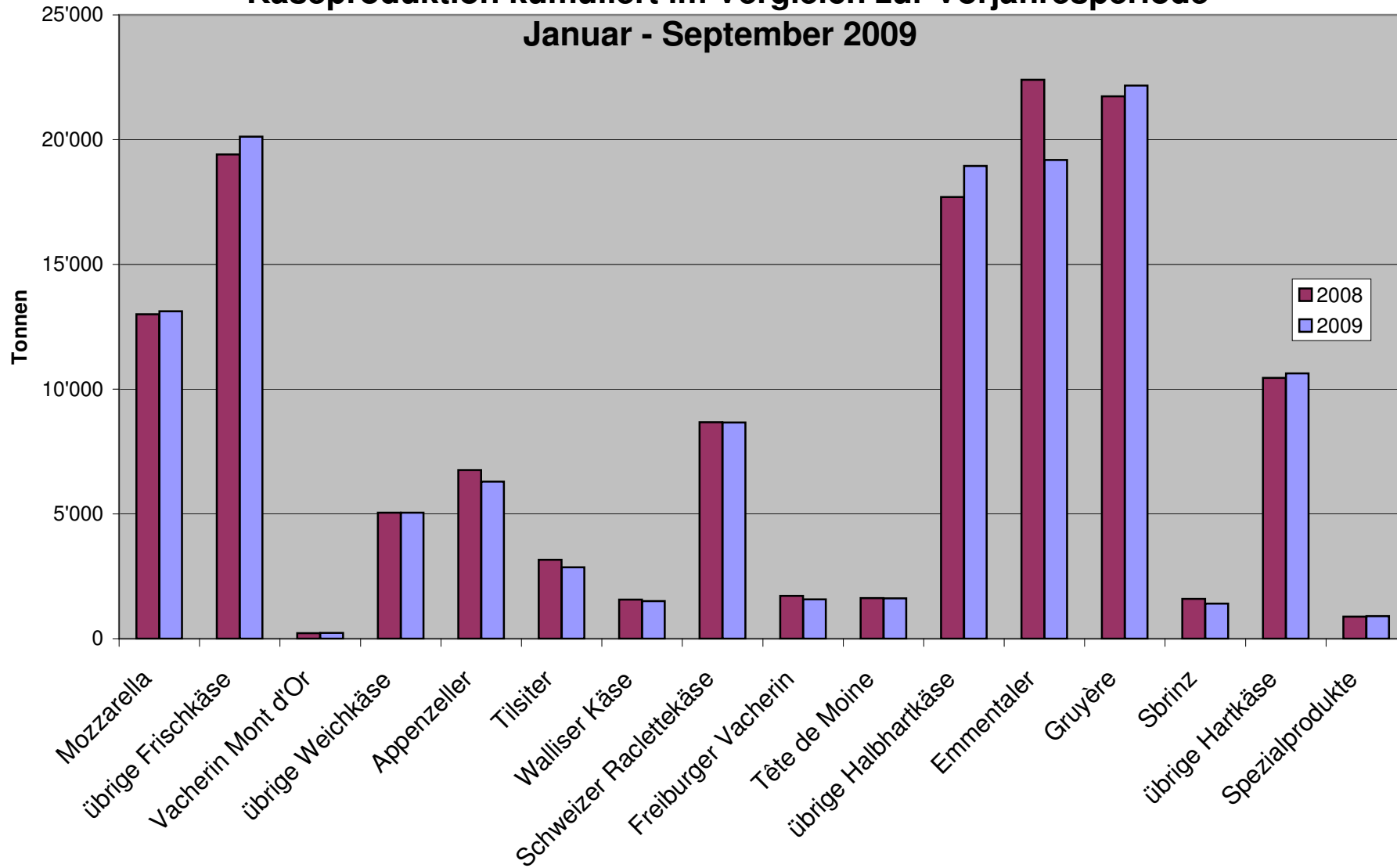
* inkl. Lokalspezialitäten

** inkl. Schmelzrohware und Lokalspezialitäten

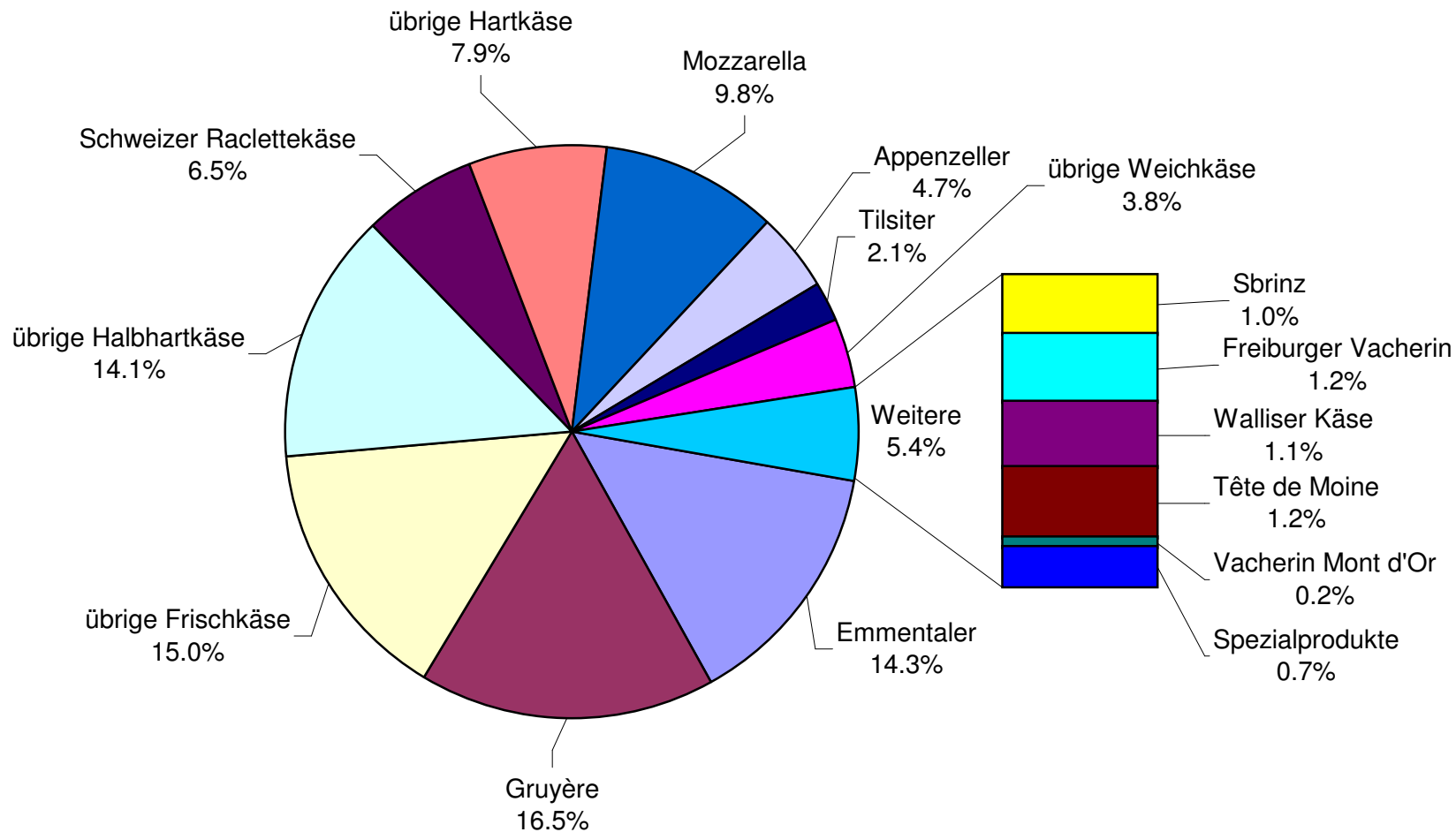
Käseproduktion September 2009 im Vergleich zum Vorjahresmonat



Käseproduktion kumuliert im Vergleich zur Vorjahresperiode Januar - September 2009



Käseproduktion Januar - September 2009 Total 134'351 Tonnen



Konsummilchproduktion

| Milchart | Monatliche Produktion | | Differenz zum Vorjahres-Monat | | Kumulierte Produktion | | Differenz zur Vorjahresperiode | |
|-------------------------------------|-----------------------|----------------|-------------------------------|------------|-----------------------|------------------|--------------------------------|-------------|
| | September 2008 | September 2009 | | | Jan. - Sep. 2008 | Jan. - Sep. 2009 | | |
| | Tonnen | Tonnen | Tonnen | (%) | Tonnen | Tonnen | Tonnen | (%) |
| Rohmilch | 791 | 593 | -198 | -25.0 | 7'784 | 6'884 | -900 | -11.6 |
| Fettangereicherte Milch past | 0 | 0 | 0 | | 0 | 0 | 0 | |
| Fettangereicherte Milch UHT | 89 | 83 | -6 | -6.7 | 762 | 743 | -19 | -2.5 |
| Vollmilch past. | 7'662 | 4'698 | -2'964 | -38.7 | 68'980 | 44'273 | -24'707 | -35.8 |
| Vollmilch UHT | 14'684 | 1'535 | -13'149 | -89.5 | 131'998 | 16'371 | -115'627 | -87.6 |
| Standardisierte Vollmilch past. 35g | 0 | 2'845 | 2'845 | | 0 | 24'320 | 24'320 | |
| Standardisierte Vollmilch UHT 35g | 0 | 14'087 | 14'087 | | 0 | 115'102 | 115'102 | |
| teiltrahmte Milch past. | 6'675 | 6'500 | -175 | -2.6 | 60'477 | 59'884 | -593 | -1.0 |
| teiltrahmte Milch UHT | 7'839 | 8'085 | 246 | 3.1 | 83'600 | 78'944 | -4'656 | -5.6 |
| Trinkmagermilch past. | 0 | 0 | 0 | | 110 | 6 | -104 | -94.5 |
| Trinkmagermilch UHT | 1'168 | 1'339 | 171 | 14.6 | 11'639 | 10'963 | -676 | -5.8 |
| Total Konsummilch | 38'908 | 39'765 | 857 | 2.2 | 365'350 | 357'490 | -7'860 | -2.2 |

Butterproduktion

| | Monatliche Produktion | | Differenz zum Vorjahres-Monat | | Kumulierte Produktion | | Differenz zur Vorjahresperiode | |
|--|-----------------------|----------------|-------------------------------|------|-----------------------|------------------|--------------------------------|-----|
| | September 2008 | September 2009 | | | Jan. - Sep. 2008 | Jan. - Sep. 2009 | | |
| | Tonnen | Tonnen | Tonnen | (%) | Tonnen | Tonnen | Tonnen | (%) |
| | 3'025 | 2'996 | -29 | -1.0 | 35'256 | 37'177 | 1'921 | 5.4 |

Produktion von Milchspezialitäten

Konsumrahm

| | Monatliche Produktion | | Differenz zum Vorjahres-Monat | | Kumulierte Produktion | | Differenz zur Vorjahresperiode | |
|-------------------------|-----------------------|----------------|-------------------------------|-------------|-----------------------|------------------|--------------------------------|------------|
| | September 2008 | September 2009 | Tonnen | (%) | Jan. - Sep. 2008 | Jan. - Sep. 2009 | Tonnen | (%) |
| | Tonnen | Tonnen | | | Tonnen | Tonnen | | |
| Doppelrahm | 65 | 68 | 3 | 4.6 | 471 | 494 | 23 | 4.9 |
| Vollrahm 35% | 2'411 | 2'380 | -31 | -1.3 | 19'647 | 20'108 | 461 | 2.3 |
| Halbrahm | 1'208 | 1'099 | -109 | -9.0 | 10'094 | 10'277 | 183 | 1.8 |
| Kaffeerahm | 2'111 | 2'218 | 107 | 5.1 | 18'701 | 18'368 | -333 | -1.8 |
| Total Konsumrahm | 5'795 | 5'765 | -30 | -0.5 | 48'913 | 49'247 | 334 | 0.7 |

Andere Milchspezialitäten

| | Monatliche Produktion | | Differenz zum Vorjahres-Monat | | Kumulierte Produktion | | Differenz zur Vorjahresperiode | |
|-----------------|-----------------------|----------------|-------------------------------|-------|-----------------------|------------------|--------------------------------|------|
| | September 2008 | September 2009 | Tonnen | (%) | Jan. - Sep. 2008 | Jan. - Sep. 2009 | Tonnen | (%) |
| | Tonnen | Tonnen | | | Tonnen | Tonnen | | |
| Sauermilch | 621 | 612 | -9 | -1.4 | 4'877 | 5'123 | 246 | 5.0 |
| Sauerrahm | 201 | 175 | -26 | -12.9 | 1'608 | 1'804 | 196 | 12.2 |
| Dessertprodukte | 1'920 | 2'025 | 105 | 5.5 | 17'548 | 16'812 | -736 | -4.2 |
| Milchgetränke | 7'756 | 5'757 | -1'999 | -25.8 | 57'610 | 56'850 | -760 | -1.3 |
| Jogurt | 11'395 | 11'747 | 352 | 3.1 | 108'189 | 107'802 | -387 | -0.4 |
| Kefir | 15 | 12 | -3 | -20.0 | 151 | 138 | -13 | -8.6 |
| Speiseeis | 1'416 | 1'295 | -121 | -8.5 | 19'075 | 20'388 | 1'313 | 6.9 |

Produktion Milchpulver und Milchkondensat

| | Monatliche Produktion | | Differenz zum Vorjahres-Monat | | Kumulierte Produktion | | Differenz zur Vorjahresperiode | |
|---|-----------------------|-----------------------|-------------------------------|-------|-------------------------|-------------------------|--------------------------------|-------|
| | <i>September 2008</i> | <i>September 2009</i> | | | <i>Jan. - Sep. 2008</i> | <i>Jan. - Sep. 2009</i> | | |
| | Tonnen | Tonnen | Tonnen | (%) | Tonnen | Tonnen | Tonnen | (%) |
| Vollmilchpulver | 1'423 | 1'402 | -21 | -1.5 | 12'418 | 11'586 | -832 | -6.7 |
| Teilentrahmtes Milchpulver | 271 | 321 | 50 | 18.5 | 2'736 | 3'081 | 345 | 12.6 |
| Fettangereichertes Milchpulver & Rahmpulver | 7 | 40 | 33 | 471.4 | 218 | 181 | -37 | -17.0 |
| Magermilchpulver | 1'678 | 1'914 | 236 | 14.1 | 22'016 | 29'310 | 7'294 | 33.1 |
| Buttermilchpulver | 32 | 8 | -24 | -75.0 | 228 | 136 | -92 | -40.4 |
| Molkenpulver | 161 | 196 | 35 | 21.7 | 1'235 | 1'002 | -233 | -18.9 |
| Milchkondensat | 233 | 235 | 2 | 0.9 | 1'906 | 1'837 | -69 | -3.6 |

Käseexport nach Produkten/Gruppen

| Käsesorte / Kategorie | Monatliche Exporte | | Differenz zum Vorjahres-Monat | | Kumulierte Exporte | | Differenz zur Vorjahresperiode | |
|-------------------------------------|--------------------------|--------------------------|-------------------------------|--------------|----------------------------|----------------------------|--------------------------------|--------------|
| | September 2008 Tonnen | September 2009 Tonnen | Tonnen | (%) | Jan. - Sep. 2008 Tonnen | Jan. - Sep. 2009 Tonnen | Tonnen | (%) |
| Frischkäse inkl. Quark total | 117.5 | 35.0 | -82.5 | -70.2 | 446.5 | 1'013.8 | 567.3 | 127.0 |
| Vacherin Mont d'Or | 2.8 | 2.7 | -0.1 | 0.0 | 11.3 | 10.5 | -0.8 | -7.0 |
| Weichkäse andere | 79.4 | 192.2 | 112.7 | 141.9 | 549.5 | 921.0 | 371.5 | 67.6 |
| Weichkäse total | 82.2 | 194.8 | 112.6 | 136.9 | 560.8 | 931.5 | 370.7 | 66.1 |
| Appenzeller Käse | 504.6 | 519.4 | 14.9 | 2.9 | 3'784.0 | 3'759.2 | -24.8 | -0.7 |
| Tilsiter | 63.9 | 31.7 | -32.2 | -50.4 | 526.8 | 300.5 | -226.3 | -43.0 |
| Raclette | 97.7 | 107.7 | 10.0 | 10.2 | 430.1 | 395.7 | -34.5 | -8.0 |
| Vacherin Fribourgeois | 24.1 | 27.4 | 3.3 | 13.6 | 140.5 | 166.0 | 25.6 | 18.2 |
| Tête de Moine | 108.6 | 101.9 | -6.7 | -6.2 | 826.2 | 742.2 | -84.0 | -10.2 |
| Halbhartkäse andere | 249.1 | 360.5 | 111.4 | 44.7 | 2'313.3 | 4'029.2 | 1'715.9 | 74.2 |
| Halbhartkäse total | 1'048.0 | 1'148.6 | 100.6 | 9.6 | 8'021.0 | 9'392.9 | 1'371.9 | 17.1 |
| Emmentaler | 2'094.9 | 1'927.9 | -167.0 | -8.0 | 16'098.6 | 14'541.5 | -1'557.0 | -9.7 |
| Gruyère | 1'072.2 | 1'050.9 | -21.3 | -2.0 | 7'912.6 | 7'386.5 | -526.1 | -6.6 |
| Switzerland Swiss | 88.6 | 158.3 | 69.7 | 78.7 | 1'136.9 | 1'461.7 | 324.8 | 28.6 |
| Hartkäse übrige | 131.6 | 247.3 | 115.7 | 87.9 | 914.0 | 1'509.5 | 595.5 | 65.2 |
| Hartkäse total | 3'387.4 | 3'384.4 | -3.0 | -0.1 | 26'062.1 | 24'899.3 | -1'162.9 | -4.5 |
| Sbrinz | 27.4 | 39.6 | 12.2 | 44.4 | 240.6 | 234.1 | -6.4 | -2.7 |
| Extra Hartkäse total | 27.4 | 39.6 | 12.2 | 44.4 | 240.6 | 234.1 | -6.4 | -2.7 |
| Schmelzkäse total | 316.5 | 241.3 | -75.3 | -23.8 | 3'168.3 | 2'591.5 | -576.8 | -18.2 |
| Fertigfondue | 581.6 | 522.1 | -59.5 | -10.2 | 2'559.5 | 2'819.6 | 260.2 | 10.2 |
| andere Käse total | 72.7 | 115.6 | 42.9 | 59.0 | 935.3 | 1'194.9 | 259.6 | 27.8 |
| Total | 5'633.4 | 5'681.4 | 48.0 | 0.9 | 41'994.1 | 43'077.6 | 1'083.5 | 2.6 |

Quelle: OZD

Käseexport nach Ländern

September 2009

| | Emmentaler | Gruyère | Sbrinz | Switzerland Swiss | übrige Hartkäse | Hartkäse total | Appenzeller Käse | Vacherin Fribourgeois | Raclette | Tête de Moine | Tilsiter | übrige Halbhartkäse | Halbhartkäse total | Frischkäse inkl. Quark | Vacherin Mont d'Or | übrige Weichkäse | Weichkäse total | Schmelzkäse | andere Käse | Fertigfondue | TOTAL | |
|--|------------|---------|--------|-------------------|-----------------|----------------|------------------|-----------------------|----------|---------------|----------|---------------------|--------------------|------------------------|--------------------|------------------|-----------------|-------------|-------------|--------------|-------|---------|
| Land | t | t | t | t | t | t | t | t | t | t | t | t | t | t | t | t | t | t | t | t | t | t |
| EUROPA | | | | | | | | | | | | | | | | | | | | | | |
| Deutschland | 327.1 | 227.1 | * | * | 24.2 | 578.3 | 387.2 | 2.7 | 24.2 | 48.7 | 24.5 | 265.9 | 753.3 | 21.4 | 0.0 | 139.6 | 161.0 | 3.5 | 96.3 | 107.2 | | 1'699.6 |
| Frankreich | 189.9 | 216.4 | * | * | 6.4 | 412.7 | 80.4 | 17.6 | 31.1 | 26.7 | * | 7.1 | 162.9 | 0.1 | * | 31.9 | 32.0 | 1.4 | 1.0 | 66.3 | | 676.3 |
| Italien | 1'013.2 | 24.6 | * | * | 193.0 | 1'230.8 | 1.6 | * | * | 4.3 | * | 0.8 | 6.6 | 0.2 | 0.1 | 13.3 | 13.6 | 179.5 | 1.5 | 10.2 | | 1'442.2 |
| BeNeLux | 73.1 | 74.8 | * | * | 9.3 | 157.2 | 8.0 | 1.7 | 12.0 | 6.8 | 0.1 | 2.2 | 30.7 | 0.0 | * | 5.3 | 5.3 | 27.7 | 12.7 | 54.3 | | 288.0 |
| Grossbritannien | 21.2 | 53.7 | * | * | 4.7 | 79.6 | 1.7 | * | * | 0.2 | * | 0.4 | 2.4 | 0.0 | * | 0.1 | 0.1 | 0.0 | 0.1 | 1.0 | | 83.1 |
| Spanien/Portugal | 11.8 | 18.3 | * | * | 0.0 | 30.1 | * | * | * | * | * | 0.0 | 0.0 | 0.0 | * | 0.0 | 0.0 | 0.1 | 0.0 | 0.0 | | 30.2 |
| Europa nicht zugeordnet / übriges Europa (Fertigfondue übrige Länder ganze Welt) | 81.3 | 76.4 | 23.5 | 2.7 | 5.4 | 189.3 | 24.7 | 2.5 | 6.8 | 10.7 | 6.0 | 73.0 | 123.8 | 0.0 | 2.5 | 0.2 | 2.7 | 1.1 | 2.2 | 15.7 | | 334.8 |
| TOTAL EUROPA | 1'717.5 | 691.2 | 23.5 | 2.7 | 243.1 | 2'678.1 | 503.6 | 24.4 | 74.1 | 97.4 | 30.7 | 349.4 | 1'079.7 | 21.7 | 2.6 | 190.4 | 214.7 | 213.3 | 113.8 | 254.7 | | 4'554.3 |
| Andere Länder | | | | | | | | | | | | | | | | | | | | | | |
| Kanada | 91.3 | * | * | * | 2.0 | 93.3 | 6.2 | * | * | 2.3 | * | 5.6 | 14.1 | 0.0 | * | 0.0 | 0.0 | 17.2 | 0.0 | 125.2 | | 249.8 |
| USA | 91.8 | 237.3 | * | * | 0.4 | 329.4 | 7.5 | 0.3 | 12.9 | 1.6 | * | 3.8 | 26.0 | 0.0 | * | 0.2 | 0.2 | 7.4 | 0.0 | 90.0 | | 453.1 |
| Kanada / USA nicht zugeordnet/ andere Länder | 27.3 | 122.4 | 16.0 | 155.6 | 1.8 | 323.1 | 2.1 | 2.7 | 20.7 | 0.6 | 1.0 | 1.7 | 28.9 | 13.3 | 0.1 | 1.5 | 14.9 | 3.5 | 1.8 | 52.2 | | 424.3 |
| TOTAL ANDERE LÄNDER | 210.4 | 359.7 | 16.0 | 155.6 | 4.2 | 745.9 | 15.8 | 3.0 | 33.6 | 4.5 | 1.0 | 11.0 | 69.0 | 13.3 | 0.1 | 1.7 | 15.1 | 28.0 | 1.8 | 267.4 | | 1'127.1 |
| TOTAL | 1'927.9 | 1'050.9 | 39.6 | 158.3 | 247.3 | 3'424.0 | 519.4 | 27.4 | 107.7 | 101.9 | 31.7 | 360.5 | 1'148.6 | 35.0 | 2.7 | 192.2 | 229.8 | 241.3 | 115.6 | 522.1 | | 5'681.4 |

* Aus Datenschutzgründen sind Käseexporte mit weniger als drei Exporteuren nicht nach Ländern zugeordnet (Zusammenzug in 'Europa nicht zugeordnet' bzw. Kanada USA nicht zugeordnet/andere Länder)

Quelle: OZD

Käseexport nach Ländern

September 2008

| Land | Käseexport nach Ländern | | | | | | | | | | | | | | | | | | | | TOTAL |
|---|-------------------------|---------|------|------|-------|---------|-------|------|------|-------|------|-------|---------|-------|-----|------|-------|-------|------|-------|-------|
| | t | t | t | t | t | t | t | t | t | t | t | t | t | t | t | t | t | t | t | t | |
| EUROPA | | | | | | | | | | | | | | | | | | | | | |
| Deutschland | 282.3 | 232.7 | * | * | 75.8 | 590.8 | 366.0 | 2.9 | 30.4 | 54.4 | 53.9 | 181.4 | 689.0 | 8.8 | 0.0 | 41.5 | 50.3 | 15.1 | 66.3 | 207.2 | |
| Frankreich | 158.7 | 214.7 | * | * | 20.8 | 394.2 | 88.8 | 15.9 | 13.3 | 25.5 | * | 8.6 | 152.1 | 0.2 | * | 11.1 | 11.2 | 4.0 | 0.6 | 56.0 | |
| Italien | 1'213.4 | 16.5 | * | * | 10.8 | 1'240.7 | 0.4 | * | * | 2.5 | * | 0.4 | 3.4 | 0.0 | 0.0 | 0.0 | 0.0 | 226.5 | 0.0 | 0.0 | |
| BeNeLux | 87.2 | 68.3 | * | * | 8.9 | 164.4 | 7.5 | 1.5 | 19.3 | 9.1 | 0.4 | 2.0 | 39.9 | 0.0 | * | 0.0 | 0.0 | 40.4 | 0.2 | 137.5 | |
| Grossbritannien | 22.9 | 50.2 | * | * | 0.1 | 73.1 | 1.2 | * | * | 0.2 | * | 0.2 | 1.6 | 0.0 | * | 0.5 | 0.5 | 1.9 | 0.0 | 1.7 | |
| Spanien/Portugal | 24.0 | 8.5 | * | * | 0.0 | 32.6 | * | * | * | * | * | 0.0 | 0.0 | 0.0 | * | 0.0 | 0.0 | 2.8 | 0.0 | 0.0 | |
| Europa nicht zugeordnet / übriges Europa | 104.9 | 85.4 | 25.3 | 13.9 | 7.5 | 237.0 | 21.7 | 1.2 | 6.3 | 12.0 | 8.3 | 41.6 | 91.1 | 0.0 | 2.8 | 23.0 | 25.8 | 3.2 | 2.3 | 79.1 | |
| TOTAL EUROPA | 1'893.4 | 676.3 | 25.3 | 13.9 | 123.8 | 2'732.7 | 485.7 | 21.6 | 69.3 | 103.9 | 62.6 | 234.2 | 977.1 | 9.0 | 2.8 | 76.2 | 87.9 | 293.9 | 69.3 | 481.4 | |
| Andere Länder | | | | | | | | | | | | | | | | | | | | | |
| Kanada | 55.0 | * | * | * | 0.0 | 55.0 | 2.3 | * | * | 0.9 | * | 5.0 | 8.2 | 0.0 | * | 0.0 | 0.0 | 11.1 | 0.0 | 32.8 | |
| USA | 113.0 | 257.6 | * | * | 4.0 | 374.6 | 15.1 | 0.9 | 15.2 | 1.6 | * | 7.8 | 40.6 | 0.0 | * | 0.5 | 0.5 | 8.2 | 0.5 | 67.3 | |
| Kanada / USA nicht zugeordnet/ andere Länder | 33.5 | 138.3 | 2.1 | 74.7 | 3.9 | 252.4 | 1.5 | 1.6 | 13.2 | 2.3 | 1.3 | 2.1 | 22.1 | 108.5 | 0.0 | 2.8 | 111.3 | 3.3 | 2.9 | 0.0 | |
| TOTAL ANDERE LÄNDER | 201.5 | 395.9 | 2.1 | 74.7 | 7.9 | 682.0 | 18.9 | 2.6 | 28.4 | 4.8 | 1.3 | 14.9 | 70.9 | 108.5 | 0.0 | 3.2 | 111.8 | 22.6 | 3.4 | 100.1 | |
| TOTAL | 2'094.9 | 1'072.2 | 27.4 | 88.6 | 131.6 | 3'414.8 | 504.6 | 24.1 | 97.7 | 108.6 | 63.9 | 249.1 | 1'048.0 | 117.5 | 2.8 | 79.4 | 199.7 | 316.5 | 72.7 | 581.6 | |

* Aus Datenschutzgründen sind Käseexporte mit weniger als drei Exporteuren nicht nach Ländern zugeordnet (Zusammenzug in 'Europa nicht zugeordnet' bzw. Kanada USA nicht zugeordnet/andere Länder)

Quelle: OZD

Käseexport nach Ländern, kumuliert

Januar bis September 2009

| Land | Emmentaler | | Gruyère | | Sbrinz | | Switzerland Swiss | | übrige Hartkäse | | Hartkäse total | | Appenzeller Käse | | Vacherin Fribourgeois | | Raclette | | Tête de Moine | | Tilsiter | | übrige Halbhartkäse | | Halbhartkäse total | | Frischkäse inkl. Quark | | Vacherin Mont d'Or | | übrige Weichkäse | | Weichkäse total | | Schmelzkäse | | andere Käse | | Fertigfondue (Quelle: SE55K) | | TOTAL |
|--|------------|---------|---------|---------|---------|----------|-------------------|---------|-----------------|-------|----------------|---------|------------------|---------|-----------------------|-------|----------|---------|---------------|---------|----------|---|---------------------|---|--------------------|---|------------------------|---|--------------------|---|------------------|---|-----------------|---|-------------|---|-------------|---|------------------------------|----------|-------|
| | t | t | t | t | t | t | t | t | t | t | t | t | t | t | t | t | t | t | t | t | t | t | t | t | t | t | t | t | t | t | t | t | t | t | t | t | t | t | t | | |
| EUROPA | | | | | | | | | | | | | | | | | | | | | | | | | | | | | | | | | | | | | | | | | |
| Deutschland | 2'331.8 | 1'695.3 | * | * | | 405.3 | 4'432.3 | 2'923.5 | 23.0 | 116.5 | 376.1 | 241.7 | 2'707.4 | 6'388.1 | 230.8 | 0.3 | 626.7 | 857.8 | 72.9 | 975.4 | 698.4 | | | | | | | | | | | | | | | | | | | 13'425.0 | |
| Frankreich | 1'448.3 | 1'444.9 | * | * | | 143.3 | 3'036.6 | 419.0 | 99.5 | 67.1 | 194.0 | * | 54.3 | 833.9 | 0.8 | * | 179.0 | 179.8 | 6.9 | 45.5 | 364.3 | | | | | | | | | | | | | | | | | | 4'466.8 | | |
| Italien | 8'076.7 | 153.8 | * | * | | 807.1 | 9'037.6 | 8.1 | * | * | 19.0 | * | 67.0 | 94.1 | 0.5 | 0.1 | 13.5 | 14.0 | 2'007.9 | 16.8 | 30.4 | | | | | | | | | | | | | | | | | | 11'200.8 | | |
| BeNeLux | 688.6 | 556.2 | * | * | | 15.0 | 1'259.8 | 52.4 | 9.3 | 69.4 | 54.3 | 1.3 | 15.9 | 202.6 | 0.0 | * | 18.7 | 18.8 | 202.5 | 66.7 | 492.0 | | | | | | | | | | | | | | | | | | 2'242.3 | | |
| Grossbritannien | 196.9 | 486.9 | * | * | | 25.4 | 709.2 | 15.8 | * | * | 1.3 | * | 1.5 | 18.6 | 0.0 | * | 0.7 | 0.7 | 13.8 | 22.8 | 38.2 | | | | | | | | | | | | | | | | | | 803.3 | | |
| Spanien/Portugal | 91.7 | 180.7 | * | * | | 0.0 | 272.4 | * | * | * | * | * | 0.2 | 0.2 | 0.0 | * | 0.0 | 0.0 | 27.8 | 0.0 | 0.0 | | | | | | | | | | | | | | | | | | 300.4 | | |
| Europa nicht zugeordnet / übriges Europa (Fertigfondue übrige Länder ganze Welt) | 530.6 | 558.8 | 191.8 | 378.1 | 74.8 | 1'734.2 | 272.6 | 20.1 | 30.8 | 76.6 | 43.9 | 1'099.3 | 1'543.4 | 2.7 | 9.9 | 69.5 | 82.1 | 3.1 | 29.5 | 44.8 | | | | | | | | | | | | | | | | | | | 3'437.0 | | |
| TOTAL EUROPA | 13'364.6 | 5'076.6 | 191.8 | 378.1 | 1'470.9 | 20'482.1 | 3'691.4 | 151.9 | 283.8 | 721.3 | 286.8 | 3'945.6 | 9'080.9 | 234.8 | 10.3 | 908.0 | 1'153.1 | 2'334.8 | 1'156.7 | 1'668.0 | | | | | | | | | | | | | | | | | | | 35'875.6 | | |
| Andere Länder | | | | | | | | | | | | | | | | | | | | | | | | | | | | | | | | | | | | | | | | | |
| Kanada | 416.8 | * | * | * | 7.6 | 424.5 | 27.0 | * | * | 8.9 | * | 21.6 | 57.5 | 0.0 | * | 0.0 | 0.0 | 117.5 | 0.2 | 421.0 | | | | | | | | | | | | | | | | | | | 1'020.6 | | |
| USA | 476.2 | 1'293.6 | * | * | 5.9 | 1'775.7 | 26.4 | 3.8 | 34.5 | 7.4 | * | 22.9 | 95.0 | 0.0 | * | 3.1 | 3.1 | 65.1 | 1.3 | 252.0 | | | | | | | | | | | | | | | | | | | 2'192.2 | | |
| Kanada / USA nicht zugeordnet/ andere Länder | 283.9 | 1'016.4 | 42.3 | 1'083.5 | 25.0 | 2'451.2 | 14.5 | 10.3 | 77.4 | 4.5 | 13.7 | 39.1 | 159.5 | 779.0 | 0.2 | 9.9 | 789.1 | 74.2 | 36.7 | 478.6 | | | | | | | | | | | | | | | | | | | 3'989.3 | | |
| TOTAL ANDERE LÄNDER | 1'177.0 | 2'309.9 | 42.3 | 1'083.5 | 38.6 | 4'651.3 | 67.8 | 14.1 | 111.9 | 20.8 | 13.7 | 83.6 | 312.0 | 779.0 | 0.2 | 13.0 | 792.2 | 256.7 | 38.3 | 1'151.6 | | | | | | | | | | | | | | | | | | | 7'202.0 | | |
| TOTAL | 14'541.5 | 7'386.5 | 234.1 | 1'461.7 | 1'509.5 | 25'133.4 | 3'759.2 | 166.0 | 395.7 | 742.2 | 300.5 | 4'029.2 | 9'392.9 | 1'013.8 | 10.5 | 921.0 | 1'945.3 | 2'591.5 | 1'194.9 | 2'819.6 | | | | | | | | | | | | | | | | | | | 43'077.6 | | |

* Aus Datenschutzgründen sind Käseexporte mit weniger als drei Exporteuren nicht nach Ländern zugeordnet (Zusammenzug in 'Europa nicht zugeordnet' bzw. Kanada USA nicht zugeordnet/andere Länder)

Quelle: OZD

Käseexport nach Ländern

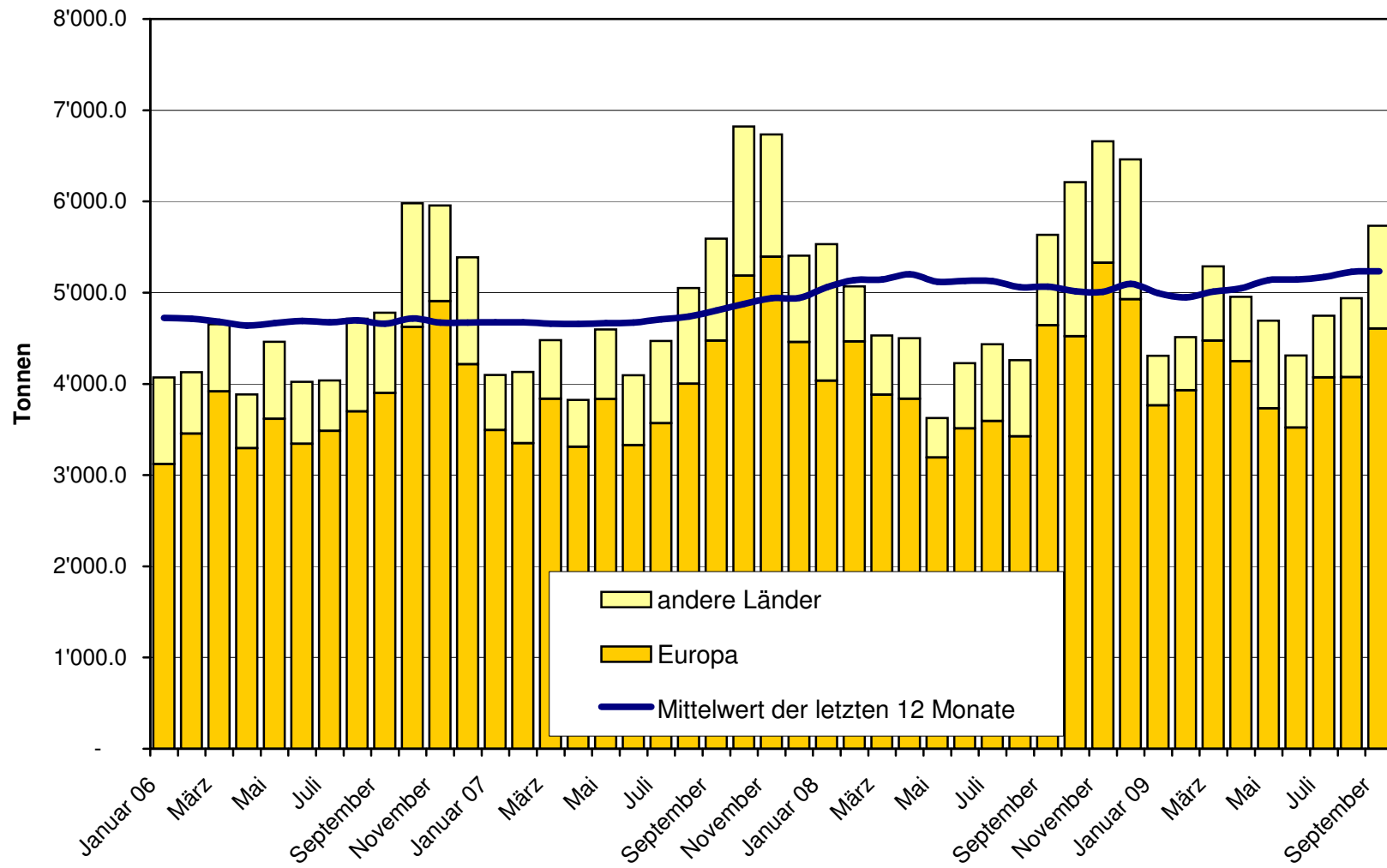
Januar bis September 2008

| | Emmentaler | Gruyere | Sbrinz | Switzerland Swiss | übrige Hartkäse | Hartkäse total | Appenzeller Käse | Vacherin Fribourgeois | Raclette | Tête de Moine | Tilsiter | übrige Halbhartkäse | Halbhartkäse total | Frischkäse inkl. Quark | Vacherin Mont d'Or | übrige Weichkäse | Weichkäse total | Schmelzkäse | andere Käse | Fertigfondue | TOTAL | |
|---|------------|---------|--------|-------------------|-----------------|----------------|------------------|-----------------------|----------|---------------|----------|---------------------|--------------------|------------------------|--------------------|------------------|-----------------|-------------|-------------|--------------|-------|----------|
| Land | t | t | t | t | t | t | t | t | t | t | t | t | t | t | t | t | t | t | t | t | t | t |
| EUROPA | | | | | | | | | | | | | | | | | | | | | | |
| Deutschland | 2'297.5 | 1'762.5 | * | * | 520.6 | 4'580.6 | 2'929.3 | 23.7 | 138.0 | 453.9 | 427.4 | 1'443.9 | 5'416.2 | 169.2 | 0.3 | 335.7 | 505.2 | 342.6 | 464.1 | 467.2 | | 11'775.9 |
| Frankreich | 1'463.1 | 1'354.0 | * | * | 47.0 | 2'864.1 | 424.1 | 78.1 | 62.2 | 182.5 | * | 46.1 | 793.1 | 2.4 | * | 76.4 | 78.8 | 12.3 | 5.3 | 318.8 | | 4'072.3 |
| Italien | 9'034.6 | 171.2 | * | * | 155.4 | 9'361.2 | 10.4 | * | * | 21.6 | * | 3.9 | 35.9 | 156.4 | 0.1 | 1.1 | 157.5 | 2'004.4 | 8.1 | 25.5 | | 11'592.6 |
| BeNeLux | 747.3 | 510.2 | * | * | 13.3 | 1'270.8 | 51.0 | 9.0 | 72.8 | 53.7 | 2.1 | 12.6 | 201.1 | 0.0 | * | 0.3 | 0.3 | 258.8 | 60.3 | 494.9 | | 2'286.2 |
| Grossbritannien | 255.0 | 523.8 | * | * | 2.0 | 780.8 | 11.2 | * | * | 1.7 | * | 1.4 | 14.2 | 0.0 | * | 2.1 | 2.1 | 21.3 | 0.0 | 24.4 | | 842.8 |
| Spanien/Portugal | 122.7 | 176.9 | * | * | 0.0 | 299.6 | * | * | * | * | * | 0.0 | 0.0 | 0.0 | * | 0.0 | 0.0 | 22.0 | 0.0 | 0.0 | | 321.6 |
| Europa nicht zugeordnet / übriges Europa | 684.4 | 592.2 | 211.9 | 140.9 | 85.0 | 1'714.4 | 274.6 | 14.3 | 35.7 | 86.3 | 83.2 | 681.4 | 1'175.5 | 5.8 | 9.5 | 116.7 | 132.0 | 7.4 | 10.4 | 632.6 | | 3'673.5 |
| TOTAL EUROPA | 14'604.5 | 5'090.6 | 211.9 | 140.9 | 823.4 | 20'871.3 | 3'700.6 | 125.1 | 308.7 | 799.6 | 512.7 | 2'189.3 | 7'635.9 | 333.7 | 9.9 | 532.3 | 875.9 | 2'668.9 | 548.1 | 1'964.7 | | 34'564.9 |
| Andere Länder | | | | | | | | | | | | | | | | | | | | | | |
| Kanada | 410.3 | * | * | * | 1.2 | 411.5 | 14.7 | * | * | 7.9 | * | 23.2 | 45.8 | 0.0 | * | 0.0 | 0.0 | 173.8 | 0.1 | 355.0 | | 986.2 |
| USA | 675.0 | 1'664.4 | * | * | 55.7 | 2'395.0 | 55.4 | 4.9 | 46.9 | 10.2 | * | 76.5 | 194.0 | 0.0 | * | 3.8 | 3.8 | 120.9 | 1.3 | 240.9 | | 2'955.9 |
| Kanada / USA nicht zugeordnet/ andere Länder | 408.7 | 1'157.6 | 28.7 | 996.0 | 33.8 | 2'624.9 | 13.4 | 10.5 | 74.5 | 8.4 | 14.2 | 24.3 | 145.3 | 112.8 | 1.4 | 13.5 | 127.7 | 204.7 | 385.8 | 0.0 | | 3'488.4 |
| TOTAL ANDERE LÄNDER | 1'494.0 | 2'822.0 | 28.7 | 996.0 | 90.7 | 5'431.4 | 83.5 | 15.4 | 121.4 | 26.6 | 14.2 | 124.0 | 385.1 | 112.8 | 1.4 | 17.2 | 131.4 | 499.4 | 387.2 | 596.0 | | 7'430.5 |
| TOTAL | 16'098.6 | 7'912.6 | 240.6 | 1'136.9 | 914.0 | 26'302.7 | 3'784.0 | 140.5 | 430.1 | 826.2 | 526.8 | 2'313.3 | 8'021.0 | 446.5 | 11.3 | 549.5 | 1'007.3 | 3'168.3 | 935.3 | 2'559.5 | | 41'995.3 |

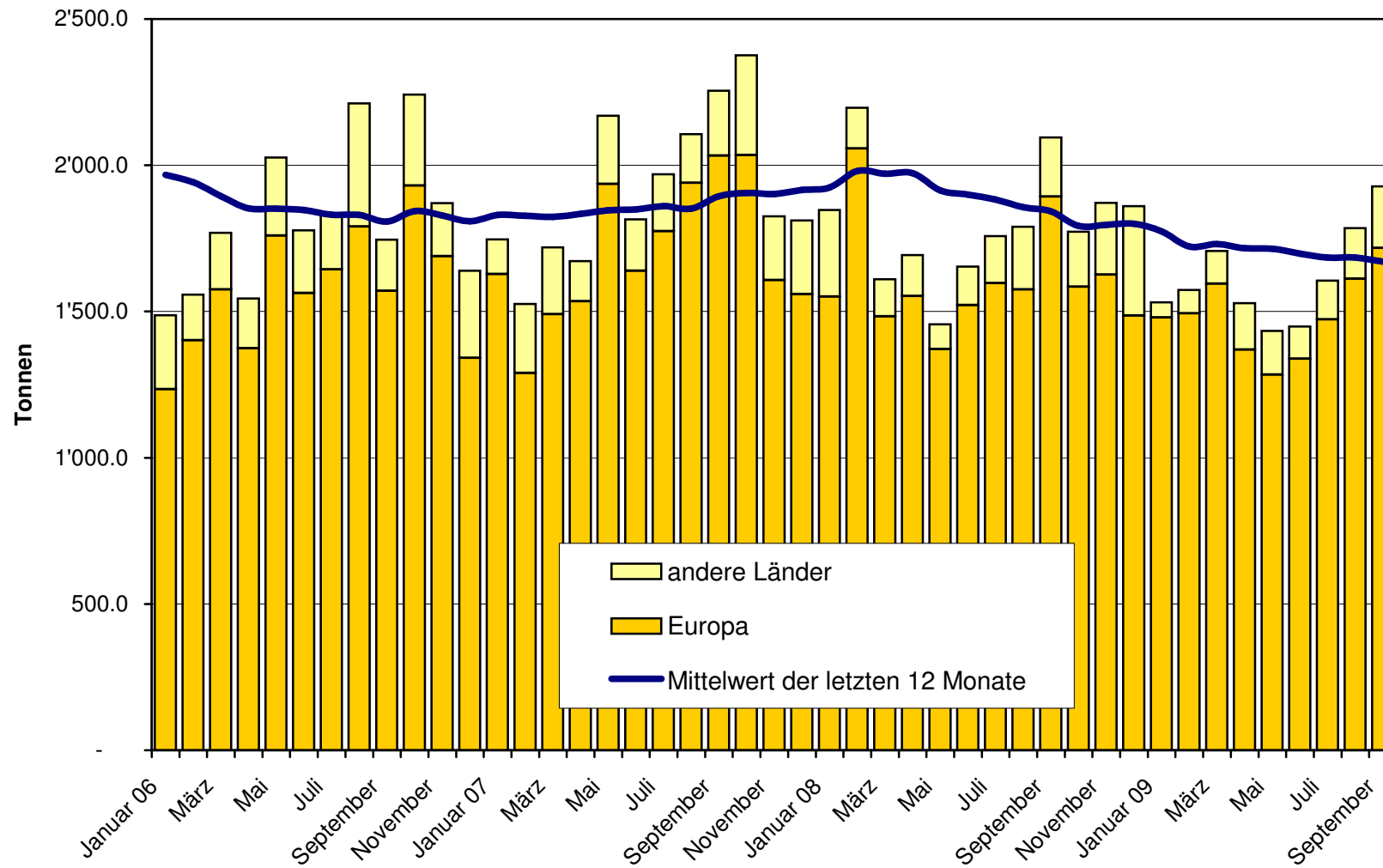
* Aus Datenschutzgründen sind Käseexporte mit weniger als drei Exporteuren nicht nach Ländern zugeordnet (Zusammenzug in 'Europa nicht zugeordnet' bzw. Kanada USA nicht zugeordnet/andere Länder)

Quelle: OZD

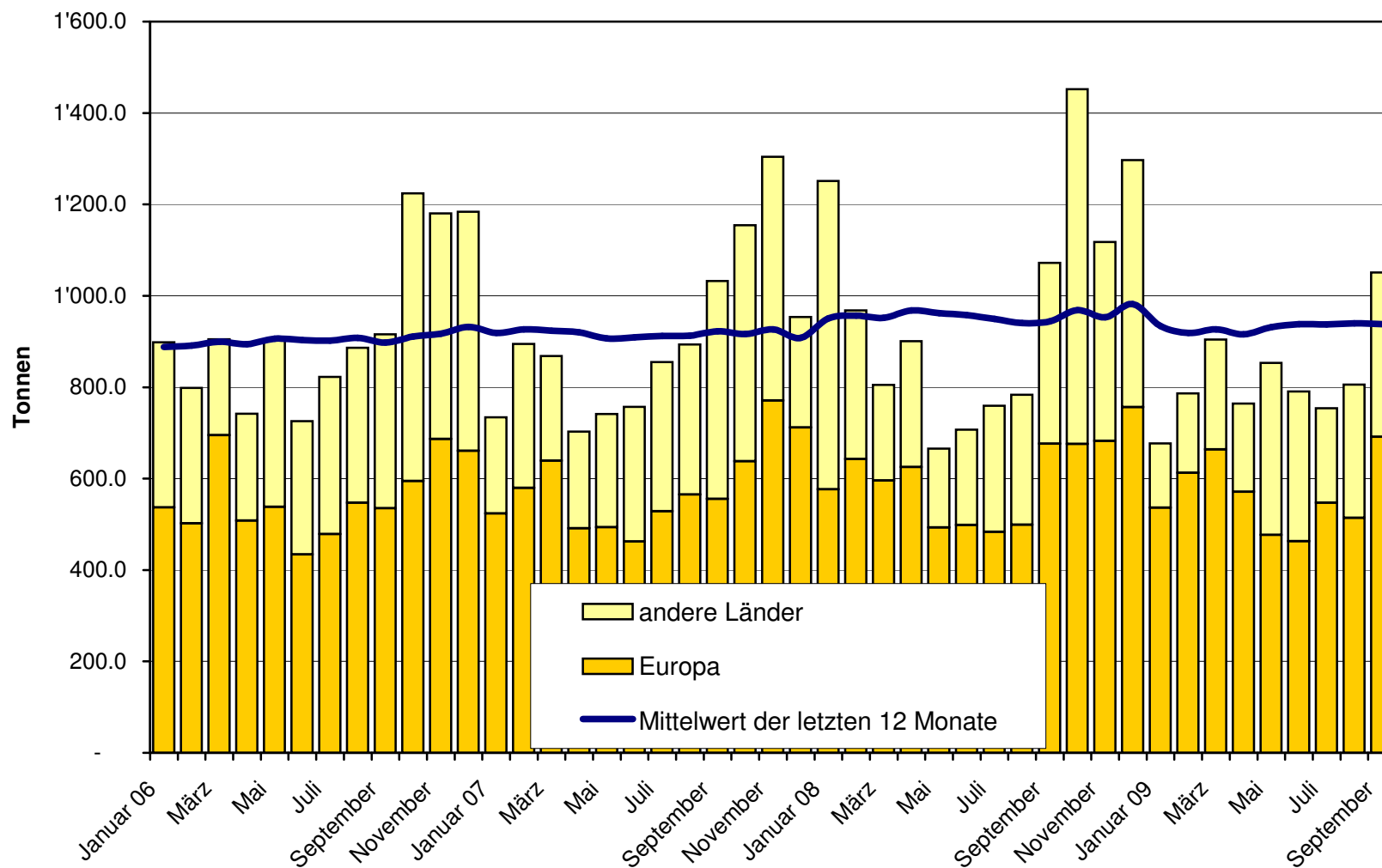
Total Käseexport (inkl. Fertigfondue und Schmelzkäse) ab 2006 Mittelwert der letzten 12 Monate



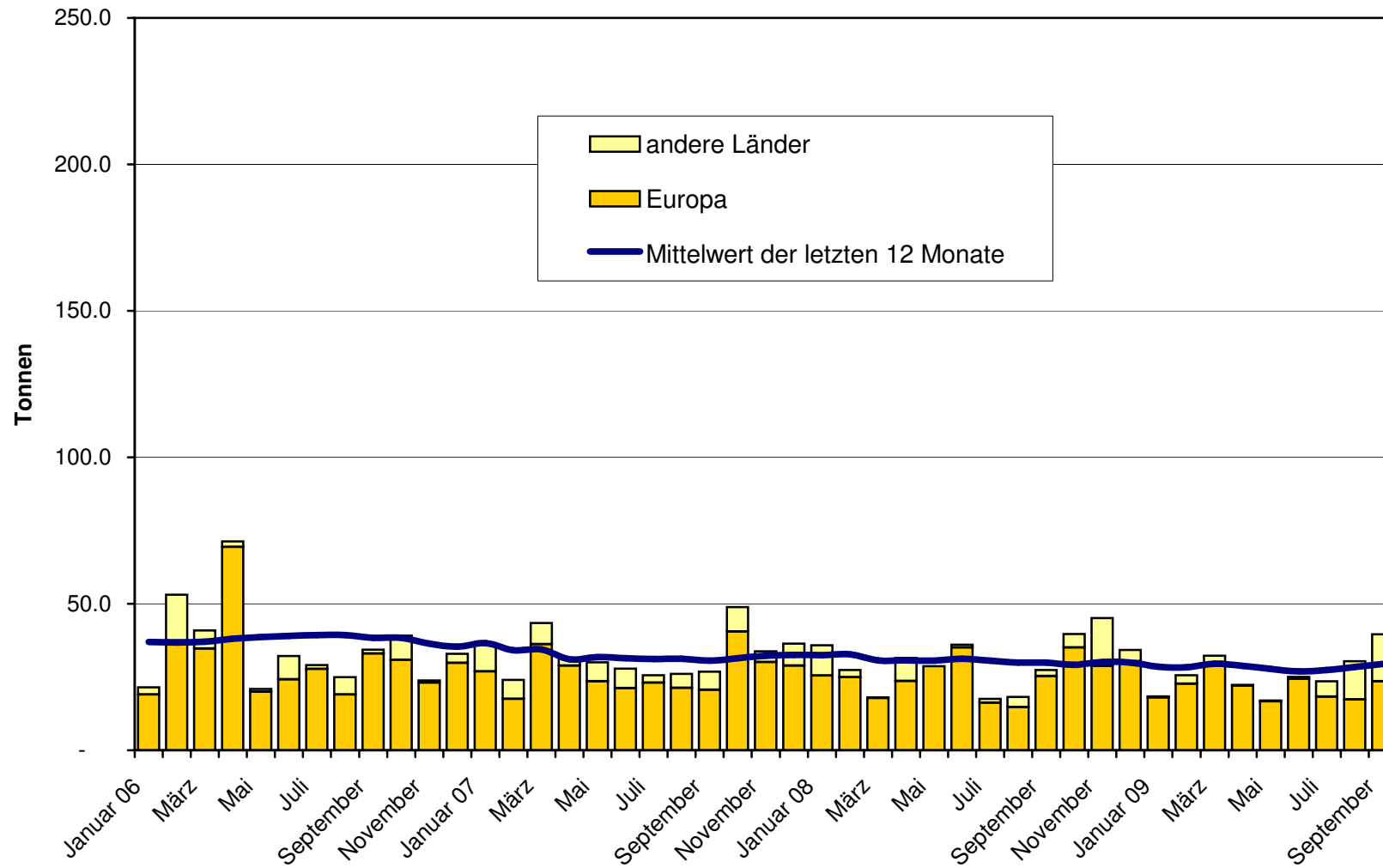
Emmentaler Export ab 2006 Mittelwert der letzten 12 Monate



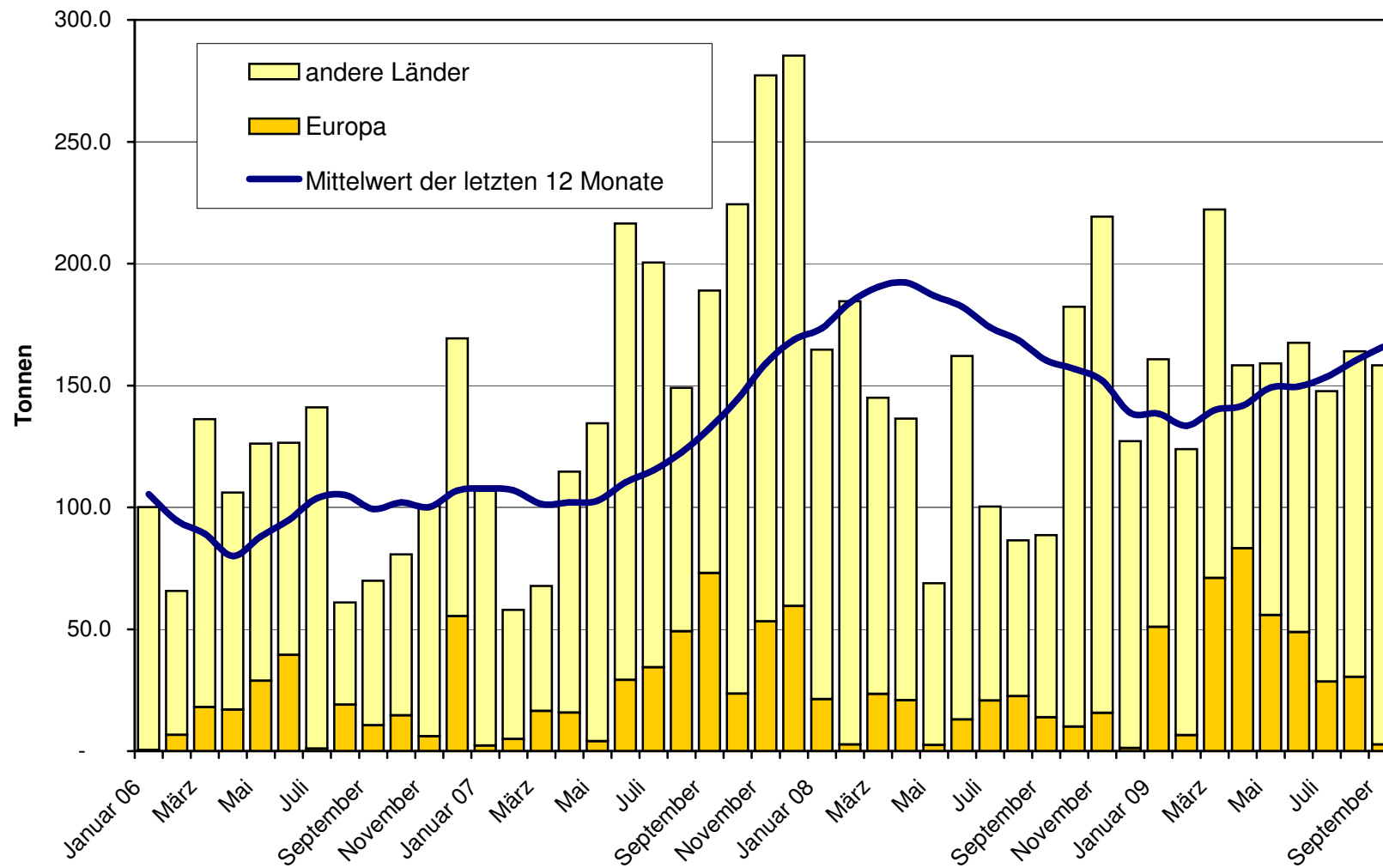
Gruyère Export ab 2006 Mittelwert der letzten 12 Monate



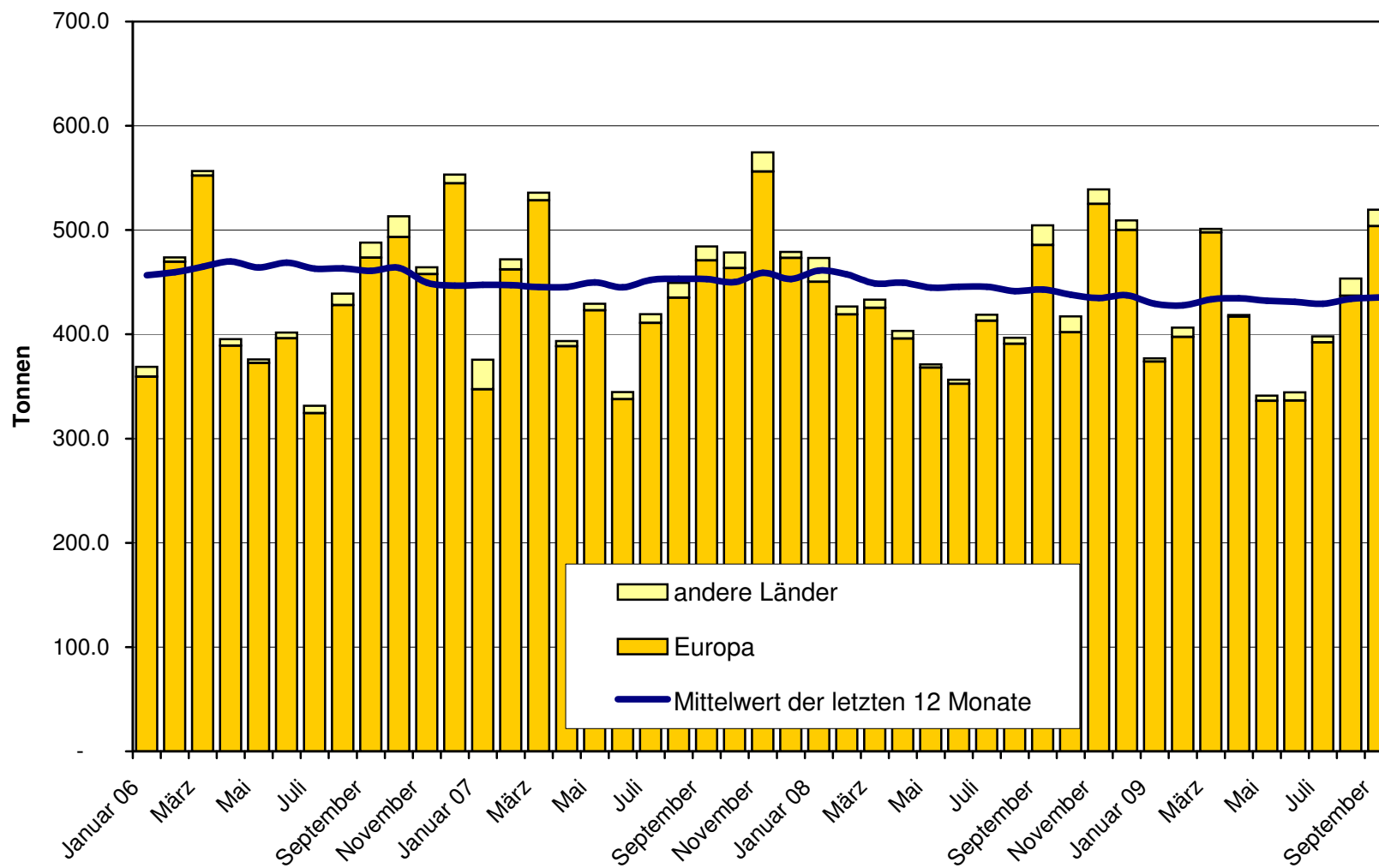
Sbrinz Export ab 2006
Mittelwert der letzten 12 Monate



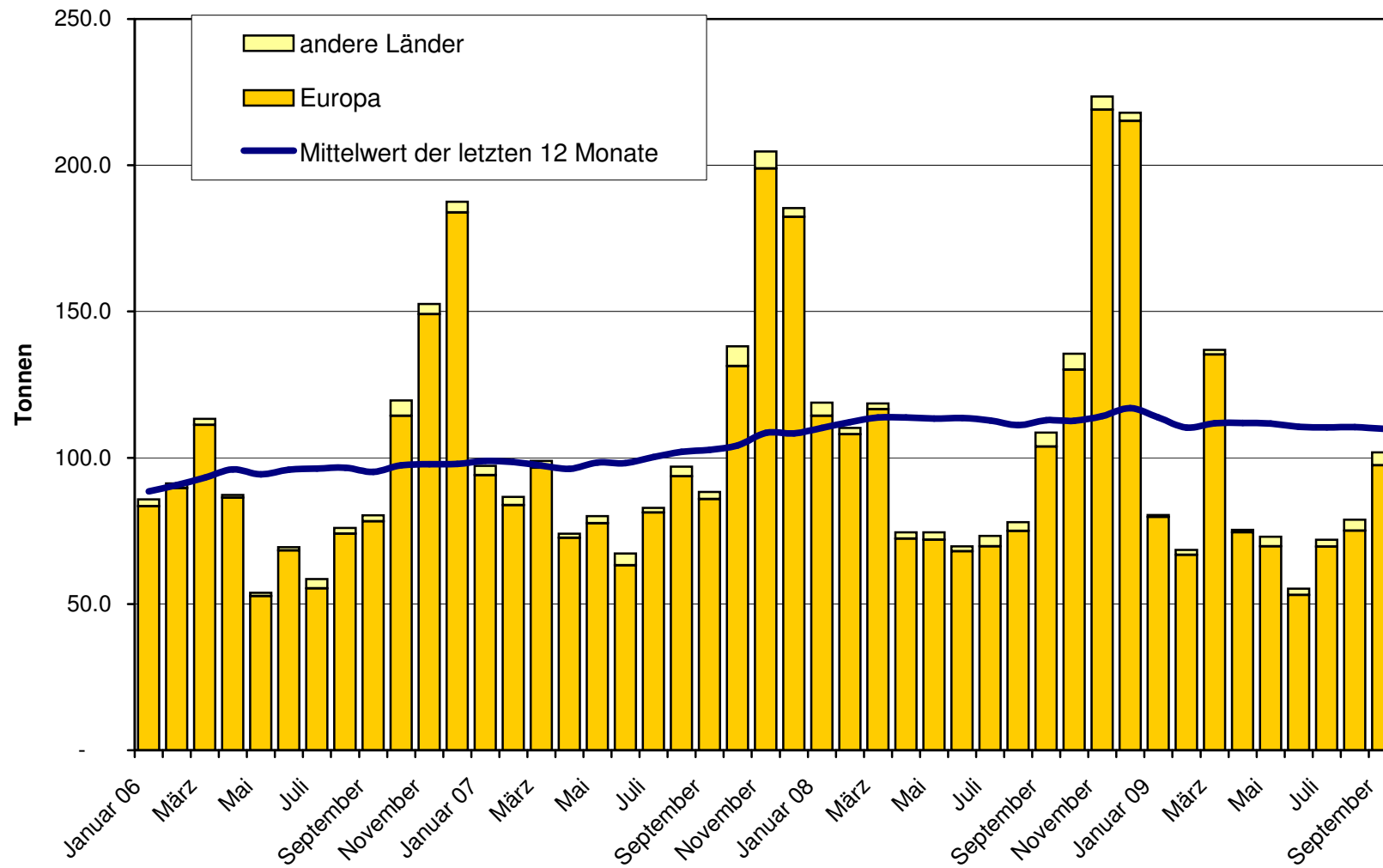
Switzerland Swiss Export ab 2006
Mittelwert der letzten 12 Monate



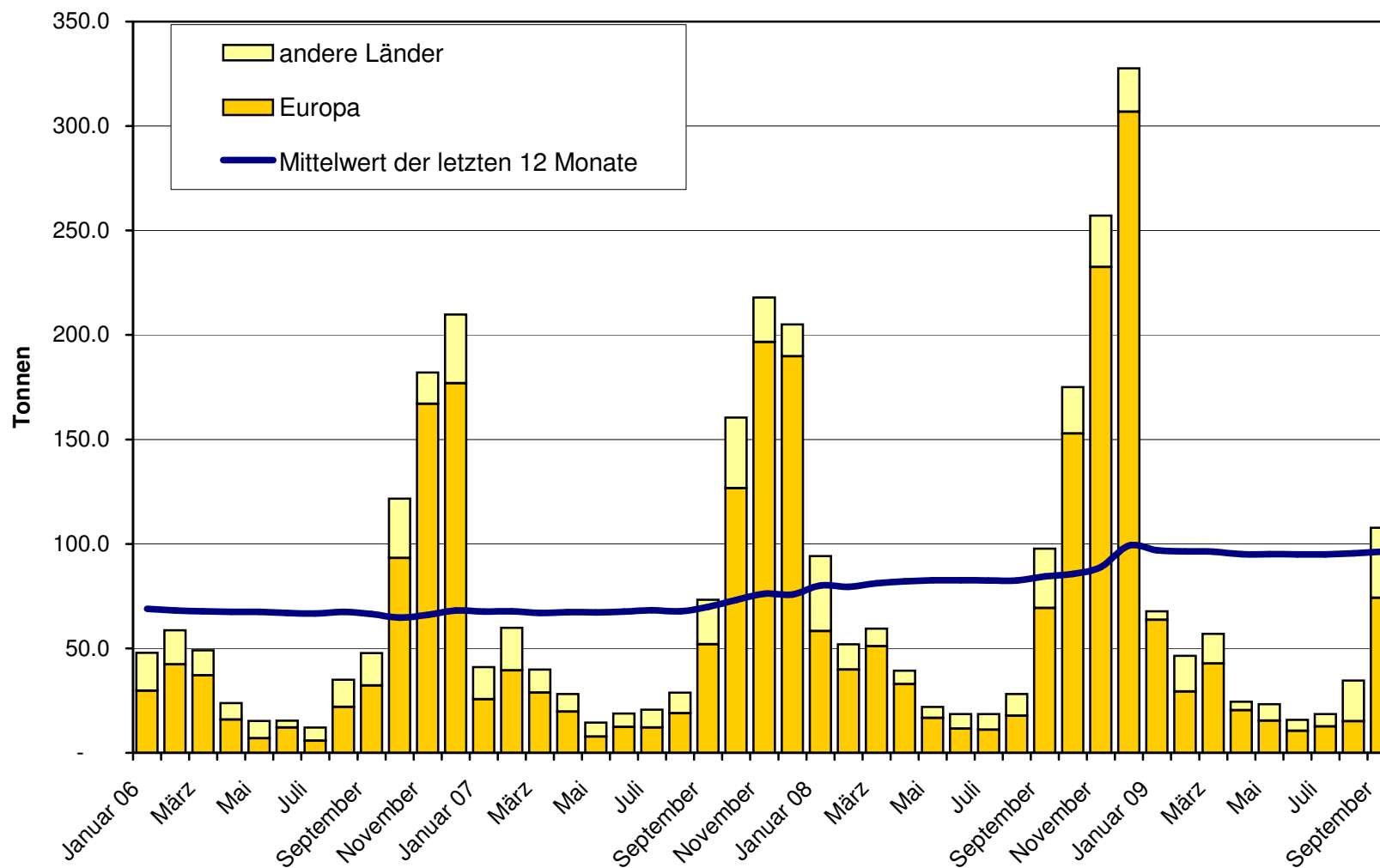
Appenzeller Käse Export ab 2006 Mittelwert der letzten 12 Monate



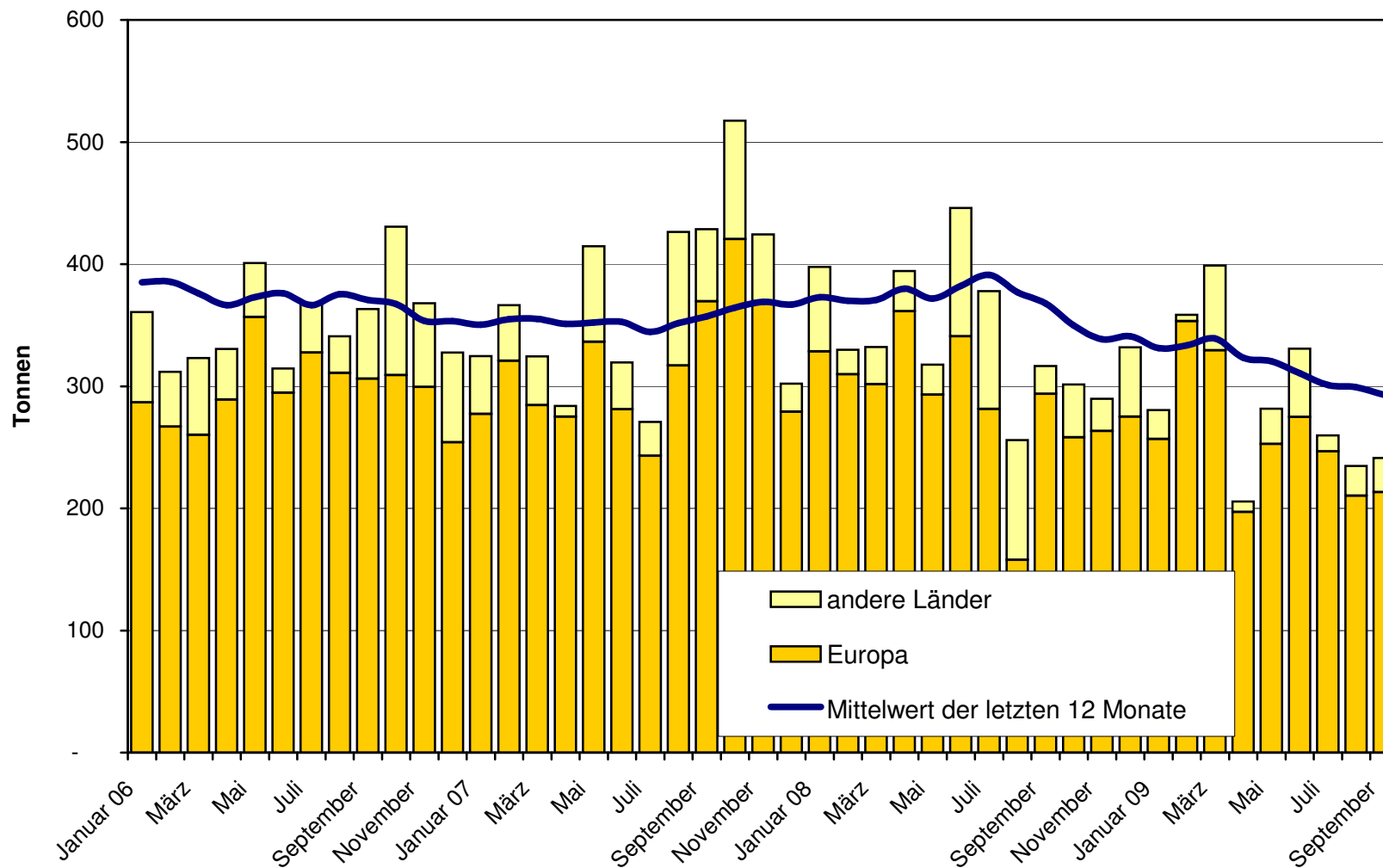
Tête de Moine Export ab 2006
Mittelwert der letzten 12 Monate



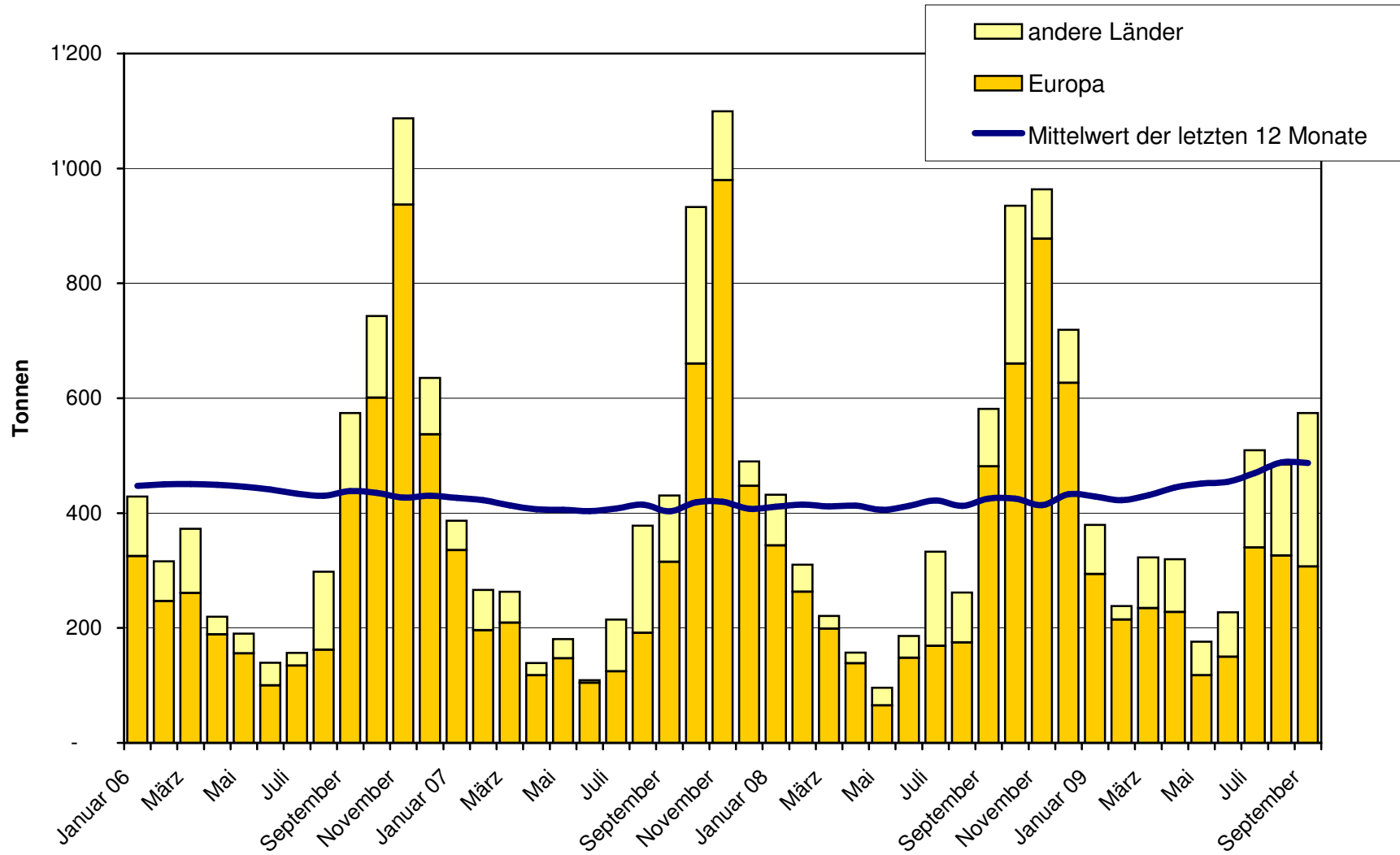
Raclette Suisse Export ab 2006
Mittelwert der letzten 12 Monate



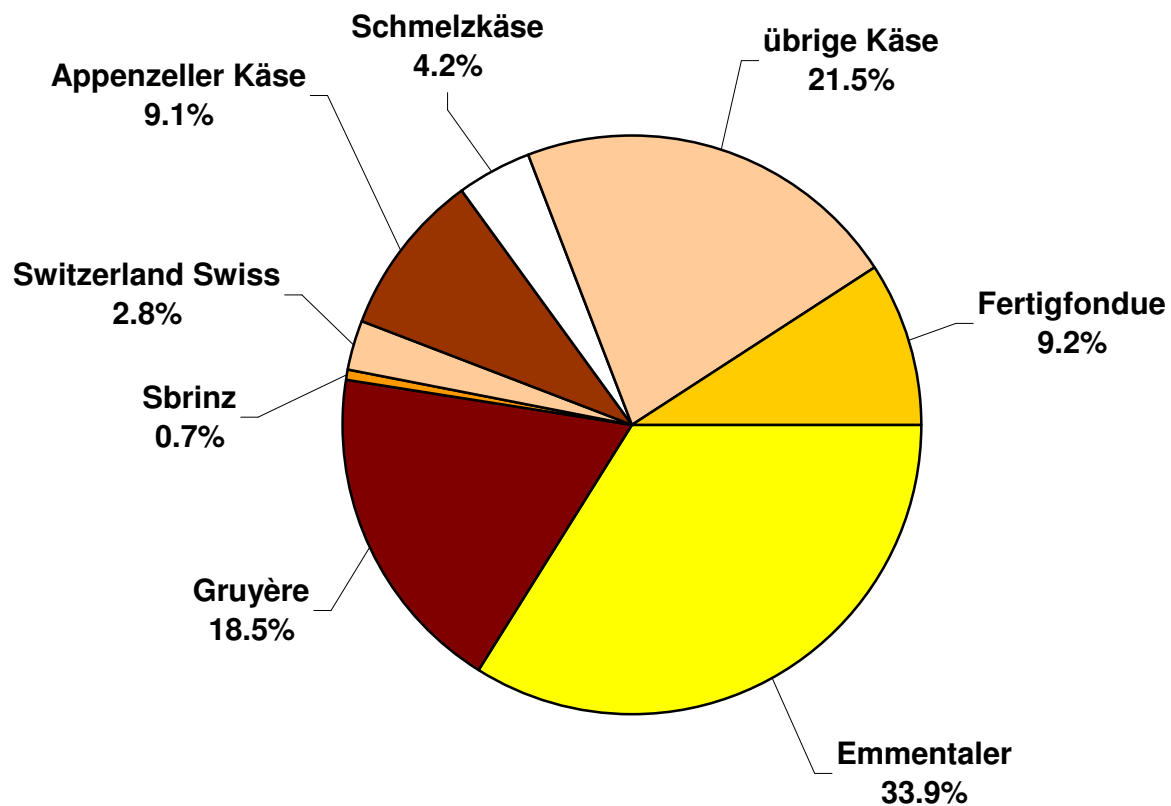
Schmelzkäse Export ab 2006 Mittelwert der letzten 12 Monate



**Fertigfondue Export ab 2006
Mittelwert der letzten 12 Monate**



Anteil Käseexporte je Sorte, September 2009 Total 5'681 Tonnen



Käseimport nach Produkten/Gruppen

| Käsesorte / Kategorie | Monatliche Importe | | Differenz zum Vorjahres-Monat | | Kumulierte Importe | | Differenz zur Vorjahresperiode | |
|---|--------------------------|--------------------------|-------------------------------|-------------|----------------------------|----------------------------|--------------------------------|--------------|
| | September 2008 Tonnen | September 2009 Tonnen | Tonnen | (%) | Jan. - Sep. 2008 Tonnen | Jan. - Sep. 2009 Tonnen | Tonnen | (%) |
| Mascarpone, Ricotta Romana | 98.4 | 95.2 | -3.1 | -3.2 | 908.0 | 831.2 | -76.8 | -8.5 |
| Mozzarella | 191.7 | 211.7 | 19.9 | 10.4 | 2'491.4 | 2'220.6 | -270.9 | -10.9 |
| Frischkäse, andere | 850.9 | 922.4 | 71.4 | 8.4 | 7'074.4 | 8'518.6 | 1'444.3 | 20.4 |
| Frischkäse total | 1'141.1 | 1'229.3 | 88.2 | 7.7 | 10'473.7 | 11'570.4 | 1'096.6 | 10.5 |
| Danablu, Gorgonzola, Roquefort | 15.0 | 16.0 | 1.0 | 7.0 | 149.2 | 142.5 | -6.7 | -4.5 |
| Weisschimmelkäse | 160.8 | 163.0 | 2.2 | 1.4 | 1'431.5 | 1'401.4 | -30.1 | -2.1 |
| Blau-, Grünschimmelkäse | | | | | | | | |
| Brie, Camembert, Italico | 140.0 | 190.7 | 50.7 | 36.2 | 1'140.4 | 1'422.8 | 282.3 | 24.8 |
| Weichkäse, andere | 536.5 | 567.5 | 31.0 | 5.8 | 4'518.6 | 4'839.0 | 320.4 | 7.1 |
| Weichkäse total | 852.3 | 937.2 | 84.9 | 10.0 | 7'239.8 | 7'805.7 | 565.9 | 7.8 |
| Halbhartkäse mit Schimmelbildung | 3.2 | 2.5 | -0.7 | -20.5 | 31.2 | 22.5 | -8.7 | -27.8 |
| Caciocavallo, Fontina, Brà, u.a. | 63.8 | 45.0 | -18.8 | -29.4 | 593.5 | 570.3 | -23.2 | -3.9 |
| Tilsiter | 13.0 | 2.3 | -10.6 | -82.0 | 140.7 | 73.4 | -67.3 | -47.8 |
| Halbhartkäse, andere | 579.4 | 569.6 | -9.8 | -1.7 | 4'478.6 | 4'518.3 | 39.6 | 0.9 |
| Halbhartkäse, gerieben, pulverisiert | 0.0 | 5.0 | 5.0 | 49'920.0 | 0.4 | 45.2 | 44.8 | 11'391.9 |
| Halbhartkäse total | 659.4 | 624.5 | -34.9 | -5.3 | 5'244.4 | 5'229.6 | -14.7 | -0.3 |
| Kräuterkäse (Schabziger) | 0.1 | 0.0 | -0.1 | -100.0 | 0.5 | 33.9 | 33.4 | 6'453.0 |
| Hartkäse mit Schimmelbildung | 0.0 | 0.0 | 0.0 | | 3.8 | 0.4 | -3.4 | -89.3 |
| Caciocavallo, Fontina, Brà, u.a. | 9.7 | 12.4 | 2.8 | 28.5 | 178.4 | 140.1 | -38.3 | -21.5 |
| Emmentaler | 49.3 | 26.2 | -23.1 | -46.9 | 329.5 | 287.5 | -42.0 | -12.7 |
| Hartkäse, andere | 209.3 | 222.1 | 12.8 | 6.1 | 1'870.2 | 1'583.8 | -286.5 | -15.3 |
| Hartkäse, gerieben, pulverisiert | 30.8 | 34.5 | 3.8 | 12.2 | 303.1 | 295.9 | -7.3 | -2.4 |
| Hartkäse total | 299.1 | 295.2 | -3.9 | -1.3 | 2'685.5 | 2'341.5 | -344.0 | -12.8 |
| Grana/Parmiggiano | 491.3 | 451.9 | -39.4 | -8.0 | 3'622.7 | 3'845.4 | 222.7 | 6.1 |
| Extra Hartkäse total | 491.3 | 451.9 | -39.4 | -8.0 | 3'622.7 | 3'845.4 | 222.7 | 6.1 |
| Total aller Sorten exkl. Schmelzkäse | 3'443.1 | 3'538.1 | 95.0 | 2.8 | 29'266.1 | 30'792.6 | 1'526.5 | 5.2 |
| Schmelzkäse total | 169.4 | 285.5 | 116.0 | 68.5 | 1'501.2 | 2'071.1 | 569.9 | 38.0 |

Quelle: OZD

Käseimport nach Ländern

September 2009

| | <div style="display: flex; justify-content: space-between;"> <div style="writing-mode: vertical-rl; transform: rotate(180deg);">Mascarpone, Ricotta Romana</div> <div style="writing-mode: vertical-rl; transform: rotate(180deg);">Mozzarella</div> <div style="writing-mode: vertical-rl; transform: rotate(180deg);">Andere Frischkäse</div> <div style="writing-mode: vertical-rl; transform: rotate(180deg);">TOTAL Frischkäse</div> <div style="writing-mode: vertical-rl; transform: rotate(180deg);">Danablu, Gorgonzola, Roquefort</div> <div style="writing-mode: vertical-rl; transform: rotate(180deg);">Brie, Camembert, Reblochon</div> <div style="writing-mode: vertical-rl; transform: rotate(180deg);">Andere Weichkäse</div> <div style="writing-mode: vertical-rl; transform: rotate(180deg);">TOTAL Weichkäse</div> <div style="writing-mode: vertical-rl; transform: rotate(180deg);">Kräuterkäse</div> <div style="writing-mode: vertical-rl; transform: rotate(180deg);">Hart- und Halbhärtkäse</div> <div style="writing-mode: vertical-rl; transform: rotate(180deg);">Übrige Käse</div> </div> | | | | | | | | | | | TOTAL | |
|----------------------------|---|--------|--------|--------|--------|--------|--------|--------|--------|--------|--------|--------|--------|
| Land | Tonnen | Tonnen | Tonnen | Tonnen | Tonnen | Tonnen | Tonnen | Tonnen | Tonnen | Tonnen | Tonnen | Tonnen | |
| EUROPA | | | | | | | | | | | | | |
| Deutschland | | 15.8 | 319.3 | 335.1 | 0.6 | | 133.2 | 133.9 | | 207.1 | | 113.7 | 789.8 |
| Frankreich | | 6.2 | 213.5 | 219.8 | 10.6 | 181.1 | 338.2 | 530.0 | | 229.5 | | 98.0 | 1077.2 |
| Italien | 93.5 | 189.1 | 263.5 | 546.1 | 4.8 | | 172.3 | 177.1 | | 722.9 | | 35.6 | 1481.8 |
| Niederlande | | | 0.2 | 0.2 | | | 0.3 | 0.3 | | 59.0 | | | 59.5 |
| Belgien | | | 20.0 | 20.0 | | | 10.1 | 10.1 | | 14.5 | | | 44.6 |
| Luxemburg | | | | 0.0 | | | | 0.0 | | | | | 0.0 |
| Oesterreich | 1.7 | 0.6 | 15.8 | 18.2 | | | 7.0 | 7.0 | | 48.9 | | 37.8 | 111.9 |
| Grossbritannien | | | | 0.0 | | | 0.5 | 0.5 | | 10.0 | | | 10.5 |
| Dänemark | | | 88.7 | 88.7 | 0.0 | | 24.3 | 24.3 | | 18.9 | | | 131.9 |
| Norwegen | | | | 0.0 | | | | 0.0 | | | | | 0.0 |
| Schweden | | | | 0.0 | | | | 0.0 | | 0.7 | | 0.3 | 1.0 |
| Portugal | | | 0.0 | 0.0 | | | 0.5 | 0.5 | | 18.4 | | | 18.9 |
| Spanien | | | | 0.0 | | | 1.8 | 1.8 | | 19.3 | | | 21.1 |
| Griechenland | | | 1.2 | 1.2 | | | 43.8 | 43.8 | | | | | 45.0 |
| Europa übrige | | | | 0.0 | | | 8.1 | 8.1 | | 22.2 | | | 30.2 |
| TOTAL EUROPA | 95.2 | 211.7 | 922.3 | 1229.2 | 16.0 | 181.1 | 740.0 | 937.2 | 0.0 | 1371.5 | | 285.5 | 3823.4 |
| Andere Länder | | | | | | | | | | | | | 0.0 |
| Kanada | | | | 0.0 | | | | 0.0 | | | | | 0.0 |
| USA | | | | 0.0 | | | | 0.0 | | | | | 0.0 |
| Nordamerika übrige | | | | 0.0 | | | | 0.0 | | | | | 0.0 |
| Lateinamerika | | | | 0.0 | | | | 0.0 | | 0.0 | | | 0.0 |
| Afrika | | | | 0.0 | | | | 0.0 | | | | | 0.0 |
| Asien | | | 0.1 | 0.1 | | | | 0.0 | | | | | 0.1 |
| Australien | | | | 0.0 | | | | 0.0 | | | | | 0.0 |
| TOTAL ANDERE LÄNDER | 0.0 | 0.0 | 0.1 | 0.1 | 0.0 | 0.0 | 0.0 | 0.0 | 0.0 | 0.0 | | 0.0 | 0.1 |
| TOTAL | 95.2 | 211.7 | 922.4 | 1229.3 | 16.0 | 181.1 | 740.0 | 937.2 | 0.0 | 1371.6 | | 285.5 | 3823.5 |

Quelle: OZD

Käseimport nach Ländern

September 2008

| Land | Tonnen | Tonnen | Tonnen | Tonnen | Tonnen | Tonnen | Tonnen | Tonnen | Tonnen | Tonnen | Tonnen | TOTAL | |
|----------------------------|-------------|----------------------------|--------------|-------------------|------------------|--------------------------------|----------------------------|------------------|-----------------|---------------|------------------------|-------------|---------------|
| | | Mascarpone, Ricotta Romana | Mozzarella | Andere Frischkäse | TOTAL Frischkäse | Danablu, Gorgonzola, Roquefort | Brie, Camembert, Reblochon | Andere Weichkäse | TOTAL Weichkäse | Kräuterkäse | Hart- und Halbhartkäse | Übrige Käse | |
| EUROPA | | | | | | | | | | | | | |
| Deutschland | 4.1 | 4.3 | 317.8 | 326.2 | 1.1 | 157.0 | 158.1 | 194.7 | 3.4 | | | | 682.3 |
| Frankreich | | 0.1 | 190.0 | 190.1 | 11.1 | 119.8 | 286.5 | 417.4 | 0.1 | 229.8 | 88.9 | | 926.3 |
| Italien | 92.1 | 182.7 | 229.3 | 504.1 | 2.8 | | 160.3 | 163.1 | | 807.9 | 34.1 | | 1509.1 |
| Niederlande | | | 1.291 | 1.3 | | | 8.3 | 8.3 | | 73.7 | | | 83.3 |
| Belgien | | | | 0.0 | | | | 0.0 | | 0.1 | | | 0.1 |
| Luxemburg | | | | 0.0 | | | | 0.0 | | | | | 0.0 |
| Oesterreich | | 0.273 | 13.1 | 13.3 | | | 5.1 | 5.1 | | 38.6 | 42.2 | | 99.2 |
| Grossbritannien | | | | 0.0 | | | 0.0 | 0.0 | | 10.0 | | | 10.0 |
| Dänemark | | | 92.083 | 92.1 | | | 30.0 | 30.0 | | 14.3 | | | 136.3 |
| Norwegen | | | | 0.0 | | | | 0.0 | | | | | 0.0 |
| Schweden | | | | 0.0 | | | | 0.0 | | 1.5 | 0.3 | | 1.8 |
| Portugal | | | | 0.0 | | | 4.1 | 4.1 | | 9.7 | | | 13.8 |
| Spanien | | | | 0.0 | | | 1.2 | 1.2 | | 24.8 | | | 26.0 |
| Griechenland | | | 0.286 | 0.3 | | | 57.8 | 57.8 | | 0.1 | | | 58.1 |
| Europa übrige | | | 1.1 | 1.1 | | | | 0.0 | | 41.3 | | | 42.4 |
| TOTAL EUROPA | 96.2 | 187.4 | 845.0 | 1128.5 | 15.0 | 119.8 | 710.3 | 845.0 | 0.1 | 1446.2 | 168.8 | | 3588.7 |
| Andere Länder | | | | | | | | | | | | | 0.0 |
| Kanada | | | | 0.0 | | | | 0.0 | | | | | 0.0 |
| USA | | | | 0.0 | | | | 0.0 | | | | | 0.0 |
| Nordamerika übrige | | | | 0.0 | | | | 0.0 | | | | | 0.0 |
| Lateinamerika | | | | 0.0 | | | | 0.0 | | | | | 0.0 |
| Afrika | | | | 0.0 | | | | 0.0 | | | | | 0.0 |
| Asien | | | | 0.0 | | | | 0.0 | | | | | 0.0 |
| Australien | | | | 0.0 | | | | 0.0 | | | | | 0.0 |
| TOTAL ANDERE LÄNDER | 0.0 | 0.0 | 0.0 | 0.0 | 0.0 | 0.0 | 0.0 | 0.0 | 0.0 | 0.0 | 0.0 | | 0.0 |
| TOTAL | 96.2 | 187.4 | 845.0 | 1128.5 | 15.0 | 119.8 | 710.3 | 845.0 | 0.1 | 1446.2 | 168.8 | | 3588.7 |

Quelle: OZD

Käseimport nach Ländern, kumuliert

Januar bis September 2009

| | Mascarpone, Ricotta Romana | Mozzarella | Andere Frischkäse | TOTAL Frischkäse | Danablu, Gorgonzola, Roquefort | Brie, Camembert, Reblochon | Andere Weichkäse | TOTAL Weichkäse | Kräuterkäse | Hart- und Halbhartkäse | Übrige Käse | TOTAL |
|----------------------------|----------------------------|------------|-------------------|------------------|--------------------------------|----------------------------|------------------|-----------------|-------------|------------------------|-------------|----------|
| Land | Tonnen | Tonnen | Tonnen | Tonnen | Tonnen | Tonnen | Tonnen | Tonnen | Tonnen | Tonnen | Tonnen | |
| EUROPA | | | | | | | | | | | | |
| Deutschland | 0.0 | 87.8 | 2803.0 | 2890.8 | 6.7 | 0.0 | 1354.5 | 1361.2 | 0.0 | 1566.8 | 632.6 | 6451.4 |
| Frankreich | 0.2 | 6.6 | 2146.3 | 2153.0 | 106.0 | 1300.6 | 2775.6 | 4182.2 | 0.0 | 1819.5 | 814.6 | 8969.4 |
| Italien | 821.2 | 2104.4 | 2408.5 | 5334.2 | 28.1 | 0.0 | 1419.9 | 1448.0 | 33.9 | 6167.9 | 269.9 | 13253.8 |
| Niederlande | 0.0 | 0.0 | 17.308 | 17.3 | 0.0 | 0.0 | 31.0 | 31.0 | 0.0 | 510.9 | 0.0 | 559.3 |
| Belgien | 0.0 | 0.0 | 59.3 | 59.3 | 0.0 | 0.0 | 21.9 | 21.9 | 0.0 | 108.9 | 0.0 | 190.1 |
| Luxemburg | 0.0 | 0.0 | 0.0 | 0.0 | 0.0 | 0.0 | 0.0 | 0.0 | 0.0 | 0.0 | 0.0 | 0.0 |
| Oesterreich | 9.7 | 11.481 | 128.3 | 149.5 | 0.0 | 0.0 | 55.8 | 55.8 | 0.0 | 450.0 | 335.5 | 990.9 |
| Grossbritannien | 0.0 | 0.0 | 164.0 | 164.0 | 0.0 | 0.0 | 5.3 | 5.3 | 0.0 | 91.8 | 0.0 | 261.0 |
| Dänemark | 0.0 | 0.2 | 749.768 | 749.9 | 1.7 | 0.0 | 190.6 | 192.4 | 0.0 | 127.1 | 0.0 | 1069.4 |
| Norwegen | 0.0 | 0.0 | 0.0 | 0.0 | 0.0 | 0.0 | 0.0 | 0.0 | 0.0 | 0.0 | 0.0 | 0.0 |
| Schweden | 0.0 | 0.0 | 0.0 | 0.0 | 0.0 | 0.0 | 0.7 | 0.7 | 0.0 | 9.2 | 2.1 | 11.9 |
| Portugal | 0.0 | 0.0 | 0.0 | 0.0 | 0.0 | 0.0 | 9.7 | 9.7 | 0.0 | 92.8 | 0.0 | 102.5 |
| Spanien | 0.0 | 0.0 | 1.0 | 1.0 | 0.0 | 0.0 | 9.6 | 9.6 | 0.0 | 194.3 | 0.0 | 204.9 |
| Griechenland | 0.0 | 0.0 | 6.587 | 6.6 | 0.0 | 0.0 | 459.9 | 459.9 | 0.0 | 2.2 | 0.1 | 468.8 |
| Europa übrige | 0.0 | 0.7 | 0.1 | 0.8 | 0.0 | 0.0 | 11.2 | 11.2 | 0.0 | 190.5 | 0.0 | 202.6 |
| TOTAL EUROPA | 831.2 | 2211.2 | 8484.1 | 11526.4 | 142.5 | 1300.6 | 6345.8 | 7788.9 | 33.9 | 11332.0 | 2054.9 | 32736.1 |
| Andere Länder | 0.0 | 0.0 | 0.0 | 0.0 | 0.0 | 0.0 | 0.0 | 0.0 | 0.0 | 0.0 | 0.0 | 0.0 |
| Kanada | 0.0 | 0.0 | 0.0 | 0.0 | 0.0 | 0.0 | 0.0 | 0.0 | 0.0 | 0.0 | 0.0 | 0.0 |
| USA | 0.0 | 0.0 | 0.0 | 0.0 | 0.0 | 0.0 | 0.0 | 0.0 | 0.0 | 0.2 | 0.0 | 0.2 |
| Nordamerika übrige | 0.0 | 0.0 | 0.0 | 0.0 | 0.0 | 0.0 | 0.0 | 0.0 | 0.0 | 0.0 | 0.0 | 0.0 |
| Lateinamerika | 0.0 | 0.0 | 0.0 | 0.0 | 0.0 | 0.0 | 0.0 | 0.0 | 0.0 | 2.8 | 0.0 | 2.8 |
| Afrika | 0.0 | 0.0 | 0.0 | 0.0 | 0.0 | 0.0 | 0.0 | 0.0 | 0.0 | 0.0 | 0.0 | 0.0 |
| Asien | 0.0 | 0.0 | 0.1 | 0.1 | 0.0 | 0.0 | 0.6 | 0.6 | 0.0 | 0.0 | 0.0 | 0.7 |
| Australien | 0.0 | 0.0 | 0.0 | 0.0 | 0.0 | 0.0 | 0.0 | 0.0 | 0.0 | 0.0 | 0.0 | 0.0 |
| TOTAL ANDERE LÄNDER | 0.0 | 0.0 | 0.1 | 0.1 | 0.0 | 0.0 | 0.6 | 0.6 | 0.0 | 3.0 | 0.0 | 3.7 |
| TOTAL | 831.2 | 2'211.2 | 8'484.2 | 11'526.5 | 142.5 | 1'300.6 | 6'346.4 | 7'789.6 | 33.9 | 11'335.0 | 2'054.9 | 32'739.8 |

Quelle: OZD

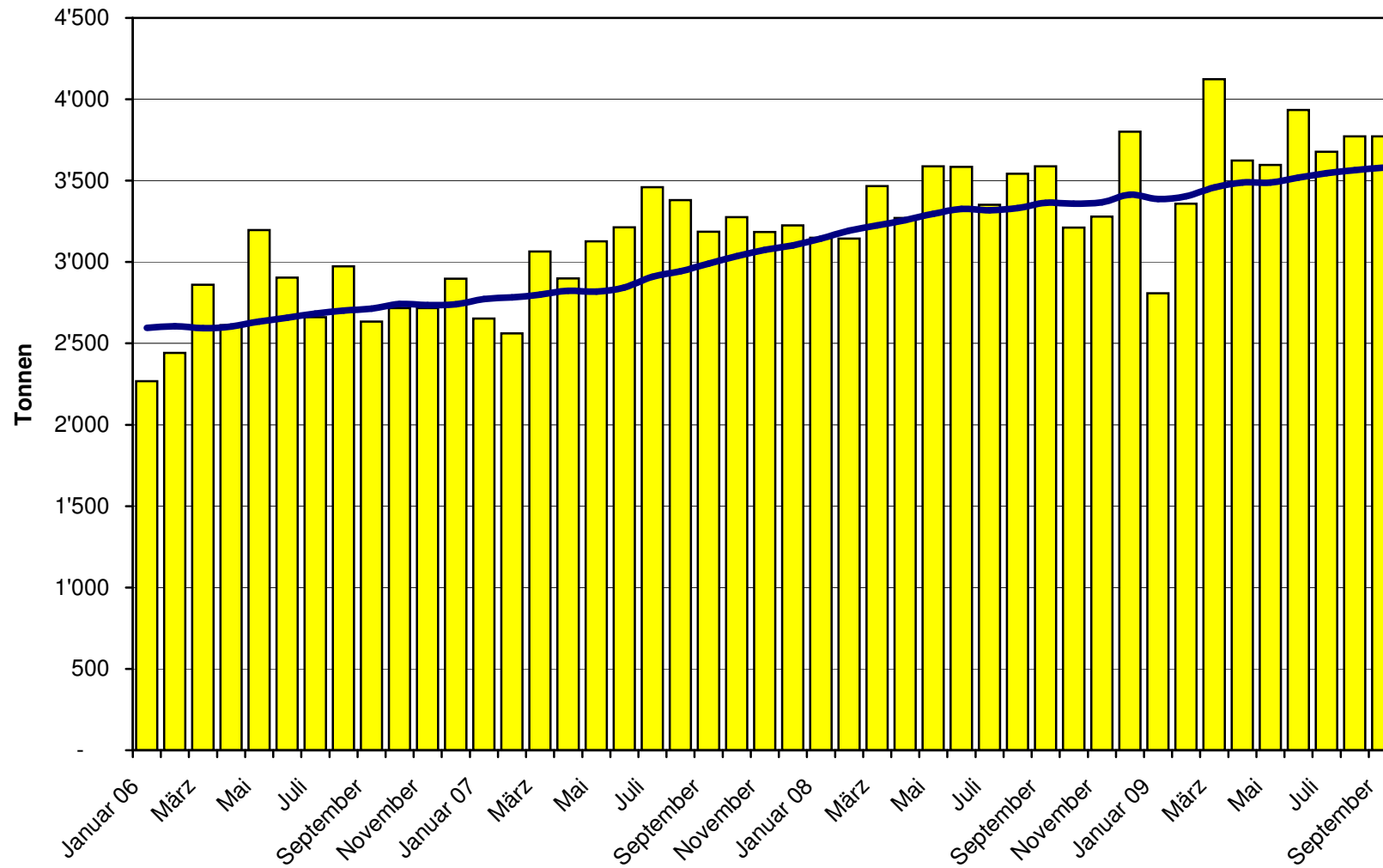
Käseimport nach Ländern, kumuliert

Januar bis September 2008

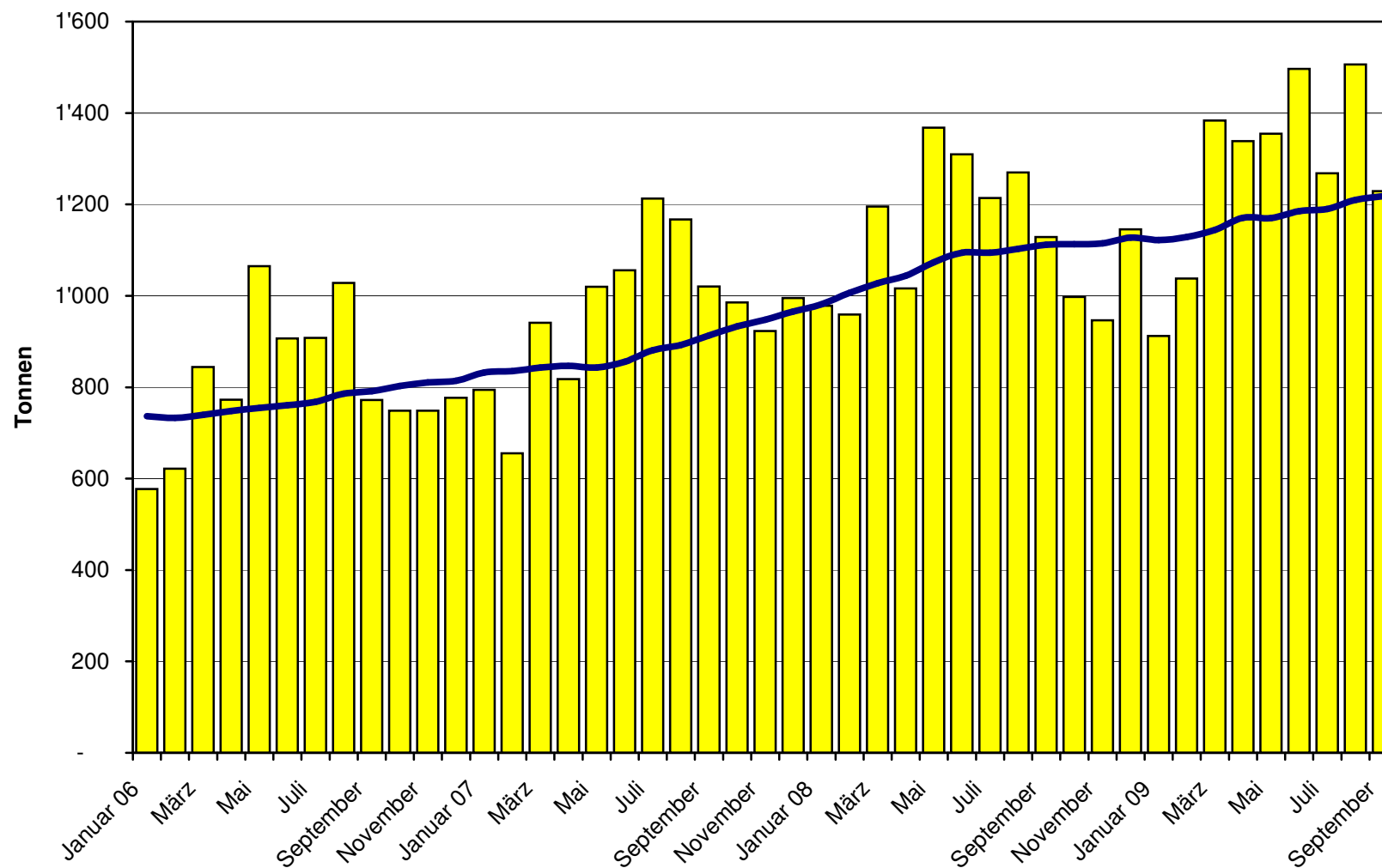
| Land | Käseimport nach Ländern, kumuliert | | | | | | | | | | | | TOTAL |
|----------------------------|------------------------------------|------------|-------------------|------------------|--------------------------------|----------------------------|------------------|-----------------|-------------|------------------------|-------------|--------|----------|
| | Mascarpone, Ricotta Romana | Mozzarella | Andere Frischkäse | TOTAL Frischkäse | Danablu, Gorgonzola, Roquefort | Brie, Camembert, Reblochon | Andere Weichkäse | TOTAL Weichkäse | Kräuterkäse | Hart- und Halbhärtkäse | Übrige Käse | | |
| Land | Tonnen | Tonnen | Tonnen | Tonnen | Tonnen | Tonnen | Tonnen | Tonnen | Tonnen | Tonnen | Tonnen | Tonnen | |
| EUROPA | | | | | | | | | | | | | |
| Deutschland | 35.1 | 226.5 | 2'266.5 | 2'528.0 | 13.4 | 0.0 | 1'248.2 | 1'261.7 | 0.2 | 1'468.5 | 88.9 | | 5'347.3 |
| Frankreich | 0.0 | 1.2 | 1'827.0 | 1'828.2 | 100.1 | 1'021.9 | 2'685.7 | 3'807.7 | 0.2 | 1'933.1 | 775.0 | | 8'344.1 |
| Italien | 865.9 | 2'248.8 | 2'140.8 | 5'255.5 | 33.1 | 0.0 | 1'430.0 | 1'463.1 | 0.2 | 6'260.7 | 306.2 | | 13'285.6 |
| Niederlande | 0.0 | 0.4 | 4.0 | 4.3 | 0.0 | 0.0 | 23.7 | 23.7 | 0.0 | 555.4 | 0.0 | | 583.4 |
| Belgien | 0.0 | 0.0 | 0.0 | 0.0 | 0.0 | 0.0 | 0.0 | 0.0 | 0.0 | 49.6 | 2.5 | | 52.2 |
| Luxemburg | 0.0 | 0.0 | 0.0 | 0.0 | 0.0 | 0.0 | 0.0 | 0.0 | 0.0 | 0.0 | 0.0 | | 0.0 |
| Oesterreich | 0.0 | 8.8 | 113.4 | 122.2 | 0.0 | 0.0 | 34.4 | 34.4 | 0.0 | 289.9 | 319.8 | | 766.3 |
| Grossbritannien | 0.0 | 0.0 | 0.8 | 0.8 | 0.0 | 0.0 | 0.1 | 0.1 | 0.0 | 81.6 | 0.0 | | 82.4 |
| Dänemark | 0.0 | 0.0 | 696.1 | 696.1 | 2.6 | 0.0 | 204.9 | 207.4 | 0.0 | 125.0 | 0.0 | | 1'028.6 |
| Norwegen | 0.0 | 0.0 | 0.0 | 0.0 | 0.0 | 0.0 | 0.0 | 0.0 | 0.0 | 0.0 | 0.0 | | 0.0 |
| Schweden | 0.0 | 0.0 | 0.0 | 0.0 | 0.0 | 0.0 | 1.2 | 1.2 | 0.0 | 10.8 | 2.3 | | 14.2 |
| Portugal | 0.0 | 0.0 | 0.0 | 0.0 | 0.0 | 0.0 | 14.4 | 14.4 | 0.0 | 72.3 | 0.0 | | 86.7 |
| Spanien | 0.0 | 0.0 | 0.1 | 0.1 | 0.0 | 0.0 | 4.3 | 4.3 | 0.0 | 203.5 | 0.0 | | 207.9 |
| Griechenland | 0.0 | 0.0 | 1.1 | 1.1 | 0.0 | 0.0 | 398.8 | 398.8 | 0.0 | 2.8 | 0.0 | | 402.8 |
| Europa übrige | 0.0 | 1.3 | 1.1 | 2.4 | 13.4 | 0.0 | 0.9 | 14.3 | 0.0 | 462.2 | 6.0 | | 484.9 |
| TOTAL EUROPA | 901.0 | 2'486.9 | 7'050.9 | 10'438.7 | 162.6 | 1'021.9 | 6'046.6 | 7'231.1 | 0.5 | 11'515.4 | 1'500.6 | | 30'686.3 |
| Andere Länder | 0.0 | 0.0 | 0.0 | 0.0 | 0.0 | 0.0 | 0.0 | 0.0 | 0.0 | 0.0 | 0.0 | | 0.0 |
| Kanada | 0.0 | 0.0 | 0.0 | 0.0 | 0.0 | 0.0 | 0.0 | 0.0 | 0.0 | 0.0 | 0.0 | | 0.0 |
| USA | 0.0 | 0.0 | 0.0 | 0.0 | 0.0 | 0.0 | 0.0 | 0.0 | 0.0 | 0.0 | 0.0 | | 0.0 |
| Nordamerika übrige | 0.0 | 0.0 | 0.0 | 0.0 | 0.0 | 0.0 | 0.0 | 0.0 | 0.0 | 0.0 | 0.0 | | 0.0 |
| Lateinamerika | 0.0 | 0.0 | 0.0 | 0.0 | 0.0 | 0.0 | 0.0 | 0.0 | 0.0 | 0.0 | 0.0 | | 0.0 |
| Afrika | 0.0 | 0.0 | 0.0 | 0.0 | 0.0 | 0.0 | 0.0 | 0.0 | 0.0 | 0.0 | 0.0 | | 0.0 |
| Asien | 0.0 | 0.0 | 0.1 | 0.1 | 0.0 | 0.0 | 0.4 | 0.4 | 0.0 | 0.0 | 0.0 | | 0.4 |
| Australien | 0.0 | 0.0 | 0.0 | 0.0 | 0.0 | 0.0 | 0.0 | 0.0 | 0.0 | 0.0 | 0.0 | | 0.0 |
| TOTAL ANDERE LÄNDER | 0.0 | 0.0 | 0.1 | 0.1 | 0.0 | 0.0 | 0.4 | 0.4 | 0.0 | 0.1 | 0.0 | | 0.5 |
| TOTAL | 901.0 | 2'486.9 | 7'050.9 | 10'438.8 | 162.6 | 1'021.9 | 6'046.9 | 7'231.4 | 0.5 | 11'515.5 | 1'500.6 | | 30'686.8 |

Quelle: OZD

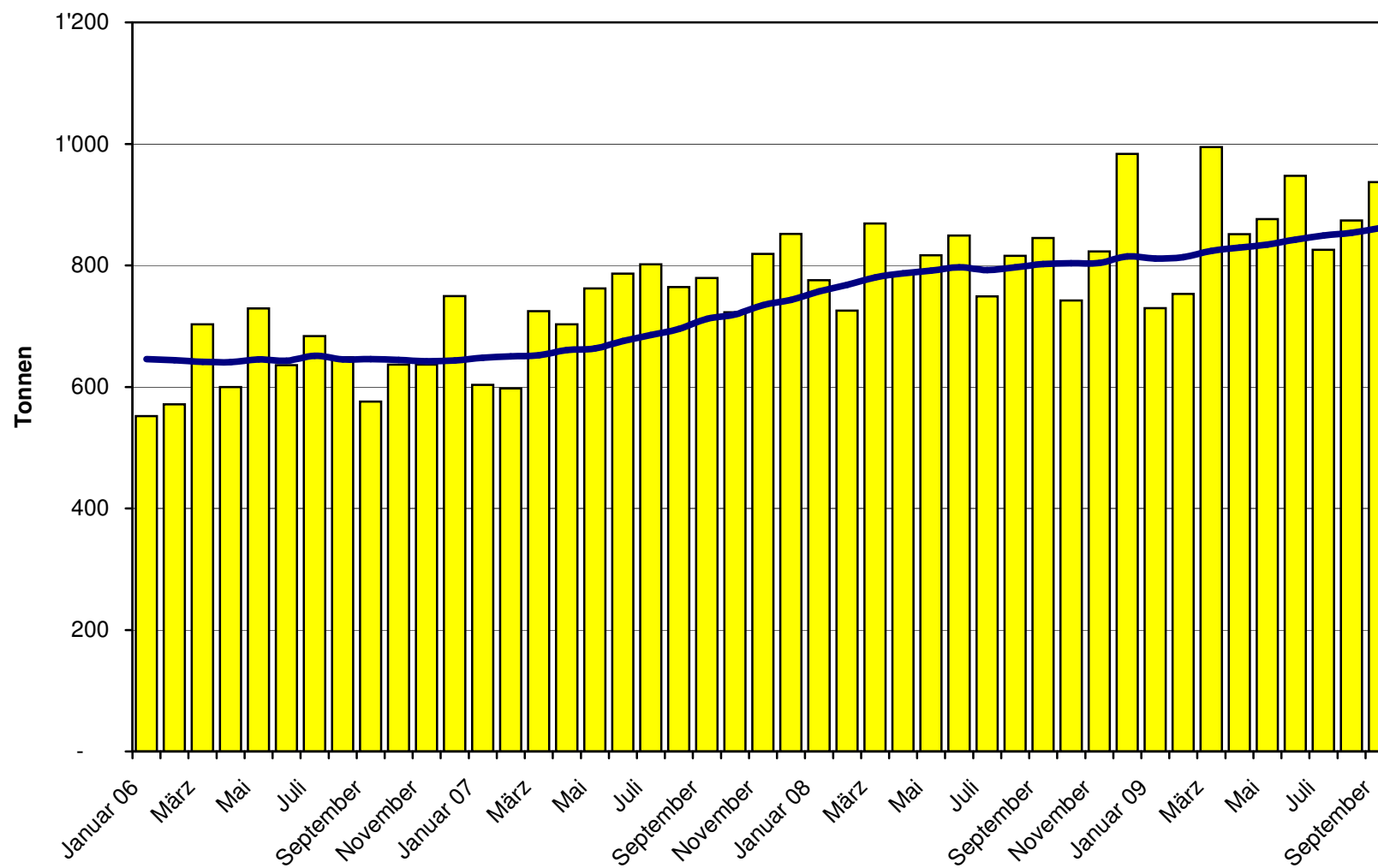
Total Käseimport ab 2006 Mittelwert der letzten 12 Monate



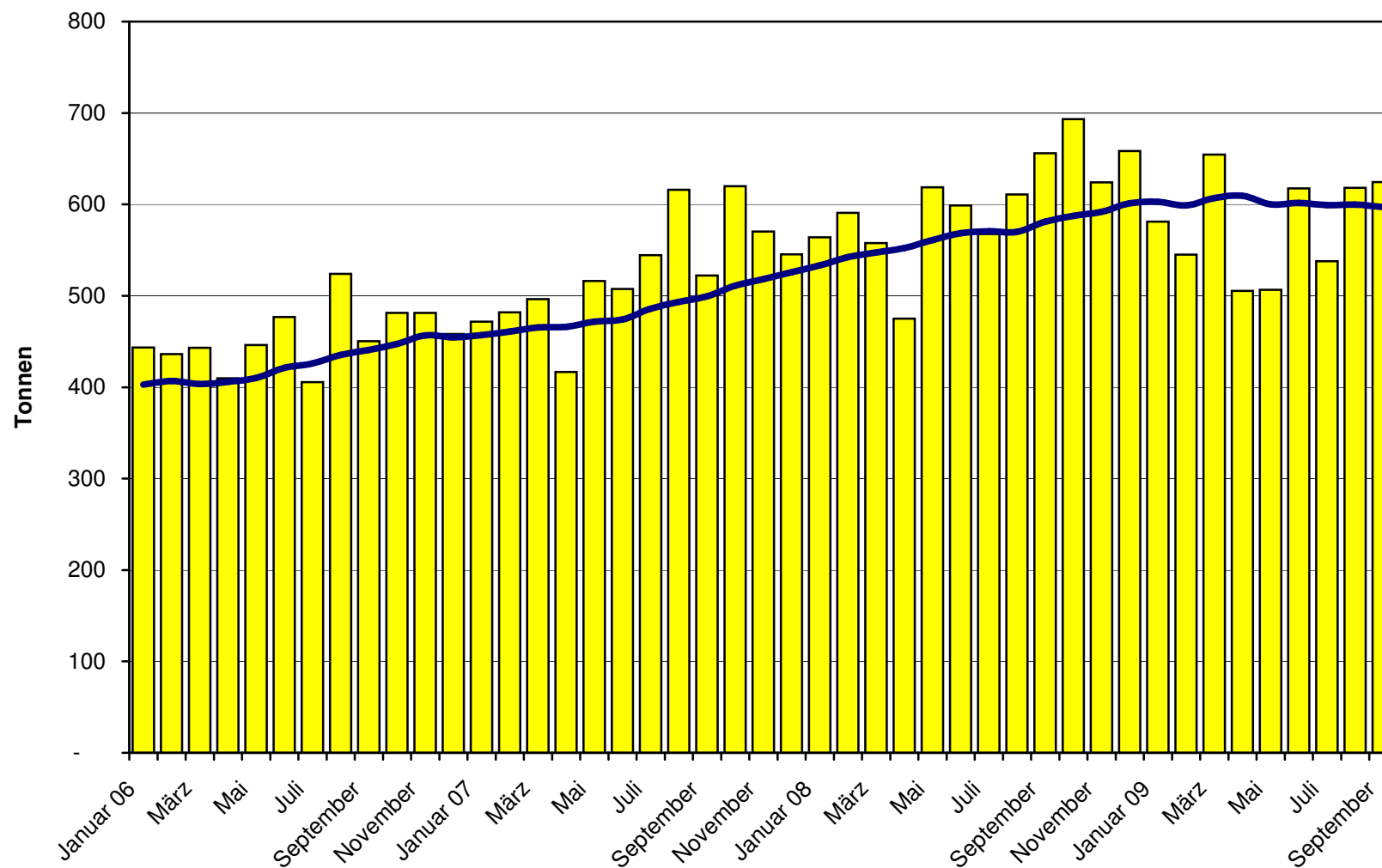
Frischkäse Import ab 2006 Mittelwert der letzten 12 Monate



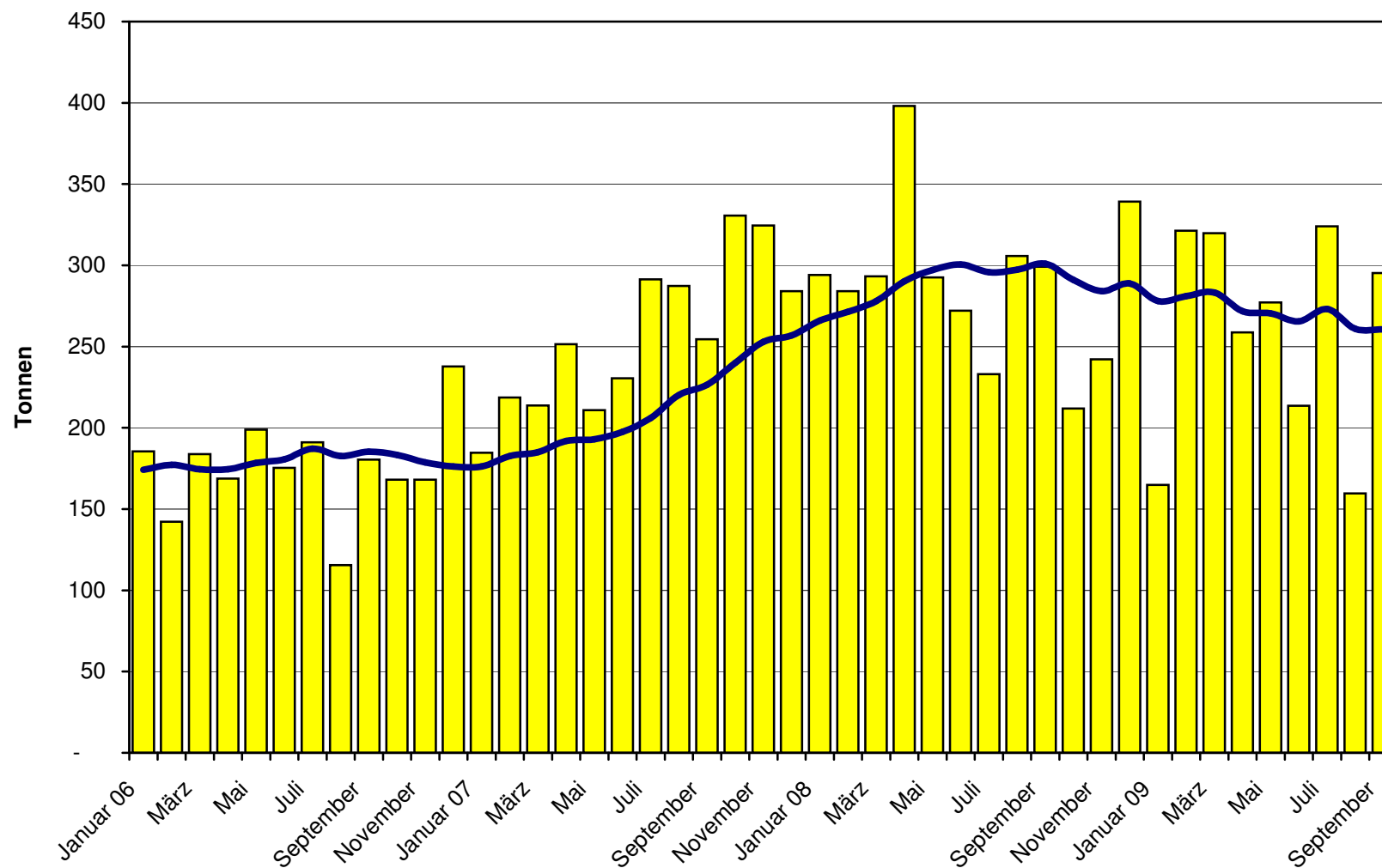
Weichkäse Import ab 2006 Mittelwert der letzten 12 Monate



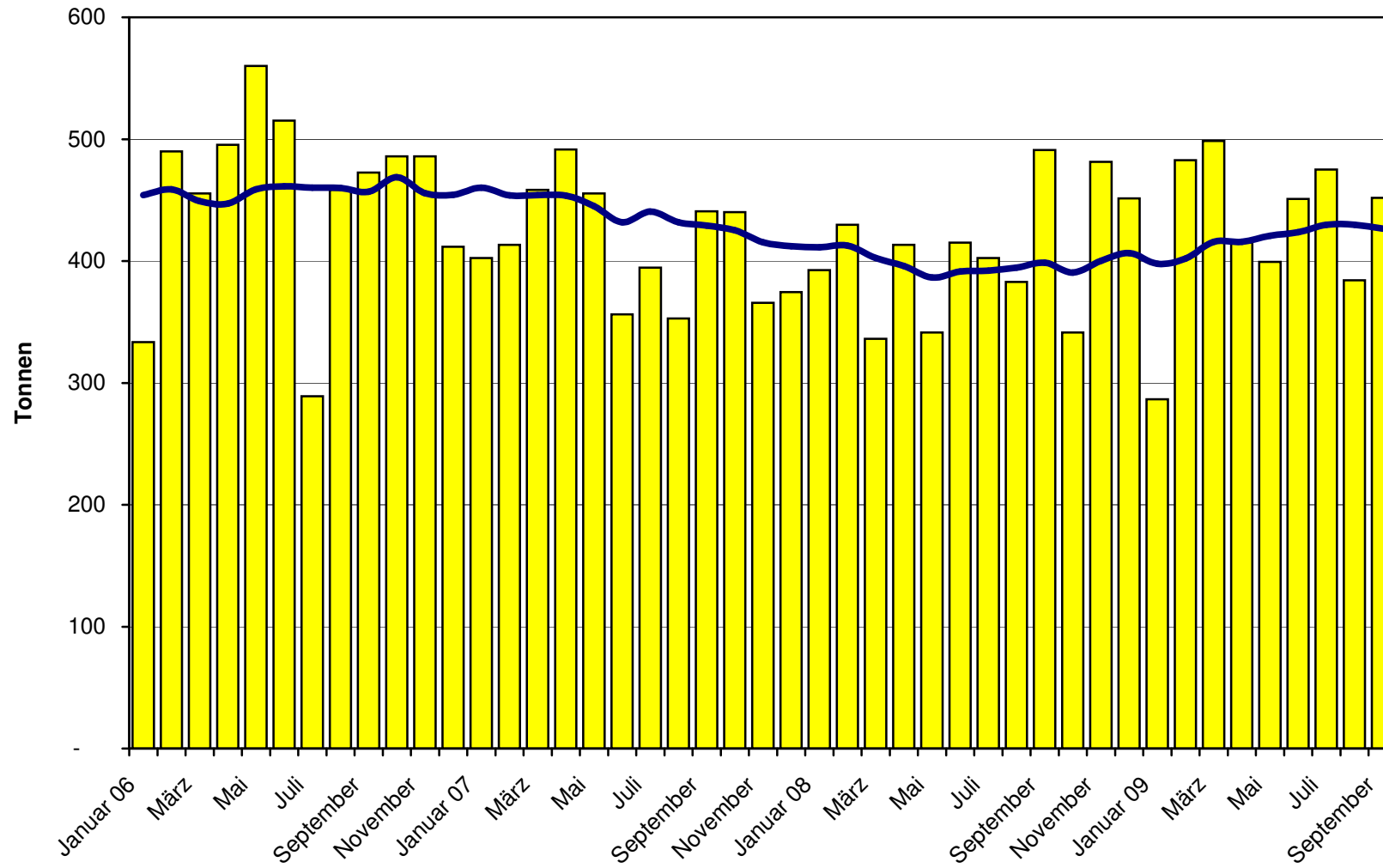
Halbhartkäse Import ab 2006 Mittelwert der letzten 12 Monate



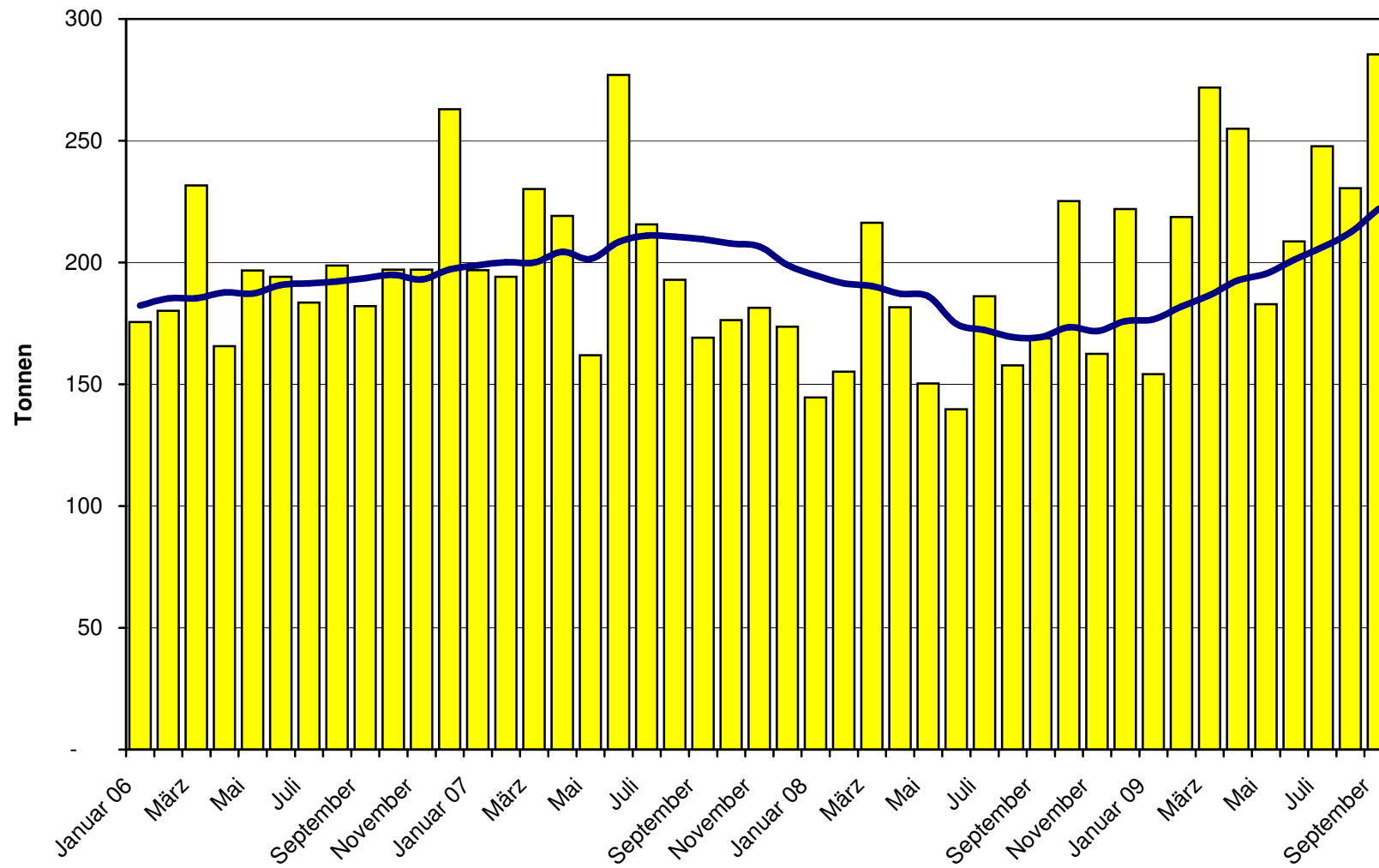
Hartkäse Import ab 2006 Mittelwert der letzten 12 Monate



**Extrahartkäse Import ab 2006
Mittelwert der letzten 12 Monate**



Schmelzkäse Import ab 2006 Mittelwert der letzten 12 Monate



Käseimporte nach Ländern, September 2009 Total 3'824 Tonnen

