

Monatsstatistik Milchmarkt

Juni 2010

Bern, 12. August 2010

1 - Milchproduktion / Milchverwertung

- 01 Monatliche Milchproduktion
- 10 Milchverwertung nach Milchäquivalent
- 11 Milchverwertung nach Milchäquivalent (Grafik)
- 14.1+14.2 Milchgehaltswerte nach Kanton
- 15.1+15.2 Qualitätskontrolle Rohmilch
 - 16 Verteilung Keimzahlen (Grafik)
 - 17 Verteilung Zellzahlen (Grafik)

2 - Hergestellte Milchprodukte

- 20 Käseproduktion, monatlich und kumuliert
- 21 Käseproduktion, monatlich und kumuliert, Vorjahr
- 22 Käseproduktion im Vergleich zum Vorjahresmonat (Grafik)
- 23 Käseproduktion kumuliert im Vergleich zur Vorjahresperiode (Grafik)
- 24 Käseproduktion je Sorte, kumuliert (Grafik)
- 25 Konsummilchproduktion / Butterproduktion
- 26 Milchspezialitäten
- 27 Milchpulver und Milchcondensat

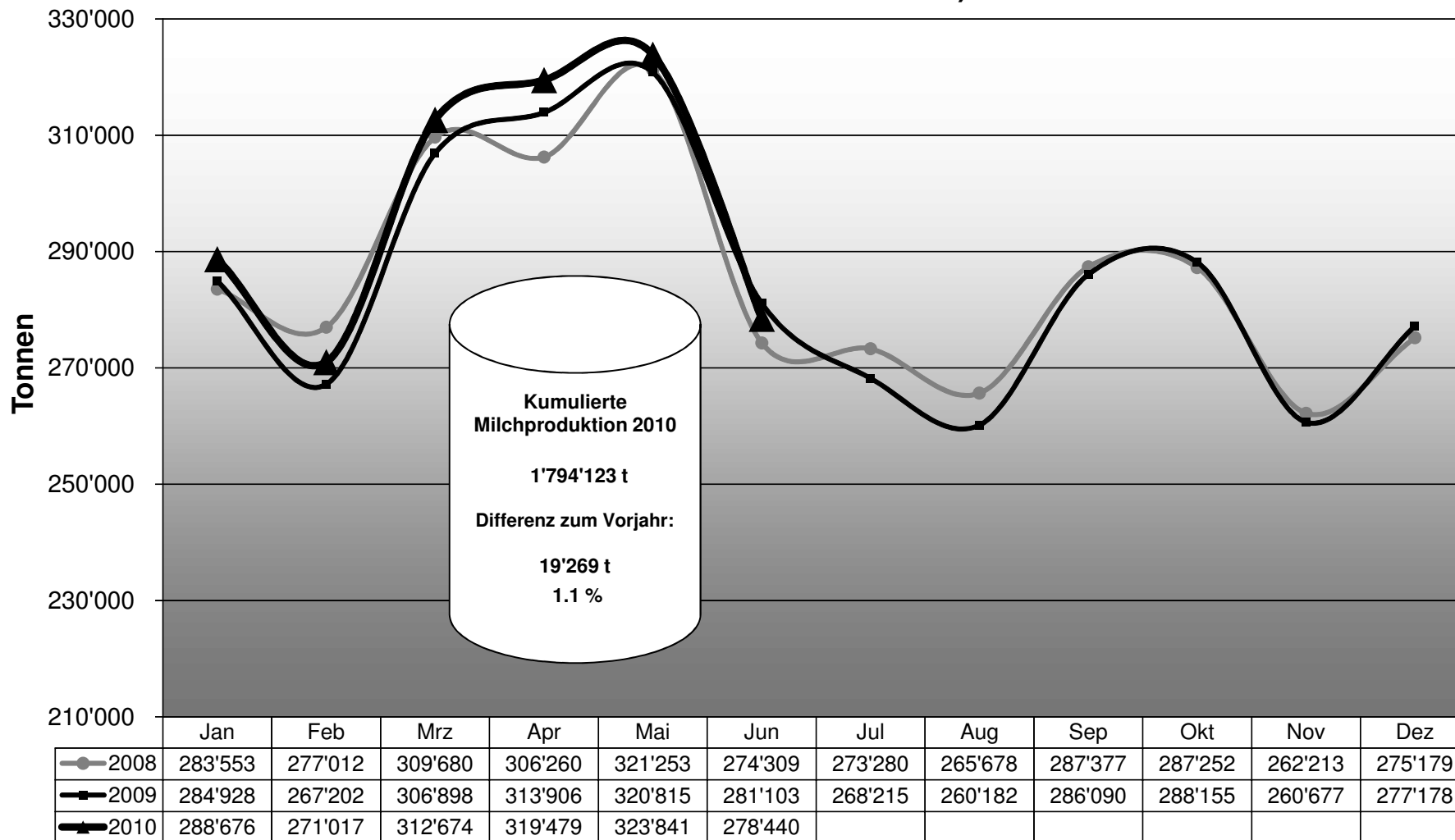
3 - Export Käse

- 30 Käseexport nach Produkten/Gruppen
- 31 Käseexport nach Ländern
 - 31 Käseexport nach Ländern, Vorjahresmonat
 - 32 Käseexport nach Ländern, kumuliert
 - 32 Käseexport nach Ländern, kumuliert, Vorjahr
- 33-1 bis 33-10 Käseproduktion total / ausgewählte Sorten (3 Jahre)
- 34 Anteil Käseexport je Sorte (Grafik)

4 - Import Käse

- 40 Käseimport nach Produkten/Gruppen
- 41 Käseimport nach Ländern
 - 41 Käseimport nach Ländern, Vorjahresmonat
 - 42 Käseimport nach Ländern, kumuliert
 - 42 Käseimport nach Ländern, kumuliert, Vorjahr
- 43.1 bis 43.7 Käseimport total / nach Kategorien (3 Jahre)
- 44 Anteil Käseimport nach Ländern (Grafik)

Monatliche Milchproduktion 2010 (inkl. Zonenmilch Genf sowie Milch aus dem Fürstentum Liechtenstein)



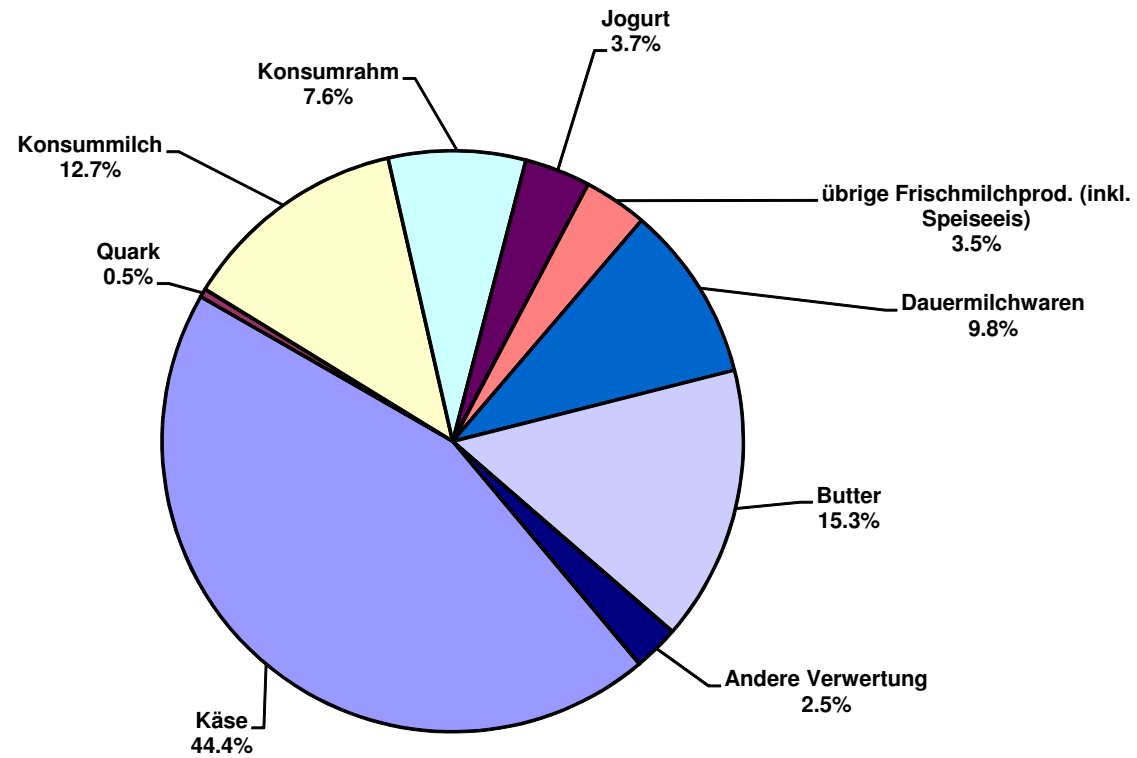
Milchverwertung nach Milchäquivalent

| Milchverwertung zu: | Monatliche Verwertung | | Differenz zum Vorjahres-Monat | | Kumulierte Verwertung | | Differenz zur Vorjahresperiode | |
|---|-----------------------|------------------|-------------------------------|-------------|-------------------------|-------------------------|--------------------------------|------------|
| | <i>Juni 2009</i> | <i>Juni 2010</i> | | | <i>Jan. - Jun. 2009</i> | <i>Jan. - Jun. 2010</i> | | |
| | Tonnen | Tonnen | Tonnen | (%) | Tonnen | Tonnen | Tonnen | (%) |
| Käse | 124'795 | 123'627 | -1'168 | -0.9 | 706'890 | 725'496 | 18'606 | 2.6 |
| Quark | 1'410 | 1'343 | -67 | -4.8 | 8'641 | 8'303 | -338 | -3.9 |
| Konsummilch | 32'972 | 35'241 | 2'269 | 6.9 | 210'053 | 213'647 | 3'594 | 1.7 |
| Konsumrahm | 21'288 | 21'254 | -34 | -0.2 | 125'400 | 129'680 | 4'280 | 3.4 |
| Jogurt | 9'888 | 10'175 | 287 | 2.9 | 58'450 | 58'182 | -268 | -0.5 |
| übrige Frischmilchprod. (inkl. Speiseeis) | 8'207 | 9'839 | 1'632 | 19.9 | 54'152 | 52'762 | -1'390 | -2.6 |
| Dauermilchwaren | 30'044 | 27'329 | -2'715 | -9.0 | 216'233 | 214'491 | -1'742 | -0.8 |
| Butter | 44'337 | 42'607 | -1'730 | -3.9 | 333'814 | 342'909 | 9'095 | 2.7 |
| Andere Verwertung | 8'162 | 7'025 | -1'137 | -13.9 | 61'221 | 48'653 | -12'568 | -20.5 |
| Total Milchverwertung | 281'103 | 278'440 | -2'663 | -0.9 | 1'774'854 | 1'794'123 | 19'269 | 1.1 |

Ein Milchäquivalent entspricht den Inhaltsstoffen von Eiweiss und Fett eines Kilogramms Milch (Anteil Eiweiss = 0.45 Äquivalent und Anteil Fett = 0.55 Äquivalent)

- 1 kg Vollmilch Past/UHT = 0.45 Eiweiss + 0.55 Fett = 1.00 Milchäquivalent
- 1 kg Magermilch Past/UHT = 0.45 Eiweiss + 0.05 Fett = 0.50 Milchäquivalent
- 1 kg Vollrahm Past/UHT = 0.30 Eiweiss + 4.80 Fett = 5.10 Milchäquivalent

Milchverwertung nach Milchäquivalent Juni 2010 Total 278'440 Tonnen



Milchgehaltswerte nach Kanton 2010 (Seite 1 / Aargau bis Nidwalden)

| Kanton | Inhaltsstoffe | Jan. g/kg | Feb. g/kg | März g/kg | April g/kg | Mai g/kg | Juni g/kg | Juli g/kg | Aug. g/kg | Sept. g/kg | Okt. g/kg | Nov. g/kg | Dez. g/kg | Durchschnitt 2010 g/kg |
|------------------------|---------------|--------------|--------------|--------------|---------------|-------------|--------------|--------------|--------------|---------------|--------------|--------------|--------------|---------------------------|
| Aargau | Fett | 43.3 | 43.1 | 43.1 | 41.0 | 40.9 | 40.1 | | | | | | | 41.9 |
| | Eiweiss | 33.9 | 33.5 | 33.0 | 32.9 | 32.6 | 31.8 | | | | | | | 33.0 |
| | Total | 77.2 | 76.6 | 76.1 | 73.9 | 73.5 | 71.9 | | | | | | | 74.9 |
| Appenzell Innerrhoden | Fett | 42.0 | 42.2 | 41.9 | 41.9 | 41.2 | 41.4 | | | | | | | 41.8 |
| | Eiweiss | 33.8 | 33.8 | 33.2 | 33.3 | 32.9 | 32.2 | | | | | | | 33.2 |
| | Total | 75.8 | 76.0 | 75.1 | 75.2 | 74.1 | 73.6 | | | | | | | 75.0 |
| Appenzell Ausserrhoden | Fett | 41.9 | 41.6 | 41.6 | 41.2 | 41.0 | 40.3 | | | | | | | 41.3 |
| | Eiweiss | 34.2 | 33.9 | 33.6 | 33.5 | 33.0 | 32.3 | | | | | | | 33.4 |
| | Total | 76.1 | 75.5 | 75.2 | 74.7 | 74.0 | 72.6 | | | | | | | 74.7 |
| Baselland | Fett | 42.5 | 42.6 | 41.8 | 41.1 | 40.6 | 39.7 | | | | | | | 41.4 |
| | Eiweiss | 32.7 | 32.6 | 31.8 | 32.2 | 31.9 | 31.1 | | | | | | | 32.1 |
| | Total | 75.2 | 75.2 | 73.6 | 73.3 | 72.5 | 70.8 | | | | | | | 73.4 |
| Baselstadt | Fett | 40.0 | 39.7 | 40.4 | 39.0 | 39.9 | 39.1 | | | | | | | 39.7 |
| | Eiweiss | 33.2 | 34.1 | 33.3 | 31.9 | 31.9 | 31.2 | | | | | | | 32.6 |
| | Total | 73.2 | 73.8 | 73.7 | 70.9 | 71.7 | 70.2 | | | | | | | 72.3 |
| Bern | Fett | 42.5 | 42.5 | 42.1 | 41.3 | 40.8 | 40.7 | | | | | | | 41.6 |
| | Eiweiss | 33.1 | 32.9 | 32.3 | 32.0 | 32.5 | 32.1 | | | | | | | 32.5 |
| | Total | 75.6 | 75.4 | 74.4 | 73.3 | 73.3 | 72.8 | | | | | | | 74.1 |
| Freiburg | Fett | 41.3 | 41.1 | 40.8 | 39.7 | 39.1 | 39.8 | | | | | | | 40.3 |
| | Eiweiss | 32.9 | 32.6 | 32.1 | 31.9 | 32.7 | 32.0 | | | | | | | 32.4 |
| | Total | 74.2 | 73.7 | 72.9 | 71.6 | 71.8 | 71.8 | | | | | | | 72.7 |
| Genf | Fett | 43.1 | 42.7 | 42.5 | 38.9 | 38.7 | 39.4 | | | | | | | 40.9 |
| | Eiweiss | 34.6 | 32.8 | 31.8 | 33.9 | 34.1 | 33.5 | | | | | | | 33.4 |
| | Total | 77.7 | 75.4 | 74.3 | 72.8 | 72.8 | 72.9 | | | | | | | 74.3 |
| Glarus | Fett | 39.7 | 39.6 | 39.8 | 39.4 | 39.7 | 39.7 | | | | | | | 39.7 |
| | Eiweiss | 31.9 | 31.6 | 31.6 | 31.6 | 31.6 | 32.1 | | | | | | | 31.8 |
| | Total | 71.6 | 71.2 | 71.4 | 71.0 | 71.8 | 71.8 | | | | | | | 71.5 |
| Graubünden | Fett | 39.4 | 39.4 | 39.7 | 39.8 | 39.4 | 40.5 | | | | | | | 39.7 |
| | Eiweiss | 31.9 | 32.0 | 31.9 | 32.5 | 32.9 | 32.8 | | | | | | | 32.3 |
| | Total | 71.3 | 71.4 | 71.6 | 72.3 | 72.3 | 73.3 | | | | | | | 72.0 |
| Jura | Fett | 41.2 | 41.5 | 40.9 | 40.3 | 40.1 | 38.9 | | | | | | | 40.5 |
| | Eiweiss | 32.5 | 32.4 | 31.8 | 32.1 | 32.3 | 31.7 | | | | | | | 32.1 |
| | Total | 73.7 | 73.9 | 72.7 | 72.4 | 72.4 | 70.6 | | | | | | | 72.6 |
| Luzern | Fett | 42.8 | 42.4 | 42.4 | 41.4 | 40.7 | 40.3 | | | | | | | 41.7 |
| | Eiweiss | 34.2 | 33.8 | 33.2 | 33.4 | 33.3 | 32.2 | | | | | | | 33.4 |
| | Total | 77.0 | 76.2 | 75.6 | 74.8 | 74.0 | 72.5 | | | | | | | 75.0 |
| Neuenburg | Fett | 41.1 | 40.8 | 40.8 | 40.0 | 39.6 | 39.1 | | | | | | | 40.2 |
| | Eiweiss | 32.9 | 32.6 | 32.3 | 31.6 | 32.7 | 32.4 | | | | | | | 32.4 |
| | Total | 74.0 | 73.4 | 73.1 | 71.6 | 72.3 | 71.5 | | | | | | | 72.7 |
| Nidwalden | Fett | 41.5 | 41.3 | 41.4 | 40.7 | 40.3 | 40.3 | | | | | | | 40.9 |
| | Eiweiss | 33.4 | 33.4 | 33.0 | 33.0 | 32.9 | 32.4 | | | | | | | 33.0 |
| | Total | 74.9 | 74.7 | 74.4 | 73.7 | 73.2 | 72.7 | | | | | | | 73.9 |

Quelle: Suisselab AG Zollikofen / Qualitas AG Zug

Die Angaben werden aus allen Proben (automatisch und handgefasste Proben) welche im Rahmen der Qualitätskontrolle der Milch untersucht werden, ermittelt (Medianwert).

Milchgehaltswerte nach Kanton 2010 (Seite 2 / Obwalden bis Zürich)

| Kanton | Inhaltsstoffe | Jan. g/kg | Feb. g/kg | März g/kg | April g/kg | Mai g/kg | Juni g/kg | Juli g/kg | Aug. g/kg | Sept. g/kg | Okt. g/kg | Nov. g/kg | Dez. g/kg | Durchschnitt 2010 g/kg |
|------------------------|---------------|--------------|--------------|--------------|---------------|-------------|--------------|--------------|--------------|---------------|--------------|--------------|--------------|---------------------------|
| Obwalden | Fett | 41.8 | 41.5 | 42.1 | 41.1 | 41.1 | 41.1 | | | | | | | 41.5 |
| | Eiweiss | 33.5 | 33.2 | 33.1 | 32.9 | 33.3 | 32.5 | | | | | | | 33.1 |
| | Total | 75.3 | 74.7 | 75.2 | 74.0 | 74.4 | 73.6 | | | | | | | 74.5 |
| Schaffhausen | Fett | 42.9 | 42.2 | 42.7 | 41.7 | 40.7 | 39.8 | | | | | | | 41.7 |
| | Eiweiss | 33.8 | 33.2 | 33.0 | 32.6 | 32.0 | 31.3 | | | | | | | 32.6 |
| | Total | 76.7 | 75.4 | 75.7 | 74.3 | 72.7 | 71.1 | | | | | | | 74.3 |
| Schwyz | Fett | 41.1 | 41.6 | 41.2 | 40.6 | 39.8 | 39.7 | | | | | | | 40.7 |
| | Eiweiss | 33.5 | 33.6 | 33.0 | 32.9 | 32.9 | 32.2 | | | | | | | 33.0 |
| | Total | 74.6 | 75.2 | 74.2 | 73.5 | 72.7 | 71.9 | | | | | | | 73.7 |
| St. Gallen | Fett | 42.4 | 42.0 | 41.8 | 41.1 | 40.6 | 40.3 | | | | | | | 41.4 |
| | Eiweiss | 34.1 | 33.9 | 33.4 | 33.4 | 33.2 | 32.4 | | | | | | | 33.4 |
| | Total | 76.5 | 75.9 | 75.2 | 74.5 | 73.8 | 72.7 | | | | | | | 74.8 |
| Solothurn | Fett | 43.1 | 43.0 | 42.5 | 41.5 | 41.1 | 40.1 | | | | | | | 41.9 |
| | Eiweiss | 33.4 | 33.1 | 32.5 | 32.5 | 32.5 | 31.7 | | | | | | | 32.6 |
| | Total | 76.5 | 76.1 | 75.0 | 74.0 | 73.6 | 71.8 | | | | | | | 74.5 |
| Tessin | Fett | 40.2 | 40.2 | 39.5 | 39.5 | 39.0 | 39.5 | | | | | | | 39.6 |
| | Eiweiss | 32.4 | 31.9 | 31.8 | 32.5 | 32.6 | 32.2 | | | | | | | 32.2 |
| | Total | 72.6 | 72.1 | 71.3 | 71.9 | 71.5 | 71.7 | | | | | | | 71.8 |
| Thurgau | Fett | 42.7 | 42.2 | 41.6 | 40.8 | 40.0 | 39.8 | | | | | | | 41.2 |
| | Eiweiss | 34.4 | 34.0 | 33.5 | 33.8 | 33.3 | 32.5 | | | | | | | 33.6 |
| | Total | 77.1 | 76.2 | 75.1 | 74.6 | 73.3 | 72.3 | | | | | | | 74.8 |
| Uri | Fett | 41.6 | 41.2 | 41.7 | 40.9 | 40.9 | 41.5 | | | | | | | 41.3 |
| | Eiweiss | 32.7 | 33.0 | 32.8 | 33.2 | 33.2 | 32.8 | | | | | | | 33.0 |
| | Total | 74.3 | 74.2 | 74.5 | 74.1 | 74.1 | 74.3 | | | | | | | 74.2 |
| Waadt | Fett | 41.1 | 40.5 | 40.1 | 39.3 | 38.6 | 38.6 | | | | | | | 39.7 |
| | Eiweiss | 33.2 | 32.9 | 32.3 | 32.2 | 32.8 | 32.4 | | | | | | | 32.6 |
| | Total | 74.3 | 73.4 | 72.4 | 71.5 | 71.4 | 71.0 | | | | | | | 72.3 |
| Wallis | Fett | 38.1 | 38.6 | 38.4 | 38.6 | 38.7 | 40.1 | | | | | | | 38.8 |
| | Eiweiss | 32.0 | 32.4 | 32.0 | 32.1 | 32.9 | 33.0 | | | | | | | 32.4 |
| | Total | 70.1 | 71.0 | 70.4 | 70.7 | 71.6 | 73.1 | | | | | | | 71.1 |
| Zug | Fett | 42.4 | 42.6 | 42.3 | 41.1 | 40.3 | 40.0 | | | | | | | 41.5 |
| | Eiweiss | 34.4 | 34.5 | 33.9 | 33.3 | 33.1 | 32.5 | | | | | | | 33.6 |
| | Total | 76.8 | 77.1 | 76.2 | 74.4 | 73.4 | 72.5 | | | | | | | 75.1 |
| Zürich | Fett | 42.7 | 42.8 | 42.5 | 41.2 | 40.2 | 39.9 | | | | | | | 41.6 |
| | Eiweiss | 34.1 | 33.9 | 33.2 | 33.2 | 32.9 | 32.1 | | | | | | | 33.2 |
| | Total | 76.8 | 76.7 | 75.7 | 74.4 | 73.1 | 72.0 | | | | | | | 74.8 |
| Durchschnittsgehalt CH | Fett | 42.2 | 42.0 | 41.7 | 40.9 | 40.3 | 40.2 | | | | | | | 41.2 |
| | Eiweiss | 33.5 | 33.2 | 32.7 | 32.7 | 32.8 | 32.1 | | | | | | | 32.8 |
| | Total | 75.7 | 75.2 | 74.4 | 73.6 | 73.1 | 72.3 | | | | | | | 74.1 |

Quelle: Suissselab AG Zollikofen / Qualitas AG Zug

Die Angaben werden aus allen Proben (automatisch und handgefasste Proben) welche im Rahmen der Qualitätskontrolle der Milch untersucht werden, ermittelt (Medianwert).

| Qualitätskontrolle Rohmilch Schweiz / Probeergebnisse Juni 2010 | | | | | | | | | | | | | | | | | | | | |
|---|---------------|-------------|-------------|-------------|-------------|-------------|---------------|---------------|-------------|-------------|-------------|-------------|-------------|---------------|---------------|-------------|---------------|---------------|--------------|---------------|
| Kanton | Keimbelastung | | | | | | | Zellgehalt | | | | | | | Hemmstoff | | | Gefrierpunkt | | |
| | K0 | K1 | K2 | K3 | K4 | K5 | KT | Z0 | Z1 | Z2 | Z3 | Z4 | Z5 | ZT | H0 | H1 | HT | G0 | G1 | GT |
| AG | 1'708 | 16 | 5 | 1 | 0 | 0 | 1'730 | 1'628 | 64 | 31 | 6 | 1 | 0 | 1'730 | 1'730 | 0 | 1'730 | 1'497 | 233 | 1'730 |
| AI | 321 | 0 | 0 | 0 | 0 | 0 | 321 | 309 | 10 | 2 | 0 | 0 | 0 | 321 | 320 | 1 | 321 | 274 | 47 | 321 |
| AR | 480 | 2 | 0 | 0 | 0 | 0 | 482 | 464 | 10 | 5 | 2 | 1 | 0 | 482 | 482 | 0 | 482 | 427 | 55 | 482 |
| BE | 6'711 | 53 | 20 | 4 | 2 | 1 | 6'791 | 6'540 | 190 | 50 | 7 | 4 | 0 | 6'791 | 6'791 | 0 | 6'791 | 5'837 | 954 | 6'791 |
| BL | 464 | 7 | 2 | 0 | 0 | 0 | 473 | 447 | 19 | 6 | 1 | 0 | 0 | 473 | 472 | 1 | 473 | 360 | 113 | 473 |
| BS | 2 | 0 | 0 | 0 | 0 | 0 | 2 | 2 | 0 | 0 | 0 | 0 | 0 | 2 | 2 | 0 | 2 | 2 | 0 | 2 |
| FR | 2'087 | 12 | 7 | 1 | 0 | 1 | 2'108 | 2'005 | 67 | 28 | 5 | 3 | 0 | 2'108 | 2'108 | 0 | 2'108 | 1'634 | 474 | 2'108 |
| GE | 8 | 0 | 0 | 0 | 0 | 0 | 8 | 8 | 0 | 0 | 0 | 0 | 0 | 8 | 8 | 0 | 8 | 5 | 3 | 8 |
| GL | 177 | 0 | 0 | 0 | 0 | 0 | 177 | 174 | 3 | 0 | 0 | 0 | 0 | 177 | 177 | 0 | 177 | 150 | 27 | 177 |
| GR | 506 | 7 | 3 | 3 | 0 | 0 | 519 | 490 | 24 | 2 | 3 | 0 | 0 | 519 | 519 | 0 | 519 | 466 | 53 | 519 |
| JU | 557 | 7 | 11 | 0 | 0 | 0 | 575 | 542 | 20 | 8 | 2 | 3 | 0 | 575 | 574 | 1 | 575 | 463 | 112 | 575 |
| LU | 2'731 | 25 | 14 | 2 | 0 | 0 | 2'772 | 2'633 | 104 | 26 | 8 | 1 | 0 | 2'772 | 2'772 | 0 | 2'772 | 2'506 | 266 | 2'772 |
| NE | 479 | 5 | 2 | 2 | 0 | 0 | 488 | 462 | 18 | 5 | 3 | 0 | 0 | 488 | 488 | 0 | 488 | 380 | 108 | 488 |
| NW | 286 | 3 | 0 | 0 | 0 | 0 | 289 | 283 | 4 | 0 | 1 | 1 | 0 | 289 | 289 | 0 | 289 | 275 | 14 | 289 |
| OW | 411 | 1 | 0 | 0 | 0 | 0 | 412 | 386 | 19 | 6 | 1 | 0 | 0 | 412 | 412 | 0 | 412 | 360 | 52 | 412 |
| SG | 2'996 | 15 | 4 | 1 | 0 | 0 | 3'016 | 2'889 | 98 | 21 | 7 | 1 | 0 | 3'016 | 3'011 | 5 | 3'016 | 2'654 | 362 | 3'016 |
| SH | 120 | 1 | 0 | 0 | 0 | 1 | 122 | 114 | 6 | 2 | 0 | 0 | 0 | 122 | 122 | 0 | 122 | 94 | 28 | 122 |
| SO | 698 | 7 | 4 | 0 | 0 | 0 | 709 | 682 | 22 | 4 | 1 | 0 | 0 | 709 | 709 | 0 | 709 | 580 | 129 | 709 |
| SZ | 830 | 7 | 8 | 2 | 0 | 1 | 848 | 795 | 32 | 17 | 2 | 2 | 0 | 848 | 847 | 1 | 848 | 771 | 77 | 848 |
| TG | 1'337 | 6 | 2 | 2 | 0 | 0 | 1'347 | 1'259 | 57 | 21 | 8 | 2 | 0 | 1'347 | 1'347 | 0 | 1'347 | 1'196 | 151 | 1'347 |
| TI | 88 | 1 | 1 | 0 | 0 | 0 | 90 | 81 | 7 | 1 | 1 | 0 | 0 | 90 | 90 | 0 | 90 | 76 | 14 | 90 |
| UR | 167 | 0 | 0 | 1 | 0 | 0 | 168 | 164 | 2 | 2 | 0 | 0 | 0 | 168 | 168 | 0 | 168 | 156 | 12 | 168 |
| VD | 1'057 | 20 | 11 | 0 | 4 | 0 | 1'092 | 1'020 | 44 | 18 | 9 | 1 | 0 | 1'092 | 1'092 | 0 | 1'092 | 844 | 248 | 1'092 |
| VS | 380 | 17 | 10 | 1 | 2 | 0 | 410 | 375 | 18 | 14 | 1 | 1 | 1 | 410 | 410 | 0 | 410 | 355 | 55 | 410 |
| ZG | 312 | 2 | 1 | 0 | 0 | 0 | 315 | 298 | 9 | 5 | 2 | 0 | 1 | 315 | 315 | 0 | 315 | 285 | 30 | 315 |
| ZH | 1'743 | 11 | 6 | 1 | 1 | 0 | 1'762 | 1'675 | 64 | 15 | 6 | 2 | 0 | 1'762 | 1'762 | 0 | 1'762 | 1'582 | 180 | 1'762 |
| Total | 26'656 | 225 | 111 | 21 | 9 | 4 | 27'026 | 25'725 | 911 | 289 | 76 | 23 | 2 | 27'026 | 27'017 | 9 | 27'026 | 23'229 | 3'797 | 27'026 |
| in % | 98.63 | 0.83 | 0.41 | 0.08 | 0.03 | 0.01 | 100 | 95.19 | 3.37 | 1.07 | 0.28 | 0.09 | 0.01 | 100 | 99.97 | 0.03 | 100 | 85.95 | 14.05 | 100 |

Legende:

K0 Anzahl Proben ohne Beanstandung der Keimbelastung in den Berichtsmonaten
 K1 Keimbelastung beanstandet, in den vorangehenden 4 Prüfungen keine weitere Beanstandung
 K2 Keimbelastung beanstandet, in den vorangehenden 4 Prüfungen bereits eine Beanstandung
 K3 Keimbelastung beanstandet, in den vorangehenden 4 Prüfungen bereits zwei weitere Beanstandungen
 K4 Keimbelastung beanstandet, in den vorangehenden 4 Prüfungen bereits drei weitere Beanstandungen
 K5 Keimbelastung beanstandet, in den vorangehenden 4 Prüfungen bereits viele weitere Beanstandungen
 KT Total der auf Keimbelastung geprüften Proben
 Z0 Anzahl Proben ohne Beanstandung des Zellgehalts in den Berichtsmonaten
 Z1 Zellgehalt beanstandet, in den vorangehenden 4 Prüfungen keine weitere Beanstandung
 Z2 Zellgehalt beanstandet, in den vorangehenden 4 Prüfungen bereits eine Beanstandung

Z3 Zellgehalt beanstandet, in den vorangehenden 4 Prüfungen bereits zwei weitere Beanstandungen
 Z4 Zellgehalt beanstandet, in den vorangehenden 4 Prüfungen bereits drei weitere Beanstandungen
 Z5 Zellgehalt beanstandet, in den vorangehenden 4 Prüfungen bereits viele weitere Beanstandungen
 ZT Total der auf Zellgehalt geprüften Proben
 H0 Anzahl Proben ohne Beanstandung wegen Hemmstoffnachweis in den Berichtsmonaten
 H1 Anzahl Proben mit Beanstandung wegen Hemmstoffnachweis in den Berichtsmonaten
 HT Total der auf Hemmstoff geprüften Proben
 G0 Anzahl Proben mit Gefrierpunkt <= -0.520 °C
 G1 Anzahl Proben mit Gefrierpunkt > -0.520 °C
 GT Total der auf Gefrierpunkt untersuchten Proben

Quelle: Suisselab AG Zollikofen / Qualitas AG Zug / Agroscope Liebefeld-Posieux

Verteilung Gesamtkeimzahl / Bereiche in 1'000 Keime/ml

Juni 2010

| Von | 1 | 3 | 5 | 7 | 10 | 30 | 80 | 100 | 300 | 1'000 | 3'000 | ≥ | Total |
|--------|-------|-------|-------|-------|-------|------|-------|--------|-------|-------|-------|--------|------------|
| bis | 2 | 4 | 6 | 9 | 29 | 79 | 99 | 299 | 999 | 2'999 | 9'999 | 10'000 | Ergebnisse |
| Anzahl | 2509 | 4785 | 6369 | 6186 | 5978 | 927 | 60.00 | 219.00 | 58.00 | 19.00 | 16.00 | 1.00 | 27'127 |
| In % | 9.25 | 17.64 | 23.48 | 22.80 | 22.04 | 3.42 | 0.22 | 0.81 | 0.21 | 0.07 | 0.06 | 0.00 | 100 |
| | 98.62 | | | | | | 1.03 | | 0.35 | | | | 100 |

Verteilung Somatische Zellen / Bereiche in 1'000 Zellen / ml

Juni 2010

| Von | 1 | 100 | 200 | 300 | 350 | 400 | 500 | 600 | 700 | 800 | 900 | ≥ | Total |
|--------|-------|--------|-------|------|--------|--------|--------|-------|-------|-------|------|-------|------------|
| bis | 99 | 199 | 299 | 349 | 399 | 499 | 599 | 699 | 799 | 899 | 999 | 1'000 | Ergebnisse |
| Anzahl | 9'335 | 11'482 | 4'157 | 861 | 492.00 | 454.00 | 192.00 | 87.00 | 47.00 | 20.00 | 6.00 | 20.00 | 27'153 |
| In % | 34.38 | 42.29 | 15.31 | 3.17 | 1.81 | 1.67 | 0.71 | 0.32 | 0.17 | 0.07 | 0.02 | 0.07 | 100 |
| | 95.15 | | | | 4.85 | | | | | | | | 100 |

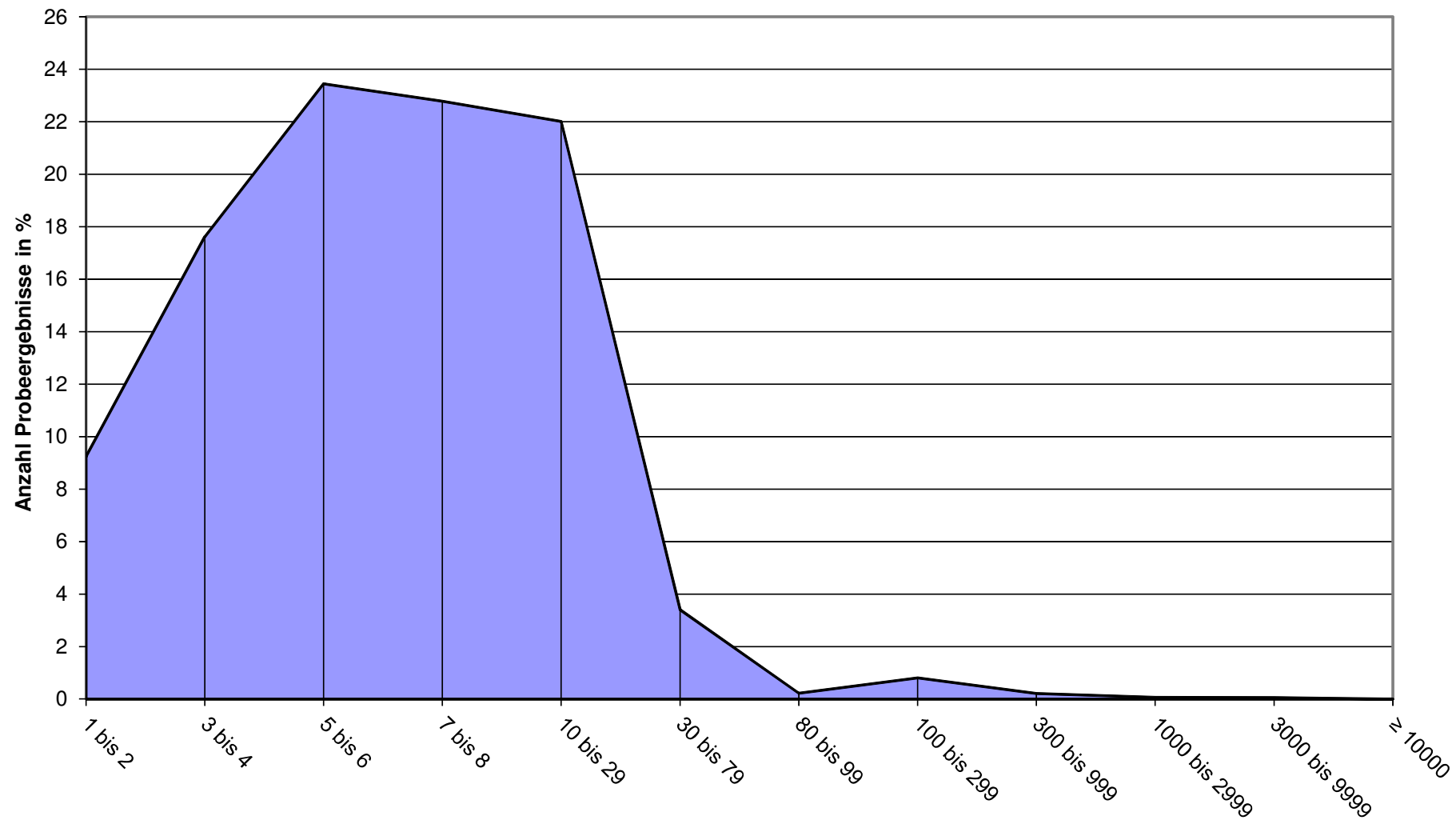
Verteilung Gefrierpunkt / Bereiche in °C

Juni 2010

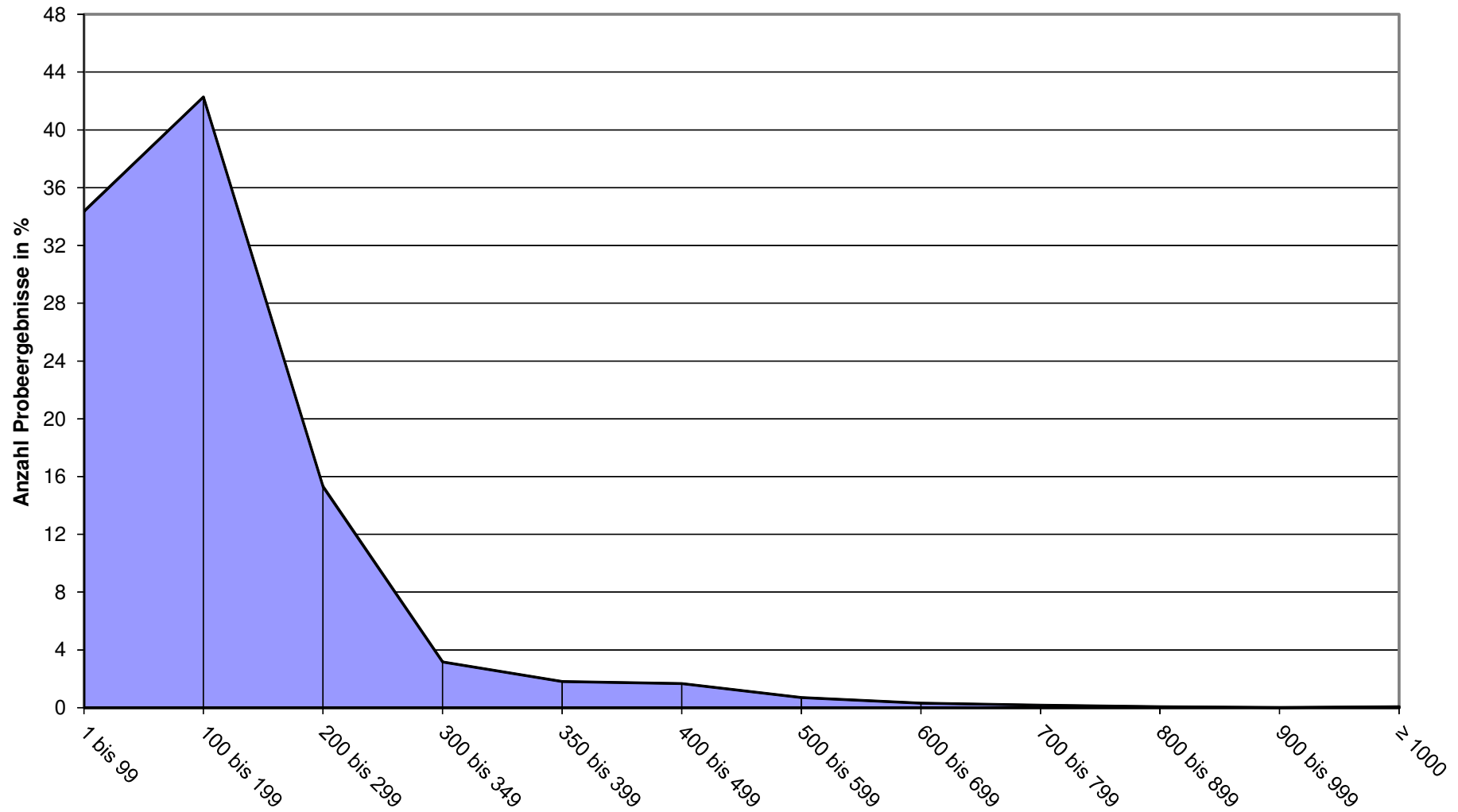
| Von | ≤ | -0.539 | -0.535 | -0.531 | -0.527 | -0.523 | -0.519 | -0.515 | -0.511 | -0.507 | -0.503 | ≥ | Total |
|--------|--------|--------|--------|--------|--------|--------|---------|--------|--------|--------|--------|--------|------------|
| bis | -0.540 | -0.536 | -0.532 | -0.528 | -0.524 | -0.52 | -0.516 | -0.512 | -0.508 | -0.504 | -0.5 | -0.499 | Ergebnisse |
| Anzahl | 49 | 141 | 962 | 4'368 | 9'475 | 8'339 | 2949.48 | 616.49 | 142.49 | 57.50 | 10.50 | 40.00 | 27'153 |
| In % | 0.18 | 0.52 | 3.54 | 16.09 | 34.90 | 30.71 | 10.86 | 2.27 | 0.52 | 0.21 | 0.04 | 0.15 | 100 |
| | 85.94 | | | | | | 10.86 | 3.19 | | | | | 100 |

Quelle: Suisselab AG Zollikofen / Qualitas AG Zug / Agroscope Liebefeld-Posieux

Verteilung Keimzahlen Juni 2010 (in 1'000 Keime / ml)



Verteilung Zellzahlen Juni 2010 (in 1'000 Zellen / ml)



Käseproduktion 2010 kumuliert mit Vorjahresvergleich

| | Jan. | Feb. | März | April | Mai | Juni | Juli | Aug. | Sept. | Okt. | Nov. | Dez. | Kumuliert 2009 | Kumuliert 2010 | Differenz zur Vorjahresperiode | |
|---|---------------|---------------|---------------|---------------|---------------|---------------|----------|----------|----------|----------|----------|----------|-------------------|-------------------|-----------------------------------|------------|
| | Tonnen | Tonnen | Tonnen | Tonnen | Tonnen | Tonnen | Tonnen | Tonnen | Tonnen | Tonnen | Tonnen | Tonnen | Tonnen | Tonnen | Tonnen | Prozent |
| Quark | 657 | 824 | 907 | 826 | 844 | 783 | 0 | 0 | 0 | 0 | 0 | 0 | 5'025 | 4'841 | -184 | -3.7 |
| Mozzarella | 1'346 | 1'369 | 1'697 | 1'744 | 1'710 | 1'941 | 0 | 0 | 0 | 0 | 0 | 0 | 8'641 | 9'807 | 1'166 | 13.5 |
| Mascarpone | 45 | 46 | 65 | 56 | 92 | 73 | 0 | 0 | 0 | 0 | 0 | 0 | 278 | 377 | 99 | 35.6 |
| Übrige Frischkäse | 1'078 | 1'209 | 1'546 | 1'365 | 1'388 | 1'544 | 0 | 0 | 0 | 0 | 0 | 0 | 8'250 | 8'130 | -120 | -1.5 |
| Frischkäse total | 3'126 | 3'448 | 4'215 | 3'991 | 4'035 | 4'341 | 0 | 0 | 0 | 0 | 0 | 0 | 22'193 | 23'156 | 963 | 4.3 |
| Weisschimmelkäse, mager bis viertelfett | 0 | 0 | 0 | 0 | 0 | 0 | 0 | 0 | 0 | 0 | 0 | 0 | 0 | 0 | 0 | 0 |
| Weisschimmelkäse, halb- bis vollfett | 99 | 91 | 135 | 111 | 106 | 105 | 0 | 0 | 0 | 0 | 0 | 0 | 635 | 647 | 12 | 1.9 |
| Weisschimmelkäse, überfett | 118 | 154 | 192 | 130 | 158 | 133 | 0 | 0 | 0 | 0 | 0 | 0 | 786 | 885 | 99 | 12.6 |
| Blau-, Grün- und Schimmelkäse | 0 | 1 | 0 | 0 | 0 | 1 | 0 | 0 | 0 | 0 | 0 | 0 | 2 | 2 | 0 | 0 |
| Tomme | 162 | 152 | 180 | 159 | 193 | 172 | 0 | 0 | 0 | 0 | 0 | 0 | 1'061 | 1'018 | -43 | -4.1 |
| Vacherin Mont d'Or | 54 | 39 | 2 | 0 | 0 | 0 | 0 | 0 | 0 | 0 | 0 | 0 | 96 | 95 | -1 | -1.0 |
| Anderer Weichkäse mager, viertelfett | 62 | 105 | 119 | 59 | 110 | 85 | 0 | 0 | 0 | 0 | 0 | 0 | 240 | 540 | 300 | 125.0 |
| Anderer Weichkäse, halb- bis vollfett | 51 | 51 | 69 | 54 | 57 | 50 | 0 | 0 | 0 | 0 | 0 | 0 | 370 | 332 | -38 | -10.3 |
| Anderer Weichkäse, überfett | 30 | 25 | 31 | 26 | 29 | 24 | 0 | 0 | 0 | 0 | 0 | 0 | 211 | 165 | -46 | -21.8 |
| Weichkäse total | 577 | 618 | 728 | 540 | 654 | 569 | 0 | 0 | 0 | 0 | 0 | 0 | 3'401 | 3'686 | 285 | 8.4 |
| Appenzeller Käse | 736 | 690 | 799 | 759 | 816 | 824 | 0 | 0 | 0 | 0 | 0 | 0 | 3'772 | 4'624 | 852 | 22.6 |
| Tilsiter | 325 | 282 | 377 | 363 | 375 | 284 | 0 | 0 | 0 | 0 | 0 | 0 | 1'919 | 2'006 | 87 | 4.5 |
| Walliser Käse (Walliser Raclettekäse) | 208 | 201 | 235 | 223 | 217 | 136 | 0 | 0 | 0 | 0 | 0 | 0 | 1'191 | 1'220 | 29 | 2.4 |
| Schweizer Raclettekäse | 468 | 485 | 773 | 888 | 981 | 1'234 | 0 | 0 | 0 | 0 | 0 | 0 | 5'077 | 4'829 | -248 | -4.9 |
| Vacherin Fribourgeois | 136 | 106 | 108 | 115 | 153 | 227 | 0 | 0 | 0 | 0 | 0 | 0 | 736 | 845 | 109 | 14.8 |
| Tête de Moine | 188 | 169 | 154 | 162 | 186 | 140 | 0 | 0 | 0 | 0 | 0 | 0 | 964 | 999 | 35 | 3.6 |
| Jurakäse | 22 | 21 | 21 | 20 | 29 | 31 | 0 | 0 | 0 | 0 | 0 | 0 | 127 | 144 | 17 | 13.4 |
| Winzerkäse | 36 | 36 | 39 | 37 | 33 | 30 | 0 | 0 | 0 | 0 | 0 | 0 | 206 | 211 | 5 | 2.4 |
| Mutschli | 35 | 41 | 46 | 44 | 36 | 40 | 0 | 0 | 0 | 0 | 0 | 0 | 228 | 242 | 14 | 6.1 |
| Alpkäse halbhart | 0 | 0 | 0 | 3 | 1 | 11 | 0 | 0 | 0 | 0 | 0 | 0 | 17 | 15 | -2 | -11.8 |
| Bündner Bergkäse | 72 | 68 | 80 | 79 | 72 | 57 | 0 | 0 | 0 | 0 | 0 | 0 | 490 | 428 | -62 | -12.7 |
| Berg- und Schnittkäse halbhart | 259 | 186 | 248 | 249 | 240 | 211 | 0 | 0 | 0 | 0 | 0 | 0 | 1'185 | 1'393 | 208 | 17.6 |
| St. Paulin Suisse | 32 | 46 | 53 | 33 | 45 | 62 | 0 | 0 | 0 | 0 | 0 | 0 | 324 | 271 | -53 | -16.4 |
| Schweizer Edamer | 34 | 16 | 30 | 37 | 35 | 25 | 0 | 0 | 0 | 0 | 0 | 0 | 169 | 177 | 8 | 4.7 |
| Kaltgereifte Käse | 3 | 0 | 1 | 1 | 0 | 1 | 0 | 0 | 0 | 0 | 0 | 0 | 6 | 6 | 0 | 0.0 |
| Halbhartkäse mit Schimmelbildung | 15 | 14 | 19 | 21 | 24 | 29 | 0 | 0 | 0 | 0 | 0 | 0 | 126 | 122 | -4 | -3.2 |
| Conveniencekäse | 174 | 170 | 134 | 236 | 138 | 120 | 0 | 0 | 0 | 0 | 0 | 0 | 794 | 972 | 178 | 22.4 |
| Schmelzrohware, vollfett | 132 | 111 | 124 | 124 | 176 | 112 | 0 | 0 | 0 | 0 | 0 | 0 | 961 | 779 | -182 | -18.9 |
| Anderer Halbhartkäse, mager bis viertelfett | 85 | 66 | 127 | 70 | 67 | 60 | 0 | 0 | 0 | 0 | 0 | 0 | 502 | 475 | -27 | -5.4 |
| Anderer Halbhartkäse, halb- bis vollfett * | 967 | 862 | 938 | 962 | 976 | 974 | 0 | 0 | 0 | 0 | 0 | 0 | 5'874 | 5'679 | -195 | -3.3 |
| Anderer Halbhartkäse, überfett | 236 | 220 | 207 | 293 | 285 | 243 | 0 | 0 | 0 | 0 | 0 | 0 | 1'247 | 1'484 | 237 | 19.0 |
| Halbhartkäse total | 4'161 | 3'790 | 4'512 | 4'717 | 4'884 | 4'851 | 0 | 0 | 0 | 0 | 0 | 0 | 25'918 | 26'915 | 997 | 3.8 |
| Emmentaler | 2'255 | 2'165 | 2'516 | 2'459 | 2'768 | 2'435 | 0 | 0 | 0 | 0 | 0 | 0 | 13'092 | 14'538 | 1'506 | 11.5 |
| Switzerland Swiss | 162 | 170 | 271 | 274 | 273 | 250 | 0 | 0 | 0 | 0 | 0 | 0 | 1'583 | 1'400 | -183 | -11.6 |
| Gruyère | 2'480 | 2'340 | 2'700 | 2'722 | 2'622 | 2'044 | 0 | 0 | 0 | 0 | 0 | 0 | 15'506 | 14'908 | -598 | -3.9 |
| Alpkäse hart | 0 | 0 | 0 | 0 | 38 | 135 | 0 | 0 | 0 | 0 | 0 | 0 | 174 | 173 | -1 | -0.6 |
| Anderer Hartkäse, mager bis viertelfett | 78 | 72 | 89 | 111 | 65 | 65 | 0 | 0 | 0 | 0 | 0 | 0 | 745 | 480 | -335 | -231.0 |
| Anderer Hartkäse, halb- bis vollfett ** | 556 | 553 | 639 | 762 | 708 | 566 | 0 | 0 | 0 | 0 | 0 | 0 | 4'782 | 3'786 | -996 | -20.8 |
| Anderer Hartkäse, überfett | 8 | 4 | 9 | 14 | 1 | 5 | 0 | 0 | 0 | 0 | 0 | 0 | 74 | 41 | -33 | -44.6 |
| Hartkäse total | 5'539 | 5'304 | 6'224 | 6'342 | 6'475 | 5'502 | 0 | 0 | 0 | 0 | 0 | 0 | 35'356 | 35'386 | 30 | 0.1 |
| Sbrinz | 176 | 162 | 189 | 189 | 178 | 169 | 0 | 0 | 0 | 0 | 0 | 0 | 1'007 | 1'063 | 56 | 5.6 |
| Extra Hartkäse total | 176 | 162 | 189 | 189 | 178 | 169 | 0 | 0 | 0 | 0 | 0 | 0 | 1'007 | 1'063 | 56 | 5.6 |
| Reiner Ziegenkäse | 27 | 46 | 81 | 105 | 109 | 90 | 0 | 0 | 0 | 0 | 0 | 0 | 436 | 458 | 22 | 5.0 |
| Reiner Schafkäse | 16 | 18 | 23 | 27 | 28 | 24 | 0 | 0 | 0 | 0 | 0 | 0 | 131 | 136 | 5 | 3.8 |
| Spezialprodukte total | 43 | 64 | 104 | 131 | 137 | 114 | 0 | 0 | 0 | 0 | 0 | 0 | 568 | 593 | 25 | 4.4 |
| Total alle Käsesorten | 13'622 | 13'385 | 15'973 | 15'911 | 16'360 | 15'547 | 0 | 0 | 0 | 0 | 0 | 0 | 88'448 | 90'798 | 2'350 | 2.7 |

* inkl. Lokalspezialitäten

** inkl. Schmelzrohware und Lokalspezialitäten

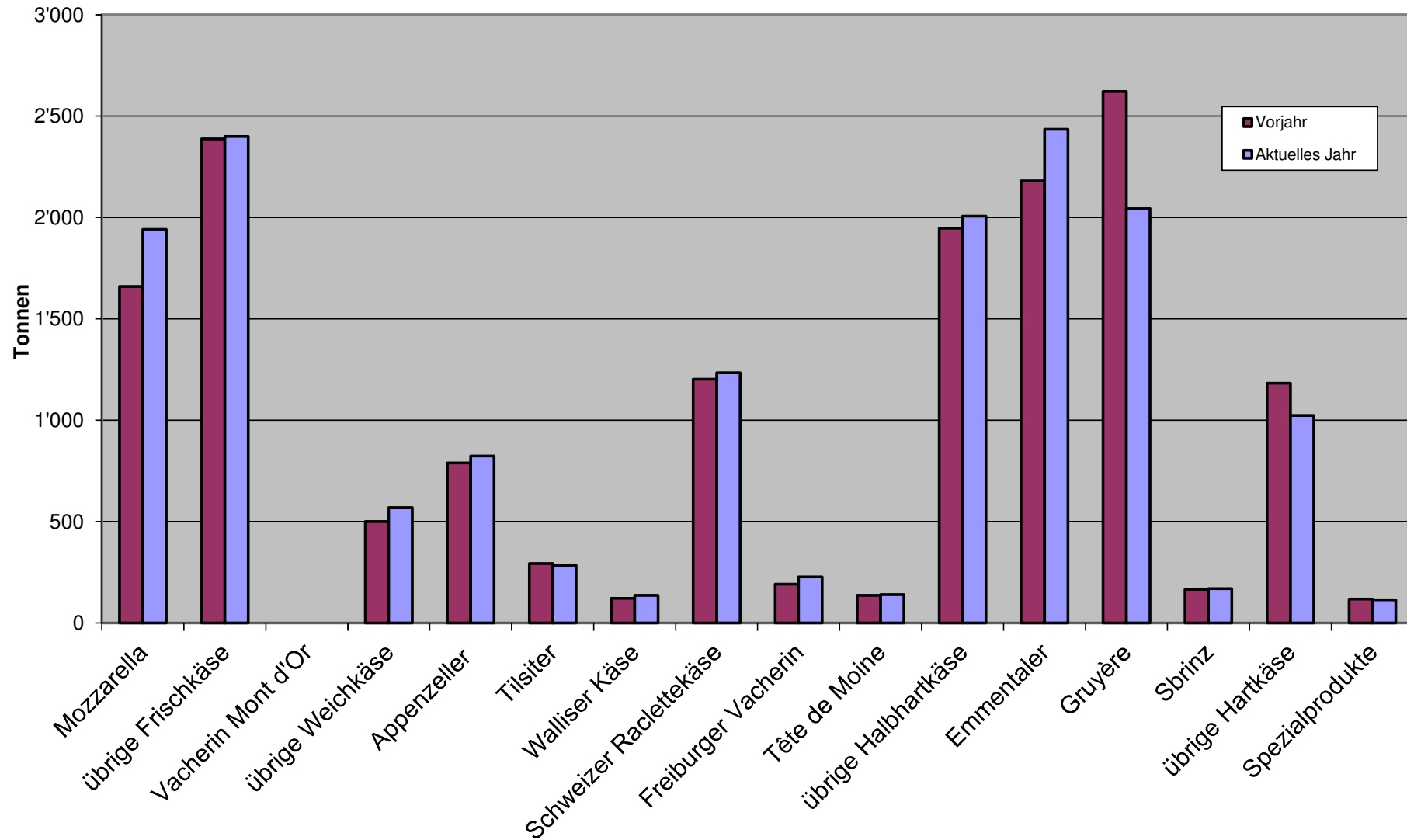
Käseproduktion 2009

| | Jan. | Feb. | März | April | Mai | Juni | Juli | Aug. | Sept. | Okt. | Nov. | Dez. | Kumuliert 2009 |
|---|---------------|---------------|---------------|---------------|---------------|---------------|---------------|---------------|---------------|---------------|---------------|---------------|----------------|
| | Tonnen | Tonnen | Tonnen | Tonnen | Tonnen | Tonnen | Tonnen | Tonnen | Tonnen | Tonnen | Tonnen | Tonnen | Tonnen |
| Quark | 755 | 831 | 842 | 823 | 927 | 847 | 854 | 927 | 766 | 776 | 801 | 889 | 10'038 |
| Mozzarella | 1'279 | 1'160 | 1'378 | 1'526 | 1'638 | 1'660 | 1'668 | 1'523 | 1'287 | 1'381 | 1'266 | 1'410 | 17'176 |
| Mascarpone | 38 | 40 | 50 | 33 | 58 | 59 | 46 | 50 | 56 | 55 | 55 | 83 | 623 |
| Übrige Frischkäse | 1'184 | 1'268 | 1'337 | 1'482 | 1'500 | 1'481 | 1'272 | 1'348 | 1'248 | 1'306 | 1'138 | 1'250 | 15'809 |
| Frischkäse total | 3'255 | 3'297 | 3'606 | 3'863 | 4'123 | 4'047 | 3'840 | 3'846 | 3'356 | 3'517 | 3'257 | 3'632 | 43'643 |
| Weisseschimmelkäse, mager bis viertelfett | 0 | 0 | 0 | 0 | 0 | 0 | 0 | 0 | 0 | 0 | 0 | 0 | 0 |
| Weisseschimmelkäse, halb- bis vollfett | 88 | 106 | 122 | 108 | 98 | 113 | 109 | 102 | 117 | 106 | 116 | 116 | 1'301 |
| Weisseschimmelkäse, überfett | 121 | 123 | 156 | 149 | 120 | 117 | 102 | 153 | 134 | 135 | 189 | 156 | 1'655 |
| Blau-, Grünschimmelkäse | 0 | 0 | 1 | 0 | 0 | 1 | 0 | 1 | 1 | 1 | 1 | 0 | 6 |
| Tomme | 171 | 177 | 187 | 180 | 177 | 169 | 172 | 168 | 181 | 155 | 155 | 152 | 2'044 |
| Vacherin Mont d'Or | 58 | 35 | 3 | 0 | 0 | 0 | 0 | 28 | 108 | 120 | 111 | 85 | 548 |
| Anderer Weichkäse mager, viertelfett | 60 | 35 | 106 | 33 | 4 | 2 | 58 | 73 | 98 | 79 | 81 | 47 | 676 |
| Anderer Weichkäse, halb- bis vollfett | 57 | 59 | 69 | 70 | 53 | 62 | 61 | 57 | 69 | 65 | 67 | 62 | 751 |
| Anderer Weichkäse, überfett | 26 | 40 | 44 | 36 | 28 | 37 | 22 | 30 | 37 | 31 | 31 | 36 | 398 |
| Weichkäse total | 582 | 576 | 687 | 575 | 481 | 500 | 524 | 613 | 744 | 692 | 751 | 653 | 7'378 |
| Appenzeller Käse | 461 | 554 | 584 | 660 | 724 | 789 | 827 | 857 | 839 | 811 | 829 | 920 | 8'855 |
| Tilsiter | 330 | 291 | 328 | 314 | 363 | 293 | 331 | 277 | 334 | 318 | 340 | 354 | 3'873 |
| Walliser Käse (Walliser Raclettekäse) | 207 | 198 | 222 | 227 | 216 | 121 | 63 | 36 | 215 | 241 | 160 | 193 | 2'099 |
| Schweizer Raclettekäse | 615 | 540 | 698 | 845 | 1'177 | 1'202 | 1'199 | 1'191 | 1'199 | 1'047 | 842 | 654 | 11'209 |
| Vacherin Fribourgeois | 137 | 85 | 84 | 103 | 136 | 191 | 245 | 257 | 342 | 336 | 274 | 237 | 2'427 |
| Tête de Moine | 201 | 142 | 150 | 152 | 183 | 136 | 197 | 216 | 238 | 221 | 182 | 195 | 2'213 |
| Jurakäse | 21 | 19 | 16 | 25 | 25 | 21 | 21 | 21 | 17 | 29 | 26 | 21 | 264 |
| Winzerkäse | 37 | 27 | 28 | 39 | 38 | 37 | 29 | 29 | 31 | 31 | 34 | 37 | 397 |
| Mutschli | 39 | 32 | 41 | 36 | 34 | 46 | 39 | 38 | 65 | 62 | 44 | 42 | 518 |
| Alpkäse halbhart | 0 | 2 | 0 | 0 | 1 | 14 | 25 | 23 | 1'307 | 616 | 50 | 0 | 2'038 |
| Bündner Bergkäse | 89 | 86 | 87 | 85 | 80 | 63 | 37 | 17 | 19 | 37 | 50 | 75 | 725 |
| Berg- und Schnittkäse halbhart | 205 | 186 | 206 | 215 | 197 | 176 | 181 | 143 | 163 | 173 | 195 | 208 | 2'248 |
| St. Paulin Suisse | 40 | 57 | 57 | 53 | 62 | 55 | 59 | 40 | 57 | 51 | 59 | 61 | 651 |
| Schweizer Edamer | 33 | 16 | 32 | 10 | 46 | 32 | 32 | 23 | 21 | 15 | 6 | 45 | 311 |
| Kaltgereifte Käse | 2 | 0 | 3 | 0 | 1 | 0 | 0 | 2 | 0 | 0 | 0 | 0 | 8 |
| Halbhartkäse mit Schimmelbildung | 15 | 14 | 19 | 22 | 19 | 37 | 18 | 13 | 30 | 26 | 19 | 18 | 250 |
| Conveniencekäse | 113 | 104 | 78 | 72 | 214 | 213 | 235 | 156 | 135 | 171 | 150 | 170 | 1'811 |
| Schmelzrohware, vollfett | 117 | 133 | 253 | 255 | 115 | 88 | 77 | 100 | 112 | 138 | 116 | 129 | 1'633 |
| Anderer Halbhartkäse, mager bis viertelfett * | 62 | 77 | 129 | 95 | 80 | 59 | 42 | 84 | 81 | 93 | 78 | 82 | 962 |
| Anderer Halbhartkäse, halb- bis vollfett | 900 | 857 | 1'116 | 1'132 | 938 | 931 | 795 | 789 | 1'002 | 1'213 | 960 | 934 | 11'567 |
| Anderer Halbhartkäse, überfett | 183 | 185 | 244 | 239 | 221 | 175 | 198 | 188 | 188 | 215 | 223 | 232 | 2'491 |
| Halbhartkäse total | 3'808 | 3'607 | 4'376 | 4'579 | 4'869 | 4'679 | 4'652 | 4'499 | 6'397 | 5'845 | 4'641 | 4'608 | 56'560 |
| Emmentaler | 2'183 | 1'875 | 2'071 | 2'240 | 2'543 | 2'180 | 1'969 | 2'020 | 2'104 | 2'152 | 2'140 | 2'245 | 25'722 |
| Switzerland Swiss | 255 | 234 | 265 | 269 | 286 | 274 | 323 | 251 | 222 | 254 | 157 | 182 | 2'972 |
| Gruyère | 2'359 | 2'258 | 2'625 | 2'659 | 2'983 | 2'622 | 2'405 | 2'180 | 2'099 | 2'205 | 1'937 | 2'108 | 28'420 |
| Alpkäse hart | 0 | 0 | 0 | 0 | 45 | 129 | 134 | 186 | 983 | 407 | 32 | 0 | 1'916 |
| Anderer Hartkäse, mager bis viertelfett ** | 2 | 2 | 33 | 10 | 35 | 63 | 19 | 11 | 26 | 39 | 102 | 36 | 378 |
| Anderer Hartkäse, halb- bis vollfett | 759 | 686 | 802 | 948 | 892 | 695 | 648 | 545 | 549 | 525 | 525 | 594 | 8'168 |
| Anderer Hartkäse, überfett | 5 | 2 | 7 | 29 | 10 | 21 | 22 | 13 | 8 | 6 | 4 | 3 | 130 |
| Hartkäse total | 5'563 | 5'057 | 5'803 | 6'155 | 6'794 | 5'984 | 5'520 | 5'186 | 5'991 | 5'588 | 4'897 | 5'168 | 67'706 |
| Sbrinz | 166 | 160 | 180 | 153 | 182 | 166 | 129 | 121 | 146 | 165 | 144 | 151 | 1'863 |
| Extra Hartkäse total | 166 | 160 | 180 | 153 | 182 | 166 | 129 | 121 | 146 | 165 | 144 | 151 | 1'863 |
| Reiner Ziegenkäse | 26 | 41 | 69 | 99 | 107 | 94 | 86 | 78 | 115 | 114 | 36 | 29 | 894 |
| Reiner Schafkäse | 15 | 18 | 21 | 26 | 27 | 24 | 22 | 19 | 15 | 13 | 12 | 13 | 225 |
| Spezialprodukte total | 42 | 59 | 90 | 125 | 134 | 118 | 108 | 97 | 130 | 127 | 48 | 42 | 1'120 |
| Total alle Käsesorten | 13'417 | 12'757 | 14'743 | 15'452 | 16'584 | 15'495 | 14'774 | 14'364 | 16'765 | 15'935 | 13'736 | 14'254 | 178'276 |

* inkl. Lokalspezialitäten

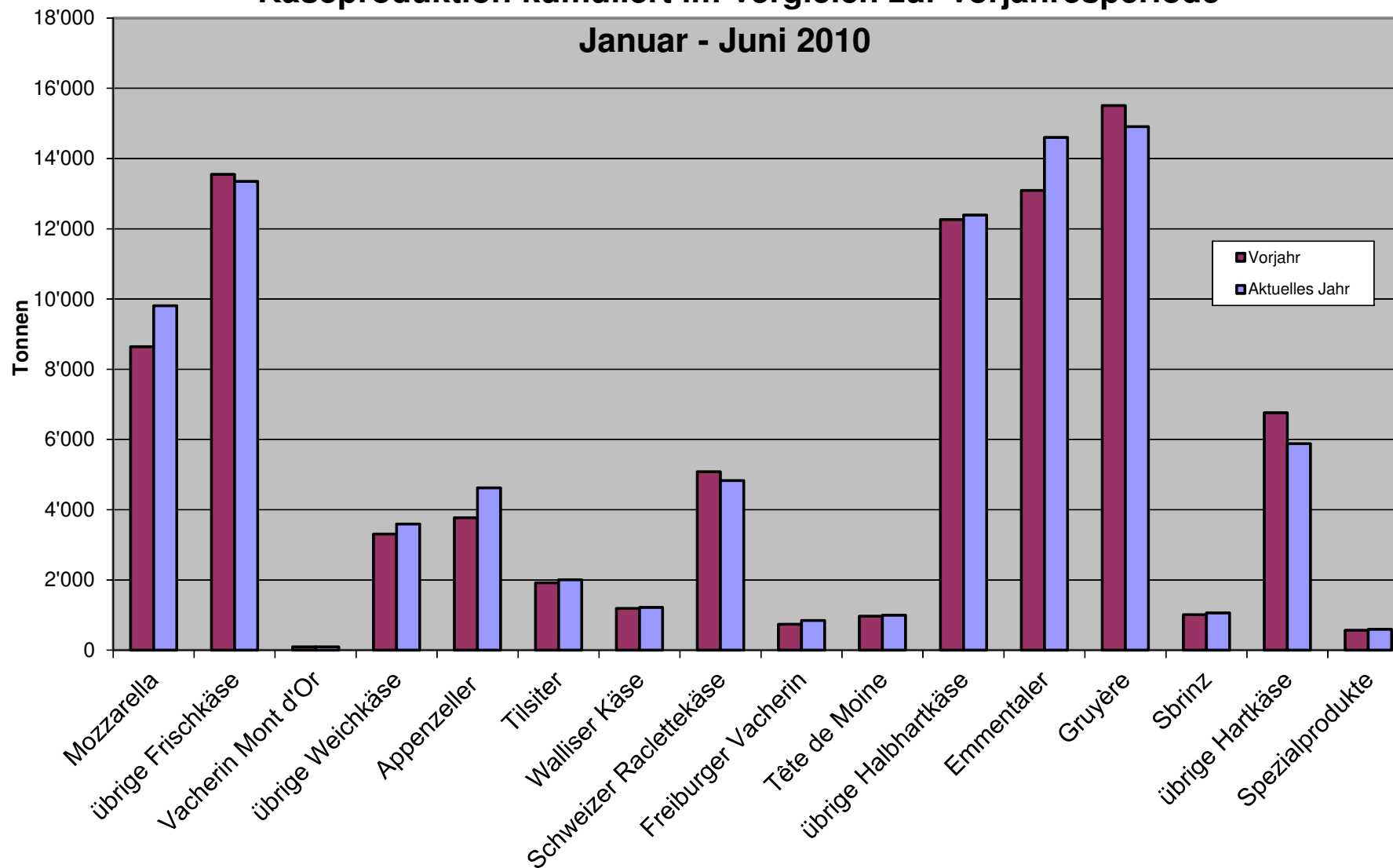
** inkl. Schmelzrohware und Lokalspezialitäten

Käseproduktion Juni 2010 im Vergleich zum Vorjahresmonat

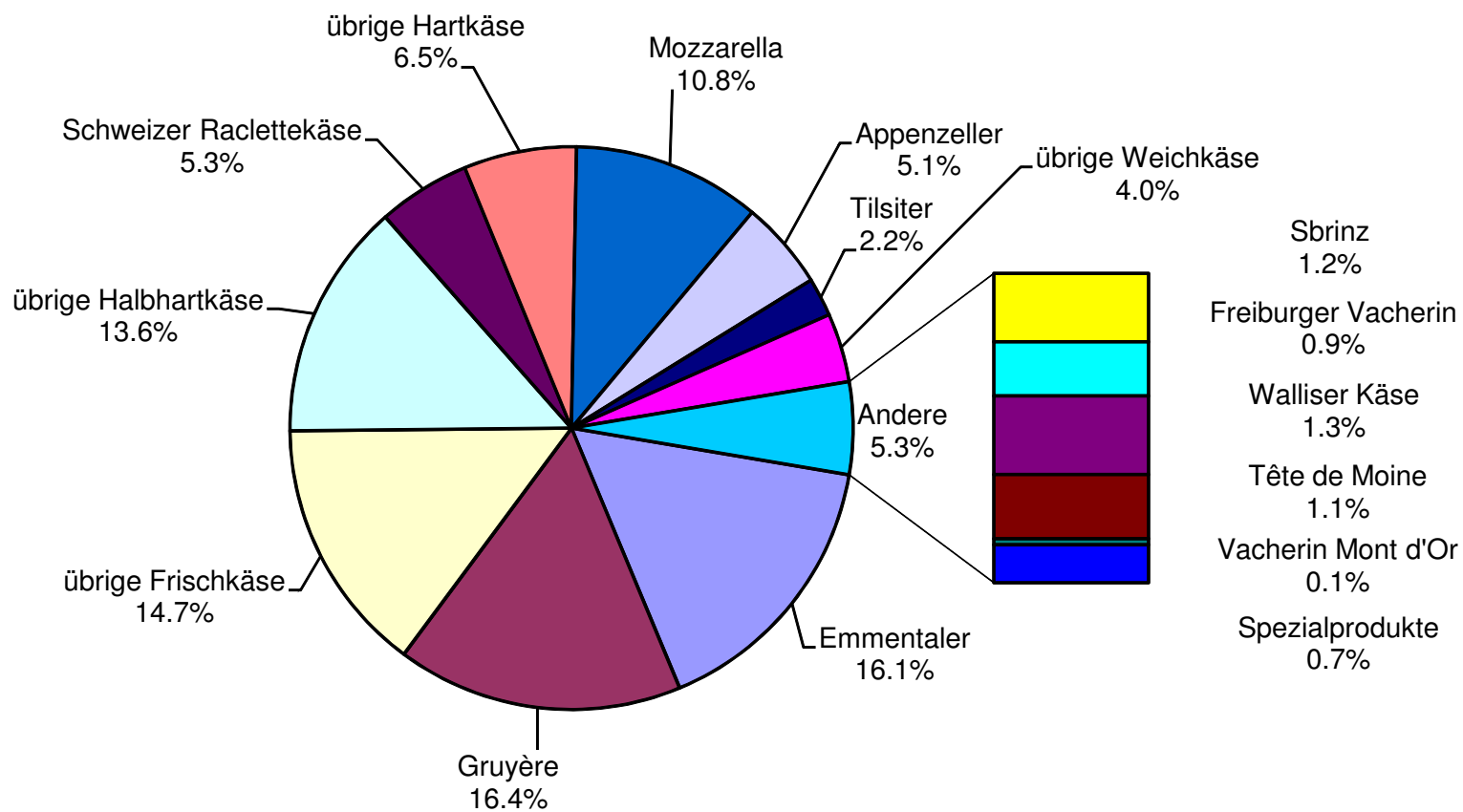


Käseproduktion kumuliert im Vergleich zur Vorjahresperiode

Januar - Juni 2010



Käseproduktion Januar - Juni 2010 Total 90'798 Tonnen



Konsummilchproduktion

| Milchart | Monatliche Produktion | | Differenz zum Vorjahres-Monat | | Kumulierte Produktion | | Differenz zur Vorjahresperiode | |
|-------------------------------------|-----------------------|------------------|-------------------------------|------------|-------------------------|-------------------------|--------------------------------|------------|
| | <i>Juni 2009</i> | <i>Juni 2010</i> | | | <i>Jan. - Jun. 2009</i> | <i>Jan. - Jun. 2010</i> | | |
| | Tonnen | Tonnen | Tonnen | (%) | Tonnen | Tonnen | Tonnen | (%) |
| Rohmilch | 606 | 489 | -117 | -19.3 | 5'190 | 4'451 | -739 | -14.2 |
| Fettangereicherte Milch past | 0 | 0 | 0 | | 0 | 0 | 0 | |
| Fettangereicherte Milch UHT | 93 | 89 | -4 | -4.3 | 499 | 488 | -11 | -2.2 |
| Vollmilch past. | 4'813 | 3'973 | -840 | -17.5 | 30'394 | 27'450 | -2'944 | -9.7 |
| Vollmilch UHT | 1'603 | 1'769 | 166 | 10.4 | 11'608 | 11'717 | 109 | 0.9 |
| Standardisierte Vollmilch past. 35g | 2'720 | 3'560 | 840 | 30.9 | 15'734 | 18'790 | 3'056 | 19.4 |
| Standardisierte Vollmilch UHT 35g | 11'426 | 12'196 | 770 | 6.7 | 78'476 | 77'288 | -1'188 | -1.5 |
| teiltrahmte Milch past. | 6'715 | 6'803 | 88 | 1.3 | 40'476 | 40'546 | 70 | 0.2 |
| teiltrahmte Milch UHT | 9'073 | 11'407 | 2'334 | 25.7 | 51'434 | 62'154 | 10'720 | 20.8 |
| Trinkmagermilch past. | 2 | 0 | -2 | -100.0 | 5 | 1 | -4 | -80.0 |
| Trinkmagermilch UHT | 1'295 | 1'302 | 7 | 0.5 | 7'256 | 7'314 | 58 | 0.8 |
| Total Konsummilch | 38'346 | 41'588 | 3'242 | 8.5 | 241'072 | 250'199 | 9'127 | 3.8 |

Butterproduktion

| | Monatliche Produktion | | Differenz zum Vorjahres-Monat | | Kumulierte Produktion | | Differenz zur Vorjahresperiode | |
|--|-----------------------|------------------|-------------------------------|------|-------------------------|-------------------------|--------------------------------|-----|
| | <i>Juni 2009</i> | <i>Juni 2010</i> | | | <i>Jan. - Jun. 2009</i> | <i>Jan. - Jun. 2010</i> | | |
| | Tonnen | Tonnen | Tonnen | (%) | Tonnen | Tonnen | Tonnen | (%) |
| | 3'684 | 3'520 | -164 | -4.5 | 28'023 | 28'587 | 564 | 2.0 |

Produktion von Milchspezialitäten

Konsumrahm

| | Monatliche Produktion | | Differenz zum Vorjahres-Monat | | Kumulierte Produktion | | Differenz zur Vorjahresperiode | |
|-------------------------|-----------------------|------------------|-------------------------------|-------------|-------------------------|-------------------------|--------------------------------|------------|
| | <i>Juni 2009</i> | <i>Juni 2010</i> | Tonnen | (%) | <i>Jan. - Jun. 2009</i> | <i>Jan. - Jun. 2010</i> | Tonnen | (%) |
| | Tonnen | Tonnen | | | Tonnen | Tonnen | | |
| Doppelrahm | 56 | 65 | 9 | 16.1 | 297 | 330 | 33 | 11.1 |
| Vollrahm 35% | 2'326 | 2'383 | 57 | 2.5 | 13'420 | 13'885 | 465 | 3.5 |
| Halbrahm | 1'105 | 992 | -113 | -10.2 | 7'078 | 6'837 | -241 | -3.4 |
| Kaffeerahm | 1'894 | 1'829 | -65 | -3.4 | 12'276 | 12'010 | -266 | -2.2 |
| Total Konsumrahm | 5'381 | 5'269 | -112 | -2.1 | 33'071 | 33'062 | -9 | 0.0 |

Andere Milchspezialitäten

| | Monatliche Produktion | | Differenz zum Vorjahres-Monat | | Kumulierte Produktion | | Differenz zur Vorjahresperiode | |
|-----------------|-----------------------|------------------|-------------------------------|------|-------------------------|-------------------------|--------------------------------|-------|
| | <i>Juni 2009</i> | <i>Juni 2010</i> | Tonnen | (%) | <i>Jan. - Jun. 2009</i> | <i>Jan. - Jun. 2010</i> | Tonnen | (%) |
| | Tonnen | Tonnen | | | Tonnen | Tonnen | | |
| Sauermilch | 659 | 677 | 18 | 2.7 | 3'457 | 3'621 | 164 | 4.7 |
| Sauerrahm | 200 | 221 | 21 | 10.5 | 1'198 | 1'300 | 102 | 8.5 |
| Dessertprodukte | 1'638 | 1'938 | 300 | 18.3 | 11'014 | 11'719 | 705 | 6.4 |
| Milchgetränke | 5'672 | 6'290 | 618 | 10.9 | 38'980 | 32'628 | -6'352 | -16.3 |
| Jogurt | 11'967 | 12'574 | 607 | 5.1 | 72'307 | 71'350 | -957 | -1.3 |
| Kefir | 15 | 14 | -1 | -6.7 | 95 | 77 | -18 | -18.9 |
| Speiseeis | 2'407 | 2'753 | 346 | 14.4 | 13'635 | 14'548 | 913 | 6.7 |

Produktion Milchpulver und Milchkondensat

| | Monatliche Produktion | | Differenz zum Vorjahres-Monat | | Kumulierte Produktion | | Differenz zur Vorjahresperiode | |
|---|-----------------------|------------------|-------------------------------|-------|-------------------------|-------------------------|--------------------------------|-------|
| | <i>Juni 2009</i> | <i>Juni 2010</i> | | | <i>Jan. - Jun. 2009</i> | <i>Jan. - Jun. 2010</i> | | |
| | Tonnen | Tonnen | Tonnen | (%) | Tonnen | Tonnen | Tonnen | (%) |
| Vollmilchpulver | 1'347 | 1'524 | 177 | 13.1 | 7'652 | 8'051 | 399 | 5.2 |
| Teilentrahmtes Milchpulver | 331 | 453 | 122 | 36.9 | 2'129 | 1'998 | -131 | -6.2 |
| Fettangereichertes Milchpulver & Rahmpulver | 6 | 33 | 27 | 450.0 | 94 | 126 | 32 | 34.0 |
| Magermilchpulver | 2'943 | 1'543 | -1'400 | -47.6 | 22'934 | 21'674 | -1'260 | -5.5 |
| Buttermilchpulver | 38 | 7 | -31 | -81.6 | 86 | 67 | -19 | -22.1 |
| Molkenpulver | 121 | 92 | -29 | -24.0 | 501 | 375 | -126 | -25.1 |
| Milchkondensat | 242 | 286 | 44 | 18.2 | 1'138 | 1'373 | 235 | 20.7 |

Käseexport nach Produkten/Gruppen

| Käsesorte / Kategorie | Monatliche Exporte | | Differenz zum Vorjahres-Monat | | Kumulierte Exporte | | Differenz zur Vorjahresperiode | |
|-------------------------------------|----------------------------|----------------------------|-------------------------------|--------------|-----------------------------------|-----------------------------------|--------------------------------|--------------|
| | <i>Juni 2009</i> Tonnen | <i>Juni 2010</i> Tonnen | Tonnen | (%) | <i>Jan. - Jun. 2009</i> Tonnen | <i>Jan. - Jun. 2010</i> Tonnen | Tonnen | (%) |
| Frischkäse inkl. Quark total | 117.5 | 208.5 | 91.0 | 77.5 | 898.3 | 1'561.0 | 662.7 | 73.8 |
| Vacherin Mont d'Or | 0.5 | 0.0 | -0.5 | 0.0 | 7.8 | 8.0 | 0.2 | 2.9 |
| Weichkäse andere | 45.9 | 91.0 | 45.1 | 98.2 | 550.2 | 781.2 | 231.0 | 42.0 |
| Weichkäse total | 46.4 | 91.0 | 44.6 | 96.0 | 558.0 | 789.2 | 231.2 | 41.4 |
| Appenzeller Käse | 344.3 | 313.7 | -30.6 | -8.9 | 2'388.3 | 2'665.5 | 277.1 | 11.6 |
| Tilsiter | 16.4 | 16.3 | -0.1 | -0.3 | 213.1 | 189.2 | -23.9 | -11.2 |
| Raclette | 15.8 | 18.1 | 2.3 | 14.5 | 234.8 | 275.3 | 40.6 | 17.3 |
| Vacherin Fribourgeois | 9.5 | 9.6 | 0.0 | 0.5 | 115.6 | 120.0 | 4.4 | 3.8 |
| Tête de Moine | 55.3 | 59.0 | 3.7 | 6.7 | 489.5 | 500.7 | 11.2 | 2.3 |
| Halbhartkäse andere | 325.1 | 361.2 | 36.2 | 11.1 | 2'865.3 | 2'072.0 | -793.4 | -27.7 |
| Halbhartkäse total | 766.3 | 778.0 | 11.6 | 1.5 | 6'306.7 | 5'822.6 | -484.0 | -7.7 |
| Emmentaler | 1'448.8 | 1'403.2 | -45.5 | -3.1 | 9'223.1 | 9'115.8 | -107.3 | -1.2 |
| Gruyère | 790.8 | 719.9 | -70.9 | -9.0 | 4'775.5 | 5'296.1 | 520.6 | 10.9 |
| Switzerland Swiss | 167.5 | 132.0 | -35.5 | -21.2 | 991.7 | 537.8 | -453.8 | -45.8 |
| Hartkäse übrige | 244.3 | 158.2 | -86.1 | -35.3 | 851.5 | 1'360.1 | 508.6 | 59.7 |
| Hartkäse total | 2'651.4 | 2'413.4 | -238.0 | -9.0 | 15'841.8 | 16'309.9 | 468.1 | 3.0 |
| Sbrinz | 25.0 | 17.3 | -7.7 | -30.7 | 140.6 | 114.5 | -26.2 | -18.6 |
| Extra Hartkäse total | 25.0 | 17.3 | -7.7 | -30.7 | 140.6 | 114.5 | -26.2 | -18.6 |
| Schmelzkäse total | 330.7 | 244.1 | -86.6 | -26.2 | 1'855.8 | 1'512.5 | -343.2 | -18.5 |
| Fertigfondue | 227.3 | 231.5 | 4.2 | 1.9 | 1'663.0 | 1'608.9 | -54.1 | -3.3 |
| andere Käse total | 145.1 | 292.7 | 147.7 | 101.8 | 803.0 | 1'284.6 | 481.6 | 60.0 |
| Total | 4'309.8 | 4'276.5 | -33.2 | -0.8 | 28'067.1 | 29'003.2 | 936.1 | 3.3 |

Quelle: OZD

Käseexport nach Ländern

Juni 2010

| Land | Emmentaler | | Gruyère | | Sbrinz | | Switzerland Swiss | | übrige Hartkäse | | Hartkäse total | | Appenzeller Käse | | Vacherin Fribourgeois | | Raclette | | Tête de Moine | | Tilsiter | | übrige Halbhartkäse | | Halbhartkäse total | | Frischkäse inkl. Quark | | Vacherin Mont d'Or | | Weichkäse | | Schmelzkäse | | andere Käse | | Fertigfondue (Quelle: SESKY) | | TOTAL | | |
|--|------------|-------|---------|-------|--------|---------|-------------------|-------|-----------------|------|----------------|-------|------------------|-------|-----------------------|------|----------|-------|---------------|-------|----------|---|---------------------|---|--------------------|---|------------------------|---|--------------------|---|-----------|---|-------------|---|-------------|---|------------------------------|-------|---------|---|--|
| | t | t | t | t | t | t | t | t | t | t | t | t | t | t | t | t | t | t | t | t | t | t | t | t | t | t | t | t | t | t | t | t | t | t | t | t | t | t | t | t | |
| EUROPA | | | | | | | | | | | | | | | | | | | | | | | | | | | | | | | | | | | | | | | | | |
| Deutschland | 213.4 | 139.1 | * | * | | 112.2 | 464.6 | 226.6 | 2.0 | 4.8 | 17.4 | 11.3 | 235.5 | 497.7 | 94.7 | 0.0 | 54.4 | 149.0 | 2.7 | 235.2 | 32.0 | | | | | | | | | | | | | | | | | | 1'381.2 | | |
| Frankreich | 181.2 | 108.1 | * | * | | 1.2 | 290.6 | 39.8 | 5.8 | 1.1 | 20.4 | * | 4.9 | 72.1 | 0.3 | * | 26.9 | 27.2 | 2.6 | 1.0 | 20.5 | | | | | | | | | | | | | | | | | | 414.0 | | |
| Italien | 819.6 | 21.5 | * | * | | 25.8 | 866.9 | 0.4 | * | * | 1.4 | * | 44.5 | 46.3 | 81.2 | 0.0 | 6.2 | 87.4 | 164.3 | 45.5 | 4.1 | | | | | | | | | | | | | | | | | | 1'214.5 | | |
| BeNeLux | 68.4 | 55.0 | * | * | | 0.2 | 123.6 | 5.0 | 0.5 | 2.4 | 6.6 | 0.1 | 1.3 | 15.9 | 0.0 | * | 1.3 | 1.3 | 27.1 | 1.2 | 65.3 | | | | | | | | | | | | | | | | | | 234.4 | | |
| Grossbritannien | 17.7 | 41.0 | * | * | | 2.1 | 60.9 | 1.4 | * | * | 0.4 | * | 0.0 | 1.8 | 0.0 | * | 0.0 | 0.0 | 1.1 | 0.2 | 2.5 | | | | | | | | | | | | | | | | | | 66.4 | | |
| Spanien/Portugal | 6.5 | 35.2 | * | * | | 1.0 | 42.8 | * | * | * | * | * | 0.0 | 0.0 | 0.0 | * | 0.0 | 0.0 | 0.0 | 0.0 | 0.0 | | | | | | | | | | | | | | | | | | 42.8 | | |
| Europa nicht zugeordnet / übriges Europa (Fertigfondue übrige Länder ganze Welt) | 31.4 | 57.3 | 16.1 | 1.0 | 5.4 | 111.1 | 32.8 | 0.7 | 2.2 | 9.4 | 3.9 | 70.1 | 119.0 | 2.4 | 0.0 | 0.8 | 3.2 | 0.5 | 7.7 | 1.6 | | | | | | | | | | | | | | | | | | | 243.1 | | |
| TOTAL EUROPA | 1'338.2 | 457.2 | 16.1 | 1.0 | 147.9 | 1'960.4 | 306.0 | 9.0 | 10.6 | 55.6 | 15.2 | 356.3 | 752.7 | 178.6 | 0.0 | 89.6 | 268.1 | 198.2 | 290.8 | 126.1 | | | | | | | | | | | | | | | | | | | 3'596.4 | | |
| Andere Länder | | | | | | | | | | | | | | | | | | | | | | | | | | | | | | | | | | | | | | | | | |
| Kanada | 9.1 | * | * | * | 0.0 | 9.1 | 0.3 | * | * | 0.2 | * | 0.0 | 0.5 | 0.0 | * | 0.0 | 0.0 | 33.9 | 0.0 | 32.9 | | | | | | | | | | | | | | | | | | 76.4 | | | |
| USA | 29.6 | 177.6 | * | * | 8.5 | 215.7 | 5.8 | 0.5 | 3.8 | 2.5 | * | 4.0 | 16.6 | 0.0 | * | 0.3 | 0.3 | 8.8 | 0.5 | 11.7 | | | | | | | | | | | | | | | | | | | 253.5 | | |
| Kanada / USA nicht zugeordnet/ andere Länder | 26.3 | 85.2 | 1.3 | 131.1 | 1.8 | 245.5 | 1.6 | 0.1 | 3.8 | 0.7 | 1.1 | 0.9 | 8.1 | 29.9 | 0.0 | 1.1 | 31.0 | 3.3 | 1.5 | 60.8 | | | | | | | | | | | | | | | | | | 350.1 | | | |
| TOTAL ANDERE LÄNDER | 65.0 | 262.7 | 1.3 | 131.1 | 10.3 | 470.3 | 7.7 | 0.6 | 7.6 | 3.4 | 1.1 | 4.9 | 25.2 | 29.9 | 0.0 | 1.4 | 31.3 | 45.9 | 1.9 | 105.4 | | | | | | | | | | | | | | | | | | 680.1 | | | |
| TOTAL | 1'403.2 | 719.9 | 17.3 | 132.0 | 158.2 | 2'430.7 | 313.7 | 9.6 | 18.1 | 59.0 | 16.3 | 361.2 | 778.0 | 208.5 | 0.0 | 91.0 | 299.5 | 244.1 | 292.7 | 231.5 | | | | | | | | | | | | | | | | | | | 4'276.5 | | |

* Aus Datenschutzgründen sind Käseexporte mit weniger als drei Exporteuren nicht nach Ländern zugeordnet (Zusammenzug in 'Europa nicht zugeordnet' bzw. Kanada USA nicht zugeordnet/andere Länder)

Quelle: OZD

Käseexport nach Ländern

Juni 2009

| Land | Käseexport nach Ländern | | | | | | | | | | | | | | | | | | | | TOTAL |
|---|-------------------------|-------|------|-------|-------|---------|-------|-----|------|------|------|-------|-------|-------|-----|------|-------|-------|-------|-------|-------|
| | t | t | t | t | t | t | t | t | t | t | t | t | t | t | t | t | t | t | t | t | |
| EUROPA | | | | | | | | | | | | | | | | | | | | | |
| Deutschland | 216.5 | 170.2 | * | * | 62.1 | 448.8 | 276.8 | 0.9 | 5.8 | 23.1 | 13.0 | 236.9 | 556.4 | 54.1 | 0.0 | 22.6 | 76.7 | 10.3 | 131.9 | 2.8 | |
| Frankreich | 133.8 | 105.3 | * | * | 10.4 | 249.4 | 31.8 | 5.7 | 1.2 | 15.2 | * | 2.6 | 56.4 | 0.1 | * | 19.6 | 19.7 | 0.5 | 0.7 | 14.4 | |
| Italien | 859.8 | 12.5 | * | * | 155.4 | 1'027.6 | 0.8 | * | * | 1.6 | * | 2.3 | 4.7 | 0.0 | 0.0 | 0.0 | 0.0 | 225.4 | 2.1 | 2.2 | |
| BeNeLux | 64.0 | 58.5 | * | * | 0.6 | 123.1 | 6.4 | 0.4 | 2.0 | 4.4 | 0.2 | 0.8 | 14.3 | 0.0 | * | 3.0 | 3.0 | 35.5 | 1.5 | 86.1 | |
| Grossbritannien | 24.3 | 49.0 | * | * | 6.0 | 79.3 | 1.8 | * | * | 0.2 | * | 0.1 | 2.1 | 0.0 | * | 0.2 | 0.2 | 0.0 | 0.2 | 0.5 | |
| Spanien/Portugal | 10.6 | 23.9 | * | * | 0.0 | 34.5 | * | * | * | * | * | 0.2 | 0.2 | 0.0 | * | 0.0 | 0.0 | 3.1 | 0.0 | 0.0 | |
| Europa nicht zugeordnet / übriges Europa | 29.9 | 43.7 | 24.4 | 48.9 | 4.4 | 151.3 | 18.8 | 0.7 | 1.6 | 8.7 | 2.0 | 71.8 | 103.6 | 0.1 | 0.5 | 0.0 | 0.6 | 0.1 | 6.6 | 44.0 | |
| TOTAL EUROPA | 1'338.8 | 463.1 | 24.4 | 48.9 | 238.9 | 2'114.1 | 336.4 | 7.7 | 10.5 | 53.1 | 15.2 | 314.8 | 737.7 | 54.3 | 0.5 | 45.4 | 100.2 | 274.9 | 143.0 | 150.1 | |
| Andere Länder | | | | | | | | | | | | | | | | | | | | | |
| Kanada | 40.6 | * | * | * | 0.6 | 41.1 | 2.7 | * | * | 0.7 | * | 5.1 | 8.6 | 0.0 | * | 0.0 | 0.0 | 0.0 | 0.0 | 30.1 | |
| USA | 40.7 | 199.6 | * | * | 0.3 | 240.6 | 3.8 | 0.7 | 2.4 | 0.9 | * | 2.3 | 10.1 | 0.0 | * | 0.4 | 0.4 | 7.4 | 0.2 | 5.2 | |
| Kanada / USA nicht zugeordnet/ andere Länder | 28.7 | 128.1 | 0.7 | 118.6 | 4.5 | 280.7 | 1.4 | 1.1 | 2.9 | 0.6 | 1.2 | 2.8 | 10.0 | 63.2 | 0.0 | 0.1 | 63.3 | 48.4 | 1.9 | 41.9 | |
| TOTAL ANDERE LÄNDER | 110.0 | 327.7 | 0.7 | 118.6 | 5.4 | 562.4 | 7.9 | 1.8 | 5.3 | 2.2 | 1.2 | 10.3 | 28.7 | 63.2 | 0.0 | 0.5 | 63.7 | 55.8 | 2.1 | 77.2 | |
| TOTAL | 1'448.8 | 790.8 | 25.0 | 167.5 | 244.3 | 2'676.5 | 344.3 | 9.5 | 15.8 | 55.3 | 16.4 | 325.1 | 766.3 | 117.5 | 0.5 | 45.9 | 163.9 | 330.7 | 145.1 | 227.3 | |

* Aus Datenschutzgründen sind Käseexporte mit weniger als drei Exporteuren nicht nach Ländern zugeordnet (Zusammenzug in 'Europa nicht zugeordnet' bzw. Kanada USA nicht zugeordnet/andere Länder)

Quelle: OZD

Käseexport nach Ländern, kumuliert

Januar bis Juni 2010

| | Emmentaler | | Gruyère | | Sbrinz | | Switzerland Swiss | | übrige Hartkäse | | Hartkäse total | | Appenzeller Käse | | Vacherin Fribourgeois | | Raclette | | Tête de Moine | | Tilsiter | | übrige Halbhartkäse | | Halbhartkäse total | | Frischkäse inkl. Quark | | Vacherin Mont d'Or | | übrige Weichkäse | | Weichkäse total | | Schmelzkäse | | andere Käse | | Fertigfondue (Quelle: SE55K) | | TOTAL | | | |
|---|------------|---------|---------|-------|---------|----------|-------------------|-------|-----------------|-------|----------------|---------|------------------|---------|-----------------------|-------|----------|---------|---------------|---------|----------|---|---------------------|---|--------------------|---|------------------------|---|--------------------|---|------------------|---|-----------------|---|-------------|---|-------------|---|------------------------------|---|-------|----------|--|--|
| Land | t | t | t | t | t | t | t | t | t | t | t | t | t | t | t | t | t | t | t | t | t | t | t | t | t | t | t | t | t | t | t | t | t | t | t | t | t | t | t | t | t | | | |
| EUROPA | | | | | | | | | | | | | | | | | | | | | | | | | | | | | | | | | | | | | | | | | | | | |
| Deutschland | 1'621.4 | 1'140.2 | * | * | 829.2 | 3'590.8 | 2'049.4 | 26.5 | 73.2 | 236.2 | 151.5 | 1'600.6 | 4'137.4 | 381.1 | 0.1 | 561.6 | 942.9 | 19.4 | 914.5 | 140.2 | | | | | | | | | | | | | | | | | | | | | | 9745.2 | | |
| Frankreich | 862.7 | 971.7 | * | * | 31.3 | 1'865.7 | 289.1 | 72.0 | 46.7 | 141.7 | * | 36.1 | 585.7 | 0.8 | * | 139.5 | 140.3 | 8.9 | 29.8 | 235.1 | | | | | | | | | | | | | | | | | | | | | | 2'865.4 | | |
| Italien | 4'989.0 | 133.1 | * | * | 408.1 | 5'530.3 | 2.9 | * | * | 13.1 | * | 47.3 | 63.3 | 380.1 | 0.0 | 16.2 | 396.4 | 1'141.3 | 142.1 | 16.9 | | | | | | | | | | | | | | | | | | | | | | 7'290.2 | | |
| BeNeLux | 517.3 | 402.5 | * | * | 4.1 | 924.0 | 41.3 | 7.5 | 60.7 | 35.7 | 1.2 | 9.3 | 155.7 | 0.0 | * | 11.9 | 11.9 | 142.3 | 50.8 | 506.8 | | | | | | | | | | | | | | | | | | | | | | 1'791.5 | | |
| Grossbritannien | 126.0 | 300.9 | * | * | 20.5 | 447.4 | 10.1 | * | * | 1.3 | * | 0.5 | 11.9 | 0.0 | * | 0.3 | 0.3 | 11.0 | 0.7 | 21.7 | | | | | | | | | | | | | | | | | | | | | | 493.0 | | |
| Spanien/Portugal | 51.8 | 145.1 | * | * | 3.3 | 200.2 | * | * | * | * | * | 0.0 | 0.0 | 0.0 | * | 0.0 | 0.0 | 10.1 | 0.3 | 0.0 | | | | | | | | | | | | | | | | | | | | | | 210.6 | | |
| Europa nicht zugeordnet / übriges Europa | 284.5 | 366.8 | 107.0 | 30.2 | 27.2 | 815.7 | 225.7 | 6.7 | 26.7 | 57.7 | 28.0 | 347.7 | 692.3 | 18.1 | 7.7 | 42.4 | 68.1 | 2.3 | 27.9 | 20.1 | | | | | | | | | | | | | | | | | | | | | | 1'626.4 | | |
| TOTAL EUROPA | 8'452.7 | 3'460.4 | 107.0 | 30.2 | 1'323.7 | 13'374.1 | 2'618.5 | 112.7 | 207.3 | 485.7 | 180.6 | 2'041.4 | 5'646.2 | 780.1 | 7.8 | 771.9 | 1'559.8 | 1'335.4 | 1'166.1 | 940.7 | | | | | | | | | | | | | | | | | | | | | | 24'022.4 | | |
| Andere Länder | | | | | | | | | | | | | | | | | | | | | | | | | | | | | | | | | | | | | | | | | | | | |
| Kanada | 163.0 | * | * | * | 1.6 | 164.6 | 6.5 | * | * | 3.3 | * | 5.9 | 15.7 | 0.0 | * | 0.0 | 0.0 | 85.7 | 0.0 | 144.4 | | | | | | | | | | | | | | | | | | | | | | 410.5 | | |
| USA | 239.9 | 1'176.7 | * | * | 16.3 | 1'432.9 | 26.3 | 2.9 | 29.6 | 7.3 | * | 16.9 | 82.9 | 0.0 | * | 1.9 | 1.9 | 19.6 | 0.7 | 79.1 | | | | | | | | | | | | | | | | | | | | | | 1'617.1 | | |
| Kanada / USA nicht zugeordnet/ andere Länder | 260.3 | 658.9 | 7.4 | 507.7 | 18.5 | 1'452.8 | 14.1 | 4.4 | 38.4 | 4.5 | 8.6 | 7.8 | 77.8 | 780.8 | 0.2 | 7.4 | 788.4 | 71.8 | 117.8 | 444.7 | | | | | | | | | | | | | | | | | | | | | | 2'953.2 | | |
| TOTAL ANDERE LÄNDER | 663.1 | 1'835.7 | 7.4 | 507.7 | 36.4 | 3'050.3 | 46.9 | 7.3 | 68.0 | 15.0 | 8.6 | 30.6 | 176.5 | 780.8 | 0.2 | 9.3 | 790.3 | 177.1 | 118.5 | 668.2 | | | | | | | | | | | | | | | | | | | | | | 4'980.8 | | |
| TOTAL | 9'115.8 | 5'296.1 | 114.5 | 537.8 | 1'360.1 | 16'424.4 | 2'665.5 | 120.0 | 275.3 | 500.7 | 189.2 | 2'072.0 | 5'822.6 | 1'561.0 | 8.0 | 781.2 | 2'350.1 | 1'512.5 | 1'284.6 | 1'608.9 | | | | | | | | | | | | | | | | | | | | | | 29'003.2 | | |

* Aus Datenschutzgründen sind Käseexporte mit weniger als drei Exporteuren nicht nach Ländern zugeordnet (Zusammenzug in 'Europa nicht zugeordnet' bzw. Kanada USA nicht zugeordnet/andere Länder)

Quelle: OZD

Käseexport nach Ländern

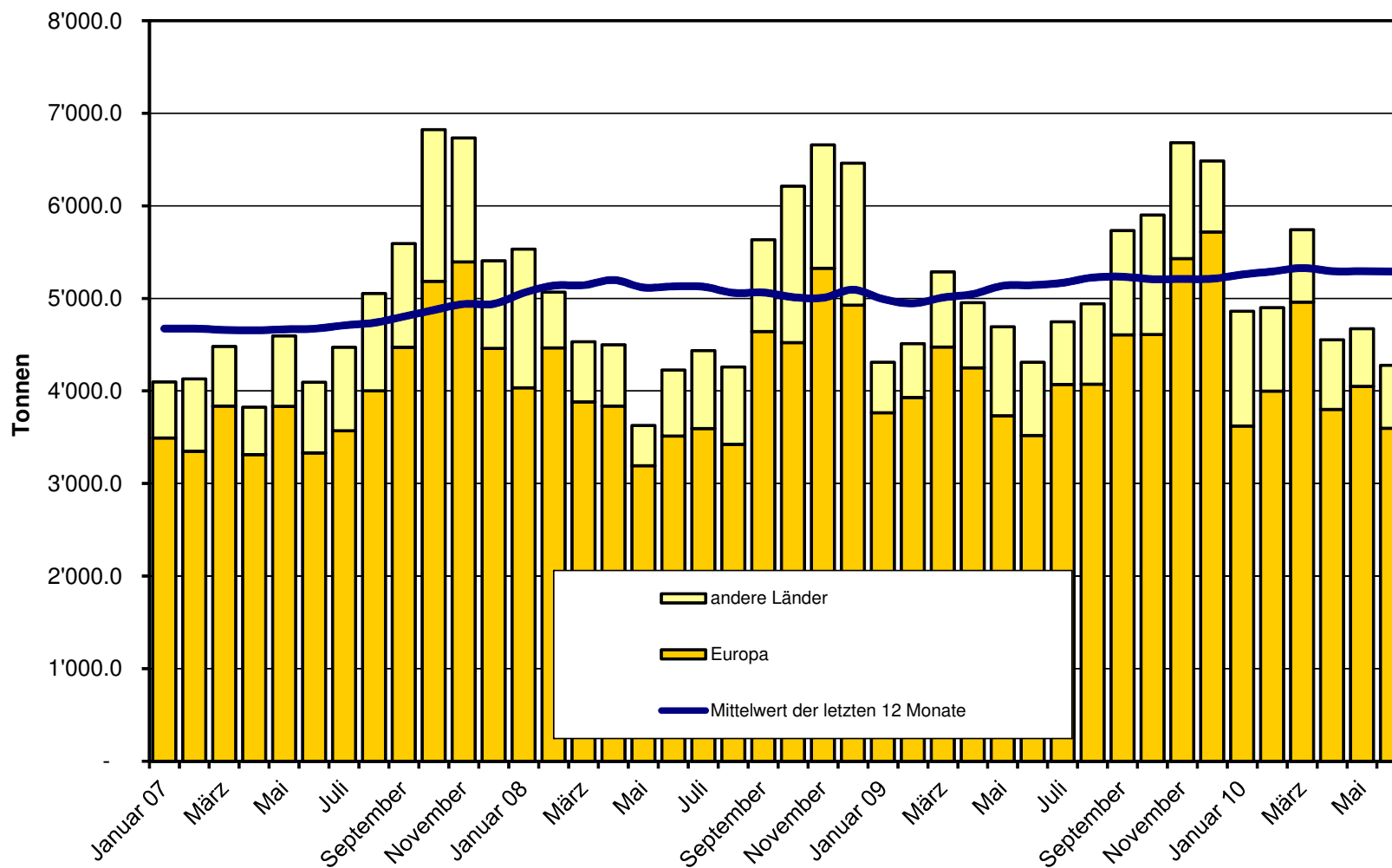
Januar bis Juni 2009

| Land | Käseexport nach Ländern (Januar bis Juni 2009) | | | | | | | | | | | | | | | | | | | | TOTAL |
|---|--|---------|-------|-------|-------|----------|---------|-------|-------|-------|-------|---------|---------|-------|-----|-------|---------|---------|-------|---------|-------|
| | t | t | t | t | t | t | t | t | t | t | t | t | t | t | t | t | t | t | t | t | |
| EUROPA | | | | | | | | | | | | | | | | | | | | | |
| Deutschland | 1'487.4 | 1'108.4 | * | * | 282.7 | 2'878.5 | 1'853.8 | 15.9 | 79.0 | 252.0 | 176.5 | 1'892.7 | 4'270.0 | 140.4 | 0.2 | 365.1 | 505.7 | 59.0 | 635.4 | 157.9 | |
| Frankreich | 951.3 | 904.5 | * | * | 114.6 | 1'970.3 | 261.3 | 71.1 | 30.8 | 126.1 | * | 38.1 | 527.4 | 0.5 | * | 101.4 | 101.9 | 5.3 | 39.7 | 258.9 | |
| Italien | 5'126.2 | 100.6 | * | * | 353.7 | 5'580.5 | 5.9 | * | * | 12.5 | * | 66.2 | 84.6 | 0.3 | 0.0 | 0.2 | 0.4 | 1'451.5 | 15.2 | 17.6 | |
| BeNeLux | 455.6 | 369.9 | * | * | 4.6 | 830.1 | 34.3 | 6.1 | 50.9 | 37.8 | 0.8 | 12.4 | 142.4 | 0.0 | * | 5.7 | 5.7 | 118.4 | 41.8 | 376.9 | |
| Grossbritannien | 130.1 | 330.9 | * | * | 13.9 | 474.9 | 10.7 | * | * | 0.9 | * | 0.8 | 12.4 | 0.0 | * | 0.5 | 0.6 | 11.8 | 16.3 | 35.9 | |
| Spanien/Portugal | 58.4 | 138.7 | * | * | 0.0 | 197.2 | * | * | * | * | * | 0.2 | 0.2 | 0.0 | * | 0.0 | 0.0 | 16.7 | 0.0 | 0.0 | |
| Europa nicht zugeordnet / übriges Europa | 352.7 | 371.2 | 132.7 | 316.4 | 60.8 | 1'233.8 | 192.5 | 14.8 | 21.3 | 49.9 | 26.7 | 796.7 | 1'101.8 | 2.5 | 7.4 | 68.6 | 78.5 | 1.7 | 20.6 | 391.0 | |
| TOTAL EUROPA | 8'561.7 | 3'324.2 | 132.7 | 316.4 | 830.4 | 13'165.3 | 2'358.6 | 108.0 | 181.9 | 479.3 | 204.0 | 2'807.1 | 6'138.9 | 143.7 | 7.6 | 541.5 | 692.8 | 1'664.3 | 769.1 | 1'238.2 | |
| Andere Länder | | | | | | | | | | | | | | | | | | | | | |
| Kanada | 196.5 | * | * | * | 3.8 | 200.3 | 9.6 | * | * | 4.0 | * | 9.1 | 22.7 | 0.0 | * | 0.0 | 0.0 | 78.1 | 0.1 | 178.5 | |
| USA | 265.3 | 783.9 | * | * | 3.0 | 1'052.2 | 11.8 | 3.3 | 17.3 | 3.9 | * | 15.3 | 51.5 | 0.0 | * | 2.1 | 2.1 | 49.6 | 0.8 | 77.2 | |
| Kanada / USA nicht zugeordnet/ andere Länder | 199.7 | 667.4 | 7.9 | 675.2 | 14.4 | 1'564.7 | 8.4 | 4.4 | 35.5 | 2.3 | 9.2 | 33.8 | 93.6 | 754.6 | 0.1 | 6.7 | 761.4 | 63.8 | 32.9 | 169.1 | |
| TOTAL ANDERE LÄNDER | 661.5 | 1'451.3 | 7.9 | 675.2 | 21.2 | 2'817.1 | 29.7 | 7.6 | 52.8 | 10.2 | 9.2 | 58.2 | 167.8 | 754.6 | 0.1 | 8.8 | 763.5 | 191.4 | 33.9 | 424.7 | |
| TOTAL | 9'223.1 | 4'775.5 | 140.6 | 991.7 | 851.5 | 15'982.5 | 2'388.3 | 115.6 | 234.8 | 489.5 | 213.1 | 2'865.3 | 6'306.7 | 898.3 | 7.8 | 550.2 | 1'456.3 | 1'855.8 | 803.0 | 1'663.0 | |

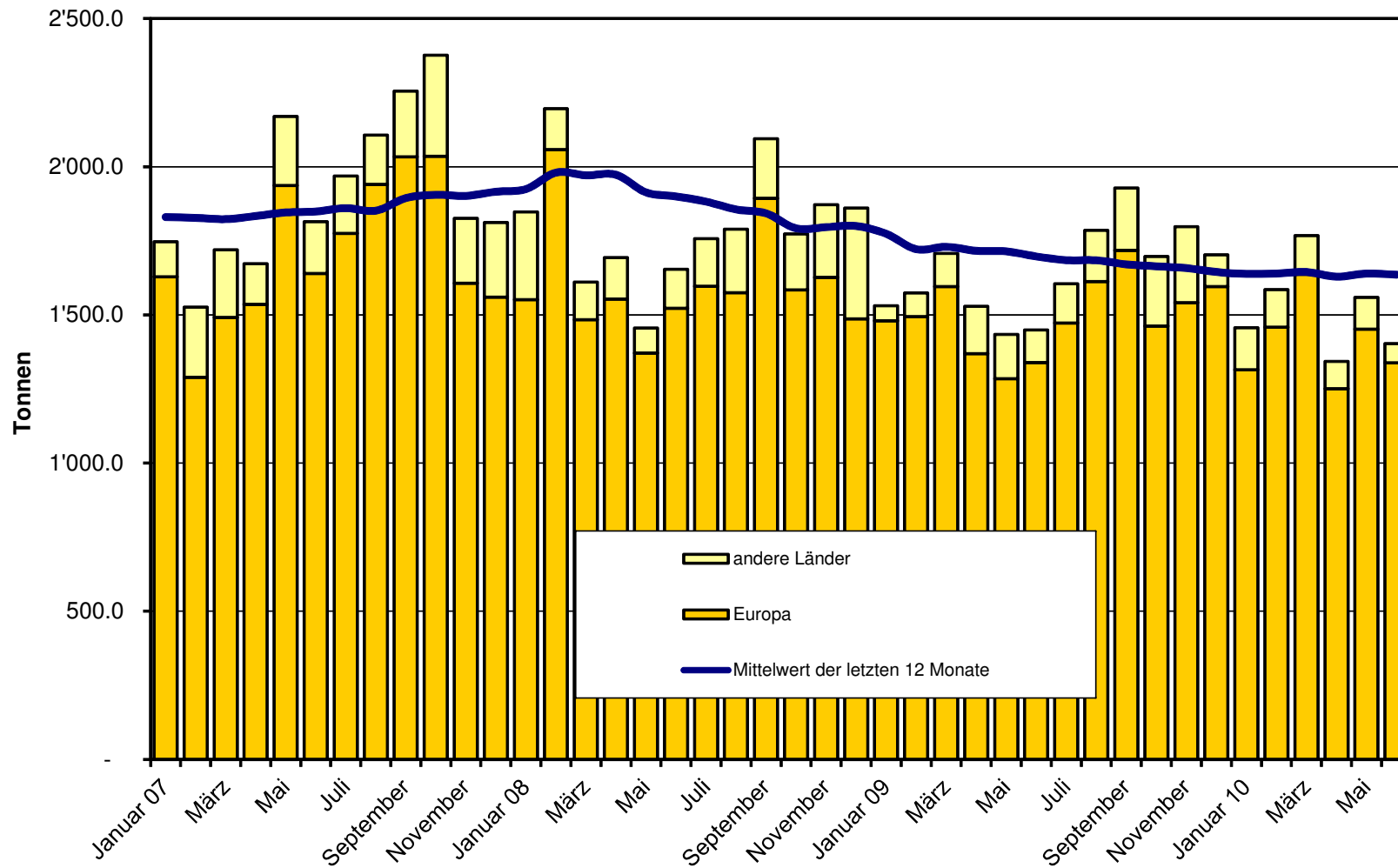
* Aus Datenschutzgründen sind Käseexporte mit weniger als drei Exporteuren nicht nach Ländern zugeordnet (Zusammenzug in 'Europa nicht zugeordnet' bzw. Kanada USA nicht zugeordnet/andere Länder)

Quelle: OZD

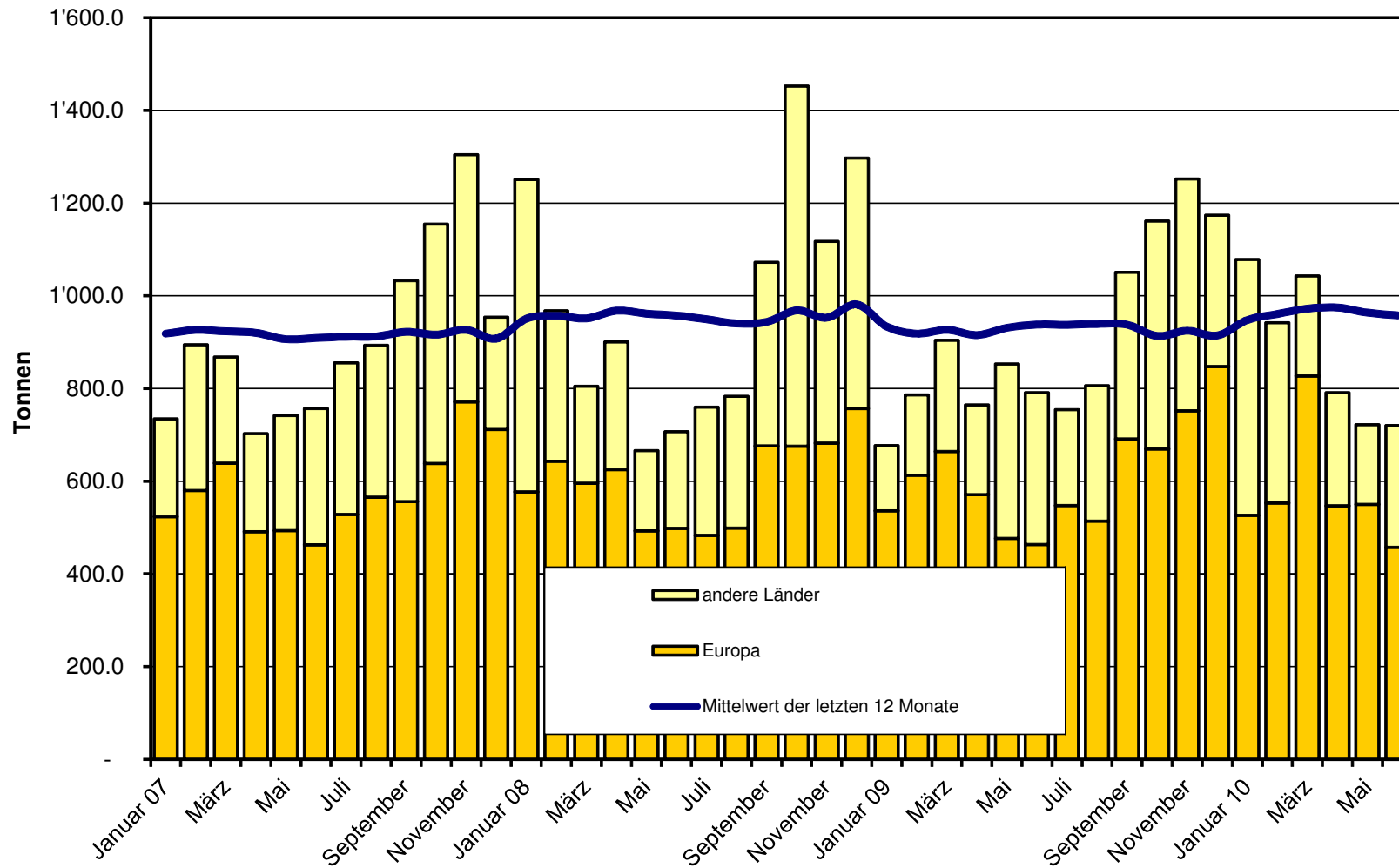
Total Käseexport (inkl. Fertigfondue und Schmelzkäse) ab 2007
Mittelwert der letzten 12 Monate



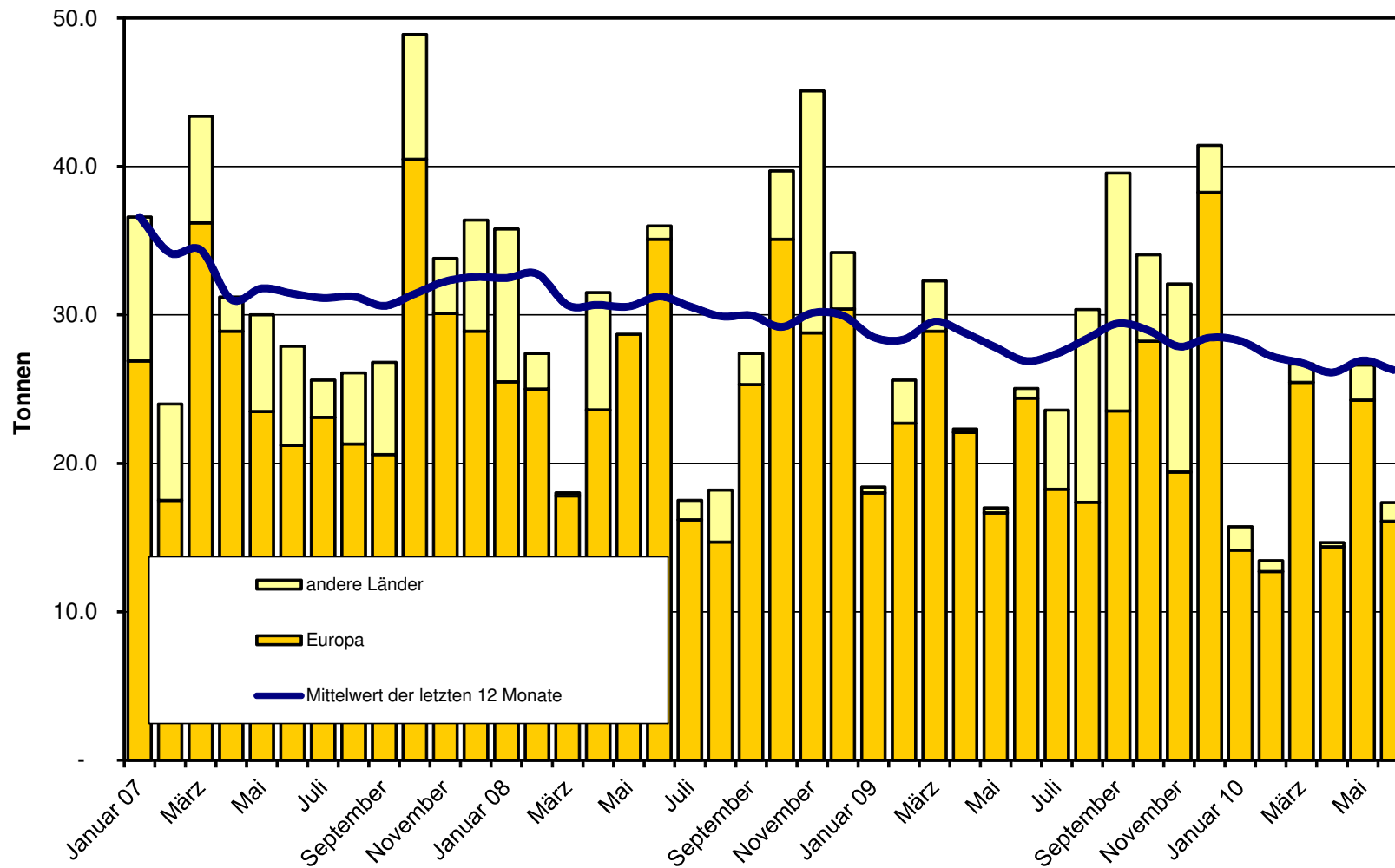
Emmentaler Export ab 2007 Mittelwert der letzten 12 Monate



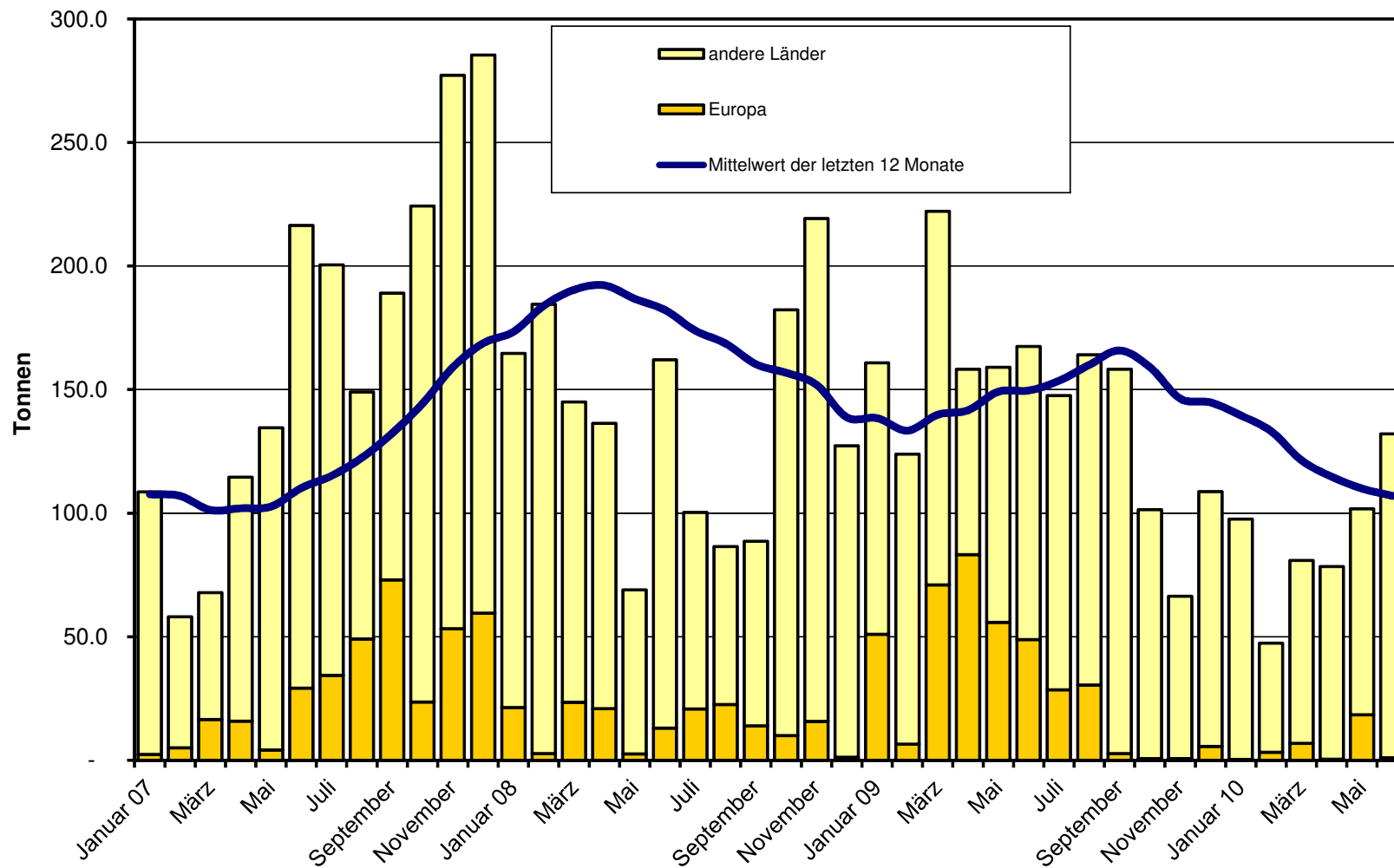
Gruyère Export ab 2007 Mittelwert der letzten 12 Monate



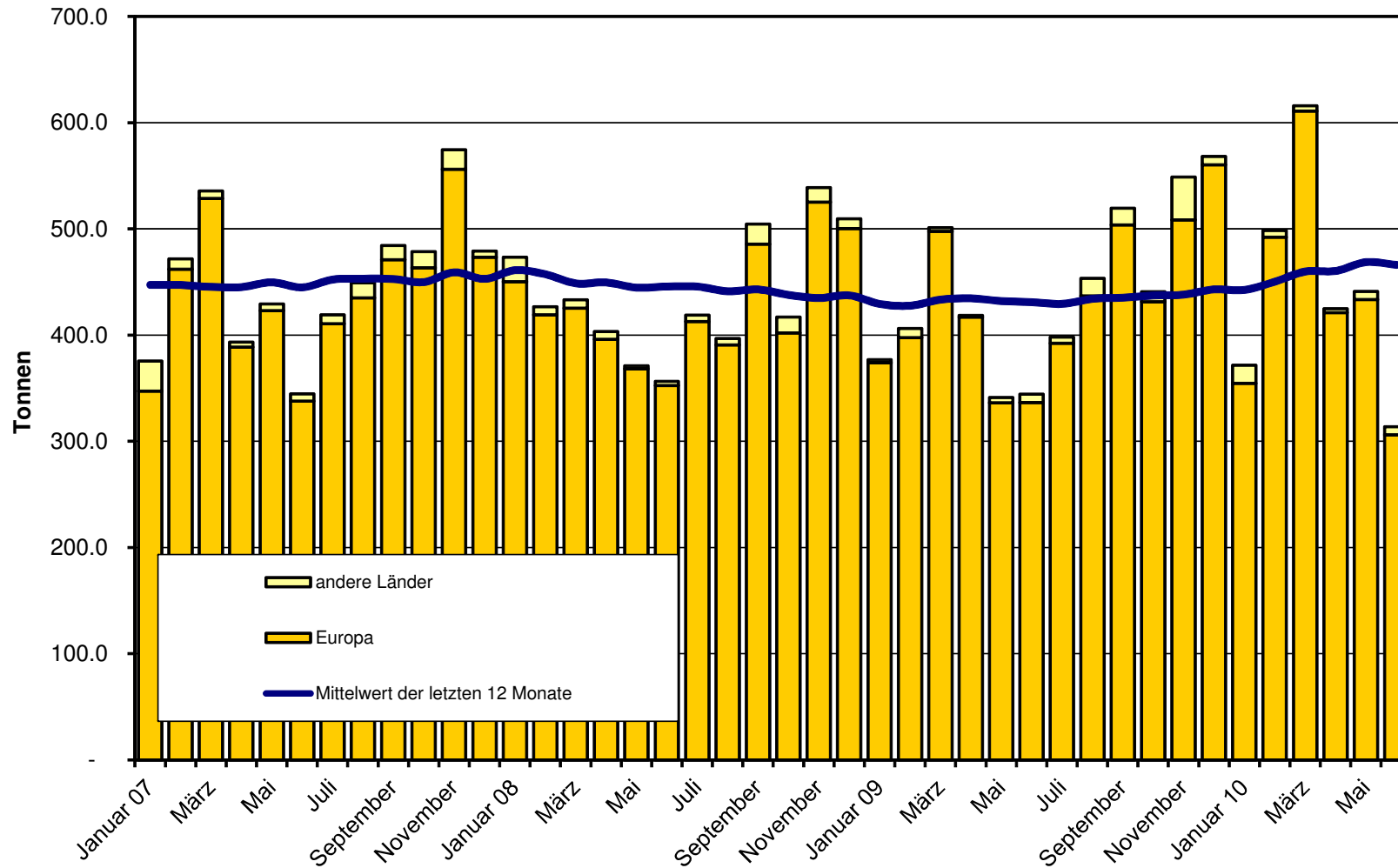
Sbrinz Export ab 2007
Mittelwert der letzten 12 Monate



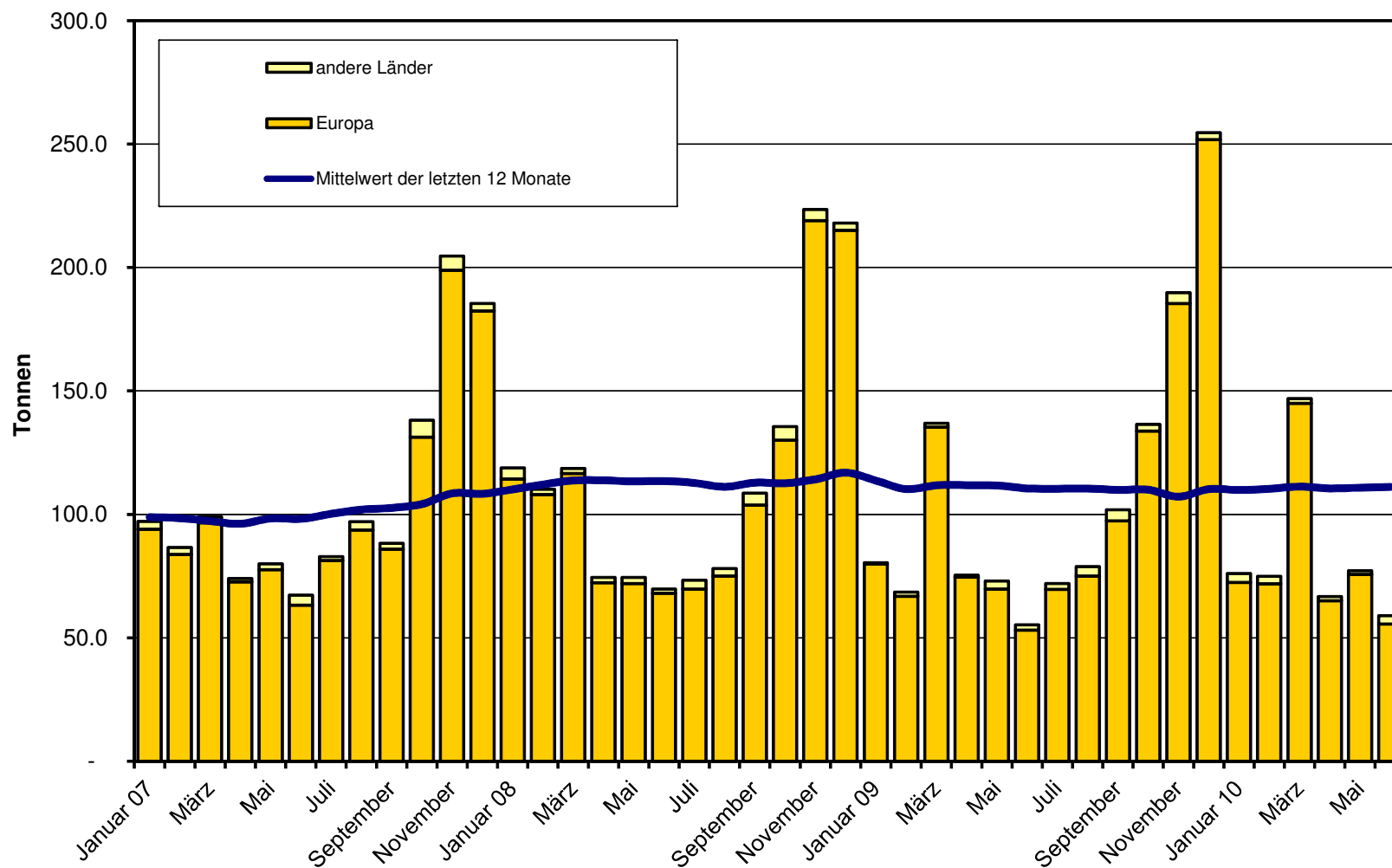
Switzerland Swiss Export ab 2007 Mittelwert der letzten 12 Monate



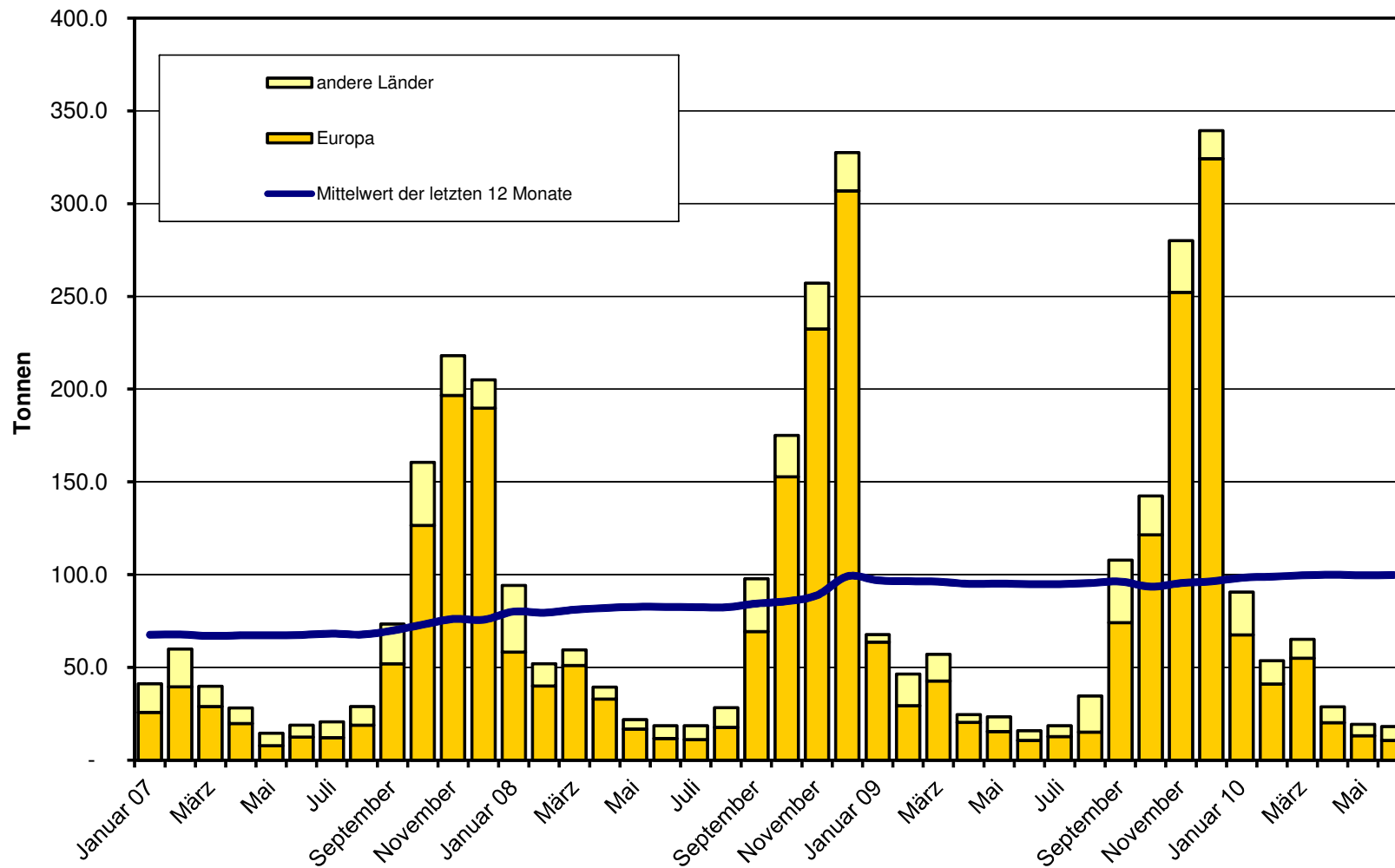
Appenzeller Käse Export ab 2007 Mittelwert der letzten 12 Monate



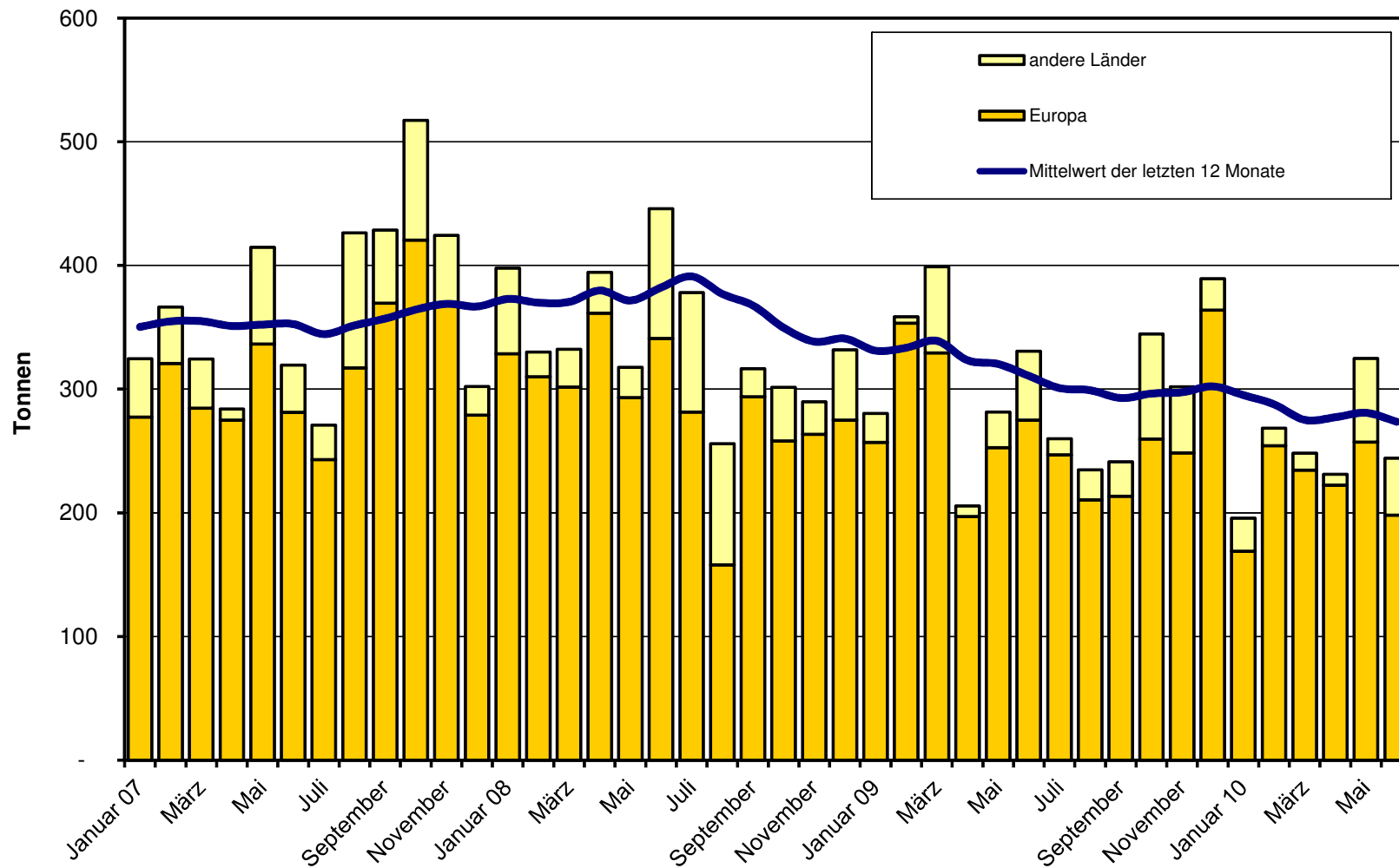
Tête de Moine Export ab 2007 Mittelwert der letzten 12 Monate



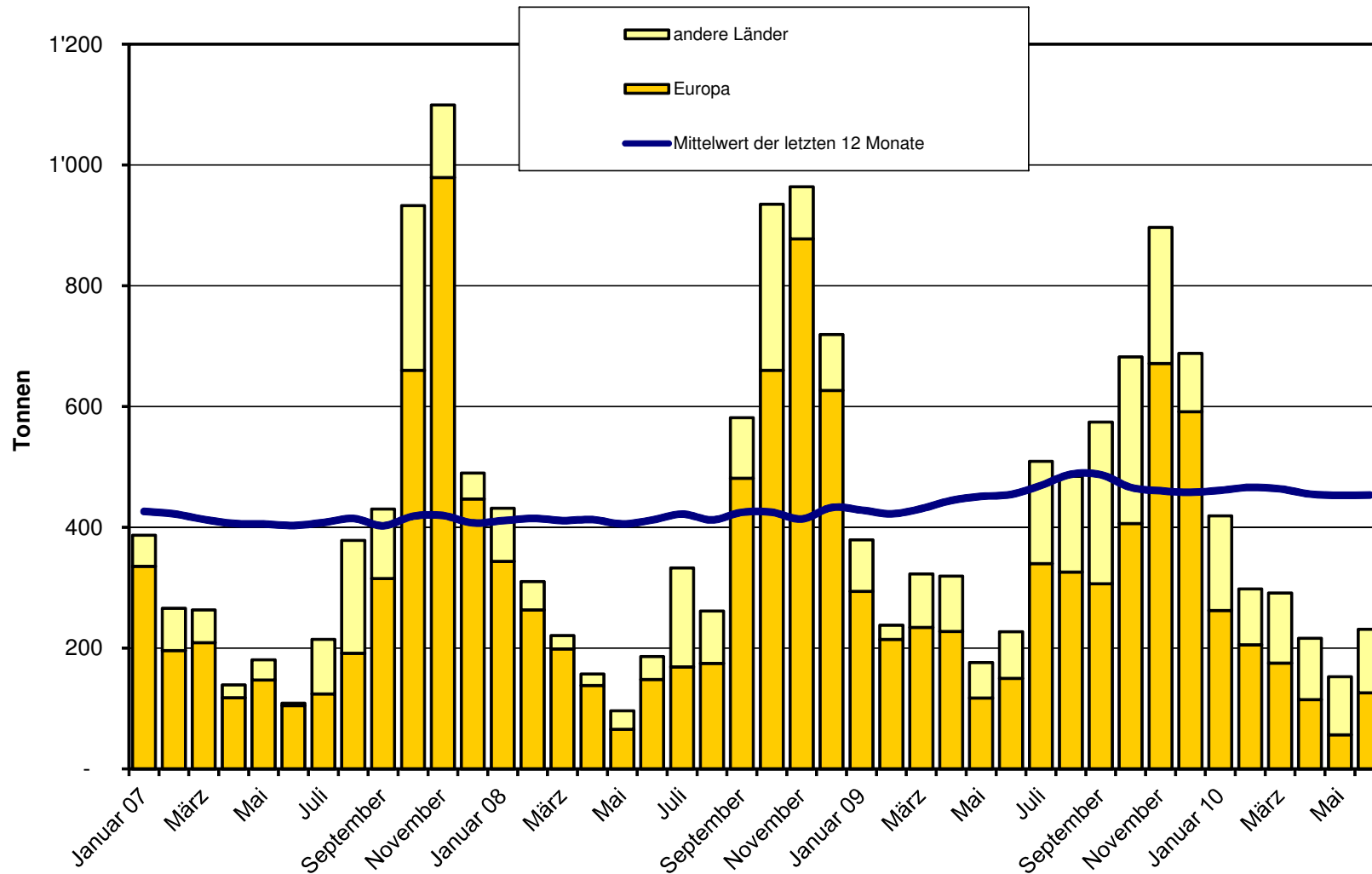
Raclette Suisse Export ab 2007
Mittelwert der letzten 12 Monate



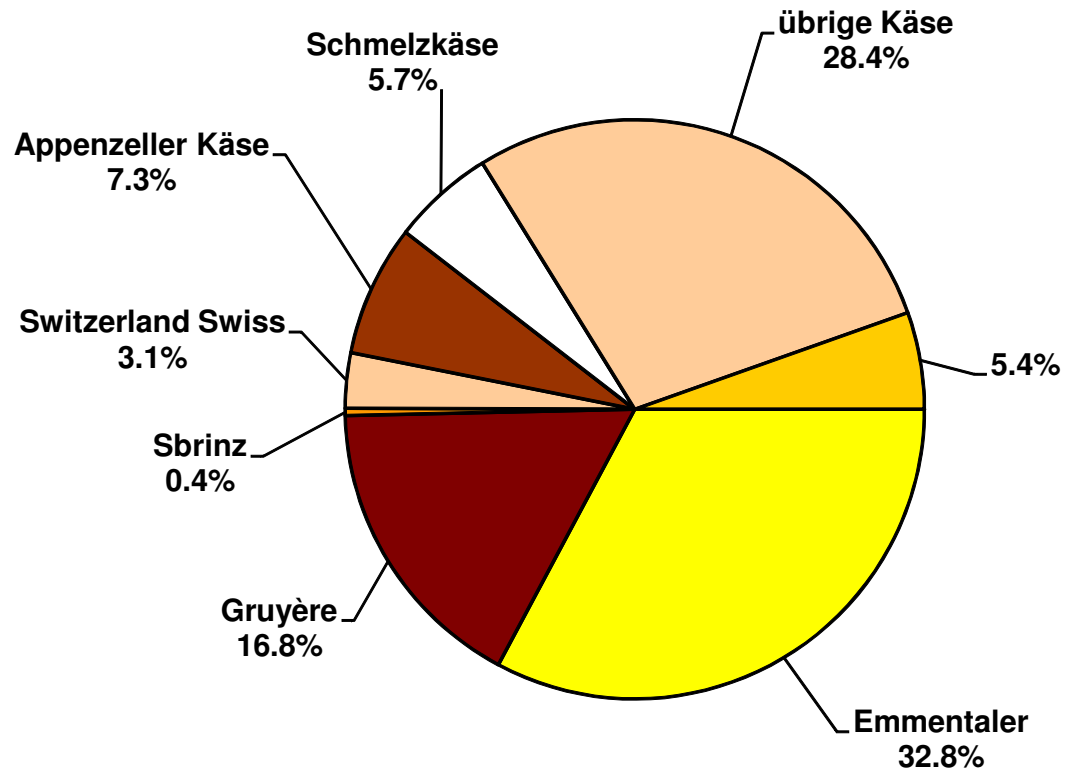
Schmelzkäse Export ab 2007 Mittelwert der letzten 12 Monate



Fertigfondue Export ab 2007 Mittelwert der letzten 12 Monate



Anteil Käseexporte je Sorte, Juni 2010 Total 4'277 Tonnen



Käseimport nach Produkten/Gruppen

| Käsesorte / Kategorie | Monatliche Importe | | Differenz zum Vorjahres-Monat | | Kumulierte Importe | | Differenz zur Vorjahresperiode | |
|---|---------------------|---------------------|-------------------------------|--------------|----------------------------|----------------------------|--------------------------------|-------------|
| | Jun. 2009 Tonnen | Jun. 2010 Tonnen | Tonnen | (%) | Jan. - Jun. 2009 Tonnen | Jan. - Jun. 2010 Tonnen | Tonnen | (%) |
| Mascarpone, Ricotta Romana | 93.4 | 101.1 | 7.7 | 8.2 | 559.7 | 548.6 | -11.1 | -2.0 |
| Mozzarella | 347.4 | 487.1 | 139.7 | 40.2 | 1'398.2 | 1'665.9 | 267.8 | 19.2 |
| Friskkäse, andere | 1'056.3 | 1'312.5 | 256.1 | 24.2 | 5'603.4 | 6'463.7 | 860.2 | 15.4 |
| Friskkäse total | 1'497.1 | 1'900.6 | 403.5 | 27.0 | 7'561.3 | 8'678.2 | 1'116.9 | 14.8 |
| Danablu, Gorgonzola, Roquefort | 16.4 | 32.8 | 16.4 | 99.7 | 96.3 | 234.7 | 138.4 | 143.7 |
| Weisschimmelkäse | 139.8 | 123.4 | -16.4 | -11.7 | 947.7 | 809.5 | -138.2 | -14.6 |
| Blau-, Grünschimmelkäse | | | | | | | | |
| Brie, Camembert, Italice | 157.1 | 130.5 | -26.6 | -16.9 | 954.6 | 830.8 | -123.7 | -13.0 |
| Weichkäse, andere | 634.6 | 599.6 | -35.0 | -5.5 | 3'167.8 | 3'261.8 | 93.9 | 3.0 |
| Weichkäse total | 947.9 | 886.2 | -61.7 | -6.5 | 5'166.4 | 5'136.8 | -29.7 | -0.6 |
| Halbhartkäse mit Schimmelbildung | 2.9 | 1.9 | -1.0 | -34.7 | 15.7 | 13.1 | -2.5 | -16.2 |
| Caciocavallo, Fontina, Brà, u.a. | 82.9 | 52.2 | -30.6 | -37.0 | 409.3 | 310.5 | -98.8 | -24.1 |
| Tilsiter | 3.4 | 1.2 | -2.1 | -63.1 | 65.7 | 20.0 | -45.7 | -69.5 |
| Halbhartkäse, andere | 524.7 | 487.5 | -37.2 | -7.1 | 2'929.5 | 3'134.7 | 205.2 | 7.0 |
| Halbhartkäse, gerieben, pulverisiert | 3.6 | 6.7 | 3.0 | 83.6 | 27.2 | 88.0 | 60.8 | 223.7 |
| Halbhartkäse total | 617.5 | 549.5 | -67.9 | -11.0 | 3'447.3 | 3'566.4 | 119.0 | 3.5 |
| Kräuterkäse (Schabziger) | 0.0 | 0.0 | 0.0 | | 33.8 | 2.5 | -31.4 | -92.7 |
| Hartkäse mit Schimmelbildung | 0.2 | 0.0 | -0.2 | -100.0 | 0.2 | 1.0 | 0.9 | 541.3 |
| Caciocavallo, Fontina, Brà, u.a. | 13.9 | 8.5 | -5.4 | -38.9 | 90.9 | 73.9 | -16.9 | -18.6 |
| Emmentaler | 39.4 | 33.5 | -6.0 | -15.1 | 205.8 | 197.6 | -8.2 | -4.0 |
| Hartkäse, andere | 129.2 | 203.3 | 74.1 | 57.3 | 1'031.6 | 955.5 | -76.1 | -7.4 |
| Hartkäse, gerieben, pulverisiert | 30.8 | 29.7 | -1.1 | -3.5 | 200.0 | 212.2 | 12.2 | 6.1 |
| Hartkäse total | 213.6 | 275.1 | 61.5 | 28.8 | 1'562.3 | 1'442.7 | -119.6 | -7.7 |
| Grana/Parmiggiano | 451.1 | 505.2 | 54.1 | 12.0 | 2'534.1 | 2'809.7 | 275.5 | 10.9 |
| Extra Hartkäse total | 451.1 | 505.2 | 54.1 | 12.0 | 2'534.1 | 2'809.7 | 275.5 | 10.9 |
| Total aller Sorten exkl. Schmelzkäse | 3'727.1 | 4'116.6 | 389.5 | 10.5 | 20'271.5 | 21'633.6 | 1'362.2 | 6.7 |
| Schmelzkäse total | 208.6 | 293.2 | 84.5 | 40.5 | 1'306.7 | 1'646.3 | 339.6 | 26.0 |

Quelle: OZD

Käseimport nach Ländern

Juni 2010

| | <div style="display: flex; justify-content: space-around; text-align: center;"> <div style="writing-mode: vertical-rl; transform: rotate(180deg);">Mascarpone, Ricotta Romana</div> <div style="writing-mode: vertical-rl; transform: rotate(180deg);">Mozzarella</div> <div style="writing-mode: vertical-rl; transform: rotate(180deg);">Andere Frischkäse</div> <div style="writing-mode: vertical-rl; transform: rotate(180deg);">TOTAL Frischkäse</div> <div style="writing-mode: vertical-rl; transform: rotate(180deg);">Danablu, Gorgonzola, Roquefort</div> <div style="writing-mode: vertical-rl; transform: rotate(180deg);">Brie, Camembert, Reblochon</div> <div style="writing-mode: vertical-rl; transform: rotate(180deg);">Andere Weichkäse</div> <div style="writing-mode: vertical-rl; transform: rotate(180deg);">TOTAL Weichkäse</div> <div style="writing-mode: vertical-rl; transform: rotate(180deg);">Kräuterkäse</div> <div style="writing-mode: vertical-rl; transform: rotate(180deg);">Hart- und Halbhärtkäse</div> <div style="writing-mode: vertical-rl; transform: rotate(180deg);">Übrige Käse</div> </div> | | | | | | | | | | | TOTAL | |
|----------------------------|--|--------|--------|--------|--------|--------|--------|--------|--------|--------|--------|--------|--------|
| Land | Tonnen | Tonnen | Tonnen | Tonnen | Tonnen | Tonnen | Tonnen | Tonnen | Tonnen | Tonnen | Tonnen | Tonnen | |
| EUROPA | | | | | | | | | | | | | |
| Deutschland | | 29.3 | 474.1 | 503.4 | 2.2 | | 155.6 | 157.8 | | 195.8 | | 109.7 | 966.7 |
| Frankreich | | 15.9 | 369.1 | 385.0 | 7.7 | 114.7 | 330.7 | 453.0 | | 184.1 | | 98.3 | 1120.4 |
| Italien | 98.5 | 438.4 | 322.4 | 859.3 | 22.8 | | 112.5 | 135.3 | | 779.3 | | 30.2 | 1804.0 |
| Niederlande | | | 0.3 | 0.3 | | | 12.1 | 12.1 | | 66.0 | | | 78.5 |
| Belgien | | | 42.9 | 42.9 | | | 6.0 | 6.0 | | 2.1 | | | 51.0 |
| Luxemburg | | | | 0.0 | | | | 0.0 | | | | | 0.0 |
| Oesterreich | 2.6 | 3.5 | 29.3 | 35.4 | | | 6.2 | 6.2 | | 47.2 | | 54.4 | 143.3 |
| Grossbritannien | | | | 0.0 | | | 0.6 | 0.6 | | 11.2 | | | 11.8 |
| Dänemark | | | 71.1 | 71.1 | 0.1 | | 23.5 | 23.6 | | 8.2 | | 0.0 | 102.9 |
| Norwegen | | | | 0.0 | | | | 0.0 | | | | | 0.0 |
| Schweden | | | | 0.0 | | | | 0.0 | | 0.9 | | 0.3 | 1.1 |
| Portugal | | | 0.0 | 0.0 | | | 0.8 | 0.8 | | 14.6 | | 0.2 | 15.7 |
| Spanien | | | | 0.0 | | | 1.4 | 1.4 | | 19.0 | | | 20.4 |
| Griechenland | | | 2.6 | 2.6 | | | 88.0 | 88.0 | | 0.9 | | | 91.6 |
| Europa übrige | | | | 0.6 | 0.6 | | | 0.0 | | 0.5 | | | 1.1 |
| TOTAL EUROPA | 101.1 | 487.1 | 1312.5 | 1900.6 | 32.8 | 114.7 | 737.5 | 884.9 | 0.0 | 1329.7 | | 293.2 | 4408.5 |
| Andere Länder | | | | | | | | | | | | | 0.0 |
| Kanada | | | | 0.0 | | | | 0.0 | | | | | 0.0 |
| USA | | | | 0.0 | | | | 0.0 | | | | | 0.0 |
| Nordamerika übrige | | | | 0.0 | | | | 0.0 | | | | | 0.0 |
| Lateinamerika | | | | 0.0 | | | | 0.0 | | | | | 0.0 |
| Afrika | | | | 0.0 | | | | 0.0 | | | | | 0.0 |
| Asien | | | | 0.0 | | | 1.3 | 1.3 | | | | | 1.3 |
| Australien | | | | 0.0 | | | | 0.0 | | | | | 0.0 |
| TOTAL ANDERE LÄNDER | 0.0 | 0.0 | 0.0 | 0.0 | 0.0 | 0.0 | 1.3 | 1.3 | 0.0 | 0.0 | | 0.0 | 1.3 |
| TOTAL | 101.1 | 487.1 | 1312.5 | 1900.6 | 32.8 | 114.7 | 738.8 | 886.2 | 0.0 | 1329.7 | | 293.2 | 4409.7 |

Quelle: OZD

Käseimport nach Ländern

Juni 2009

| Land | Mascarpone, Ricotta Romana | Mozzarella | Andere Frischkäse | TOTAL Frischkäse | Danablu, Gorgonzola, Roquefort | Brie, Camembert, Reblochon | Andere Weichkäse | TOTAL Weichkäse | Kräuterkäse | Hart- und Halbhartkäse | Übrige Käse | TOTAL |
|----------------------------|----------------------------|------------|-------------------|------------------|--------------------------------|----------------------------|------------------|-----------------|-------------|------------------------|-------------|--------|
| EUROPA | | | | | | | | | | | | |
| Deutschland | 0.0 | 13.5 | 348.4 | 361.9 | 0.6 | 183.2 | 183.8 | 192.7 | 72.1 | | | 810.5 |
| Frankreich | | 0.1 | 275.2 | 275.3 | 13.3 | 139.9 | 336.5 | 489.6 | 214.7 | 69.4 | | 1048.9 |
| Italien | 92.0 | 331.1 | 301.8 | 724.9 | 2.6 | | 146.9 | 149.4 | 672.4 | 28.4 | | 1575.1 |
| Niederlande | | | 1.46 | 1.5 | | | 4.5 | 4.5 | 49.8 | 0.0 | | 55.9 |
| Belgien | | | | 0.0 | | | | 0.0 | 20.0 | | | 20.0 |
| Luxemburg | | | | 0.0 | | | | 0.0 | | | | 0.0 |
| Oesterreich | 1.3 | 2.834 | 15.9 | 20.0 | | 8.3 | 8.3 | 68.4 | 38.0 | | | 134.7 |
| Grossbritannien | | | 17.3 | 17.3 | | 0.0 | 0.0 | 10.8 | 0.0 | | | 28.1 |
| Dänemark | | | 93.352 | 93.4 | | 26.6 | 26.6 | 13.4 | | | | 133.3 |
| Norwegen | | | | 0.0 | | | | 0.0 | | | | 0.0 |
| Schweden | | | | 0.0 | | | | 0.0 | 0.8 | 0.6 | | 1.4 |
| Portugal | | | | 0.0 | | 0.3 | 0.3 | 11.6 | | | | 11.9 |
| Spanien | | | | 0.0 | | 0.9 | 0.9 | 25.6 | | | | 26.5 |
| Griechenland | | | 2.277 | 2.3 | | 83.7 | 83.7 | 0.2 | | | | 86.3 |
| Europa übrige | | | 0.1 | 0.1 | 0.0 | 0.4 | 0.4 | 1.8 | 0.0 | | | 2.3 |
| TOTAL EUROPA | 93.4 | 347.4 | 1055.7 | 1496.5 | 16.4 | 139.9 | 791.3 | 947.6 | 0.0 | 1282.1 | 208.6 | 3934.8 |
| Andere Länder | | | | | | | | | | | | 0.0 |
| Kanada | | | | 0.0 | | | 0.0 | | | | | 0.0 |
| USA | | | | 0.0 | | | 0.0 | | | | | 0.0 |
| Nordamerika übrige | | | | 0.0 | | | 0.0 | | | | | 0.0 |
| Lateinamerika | | | | 0.0 | | | 0.0 | | 0.0 | | | 0.0 |
| Afrika | | | | 0.0 | | | 0.0 | | | | | 0.0 |
| Asien | | | | 0.0 | | | 0.0 | | | | | 0.0 |
| Australien | | | | 0.0 | | | 0.0 | | | | | 0.0 |
| TOTAL ANDERE LÄNDER | 0.0 | 0.0 | 0.0 | 0.0 | 0.0 | 0.0 | 0.0 | 0.0 | 0.0 | 0.0 | 0.0 | 0.0 |
| TOTAL | 93.4 | 347.4 | 1055.7 | 1496.5 | 16.4 | 139.9 | 791.3 | 947.6 | 0.0 | 1282.1 | 208.6 | 3934.8 |

Quelle: OZD

Käseimport nach Ländern, kumuliert

Januar bis Juni 2010

| | Mascarpone, Ricotta Romana | Mozzarella | Andere Frischkäse | TOTAL Frischkäse | Danablu, Gorgonzola, Roquefort | Brie, Camembert, Reblochon | Andere Weichkäse | TOTAL Weichkäse | Kräuterkäse | Hart- und Halbhartkäse | Übrige Käse | TOTAL |
|----------------------------|----------------------------|------------|-------------------|------------------|--------------------------------|----------------------------|------------------|-----------------|-------------|------------------------|-------------|----------|
| Land | Tonnen | Tonnen | Tonnen | Tonnen | Tonnen | Tonnen | Tonnen | Tonnen | Tonnen | Tonnen | Tonnen | |
| EUROPA | | | | | | | | | | | | |
| Deutschland | 0.0 | 139.0 | 2'210.8 | 2'349.9 | 21.5 | 0.0 | 947.5 | 969.1 | 0.0 | 1'254.9 | 645.8 | 5'219.5 |
| Frankreich | 0.2 | 81.0 | 1'739.0 | 1'820.2 | 62.6 | 741.9 | 1'922.2 | 2'726.7 | 0.0 | 1'264.9 | 570.7 | 6'382.5 |
| Italien | 530.5 | 1'416.7 | 1'663.7 | 3'610.7 | 144.8 | 0.0 | 727.5 | 872.3 | 0.1 | 4'186.9 | 163.2 | 8'833.4 |
| Niederlande | 0.0 | 0.0 | 6.2 | 6.2 | 0.0 | 0.0 | 19.5 | 19.5 | 0.0 | 394.6 | 0.0 | 420.4 |
| Belgien | 0.0 | 0.0 | 216.4 | 216.4 | 0.0 | 0.0 | 18.1 | 18.1 | 0.0 | 40.8 | 0.0 | 275.3 |
| Luxemburg | 0.0 | 0.0 | 0.0 | 0.0 | 0.0 | 0.0 | 0.0 | 0.0 | 0.0 | 0.0 | 0.0 | 0.0 |
| Oesterreich | 8.3 | 10.9 | 135.0 | 154.3 | 0.0 | 0.0 | 47.5 | 47.5 | 0.0 | 365.7 | 259.3 | 826.7 |
| Grossbritannien | 0.0 | 0.0 | 0.0 | 0.0 | 0.0 | 0.0 | 4.4 | 4.4 | 2.4 | 60.3 | 0.0 | 67.1 |
| Dänemark | 0.0 | 0.0 | 446.6 | 446.6 | 2.1 | 0.0 | 140.4 | 142.4 | 0.0 | 66.3 | 0.0 | 655.4 |
| Norwegen | 0.0 | 0.0 | 0.0 | 0.0 | 0.0 | 0.0 | 0.0 | 0.0 | 0.0 | 0.0 | 0.0 | 0.0 |
| Schweden | 0.0 | 0.0 | 0.0 | 0.0 | 0.0 | 0.0 | 0.6 | 0.6 | 0.0 | 6.0 | 1.2 | 7.9 |
| Portugal | 0.0 | 0.0 | 0.0 | 0.0 | 0.0 | 0.0 | 2.8 | 2.8 | 0.0 | 75.6 | 0.2 | 78.6 |
| Spanien | 0.0 | 0.0 | 0.0 | 0.0 | 0.0 | 0.0 | 6.5 | 6.5 | 0.0 | 88.9 | 0.0 | 95.4 |
| Griechenland | 0.0 | 0.0 | 7.6 | 7.6 | 0.0 | 0.0 | 292.2 | 292.2 | 0.0 | 2.1 | 0.0 | 302.0 |
| Europa übrige | 0.0 | 1.2 | 0.6 | 1.8 | 0.0 | 0.0 | 12.0 | 12.0 | 0.0 | 6.8 | 0.0 | 20.4 |
| TOTAL EUROPA | 539.1 | 1'648.7 | 6'425.9 | 8'613.7 | 230.9 | 741.9 | 4'141.3 | 5'114.3 | 2.5 | 7'813.8 | 1'640.2 | 23'184.5 |
| Andere Länder | 0.0 | 0.0 | 0.0 | 0.0 | 0.0 | 0.0 | 0.0 | 0.0 | 0.0 | 0.0 | 0.0 | 0.0 |
| Kanada | 0.0 | 0.0 | 0.0 | 0.0 | 0.0 | 0.0 | 0.0 | 0.0 | 0.0 | 0.0 | 0.0 | 0.0 |
| USA | 0.0 | 0.0 | 0.0 | 0.0 | 0.0 | 0.0 | 0.0 | 0.0 | 0.0 | 0.0 | 0.0 | 0.0 |
| Nordamerika übrige | 0.0 | 0.0 | 0.0 | 0.0 | 0.0 | 0.0 | 0.0 | 0.0 | 0.0 | 0.0 | 0.0 | 0.0 |
| Lateinamerika | 0.0 | 0.0 | 0.0 | 0.0 | 0.0 | 0.0 | 0.0 | 0.0 | 0.0 | 0.0 | 0.0 | 0.0 |
| Afrika | 0.0 | 0.0 | 0.0 | 0.0 | 0.0 | 0.0 | 0.0 | 0.0 | 0.0 | 0.0 | 0.0 | 0.0 |
| Asien | 0.0 | 0.0 | 0.0 | 0.0 | 0.0 | 0.0 | 1.4 | 1.4 | 0.0 | 0.0 | 0.0 | 1.4 |
| Australien | 0.0 | 0.0 | 0.0 | 0.0 | 0.0 | 0.0 | 0.0 | 0.0 | 0.0 | 0.0 | 0.0 | 0.0 |
| TOTAL ANDERE LÄNDER | 0.0 | 0.0 | 0.0 | 0.0 | 0.0 | 0.0 | 1.4 | 1.4 | 0.0 | 0.0 | 0.0 | 1.4 |
| TOTAL | 539.1 | 1'648.7 | 6'425.9 | 8'613.7 | 230.9 | 741.9 | 4'142.7 | 5'115.7 | 2.5 | 7'813.8 | 1'640.2 | 23'185.9 |

Quelle: OZD

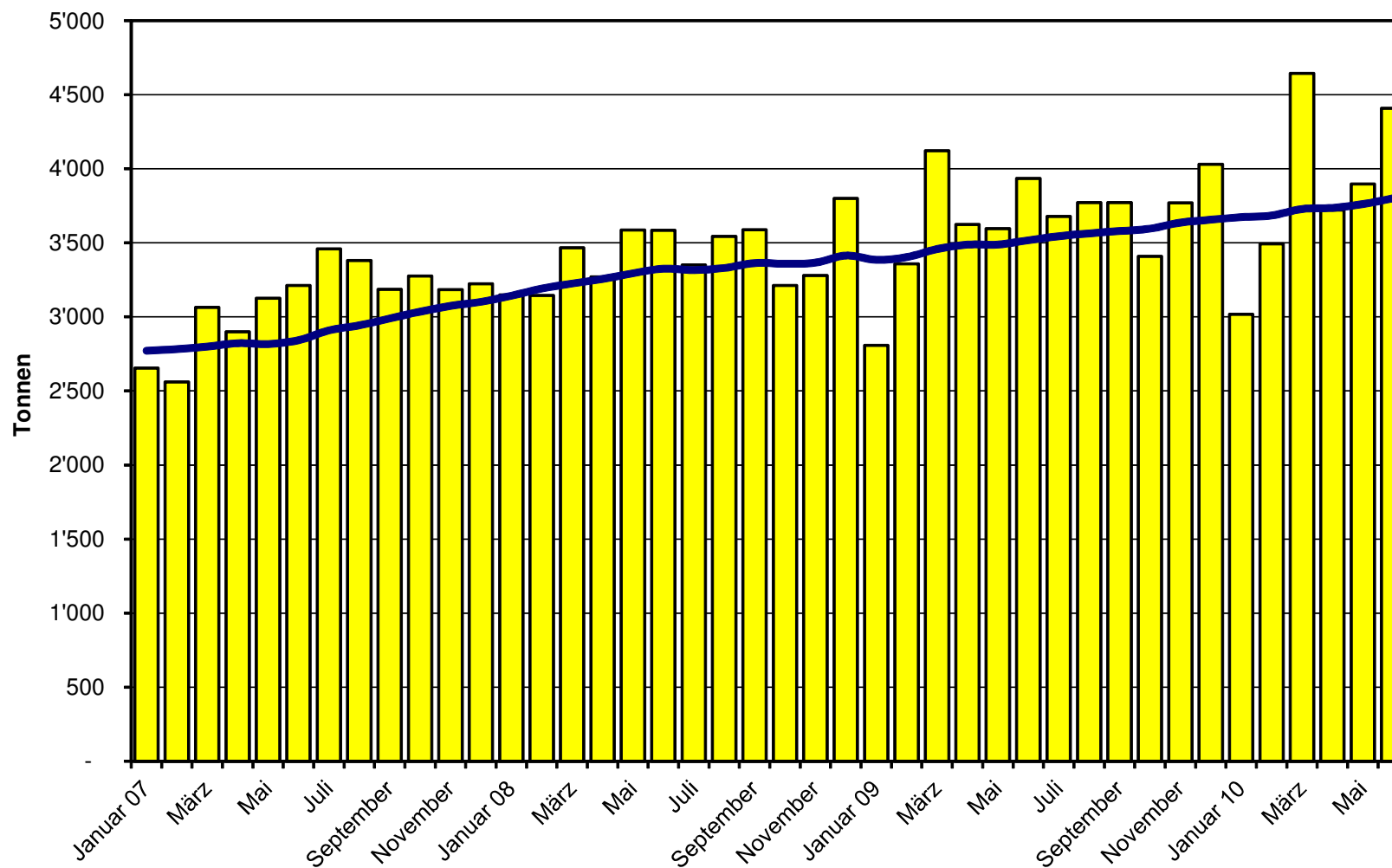
Käseimport nach Ländern, kumuliert

Januar bis Juni 2009

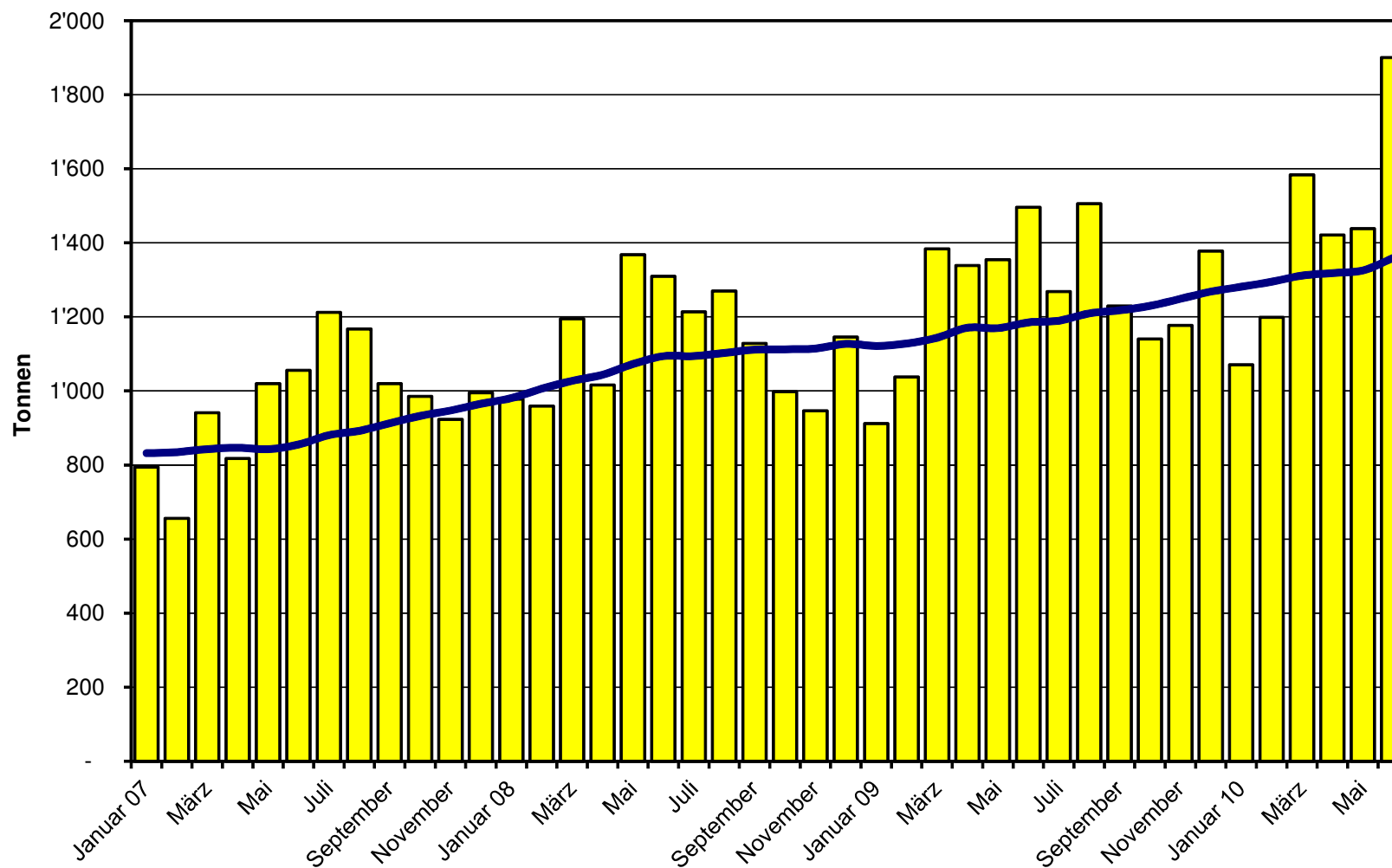
| Land | Käseimport nach Ländern, kumuliert | | | | | | | | | | | | TOTAL |
|----------------------------|------------------------------------|------------|-------------------|------------------|--------------------------------|----------------------------|------------------|-----------------|-------------|------------------------|-------------|----------|-------|
| | Tonnen | Tonnen | Tonnen | Tonnen | Tonnen | Tonnen | Tonnen | Tonnen | Tonnen | Tonnen | Tonnen | Tonnen | |
| | Mascarpone, Ricotta Romana | Mozzarella | Andere Frischkäse | TOTAL Frischkäse | Danablu, Gorgonzola, Roquefort | Brie, Camembert, Reblochon | Andere Weichkäse | TOTAL Weichkäse | Kräuterkäse | Hart- und Halbhartkäse | Übrige Käse | | |
| EUROPA | | | | | | | | | | | | | |
| Deutschland | 0.0 | 39.9 | 1'824.7 | 1'864.6 | 3.8 | 0.0 | 906.2 | 910.0 | 0.0 | 1'001.3 | 352.8 | 4'128.7 | |
| Frankreich | 0.0 | 0.2 | 1'455.3 | 1'455.5 | 75.7 | 868.4 | 1'814.9 | 2'759.0 | 0.0 | 1'190.0 | 525.4 | 5'929.9 | |
| Italien | 553.4 | 1'341.6 | 1'516.0 | 3'411.0 | 15.4 | 0.0 | 950.3 | 965.8 | 33.8 | 4'064.4 | 184.2 | 8'659.1 | |
| Niederlande | 0.0 | 0.0 | 9.1 | 9.1 | 0.0 | 0.0 | 25.8 | 25.8 | 0.0 | 317.7 | 0.0 | 352.6 | |
| Belgien | 0.0 | 0.0 | 0.0 | 0.0 | 0.0 | 0.0 | 10.8 | 10.8 | 0.0 | 71.6 | 0.0 | 82.5 | |
| Luxemburg | 0.0 | 0.0 | 0.0 | 0.0 | 0.0 | 0.0 | 0.0 | 0.0 | 0.0 | 0.0 | 0.0 | 0.0 | |
| Oesterreich | 6.3 | 8.3 | 90.2 | 104.8 | 0.0 | 0.0 | 37.4 | 37.4 | 0.0 | 300.8 | 227.1 | 670.1 | |
| Grossbritannien | 0.0 | 0.0 | 154.0 | 154.0 | 0.0 | 0.0 | 3.8 | 3.8 | 0.0 | 68.9 | 0.0 | 226.7 | |
| Dänemark | 0.0 | 0.2 | 518.7 | 518.9 | 1.3 | 0.0 | 119.3 | 120.6 | 0.0 | 82.4 | 0.0 | 721.9 | |
| Norwegen | 0.0 | 0.0 | 0.0 | 0.0 | 0.0 | 0.0 | 0.0 | 0.0 | 0.0 | 0.0 | 0.0 | 0.0 | |
| Schweden | 0.0 | 0.0 | 0.0 | 0.0 | 0.0 | 0.0 | 0.3 | 0.3 | 0.0 | 6.2 | 1.5 | 8.1 | |
| Portugal | 0.0 | 0.0 | 0.0 | 0.0 | 0.0 | 0.0 | 8.4 | 8.4 | 0.0 | 65.0 | 0.0 | 73.4 | |
| Spanien | 0.0 | 0.0 | 0.5 | 0.5 | 0.0 | 0.0 | 5.9 | 5.9 | 0.0 | 123.5 | 0.0 | 129.9 | |
| Griechenland | 0.0 | 0.0 | 3.7 | 3.7 | 0.0 | 0.0 | 301.4 | 301.4 | 0.0 | 1.5 | 0.1 | 306.7 | |
| Europa übrige | 0.0 | 0.7 | 0.1 | 0.8 | 0.0 | 0.0 | 2.7 | 2.7 | 0.0 | 168.4 | 0.0 | 171.9 | |
| TOTAL EUROPA | 559.7 | 1'390.9 | 5'572.2 | 7'522.8 | 96.3 | 868.4 | 4'187.2 | 5'151.9 | 33.8 | 7'461.9 | 1'291.2 | 21'461.6 | |
| Andere Länder | 0.0 | 0.0 | 0.0 | 0.0 | 0.0 | 0.0 | 0.0 | 0.0 | 0.0 | 0.0 | 0.0 | 0.0 | |
| Kanada | 0.0 | 0.0 | 0.0 | 0.0 | 0.0 | 0.0 | 0.0 | 0.0 | 0.0 | 0.0 | 0.0 | 0.0 | |
| USA | 0.0 | 0.0 | 0.0 | 0.0 | 0.0 | 0.0 | 0.0 | 0.0 | 0.0 | 0.2 | 0.0 | 0.2 | |
| Nordamerika übrige | 0.0 | 0.0 | 0.0 | 0.0 | 0.0 | 0.0 | 0.0 | 0.0 | 0.0 | 0.0 | 0.0 | 0.0 | |
| Lateinamerika | 0.0 | 0.0 | 0.0 | 0.0 | 0.0 | 0.0 | 0.0 | 0.0 | 0.0 | 2.8 | 0.0 | 2.8 | |
| Afrika | 0.0 | 0.0 | 0.0 | 0.0 | 0.0 | 0.0 | 0.0 | 0.0 | 0.0 | 0.0 | 0.0 | 0.0 | |
| Asien | 0.0 | 0.0 | 0.0 | 0.0 | 0.0 | 0.0 | 0.6 | 0.6 | 0.0 | 0.0 | 0.0 | 0.6 | |
| Australien | 0.0 | 0.0 | 0.0 | 0.0 | 0.0 | 0.0 | 0.0 | 0.0 | 0.0 | 0.0 | 0.0 | 0.0 | |
| TOTAL ANDERE LÄNDER | 0.0 | 0.0 | 0.0 | 0.0 | 0.0 | 0.0 | 0.6 | 0.6 | 0.0 | 2.9 | 0.0 | 3.6 | |
| TOTAL | 559.7 | 1'390.9 | 5'572.2 | 7'522.8 | 96.3 | 868.4 | 4'187.8 | 5'152.5 | 33.8 | 7'464.8 | 1'291.2 | 21'465.2 | |

Quelle: OZD

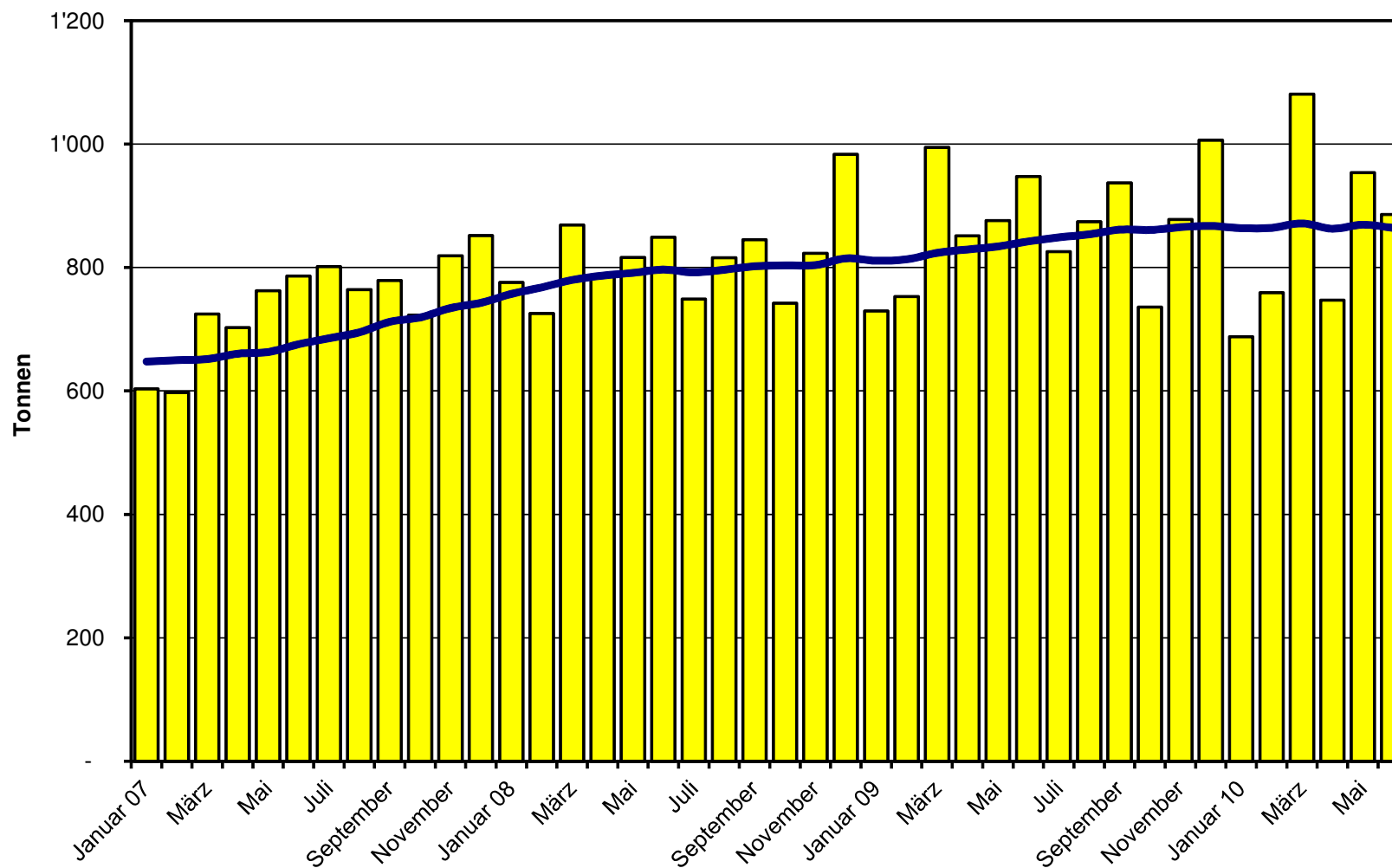
Total Käseimport ab 2007 Mittelwert der letzten 12 Monate



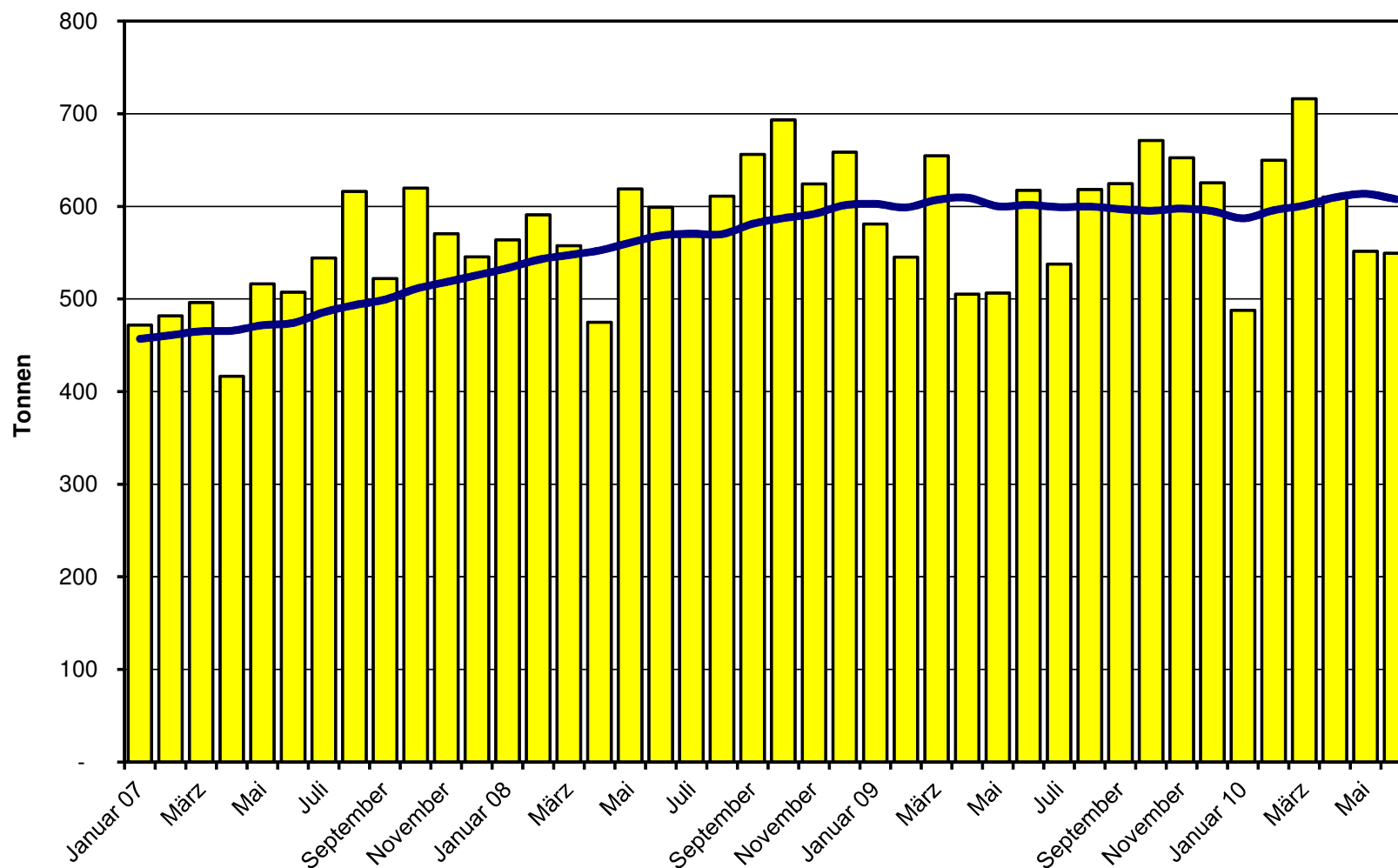
Frischkäse Import ab 2007 Mittelwert der letzten 12 Monate



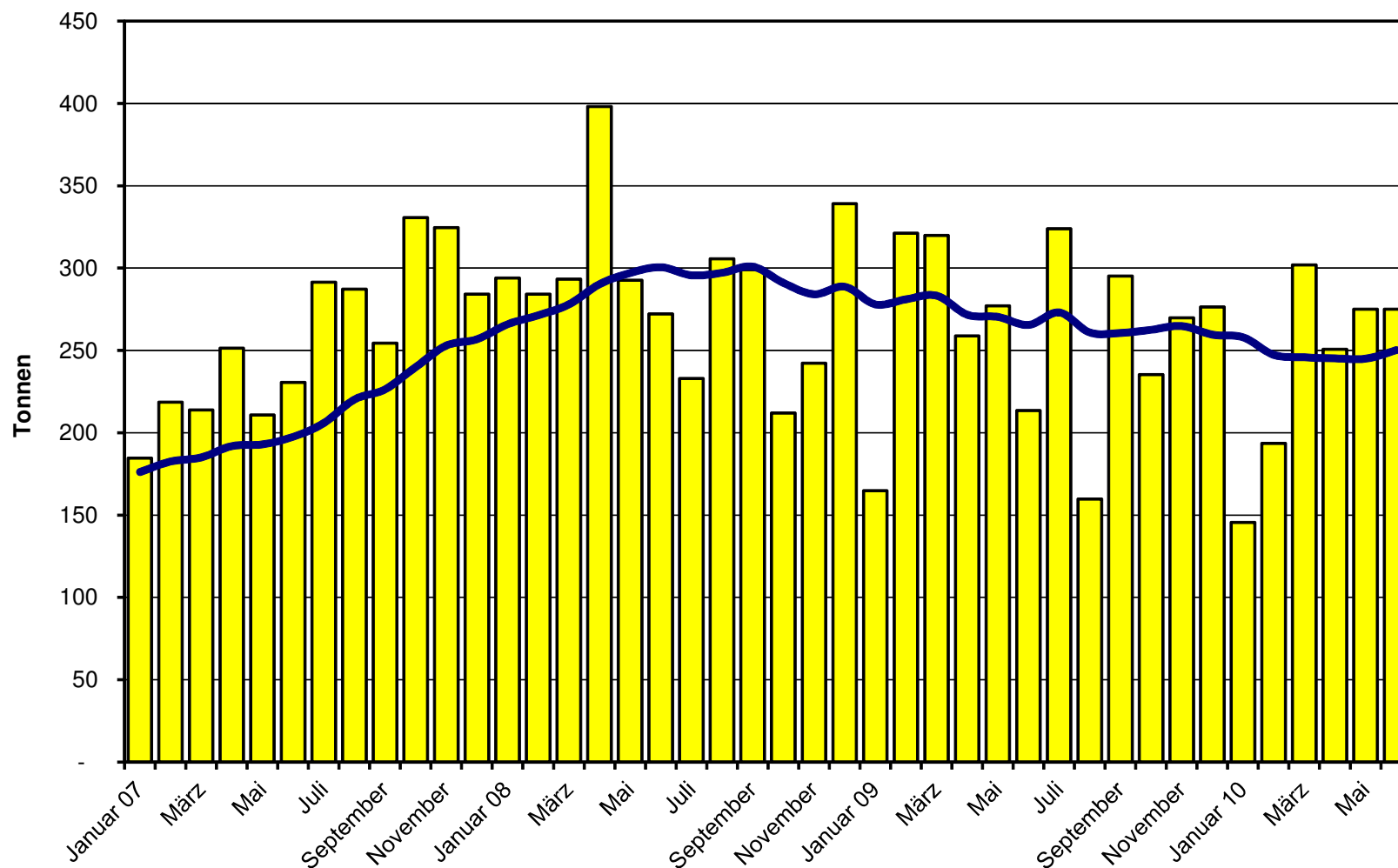
Weichkäse Import ab 2007 Mittelwert der letzten 12 Monate



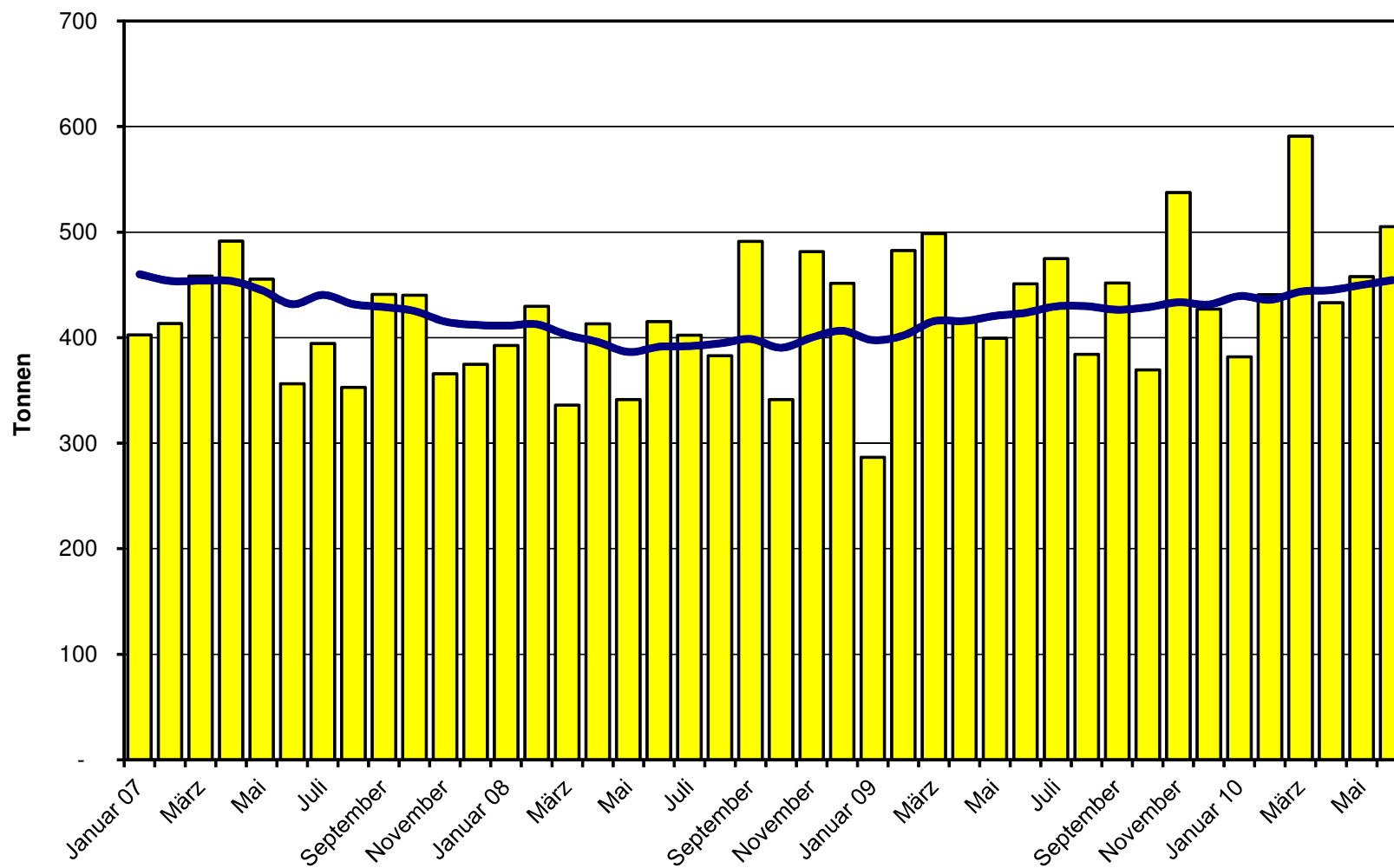
Halbhartkäse Import ab 2007 Mittelwert der letzten 12 Monate



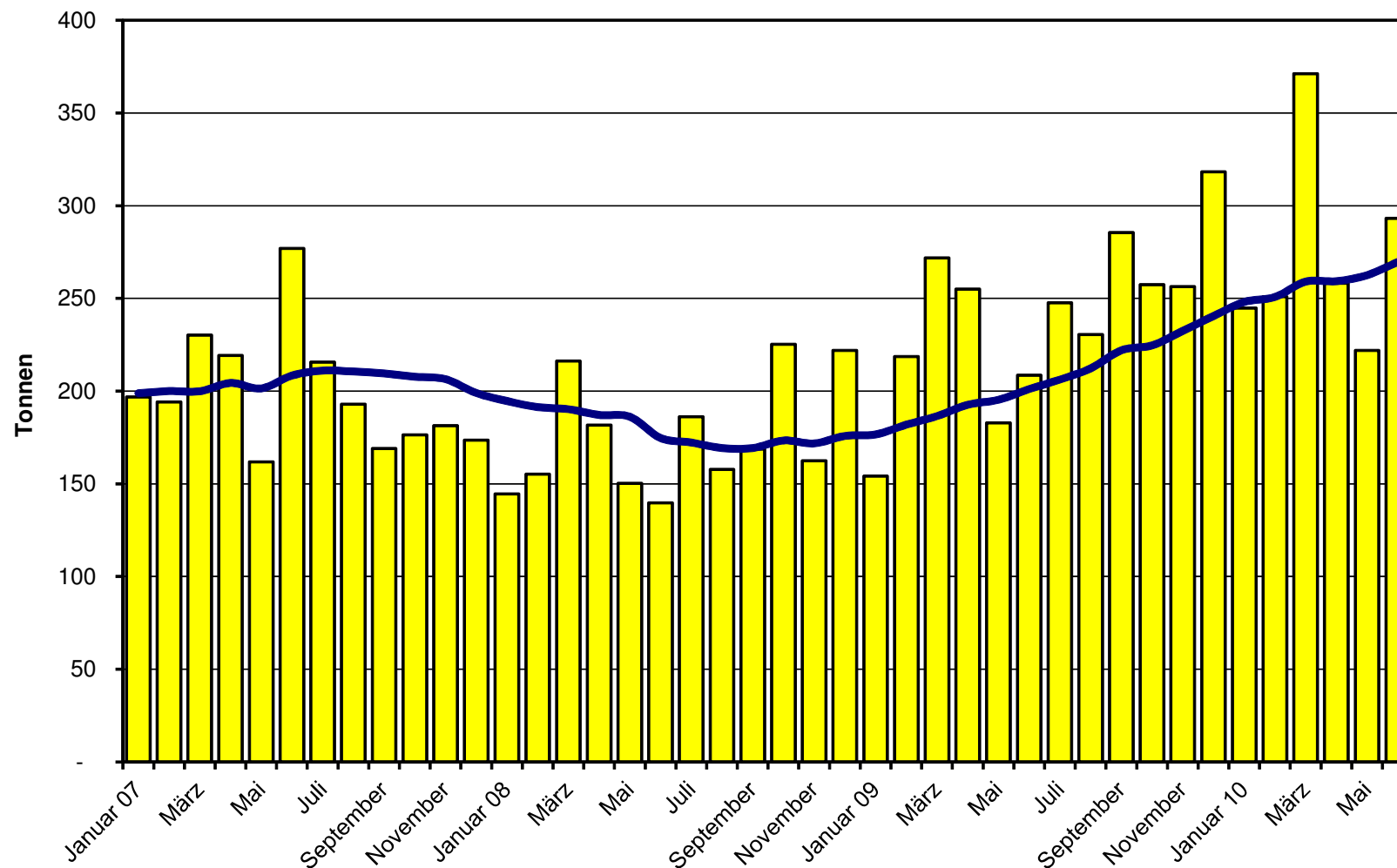
Hartkäse Import ab 2007 Mittelwert der letzten 12 Monate



Extrahartkäse Import ab 2007 Mittelwert der letzten 12 Monate



Schmelzkäse Import ab 2007 Mittelwert der letzten 12 Monate



Käseimporte nach Ländern, Juni 2010 Total 4'410 Tonnen

